

Area
[71395]
 Machine Id
SOURIS
 Component
Diesel Fuel
 Fluid
No.2 DIESEL FUEL (ULTRALOW SULPHUR) (--- GAL)

RECOMMENDATION

Laboratory test indicate that this fuel is suitable for use and meets all test requirements. The fuel change at the time of sampling has been noted. We advise that you filter this fluid before use. We recommend an early resample to monitor this condition.

CORROSION

{not applicable}

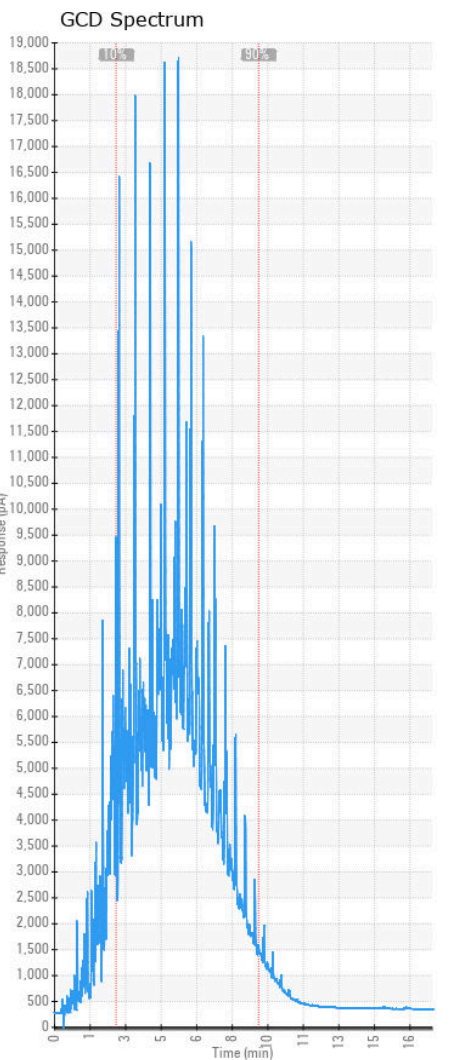
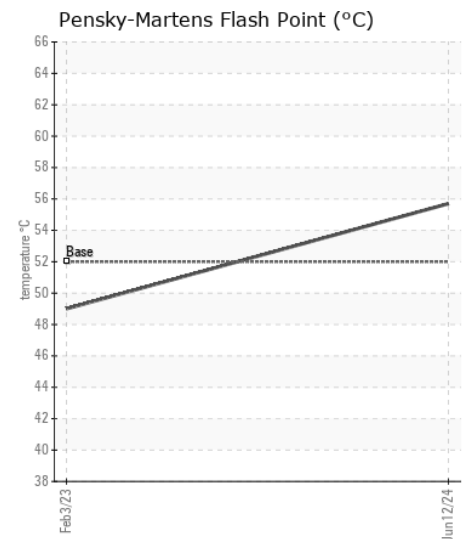
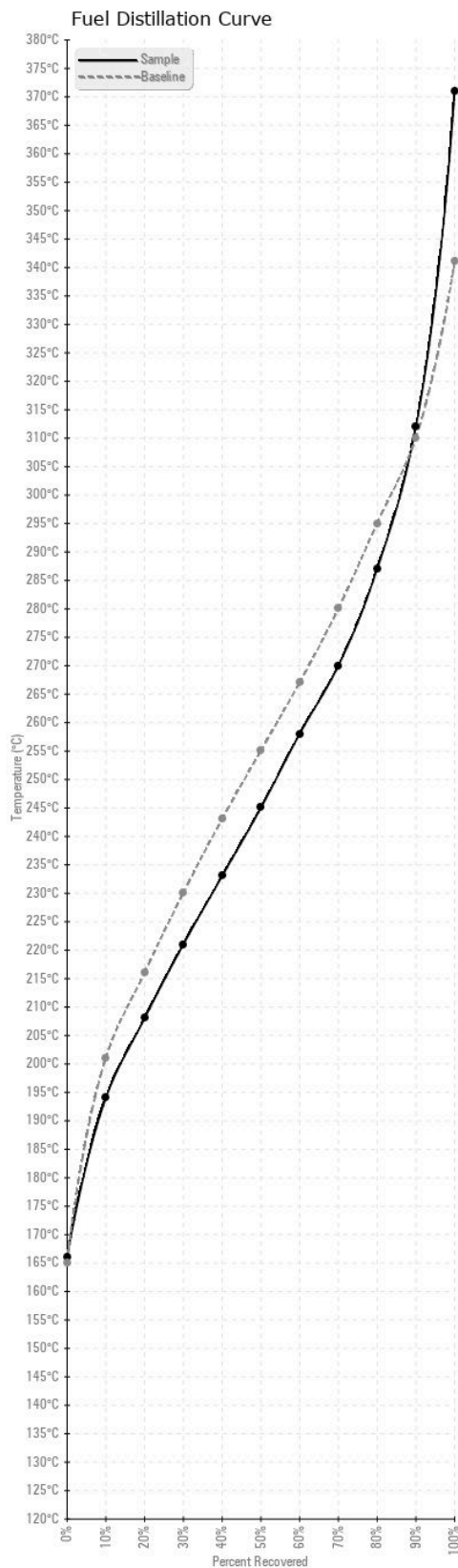
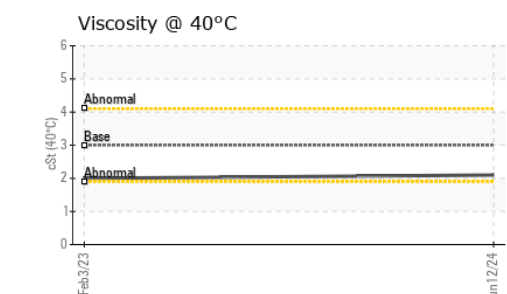
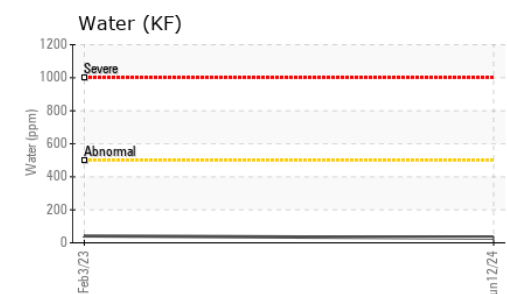
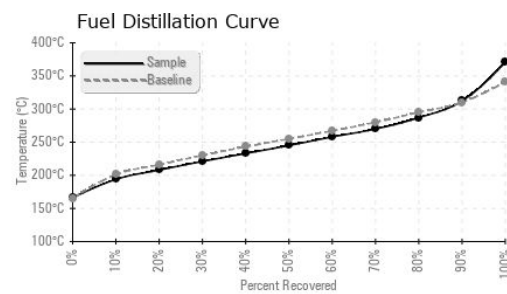
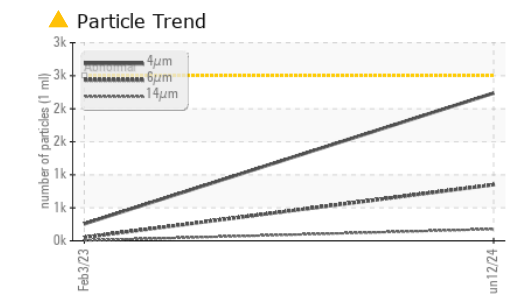
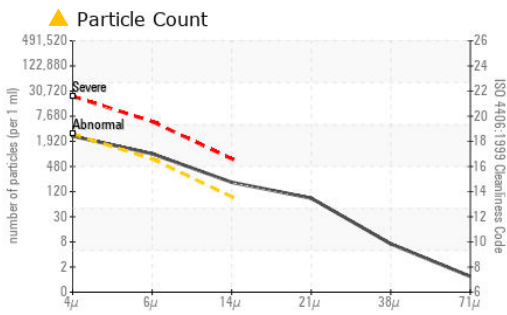
CONTAMINANTS

There is a moderate amount of particulates (2 to 100 microns in size) present in the fuel. The water content is negligible.

FUEL CONDITION

All laboratory tests indicate that this sample meets specifications for No.2 ultra-low-sulfur diesel fuel (US EPA/CGSB-3.517-3 type B). The fuel is still serviceable provided that the contaminant(s) can be reduced to acceptable levels.

| Test | UOM | Method | Limit/Abn | Current | History1 | History2 |
|----------------------------|------|----------------|-----------|--------------------|-------------|----------|
| Sample Number | | Client Info | | CU0021726 | CU0020678 | --- |
| Sample Date | | Client Info | | 12 Jun 2024 | 03 Feb 2023 | --- |
| Machine Age | hrs | Client Info | | 230 | 214 | --- |
| Sample Status | | | | ABNORMAL | SEVERE | --- |
| Aluminum | ppm | ASTM D5185(m) | <0.1 | 0 | 0 | --- |
| Nickel | ppm | ASTM D5185(m) | <0.1 | 0 | 0 | --- |
| Lead | ppm | ASTM D5185(m) | <0.1 | 0 | 0 | --- |
| Vanadium | ppm | ASTM D5185(m) | <0.1 | 0 | 0 | --- |
| Iron | ppm | ASTM D5185(m) | <0.1 | 0 | <1 | --- |
| Silicon | ppm | ASTM D5185(m) | <1.0 | 0 | 0 | --- |
| Sodium | ppm | ASTM D5185(m) | <0.1 | 0 | 0 | --- |
| Potassium | ppm | ASTM D5185(m) | <0.1 | 0 | 0 | --- |
| Water | % | ASTM D6304* | <0.05 | 0.003 | 0.004 | --- |
| ppm Water | ppm | ASTM D6304* | <500 | 29 | 42.1 | --- |
| Particles >4µm | | ASTM D7647 | >2500 | 2237 | 257 | --- |
| Particles >6µm | | ASTM D7647 | >640 | 850 | 52 | --- |
| Particles >14µm | | ASTM D7647 | >80 | 177 | 5 | --- |
| Particles >21µm | | ASTM D7647 | >20 | 74 | 2 | --- |
| Particles >38µm | | ASTM D7647 | >4 | 6 | 0 | --- |
| Particles >71µm | | ASTM D7647 | >3 | 1 | 0 | --- |
| Oil Cleanliness | | ISO 4406 (c) | >18/16/13 | 18/17/15 | 15/13/10 | --- |
| Calcium | ppm | ASTM D5185(m) | <0.1 | 0 | <1 | --- |
| Magnesium | ppm | ASTM D5185(m) | <0.1 | 0 | <1 | --- |
| Phosphorus | ppm | ASTM D5185(m) | <0.1 | <1 | 0 | --- |
| Zinc | ppm | ASTM D5185(m) | <0.1 | 2 | <1 | --- |
| Specific Gravity | | ASTM D1298* | 0.839 | 0.827 | 0.823 | --- |
| Fuel Color | text | Visual Screen* | Yellow | Orang | Yellow | --- |
| Visc @ 40°C | cSt | ASTM D7279(m) | 3.0 | 2.1 | 2 | --- |
| Pensky-Martens Flash Point | °C | ASTM D7215* | 52 | 55.7 | 49 | --- |
| Sulfur | ppm | ASTM D5185(m) | 10 | 15 | 21 | --- |
| Initial Boiling Point | °C | ASTM D2887* | 165 | 166 | 161 | --- |
| 10% Distill Point | °C | ASTM D2887* | 201 | 194 | 191 | --- |
| 20% Distill Point | °C | ASTM D2887* | 216 | 208 | 205 | --- |
| 30% Distill Point | °C | ASTM D2887* | 230 | 221 | 216 | --- |
| 40% Distill Point | °C | ASTM D2887* | 243 | 233 | 227 | --- |
| 50% Distill Point | °C | ASTM D2887* | 255 | 245 | 238 | --- |
| 60% Distill Point | °C | ASTM D2887* | 267 | 258 | 250 | --- |
| 70% Distill Point | °C | ASTM D2887* | 280 | 270 | 261 | --- |
| 80% Distill Point | °C | ASTM D2887* | 295 | 287 | 276 | --- |
| 90% Distill Point | °C | ASTM D2887* | 310 | 312 | 297 | --- |
| Final Boiling Point | °C | ASTM D2887* | 341 | 371 | 334 | --- |
| API Gravity | | ASTM D1298* | 37.7 | --- | 40 | --- |
| Cetane Index | | ASTM D4737* | <40.0 | --- | 49 | --- |



ISO 17025:2017
Accredited
Laboratory

Laboratory : WearCheck - C8-1175 Appleby Line, Burlington, ON L7L 5H9
Sample No. : CU0021726
Lab Number : 02643554
Unique Number : 5801093
Test Package : FUEL (Additional Tests: CC Flash, PrtCount)

Received : 21 Jun 2024
Tested : 25 Jun 2024
Diagnosed : 25 Jun 2024 - Kevin Marson

CUMMINS EASTERN CANADA LP
 321 DOAK ROAD
 FREDERICTON, NB
 CA E3C 2E7
 Contact: Shelley Brawn
 Shelley.Brawn@Cummins.com
 T: (506)451-1929
 F: (506)451-1927

To discuss this sample report, contact Customer Service at 1-800-268-2131.
 Test denoted (*) outside scope of accreditation, (m) method modified, (e) tested at external lab.
 Validity of results and interpretation are based on the sample and information as supplied.