



POWER SYSTEMS
SYSTÈMES DE PUISSANCE

FUEL REPORT

CORROSION	NORMAL
CONTAMINANTS	ATTENTION
FUEL CONDITION	NORMAL

Area

[6100316161]

Machine Id

906991V1453893

Component

Diesel Fuel

Fluid

No.2 DIESEL FUEL (ULTRALOW SULPHUR) (--- GAL)

RECOMMENDATION

Laboratory test indicate that this fuel is suitable for use and meets all test requirements. We advise that you filter this fluid before use. We recommend you service the filters on this component. Resample at the next service interval to monitor.

Test	UOM	Method	Limit/Abn	Current	History1	History2
Sample Number		Client Info		WA0021409	---	---
Sample Date		Client Info		19 Jun 2024	---	---
Machine Age	hrs	Client Info		0	---	---
Sample Status				ATTENTION	---	---

CORROSION

{not applicable}

Aluminum	ppm	ASTM D5185(m)	<0.1	0	---	---
Nickel	ppm	ASTM D5185(m)	<0.1	0	---	---
Lead	ppm	ASTM D5185(m)	<0.1	0	---	---
Vanadium	ppm	ASTM D5185(m)	<0.1	0	---	---
Iron	ppm	ASTM D5185(m)	<0.1	0	---	---

CONTAMINANTS

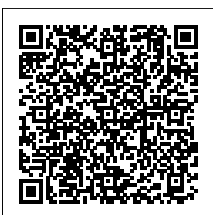
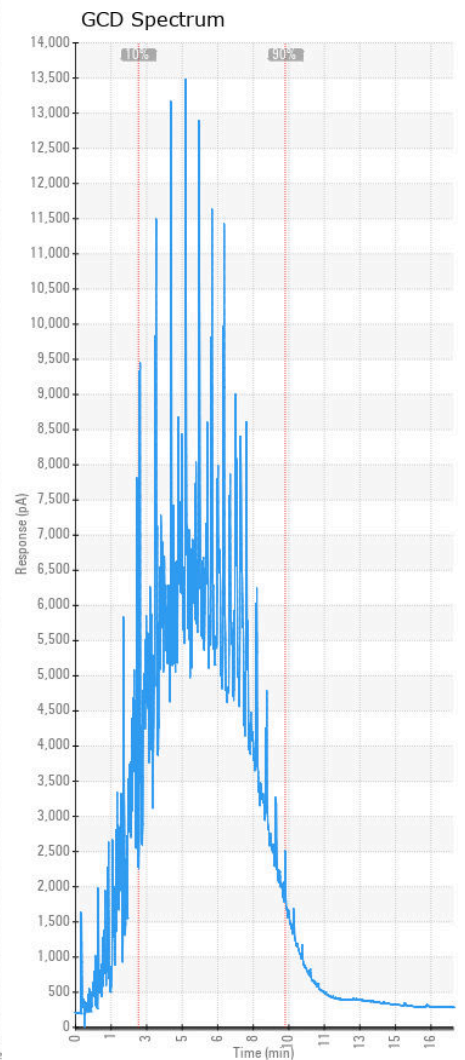
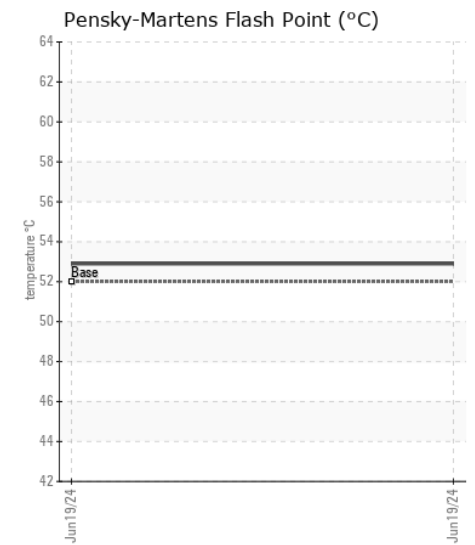
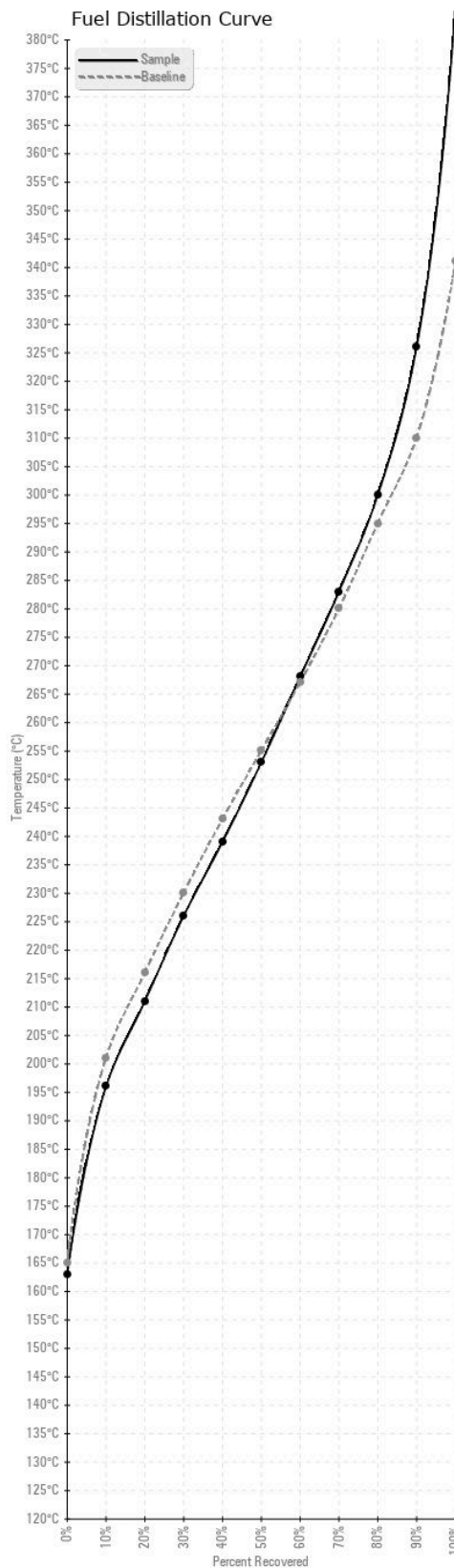
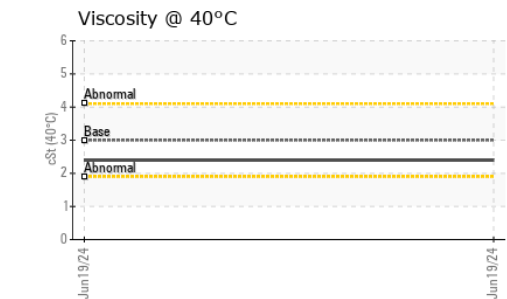
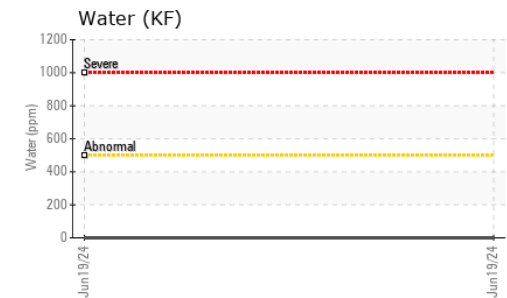
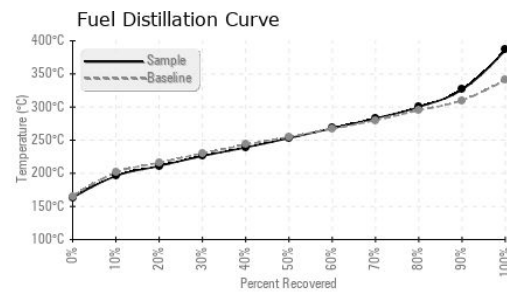
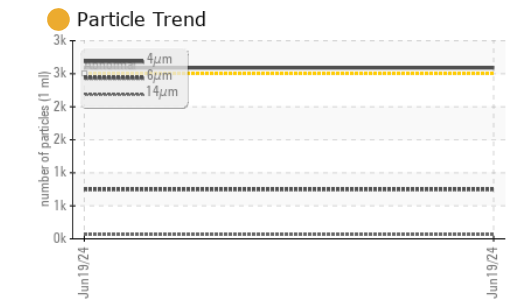
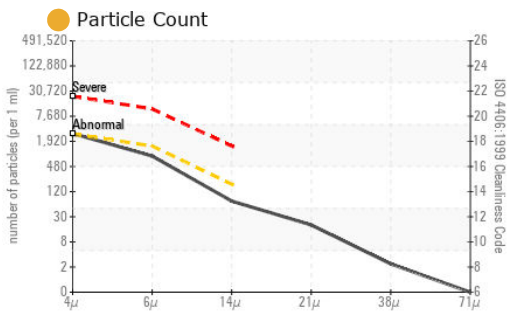
There is a light amount of silt (particulates < 14 microns in size) present in the fuel. The water content is negligible.

Silicon	ppm	ASTM D5185(m)	<1.0	0	---	---
Sodium	ppm	ASTM D5185(m)	<0.1	0	---	---
Potassium	ppm	ASTM D5185(m)	<0.1	0	---	---
Water	%	ASTM D6304*	<0.05	0.00	---	---
ppm Water	ppm	ASTM D6304*	<500	0	---	---
Particles >4µm		ASTM D7647	>2500	2589	---	---
Particles >6µm		ASTM D7647	>1300	749	---	---
Particles >14µm		ASTM D7647	>160	63	---	---
Particles >21µm		ASTM D7647	>40	17	---	---
Particles >38µm		ASTM D7647	>10	2	---	---
Particles >71µm		ASTM D7647	>3	0	---	---
Oil Cleanliness		ISO 4406 (c)	>18/17/14	19/17/13	---	---
Calcium	ppm	ASTM D5185(m)	<0.1	0	---	---
Magnesium	ppm	ASTM D5185(m)	<0.1	0	---	---
Phosphorus	ppm	ASTM D5185(m)	<0.1	<1	---	---
Zinc	ppm	ASTM D5185(m)	<0.1	0	---	---

FUEL CONDITION

All laboratory tests indicate that this sample meets specifications for No.2 ultra-low-sulfur diesel fuel (US EPA/CGSB-3.517-3 type B).

Specific Gravity		ASTM D1298*	0.839	0.834	---	---
Fuel Color	text	Visual Screen*	Yellow	Yellow	---	---
Visc @ 40°C	cSt	ASTM D7279(m)	3.0	2.4	---	---
Pensky-Martens Flash Point	°C	ASTM D7215*	52	52.9	---	---
Sulfur	ppm	ASTM D5185(m)	10	7	---	---
Initial Boiling Point	°C	ASTM D2887*	165	163	---	---
10% Distill Point	°C	ASTM D2887*	201	196	---	---
20% Distill Point	°C	ASTM D2887*	216	211	---	---
30% Distill Point	°C	ASTM D2887*	230	226	---	---
40% Distill Point	°C	ASTM D2887*	243	239	---	---
50% Distill Point	°C	ASTM D2887*	255	253	---	---
60% Distill Point	°C	ASTM D2887*	267	268	---	---
70% Distill Point	°C	ASTM D2887*	280	283	---	---
80% Distill Point	°C	ASTM D2887*	295	300	---	---
90% Distill Point	°C	ASTM D2887*	310	326	---	---
Final Boiling Point	°C	ASTM D2887*	341	386	---	---
API Gravity		ASTM D1298*	37.7	38	---	---
Cetane Index		ASTM D4737*	<40.0	49	---	---



Laboratory : WearCheck - C8-1175 Appleby Line, Burlington, ON L7L 5H9
Sample No. : WA0021409
Lab Number : 02643557
Unique Number : 5801096
Test Package : FUEL (Additional Tests: CC Flash, PrtCount)

Received : 21 Jun 2024
Tested : 25 Jun 2024
Diagnosed : 25 Jun 2024 - Kevin Marson

CUMMINS EASTERN CANADA LP
 321 DOAK ROAD
 FREDERICTON, NB
 CA E3C 2E7
 Contact: Shelley Brawn
 Shelley.Brawn@Cummins.com
 T: (506)451-1929
 F: (506)451-1927

To discuss this sample report, contact Customer Service at 1-800-268-2131.
 Test denoted (*) outside scope of accreditation, (m) method modified, (e) tested at external lab.
 Validity of results and interpretation are based on the sample and information as supplied.