



FUEL REPORT

WEAR	NORMAL
CONTAMINATION	NORMAL
FLUID CONDITION	NORMAL

Area

(N/A)

Machine Id

[N/A] REFUELLER 04-563 FILTER

Component

Jet Fuel

Fluid

JET FUEL Type A (--- GAL)

RECOMMENDATION

Laboratory test indicate that this fuel is suitable for use and meets all test requirements. Resample at the next service interval to monitor.

WEAR

{not applicable}

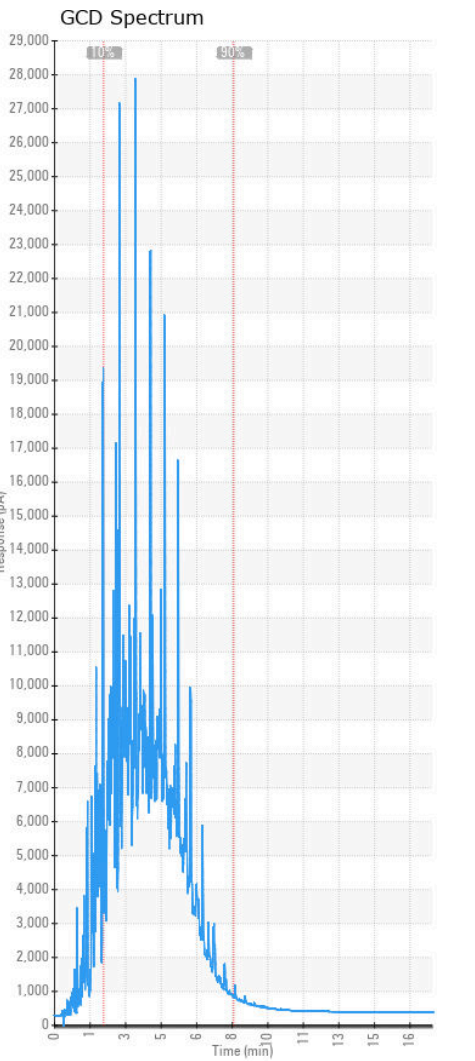
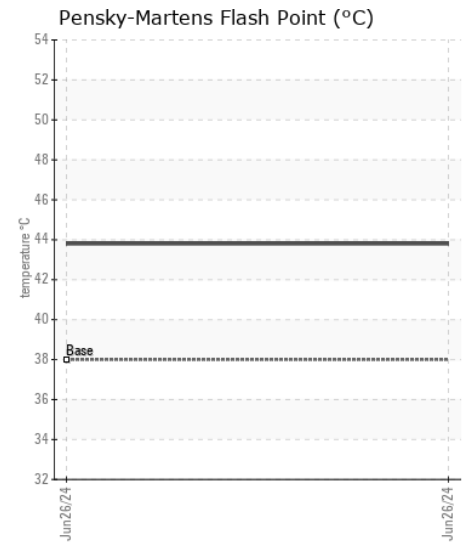
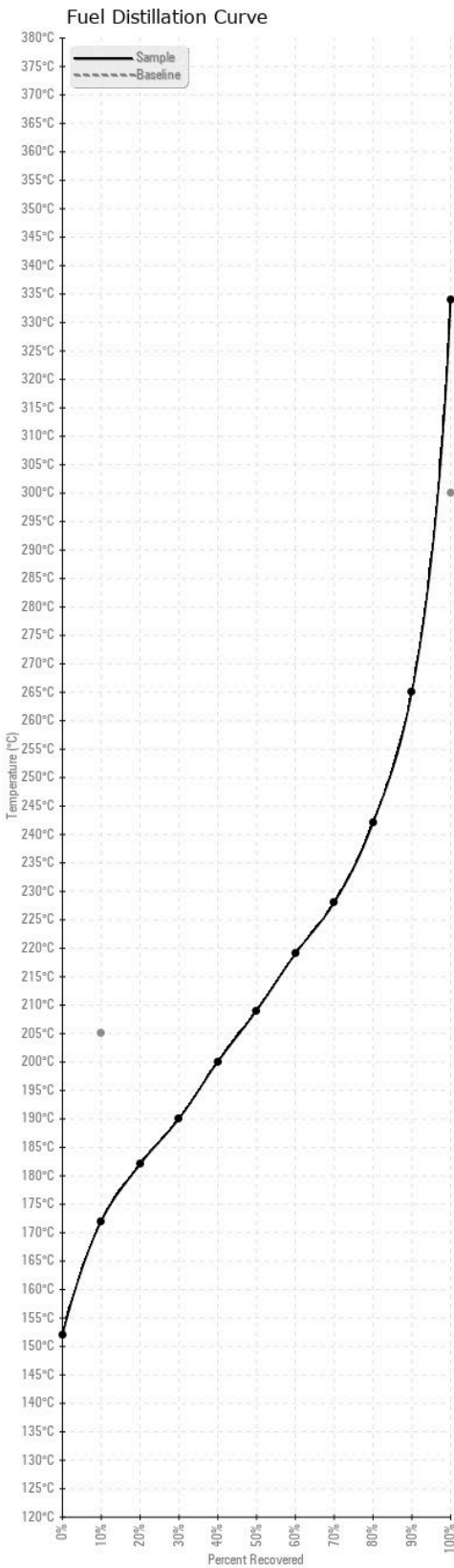
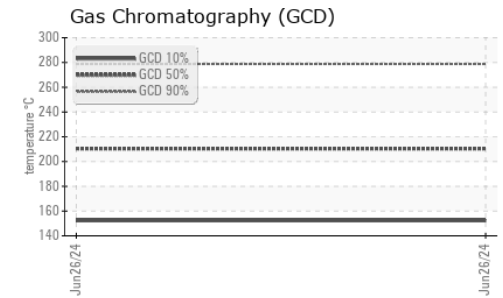
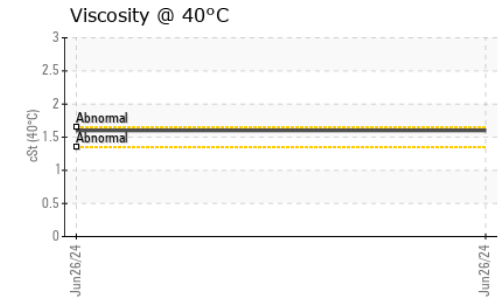
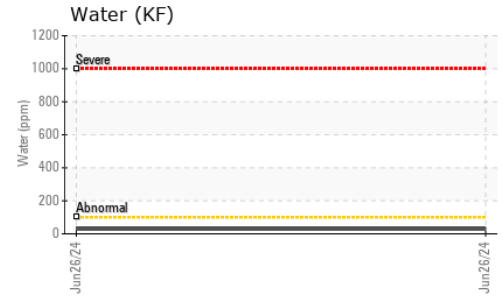
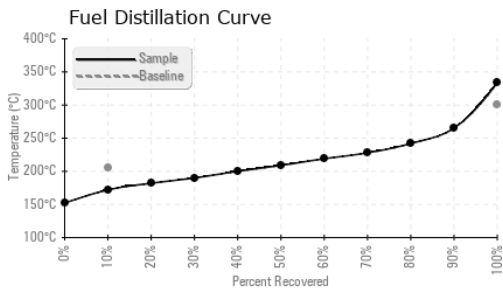
CONTAMINATION

The water content is negligible. The fuel phase was tested for microbes, as there was no separate water phase present in the sample. The MicrobMonitor2 test kit was used to test for microbiological contamination in the sample. There is no indication of any contamination in the jet fuel.

FLUID CONDITION

All laboratory tests indicate that this sample appears to be Jet Fuel Type A.

Test	UOM	Method	Limit/Abn	Current	History1	History2
Sample Number		Client Info		WC0653017	---	---
Sample Date		Client Info		26 Jun 2024	---	---
Machine Age	hrs	Client Info		0	---	---
Oil Age	hrs	Client Info		0	---	---
Filter Age	hrs	Client Info		0	---	---
Oil Changed		Client Info		N/A	---	---
Filter Changed		Client Info		N/A	---	---
Sample Status				NORMAL	---	---
Aluminum	ppm	ASTM D5185(m)	<0.1	0	---	---
Nickel	ppm	ASTM D5185(m)	<0.1	0	---	---
Lead	ppm	ASTM D5185(m)	<0.1	0	---	---
Vanadium	ppm	ASTM D5185(m)	<0.1	0	---	---
Iron	ppm	ASTM D5185(m)	<0.1	0	---	---
Silicon	ppm	ASTM D5185(m)	<1.0	0	---	---
Sodium	ppm	ASTM D5185(m)	<0.1	0	---	---
Potassium	ppm	ASTM D5185(m)	<0.1	0	---	---
Water	%	ASTM D6304*	<0.05	0.003	---	---
ppm Water	ppm	ASTM D6304*	<500	29	---	---
Microbes	CFU/L	ASTM D6469*	>=4000	0	---	---
Calcium	ppm	ASTM D5185(m)	<0.1	0	---	---
Magnesium	ppm	ASTM D5185(m)	<0.1	0	---	---
Phosphorus	ppm	ASTM D5185(m)	<0.1	0	---	---
Zinc	ppm	ASTM D5185(m)	<0.1	0	---	---
Specific Gravity		ASTM D1298*		0.806	---	---
Fuel Color	text	Visual Screen*		Yellow	---	---
Visc @ 40°C	cSt	ASTM D7279(m)	<8.0	1.6	---	---
Pensky-Martens Flash Point	°C	ASTM D7215*	38	43.8	---	---
Pour Point	°C	ASTM D97*	-45	-60	---	---
Sulfur	ppm	ASTM D5185(m)	<3000	397	---	---
Initial Boiling Point	°C	ASTM D2887*		152	---	---
10% Distill Point	°C	ASTM D2887*	205	172	---	---
20% Distill Point	°C	ASTM D2887*		182	---	---
30% Distill Point	°C	ASTM D2887*		190	---	---
40% Distill Point	°C	ASTM D2887*		200	---	---
50% Distill Point	°C	ASTM D2887*		209	---	---
60% Distill Point	°C	ASTM D2887*		219	---	---
70% Distill Point	°C	ASTM D2887*		228	---	---
80% Distill Point	°C	ASTM D2887*		242	---	---
90% Distill Point	°C	ASTM D2887*		265	---	---
Final Boiling Point	°C	ASTM D2887*	300	334	---	---
API Gravity		ASTM D1298*	44	44	---	---
Cetane Index		ASTM D4737*	<40.0	48	---	---



ISO 17025:2017
Accredited
Laboratory

Laboratory : WearCheck - C8-1175 Appleby Line, Burlington, ON L7L 5H9
Sample No. : WC0653017
Lab Number : 02644441
Unique Number : 5801980
Test Package : FUEL (Additional Tests: CC Flash)

Received : 27 Jun 2024
Tested : 03 Jul 2024
Diagnosed : 03 Jul 2024 - Kevin Marson

PORTER AIRLINES INC
 BILLY BISHOP TORONTO CITY AIRPORT, HANGAR 5
 TORONTO, ON
 CA M5V 1A1
 Contact: Jason Thibault
 jason.thibault@flyporter.com
 T: (647)454-7933
 F: (416)203-9198

To discuss this sample report, contact Customer Service at 1-800-268-2131.
 Test denoted (*) outside scope of accreditation, (m) method modified, (e) tested at external lab.
 Validity of results and interpretation are based on the sample and information as supplied.