



# FILTER DEBRIS ANALYSIS

WEAR PARTICLES  
CONTAMINANTS

SEVERE

NORMAL

## Machine Id GENERATOR FILTER #3

Component

Filter

Fluid

{not provided} (--- GAL)

### RECOMMENDATION

We recommend that you drain the filter from the component if this has not already been done. We recommend an early resample to monitor this condition. Diagnostician's Note: This filter contained some very large and chunky wear particles that indicate excessive 2-body abrasive wear. Several particles are welded steel and brass. Appears that this is a new generator breaking in, but the wear is excessive even for break-in condition.

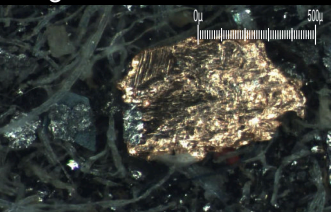
### WEAR PARTICLES

Wear particle analysis indicates that the ferrous sliding and nonferrous sliding particles are severe. Bearing wear is indicated. The filter contained no appreciable wear particles. All filter wear levels are normal.

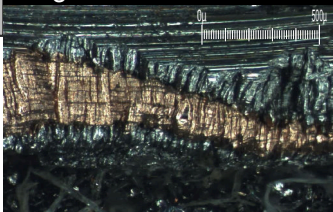
Magn: 10x Illum: RW



Magn: 60x Illum: RW

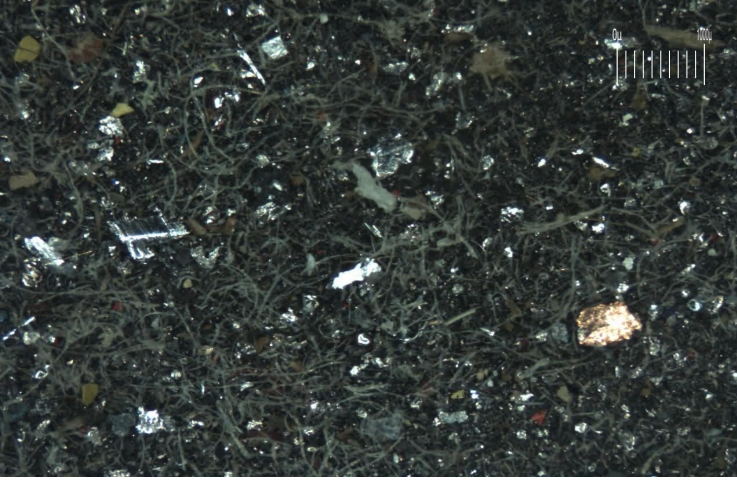


Magn: 60x Illum: RW

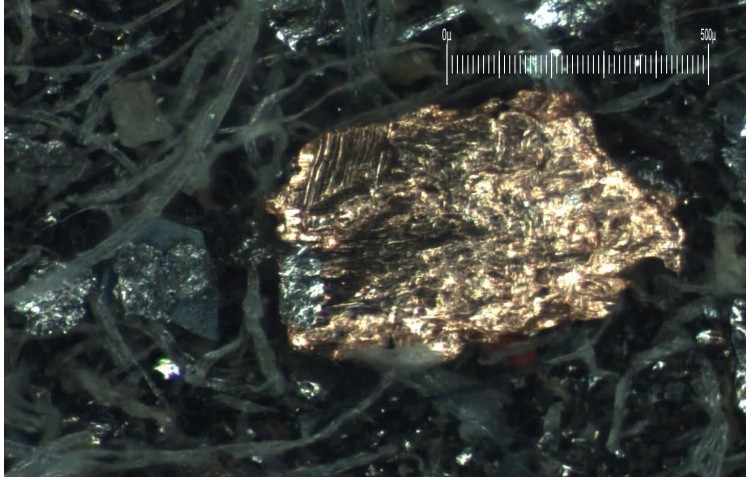


Test	UOM	Method	Limit/Abn	Current	History1	History2
Sample Number		Client Info		PP	---	---
Sample Date		Client Info		24 Jun 2024	---	---
Machine Age	hrs	Client Info		18	---	---
Oil Age	hrs	Client Info		18	---	---
Filter Age	hrs	Client Info		18	---	---
Oil Changed		Client Info		Not Changd	---	---
Filter Changed		Client Info		Not Changd	---	---
Sample Status				SEVERE	---	---
Ferrous Rubbing	Scale 0-10	ASTM D7684*		3		
Ferrous Sliding	Scale 0-10	ASTM D7684*		3		
Ferrous Cutting	Scale 0-10	ASTM D7684*				
Ferrous Rolling	Scale 0-10	ASTM D7684*				
Ferrous Break-in	Scale 0-10	ASTM D7684*				
Ferrous Spheres	Scale 0-10	ASTM D7684*				
Ferrous Black Oxides	Scale 0-10	ASTM D7684*				
Ferrous Red Oxides	Scale 0-10	ASTM D7684*				
Ferrous Corrosive	Scale 0-10	ASTM D7684*				
Ferrous Other	Scale 0-10	ASTM D7684*				
Nonferrous Rubbing	Scale 0-10	ASTM D7684*		3		
Nonferrous Sliding	Scale 0-10	ASTM D7684*		3		
Nonferrous Cutting	Scale 0-10	ASTM D7684*				
Nonferrous Rolling	Scale 0-10	ASTM D7684*				
Nonferrous Other	Scale 0-10	ASTM D7684*				
Sand/Dirt	Scale 0-10	ASTM D7684*		2		
Fibres	Scale 0-10	ASTM D7684*		2		
Spheres	Scale 0-10	ASTM D7684*				
Other	Scale 0-10	ASTM D7684*				
Patch Weight	mg	ASTM D7684*		46	---	---

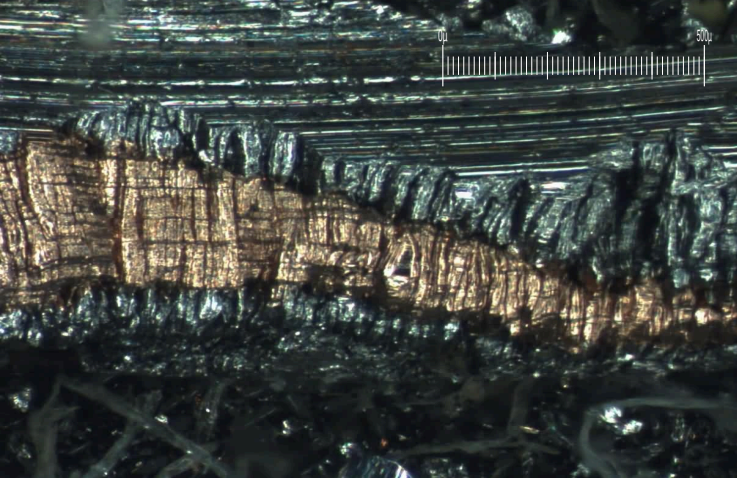
Magn: 10x Illum: RW



Magn: 60x Illum: RW



Magn: 60x Illum: RW



Laboratory : WearCheck - C8-1175 Appleby Line, Burlington, ON L7L 5H9  
Sample No. : PP  
Lab Number : 02645362  
Unique Number : 5802901  
Test Package : FLTRO

FORENSIC SCIENCE INTERNATIONAL GROUP  
17 RYAN CRESCENT  
MARKHAM, ON  
CA L6C 1A9  
Contact: Helmut Brosz  
hbrosz@forensicsig.org  
T: (905)472-6660  
F: (905)472-6665

To discuss this sample report, contact Customer Service at 1-800-268-2131.  
Test denoted (\*) outside scope of accreditation, (m) method modified, (e) tested at external lab.  
Validity of results and interpretation are based on the sample and information as supplied.

*This page left intentionally blank*