



# COOLANT REPORT

CORROSION

**SEVERE**

CONTAMINANTS

**NORMAL**

COOLANT CONDITION

**NORMAL**

Area

**DAKOTA RANGE III [200006928]**

Machine Id

**20WEA87757 - D-03-V**

Component

**Coolant**

Fluid

**ISENTHAL VARIDOS 45 (--- LTR)**

## RECOMMENDATION

We recommend drain/flush system, and refill with 50/50 antifreeze water mixture.

Test	UOM	Method	Limit/Abn	Current	History1	History2
Sample Number		Client Info		<b>NX05852696</b>	---	---
Sample Date		Client Info		<b>25 Apr 2023</b>	---	---
Machine Age	hrs	Client Info		<b>14064</b>	---	---
Oil Age	hrs	Client Info		<b>14064</b>	---	---
Oil Changed		Client Info		<b>N/A</b>	---	---
Sample Status				<b>SEVERE</b>	---	---

## CORROSION

The iron level is severe. The aluminum level is severe.

Iron	ppm	ASTM D6130	>15	<b>116</b>	---	---
Aluminum	ppm	ASTM D6130	>10	<b>61</b>	---	---
Copper	ppm	ASTM D6130	>10	<b>2</b>	---	---
Lead	ppm	ASTM D6130	>10	<b>2</b>	---	---
Tin	ppm	ASTM D6130	>10	<b>2</b>	---	---
Zinc	ppm	ASTM D6130	>10	<b>33</b>	---	---

## CONTAMINANTS

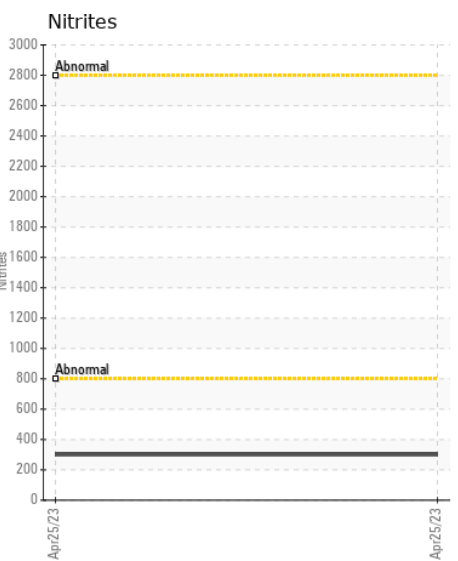
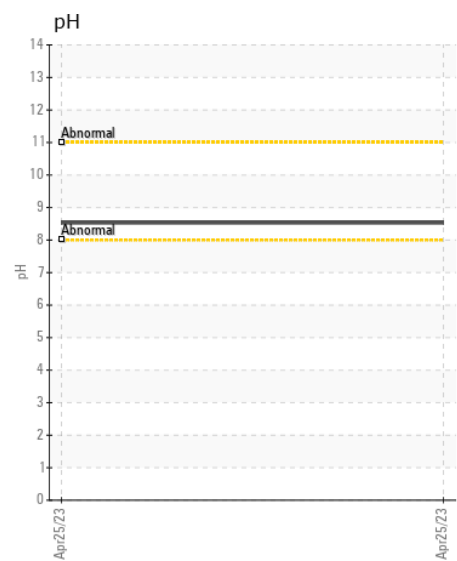
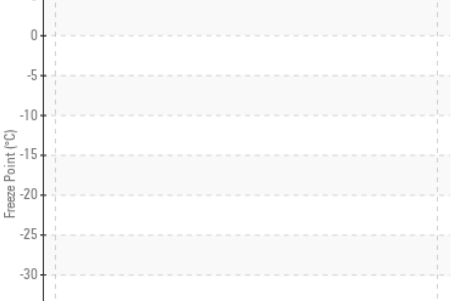
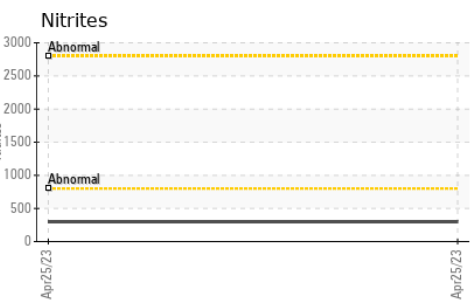
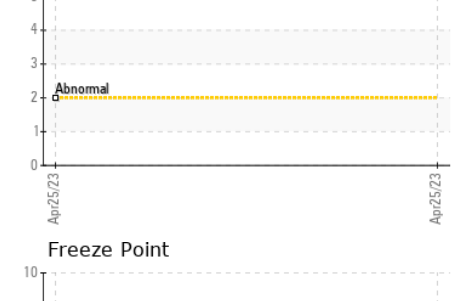
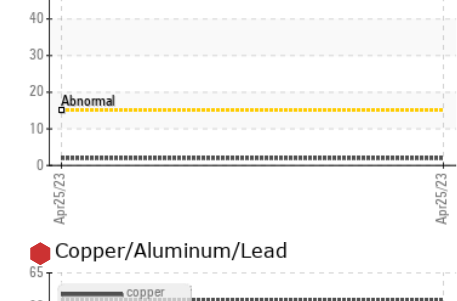
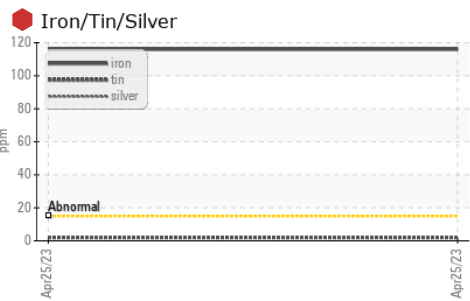
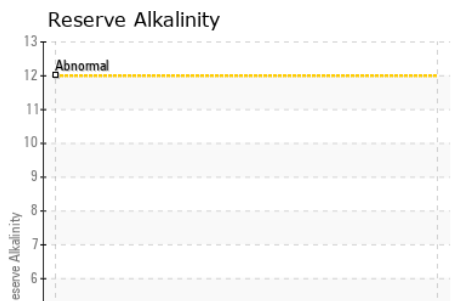
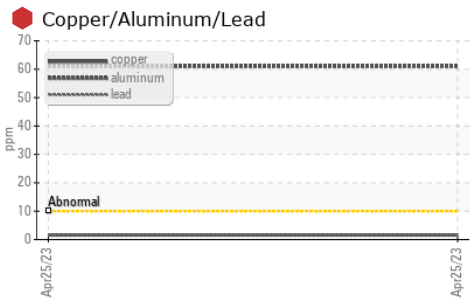
There is no indication of any contamination in the coolant.

Calcium	ppm	ASTM D6130		<b>2</b>	---	---
Chlorine	ppm	ASTM D6130		<b>81</b>	---	---
Magnesium	ppm	ASTM D6130		<b>3</b>	---	---
Total Dissolved Solids				<b>150.0</b>	---	---
Coolant Appearance		*Visual	Clear	<b>normal</b>	---	---

## COOLANT CONDITION

Glycol and nitrite levels are acceptable. The pH level of this fluid is within the acceptable limits.

Specific Gravity		*ASTM D1298		<b>1.068</b>	---	---
pH	Scale 0-14	ASTM D1287	8.5	<b>8.53</b>	---	---
Nitrites	ppm	AP-053:2009	260	<b>300</b>	---	---
Reserve Alkalinity	Scale 0-20	*ASTM D1121		<b>---</b>	---	---
Percentage Glycol	%	ASTM D3321	45	<b>50.7</b>	---	---
Freezing Point	°F	ASTM D3321	-24	<b>-35</b>	---	---
Carboxylate				<b>n/a</b>	---	---
Silicon	ppm	ASTM D6130	25	<b>28</b>	---	---
Phosphorus	ppm	ASTM D6130	140	<b>175</b>	---	---
Boron	ppm	ASTM D6130	0	<b>21</b>	---	---
Molybdenum	ppm	ASTM D6130	1075	<b>1138</b>	---	---
Sodium	ppm	ASTM D6130	1075	<b>1019</b>	---	---
Potassium	ppm	ASTM D6130	5	<b>1902</b>	---	---
Coolant Color		*Visual	DkYlw	<b>Yllow</b>	---	---



**Laboratory** : WearCheck USA - 501 Madison Ave., Cary, NC 27513  
**Sample No.** : NX05852696 **Received** : 19 May 2023  
**Lab Number** : 05852696 **Tested** : 26 May 2023  
**Unique Number** : 10482051 **Diagnosed** : 04 Jun 2023 - Doug Bogart  
**Test Package** : COOL- ( Additional Tests: COOL, ICP )

**NORDEX USA - Chicago**  
 300 SOUTH WACKER DRIVE, SUITE 1500  
 CHICAGO, IL  
 US 60606  
 Contact: DEVIN LINEHAN  
 DLinehan@nordex-online.com  
 T: (312)386-4124  
 F: (312)386-7102

Certificate L2367  
 To discuss this sample report, contact Customer Service at 1-800-237-1369.  
 \* - Denotes test methods that are outside of the ISO 17025 scope of accreditation.  
 Statements of conformity to specifications are based on the simple acceptance decision rule (JCGM 106:2012)