



WEAR	NORMAL
CONTAMINATION	ABNORMAL
FLUID CONDITION	NORMAL

Area
FLEET
Machine Id
VOLVO VNL740 Sleeper 2227104
Component
Main Diesel Engine
Fluid
PETRO CANADA 10W30 (36 QTS)

RECOMMENDATION

Oil and filter change at the time of sampling has been noted. No corrective action is recommended at this time. Resample at the next service interval to monitor.

Test	UOM	Method	Limit/Abn	Current	History1	History2
Sample Number		Client Info		PCA0112285	---	---
Sample Date		Client Info		19 Dec 2023	---	---
Machine Age	mls	Client Info		19541	---	---
Oil Age	mls	Client Info		19541	---	---
Filter Age	mls	Client Info		19541	---	---
Oil Changed		Client Info		Changed	---	---
Filter Changed		Client Info		Changed	---	---
Sample Status				ABNORMAL	---	---

WEAR

Metal levels are typical for a new component breaking in.

Iron	ppm	ASTM D5185m	>100	28	---	---
Chromium	ppm	ASTM D5185m	>20	<1	---	---
Nickel	ppm	ASTM D5185m	>2	2	---	---
Titanium	ppm	ASTM D5185m		<1	---	---
Silver	ppm	ASTM D5185m	>2	17	---	---
Aluminum	ppm	ASTM D5185m	>25	28	---	---
Lead	ppm	ASTM D5185m	>40	<1	---	---
Copper	ppm	ASTM D5185m	>330	118	---	---
Tin	ppm	ASTM D5185m	>15	4	---	---
Vanadium	ppm	ASTM D5185m		<1	---	---
White Metal	scalar	*Visual	NONE	NONE	---	---
Yellow Metal	scalar	*Visual	NONE	NONE	---	---

CONTAMINATION

Elemental level of silicon (Si) above normal indicating ingress of seal material. Elevated aluminum (Al) and/or lead (Pb) and potassium (K) levels in your metals analysis are likely a result of solder flux release into the lubricant and is common on new equipment/components.

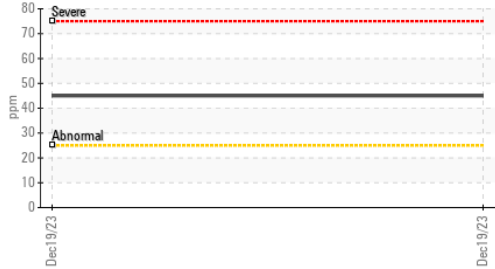
Silicon	ppm	ASTM D5185m	>25	▲ 45	---	---
Potassium	ppm	ASTM D5185m	>20	74	---	---
Fuel		WC Method	>6.0	<1.0	---	---
Water		WC Method	>0.2	NEG	---	---
Glycol		WC Method		NEG	---	---
Soot %	%	*ASTM D7844	>3	0.1	---	---
Nitration	Abs/cm	*ASTM D7624	>20	9.3	---	---
Sulfation	Abs/.1mm	*ASTM D7415	>30	23.7	---	---
Silt	scalar	*Visual	NONE	NONE	---	---
Debris	scalar	*Visual	NONE	NONE	---	---
Sand/Dirt	scalar	*Visual	NONE	NONE	---	---
Appearance	scalar	*Visual	NORML	NORML	---	---
Odor	scalar	*Visual	NORML	NORML	---	---
Emulsified Water	scalar	*Visual	>0.2	NEG	---	---

FLUID CONDITION

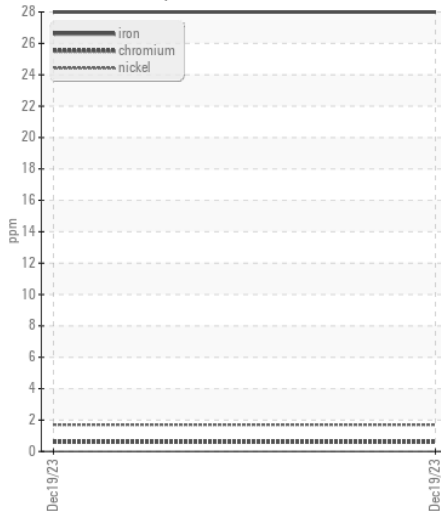
The BN result indicates that there is suitable alkalinity remaining in the oil. The condition of the oil is suitable for further service.

Sodium	ppm	ASTM D5185m		1	---	---
Boron	ppm	ASTM D5185m		187	---	---
Barium	ppm	ASTM D5185m		0	---	---
Molybdenum	ppm	ASTM D5185m		107	---	---
Manganese	ppm	ASTM D5185m		4	---	---
Magnesium	ppm	ASTM D5185m		690	---	---
Calcium	ppm	ASTM D5185m		1375	---	---
Phosphorus	ppm	ASTM D5185m		711	---	---
Zinc	ppm	ASTM D5185m		873	---	---
Sulfur	ppm	ASTM D5185m		2337	---	---
Oxidation	Abs/.1mm	*ASTM D7414	>25	21.5	---	---
Base Number (BN)	mg KOH/g	ASTM D2896		7.7	---	---
Visc @ 100°C	cSt	ASTM D445		9.5	---	---

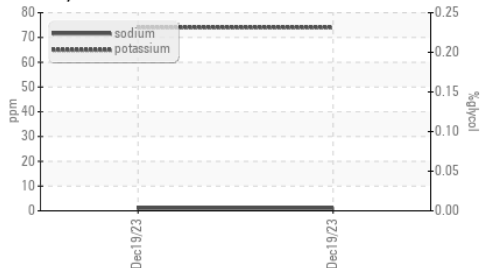
▲ Silicon (ppm)



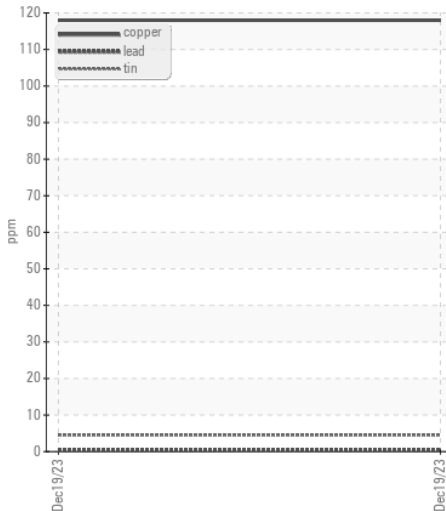
Ferrous Alloys



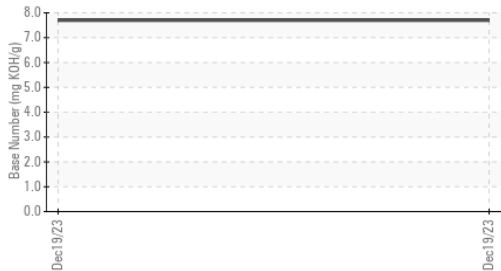
Glycol Contamination



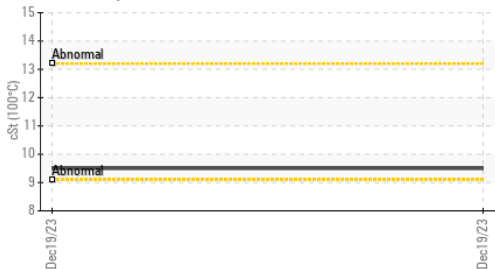
Non-ferrous Metals



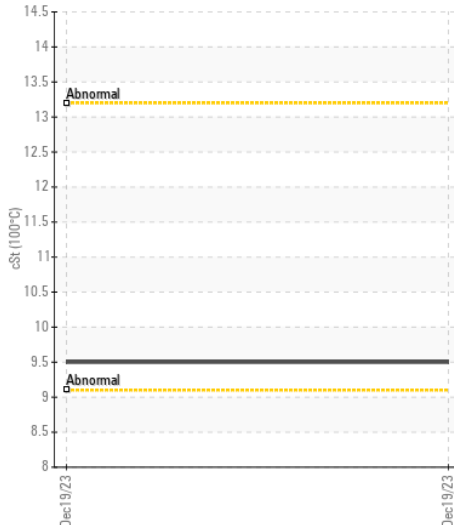
Base Number



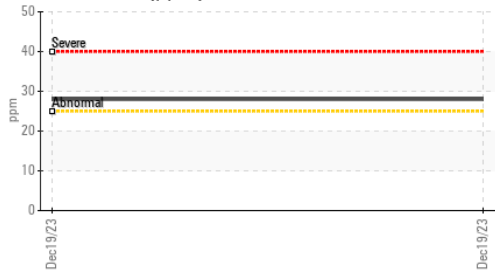
Viscosity @ 100°C



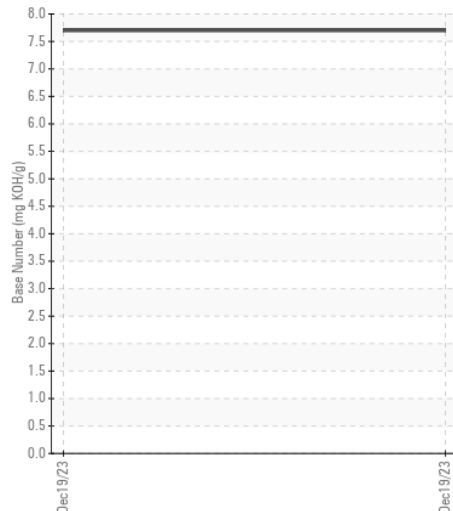
Viscosity @ 100°C



Aluminum (ppm)



Base Number



Certificate L2367

Laboratory : WearCheck USA - 501 Madison Ave., Cary, NC 27513
 Sample No. : PCA0112285 Recieved : 11 Jan 2024
 Lab Number : 06057862 Diagnosed : 12 Jan 2024
 Unique Number : 10829244 Diagnostician : Don Baldrige
 Test Package : FLEET

PERDUE FARMS - DILLON
 2047 HWY 9 WEST
 DILLON, SC
 US 29536
 Contact: KEVIN HOOKS
 kevin.hooks@perdue.com
 T: (843)841-8069
 F: (843)841-8070

To discuss this sample report, contact Customer Service at 1-800-237-1369.

* - Denotes test methods that are outside of the ISO 17025 scope of accreditation.

Statements of conformity to specifications are based on the simple acceptance decision rule (JCGM 106:2012)