



OIL ANALYSIS REPORT

WEAR	NORMAL
CONTAMINATION	SEVERE
FLUID CONDITION	ABNORMAL

Area
{UNASSIGNED}
Machine Id
PETERBILT Coca Cola
Component
Diesel Exhaust Fluid (DEF)
Fluid
{not provided} (--- GAL)

RECOMMENDATION

We advise that you check for the source of fuel entry. Fluid does not meet ISO 22241-2 requirements. Contact supplier. Recommend drain diesel exhaust fluid (def) if not already done and flush before refilling with diesel exhaust fluid (def). (Customer Sample Comment: Believe that diesel fuel was added to def tank)

WEAR

Test	UOM	Method	Limit/Abn	Current	History1	History2
Sample Number		Client Info		NL0001942	---	---
Sample Date		Client Info		07 Feb 2024	---	---
Machine Age	hrs	Client Info		28063	---	---
Oil Age	hrs	Client Info		28063	---	---
Filter Age	hrs	Client Info		0	---	---
Oil Changed		Client Info		N/A	---	---
Filter Changed		Client Info		N/A	---	---
Sample Status				SEVERE	---	---

Iron	ppm	ASTM D6130		0	---	---
Chromium	ppm	ASTM D6130		<1	---	---
Nickel	ppm	ASTM D6130		<1	---	---
Titanium	ppm	ASTM D6130		0	---	---
Silver	ppm	ASTM D6130		0	---	---
Aluminum	ppm	ASTM D6130		1	---	---
Lead	ppm	ASTM D6130		0	---	---
Copper	ppm	ASTM D6130		<1	---	---
Tin	ppm	ASTM D6130		0	---	---
Vanadium	ppm	ASTM D6130		0	---	---
White Metal	scalar	*Visual	NONE	NONE	---	---
Yellow Metal	scalar	*Visual	NONE	NONE	---	---

CONTAMINATION

Excessive fuel present. Tests confirm the presence of fuel in the diesel exhaust fluid (def).

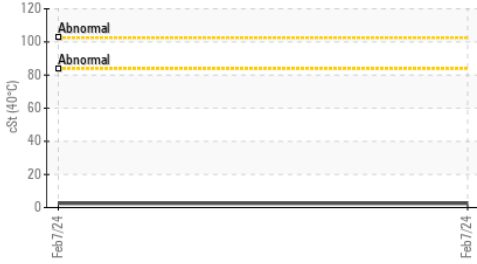
Silicon	ppm	ASTM D6130		<1	---	---
Potassium	ppm	ASTM D6130	>20	<1	---	---
Water	%	ASTM D6304		0.017	---	---
ppm Water	ppm	ASTM D6304		178	---	---
Silt	scalar	*Visual	NONE	NONE	---	---
Debris	scalar	*Visual	NONE	NONE	---	---
Sand/Dirt	scalar	*Visual	NONE	NONE	---	---
Appearance	scalar	*Visual	NORML	LAYRD	---	---
Odor	scalar	*Visual	NORML	NORML	---	---
Emulsified Water	scalar	*Visual		NEG	---	---

FLUID CONDITION

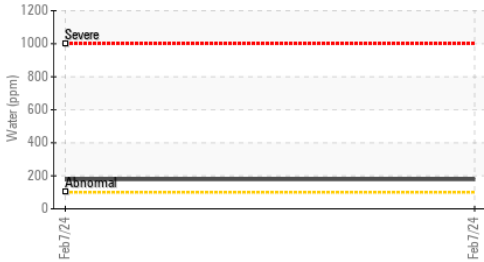
The diesel exhaust fluid (def) is no longer serviceable due to the presence of contaminants.

Sodium	ppm	ASTM D6130		0	---	---
Boron	ppm	ASTM D6130		0	---	---
Barium	ppm	ASTM D6130		8	---	---
Molybdenum	ppm	ASTM D6130		0	---	---
Manganese	ppm	ASTM D6130		0	---	---
Magnesium	ppm	ASTM D6130		<1	---	---
Calcium	ppm	ASTM D6130		<1	---	---
Phosphorus	ppm	ASTM D6130		2	---	---
Zinc	ppm	ASTM D6130		5	---	---
Sulfur	ppm	ASTM D6130		▲ 115	---	---
Visc @ 40°C	cSt	ASTM D445		▲ 2.56	---	---

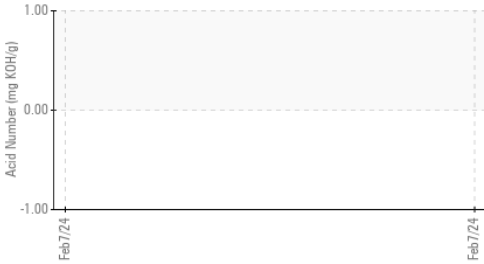
▲ Viscosity @ 40°C



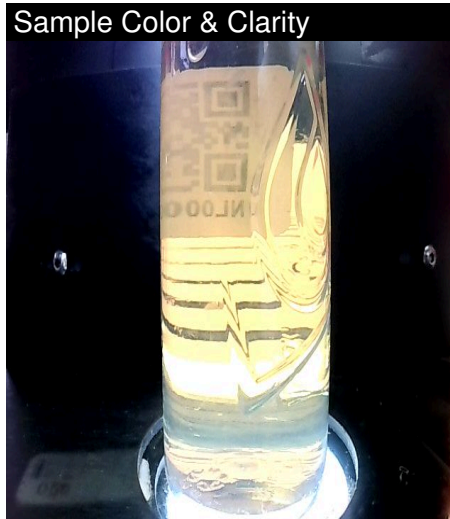
Water (KF)



Acid Number



Sample Color & Clarity



Certificate L2367

Laboratory : WearCheck USA - 501 Madison Ave., Cary, NC 27513
Sample No. : NL0001942
Lab Number : 06088462
Unique Number : 10875907
Test Package : FLEET (Additional Tests: KF, PrtCount)

Received : 13 Feb 2024
Tested : 19 Feb 2024
Diagnosed : 19 Feb 2024 - Doug Bogart

KIRK NATIONALEASE - SHOP 54
 3452 St. Johns Rd.
 LIMA, OH
 US 45804

Contact: Mason Reinhold
 shop54@knl.cc

To discuss this sample report, contact Customer Service at 1-800-237-1369.

* - Denotes test methods that are outside of the ISO 17025 scope of accreditation.

Statements of conformity to specifications are based on the simple acceptance decision rule (JCGM 106:2012)

T: (419)229-3848
 F: (419)229-1395