



# OIL ANALYSIS REPORT

WEAR	<b>ABNORMAL</b>
CONTAMINATION	<b>ABNORMAL</b>
FLUID CONDITION	<b>ABNORMAL</b>

Machine Id  
**45756**  
Component  
**Diesel Engine**  
Fluid  
**MOBIL 15W40 (--- QTS)**

## RECOMMENDATION

We advise that you check for the source of the coolant leak. Check for low coolant level. Oil and filter change at the time of sampling has been noted. We recommend an early resample to monitor this condition.

## WEAR

The aluminum level is abnormal. All other component wear rates are normal.

## CONTAMINATION

Sodium and/or potassium levels are high.

## FLUID CONDITION

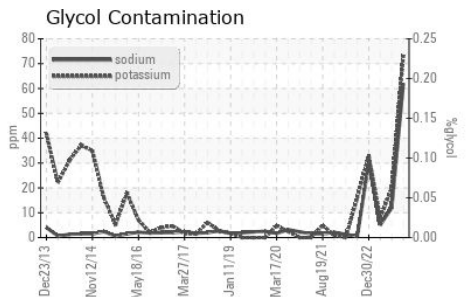
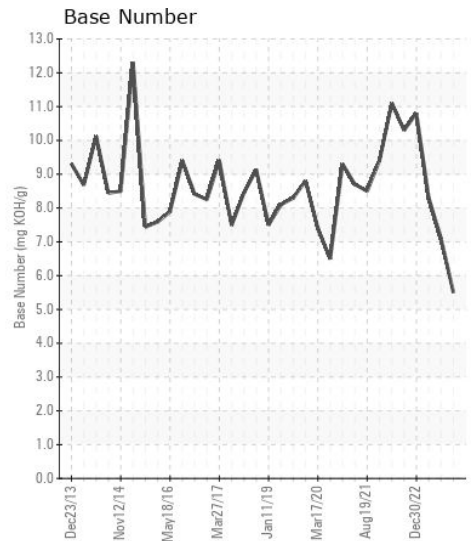
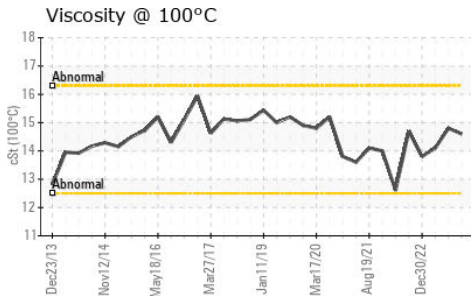
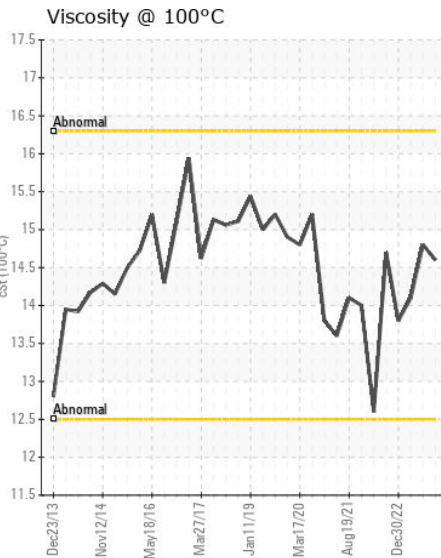
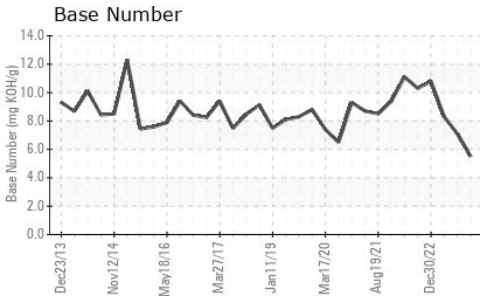
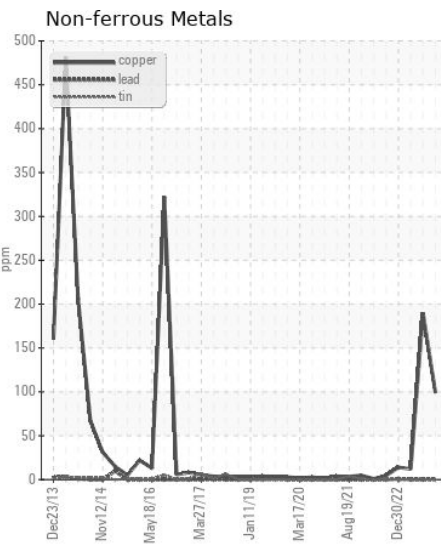
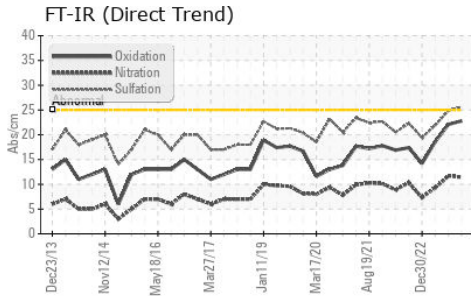
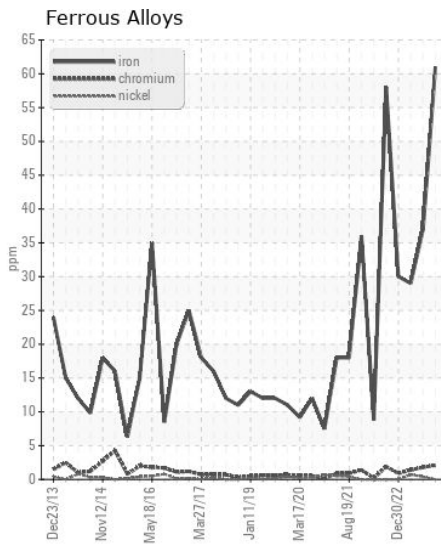
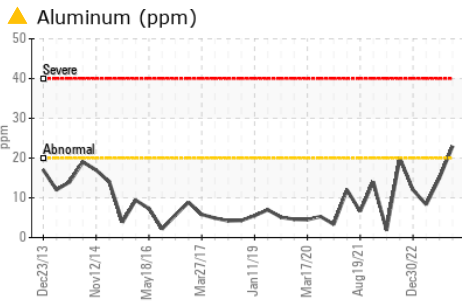
The BN result indicates that there is suitable alkalinity remaining in the oil.

Test	UOM	Method	Limit/Abn	Current	History1	History2
Sample Number		Client Info		<b>WC0881784</b>	WC0795661	WC0794587
Sample Date		Client Info		<b>01 Apr 2024</b>	03 Nov 2023	17 May 2023
Machine Age	mls	Client Info		<b>581202</b>	549666	511644
Oil Age	mls	Client Info		<b>30000</b>	25000	21628
Filter Age	mls	Client Info		<b>30000</b>	25000	21628
Oil Changed		Client Info		<b>Changed</b>	Changed	Changed
Filter Changed		Client Info		<b>Changed</b>	Changed	Changed
Sample Status				<b>ABNORMAL</b>	ATTENTION	NORMAL

Iron	ppm	ASTM D5185m	>100	<b>61</b>	37	29
Chromium	ppm	ASTM D5185m	>20	<b>2</b>	2	1
Nickel	ppm	ASTM D5185m	>4	<b>0</b>	<1	<1
Titanium	ppm	ASTM D5185m		<b>0</b>	<1	0
Silver	ppm	ASTM D5185m	>3	<b>0</b>	0	0
Aluminum	ppm	ASTM D5185m	>20	<b>▲ 23</b>	15	8
Lead	ppm	ASTM D5185m	>40	<b>&lt;1</b>	0	0
Copper	ppm	ASTM D5185m	>330	<b>99</b>	190	12
Tin	ppm	ASTM D5185m	>15	<b>0</b>	<1	<1
Vanadium	ppm	ASTM D5185m		<b>0</b>	0	0
White Metal	scalar	*Visual	NONE	<b>NONE</b>	NONE	NONE
Yellow Metal	scalar	*Visual	NONE	<b>NONE</b>	NONE	NONE

Silicon	ppm	ASTM D5185m	>25	<b>9</b>	8	12
Potassium	ppm	ASTM D5185m	>20	<b>▲ 73</b>	20	8
Fuel		WC Method	>5	<b>&lt;1.0</b>	<1.0	<1.0
Water		WC Method	>0.2	<b>NEG</b>	NEG	NEG
Glycol	%	*ASTM D2982		<b>NEG</b>	NEG	NEG
Soot %	%	*ASTM D7844	>3	<b>1.2</b>	1.5	0.9
Nitration	Abs/cm	*ASTM D7624	>20	<b>11.4</b>	11.7	9.3
Sulfation	Abs/.1mm	*ASTM D7415	>30	<b>25.6</b>	24.9	21.9
Silt	scalar	*Visual	NONE	<b>NONE</b>	NONE	NONE
Debris	scalar	*Visual	NONE	<b>NONE</b>	NONE	NONE
Sand/Dirt	scalar	*Visual	NONE	<b>NONE</b>	NONE	NONE
Appearance	scalar	*Visual	NORML	<b>NORML</b>	NORML	NORML
Odor	scalar	*Visual	NORML	<b>NORML</b>	NORML	NORML
Emulsified Water	scalar	*Visual	>0.2	<b>NEG</b>	NEG	NEG

Sodium	ppm	ASTM D5185m	>118	<b>▲ 62</b>	12	5
Boron	ppm	ASTM D5185m		<b>21</b>	2	2
Barium	ppm	ASTM D5185m		<b>0</b>	0	2
Molybdenum	ppm	ASTM D5185m		<b>87</b>	62	66
Manganese	ppm	ASTM D5185m		<b>&lt;1</b>	<1	<1
Magnesium	ppm	ASTM D5185m		<b>754</b>	965	920
Calcium	ppm	ASTM D5185m		<b>1373</b>	1112	1143
Phosphorus	ppm	ASTM D5185m		<b>1063</b>	1011	1016
Zinc	ppm	ASTM D5185m		<b>1351</b>	1292	1276
Sulfur	ppm	ASTM D5185m		<b>3070</b>	2377	3464
Oxidation	Abs/.1mm	*ASTM D7414	>25	<b>22.8</b>	22.1	18.6
Base Number (BN)	mg KOH/g	ASTM D2896		<b>5.5</b>	7.1	8.3
Visc @ 100°C	cSt	ASTM D445		<b>14.6</b>	14.8	14.1



Certificate L2367

**Laboratory** : WearCheck USA - 501 Madison Ave., Cary, NC 27513  
**Sample No.** : WC0881784  
**Lab Number** : 06159719  
**Unique Number** : 10995142  
**Test Package** : FLEET ( Additional Tests: Glycol )

**SALEM NATIONALEASE CORPORATION**  
 198 PARK PLAZA DRIVE  
 WINSTON SALEM, NC  
 US 27105  
 Contact: Audrey Hopkins  
 Audrey.Hopkins@salemcorp.com  
 T: (336)767-9642  
 F: x:

To discuss this sample report, contact Customer Service at 1-800-237-1369.

\* - Denotes test methods that are outside of the ISO 17025 scope of accreditation.

Statements of conformity to specifications are based on the simple acceptance decision rule (JCGM 106:2012)