



# WEAR CHECK

## OIL ANALYSIS REPORT

WEAR	<b>NORMAL</b>
CONTAMINATION	<b>NORMAL</b>
FLUID CONDITION	<b>NORMAL</b>

Machine Id  
**33701**  
 Component  
**Diesel Engine**  
 Fluid  
**CHEVRON 15W40 (--- QTS)**

### RECOMMENDATION

Resample at the next service interval to monitor. Please specify the component make and model with your next sample.

Test	UOM	Method	Limit/Abn	Current	History1	History2
Sample Number		Client Info		<b>WC0948416</b>	WC0881491	WC0855571
Sample Date		Client Info		<b>07 Jun 2024</b>	02 Feb 2024	30 Oct 2023
Machine Age	mls	Client Info		<b>127987</b>	103815	85627
Oil Age	mls	Client Info		<b>26972</b>	25000	25000
Filter Age	mls	Client Info		<b>26972</b>	25000	25000
Oil Changed		Client Info		<b>Changed</b>	Changed	Changed
Filter Changed		Client Info		<b>Changed</b>	Changed	Changed
Sample Status				<b>NORMAL</b>	NORMAL	NORMAL

### WEAR

All component wear rates are normal.

Iron	ppm	ASTM D5185m	>100	<b>15</b>	14	14
Chromium	ppm	ASTM D5185m	>20	<b>&lt;1</b>	1	<1
Nickel	ppm	ASTM D5185m	>4	<b>&lt;1</b>	<1	0
Titanium	ppm	ASTM D5185m		<b>&lt;1</b>	<1	0
Silver	ppm	ASTM D5185m	>3	<b>&lt;1</b>	<1	<1
Aluminum	ppm	ASTM D5185m	>20	<b>4</b>	5	7
Lead	ppm	ASTM D5185m	>40	<b>&lt;1</b>	<1	0
Copper	ppm	ASTM D5185m	>330	<b>9</b>	49	116
Tin	ppm	ASTM D5185m	>15	<b>&lt;1</b>	<1	<1
Vanadium	ppm	ASTM D5185m		<b>&lt;1</b>	<1	0
White Metal	scalar	*Visual	NONE	<b>NONE</b>	NONE	NONE
Yellow Metal	scalar	*Visual	NONE	<b>NONE</b>	NONE	NONE

### CONTAMINATION

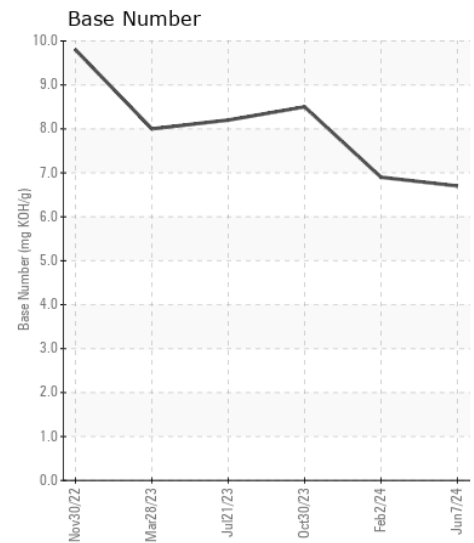
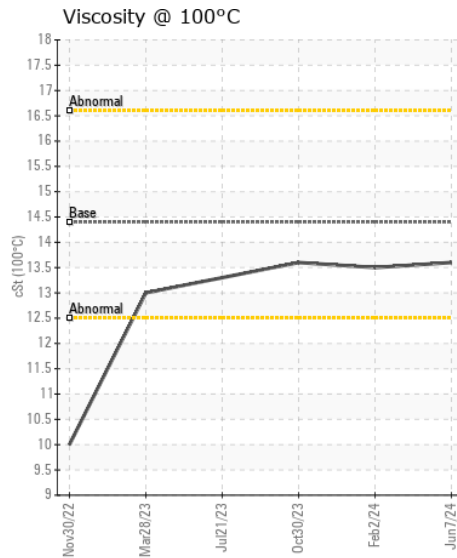
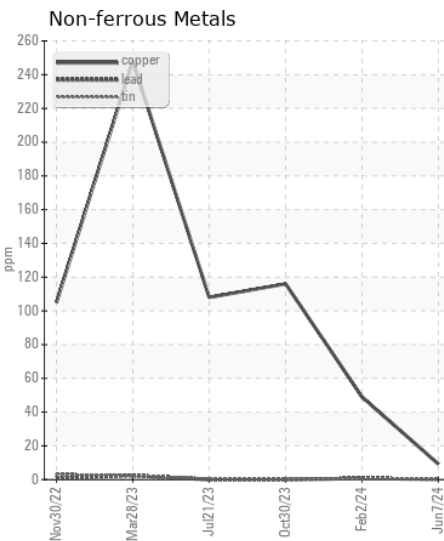
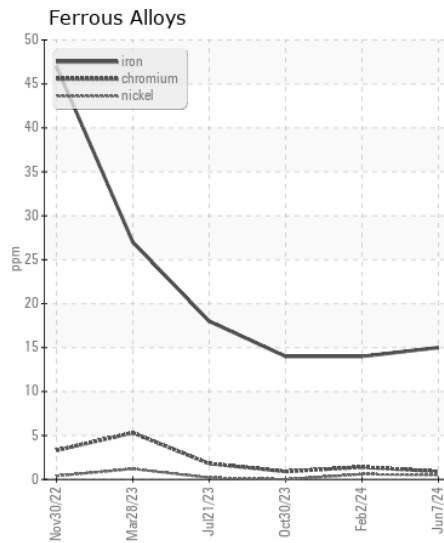
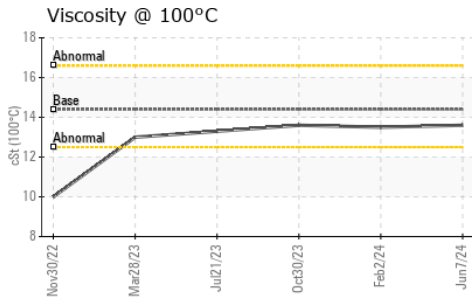
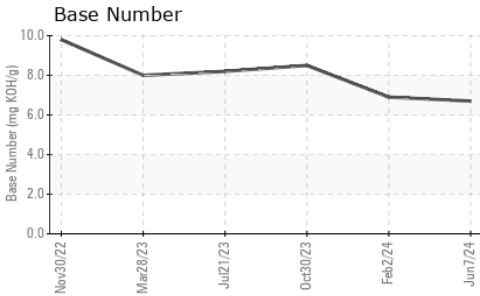
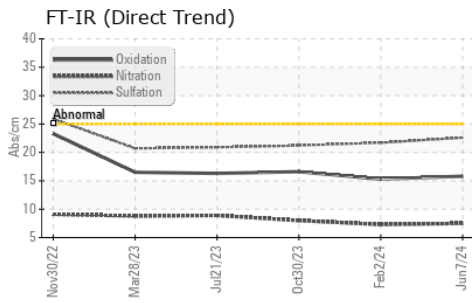
There is no indication of any contamination in the oil.

Silicon	ppm	ASTM D5185m	>25	<b>11</b>	6	6
Potassium	ppm	ASTM D5185m	>20	<b>7</b>	11	14
Fuel		WC Method	>5	<b>&lt;1.0</b>	<1.0	<1.0
Water		WC Method	>0.2	<b>NEG</b>	NEG	NEG
Glycol		WC Method		<b>NEG</b>	NEG	NEG
Soot %	%	*ASTM D7844	>3	<b>0.6</b>	0.5	0.7
Nitration	Abs/cm	*ASTM D7624	>20	<b>7.5</b>	7.3	8.0
Sulfation	Abs/.1mm	*ASTM D7415	>30	<b>22.6</b>	21.7	21.2
Silt	scalar	*Visual	NONE	<b>NONE</b>	NONE	NONE
Debris	scalar	*Visual	NONE	<b>NONE</b>	NONE	NONE
Sand/Dirt	scalar	*Visual	NONE	<b>NONE</b>	NONE	NONE
Appearance	scalar	*Visual	NORML	<b>NORML</b>	NORML	NORML
Odor	scalar	*Visual	NORML	<b>NORML</b>	NORML	NORML
Emulsified Water	scalar	*Visual	>0.2	<b>NEG</b>	NEG	NEG

### FLUID CONDITION

The BN result indicates that there is suitable alkalinity remaining in the oil. The condition of the oil is suitable for further service.

Sodium	ppm	ASTM D5185m	>50	<b>&lt;1</b>	0	<1
Boron	ppm	ASTM D5185m		<b>287</b>	230	4
Barium	ppm	ASTM D5185m		<b>&lt;1</b>	0	0
Molybdenum	ppm	ASTM D5185m		<b>84</b>	78	62
Manganese	ppm	ASTM D5185m		<b>&lt;1</b>	<1	<1
Magnesium	ppm	ASTM D5185m		<b>380</b>	531	1032
Calcium	ppm	ASTM D5185m		<b>1324</b>	1223	1112
Phosphorus	ppm	ASTM D5185m		<b>1052</b>	984	1100
Zinc	ppm	ASTM D5185m		<b>1211</b>	1164	1317
Sulfur	ppm	ASTM D5185m		<b>3225</b>	3249	2685
Oxidation	Abs/.1mm	*ASTM D7414	>25	<b>15.8</b>	15.3	16.6
Base Number (BN)	mg KOH/g	ASTM D2896		<b>6.7</b>	6.9	8.5
Visc @ 100°C	cSt	ASTM D445	14.4	<b>13.6</b>	13.5	13.6



Certificate L2367

**Laboratory** : WearCheck USA - 501 Madison Ave., Cary, NC 27513  
**Sample No.** : WC0948416  
**Lab Number** : 06213020  
**Unique Number** : 11085884  
**Test Package** : FLEET

**Received** : 17 Jun 2024  
**Tested** : 19 Jun 2024  
**Diagnosed** : 19 Jun 2024 - Wes Davis

**SALEM NATIONALEASE CORPORATION**  
 198 PARK PLAZA DRIVE  
 WINSTON SALEM, NC  
 US 27105

Contact: Audrey Hopkins  
 Audrey.Hopkins@salemcorp.com  
 T: (336)767-9642

To discuss this sample report, contact Customer Service at 1-800-237-1369.

\* - Denotes test methods that are outside of the ISO 17025 scope of accreditation.

Statements of conformity to specifications are based on the simple acceptance decision rule (JCGM 106:2012)

F: x: