



WEAR	NORMAL
CONTAMINATION	NORMAL
FLUID CONDITION	NORMAL

Machine Id
JOHN DEERE 4038R 1N04038RCE0001887

Component
Hydraulic System

Fluid
JOHN DEERE ENGINE OIL PLUS 50 II 10W30 (--- GAL)

RECOMMENDATION

Resample at the next service interval to monitor.

Test	UOM	Method	Limit/Abn	Current	History1	History2
Sample Number		Client Info		JR0172274	---	---
Sample Date		Client Info		27 Jun 2024	---	---
Machine Age	hrs	Client Info		1515	---	---
Oil Age	hrs	Client Info		0	---	---
Filter Age	hrs	Client Info		0	---	---
Oil Changed		Client Info		Not Chngd	---	---
Filter Changed		Client Info		Not Chngd	---	---
Sample Status				NORMAL	---	---

WEAR

All component wear rates are normal.

PQ		ASTM D8184		16	---	---
Iron	ppm	ASTM D5185m	>20	7	---	---
Chromium	ppm	ASTM D5185m	>10	0	---	---
Nickel	ppm	ASTM D5185m	>10	0	---	---
Titanium	ppm	ASTM D5185m		0	---	---
Silver	ppm	ASTM D5185m		<1	---	---
Aluminum	ppm	ASTM D5185m	>10	1	---	---
Lead	ppm	ASTM D5185m	>10	2	---	---
Copper	ppm	ASTM D5185m	>75	3	---	---
Tin	ppm	ASTM D5185m	>10	<1	---	---
Vanadium	ppm	ASTM D5185m		0	---	---
White Metal	scalar	*Visual	NONE	LIGHT	---	---
Yellow Metal	scalar	*Visual	NONE	NONE	---	---

CONTAMINATION

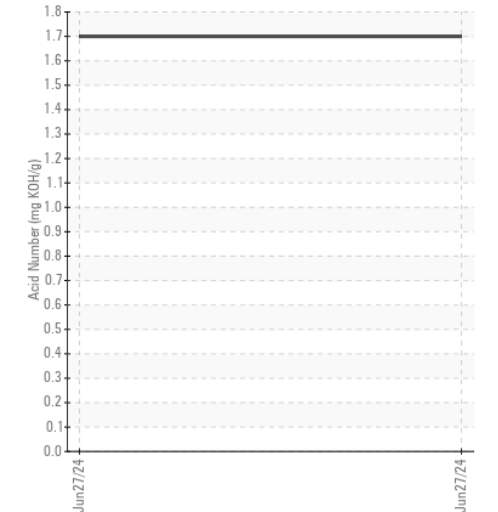
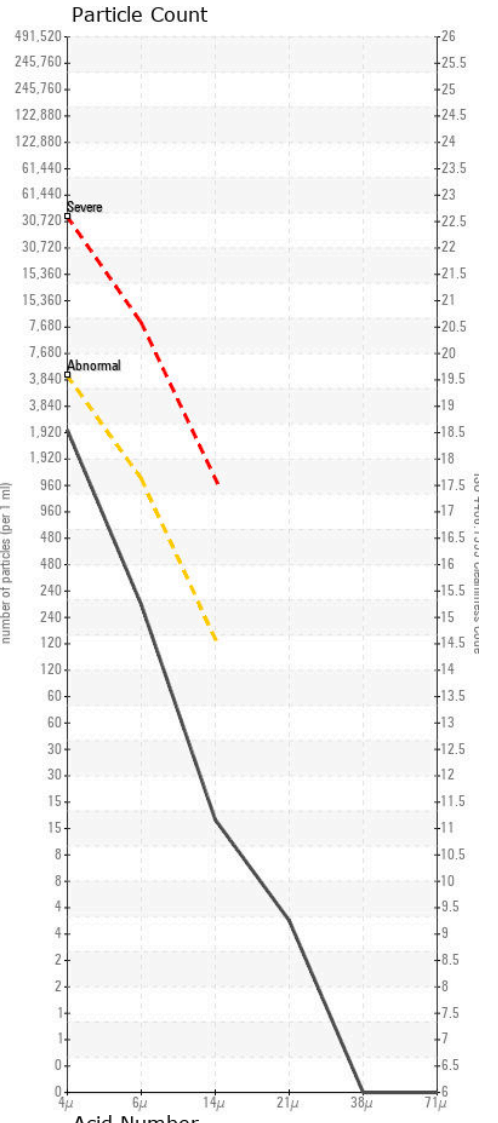
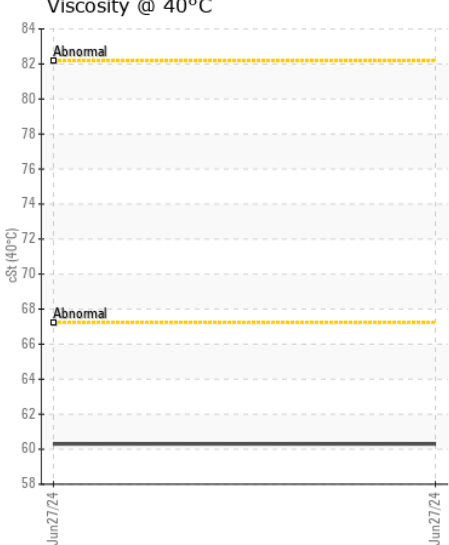
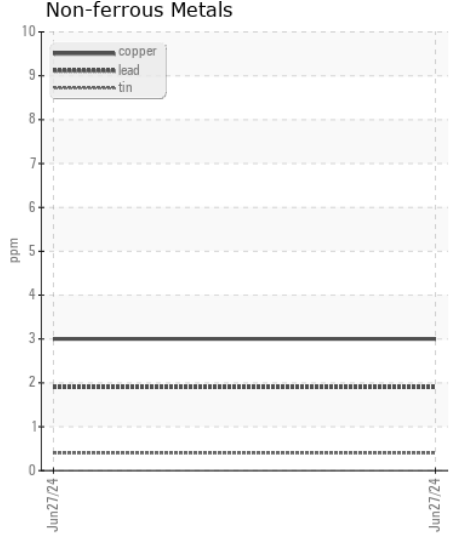
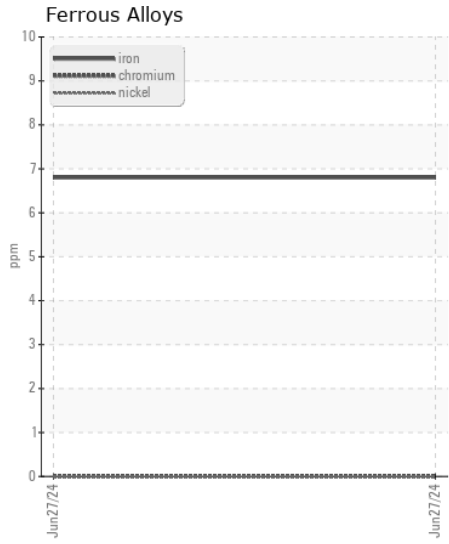
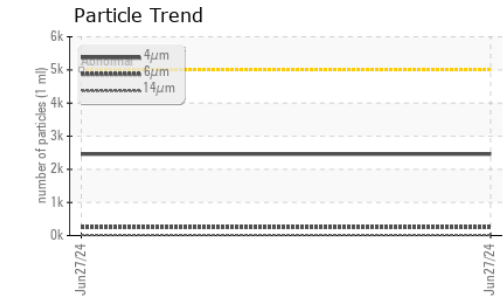
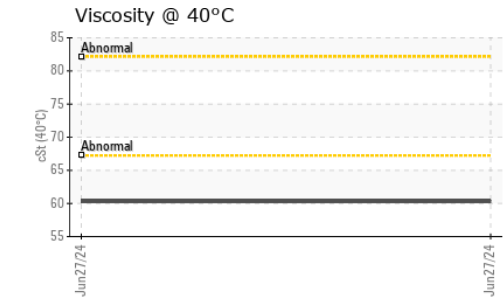
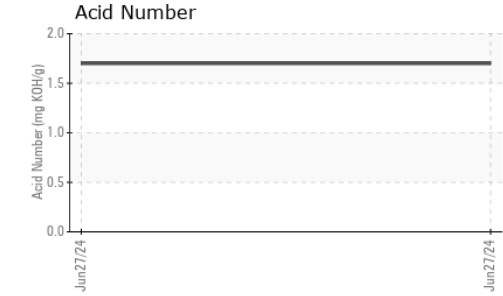
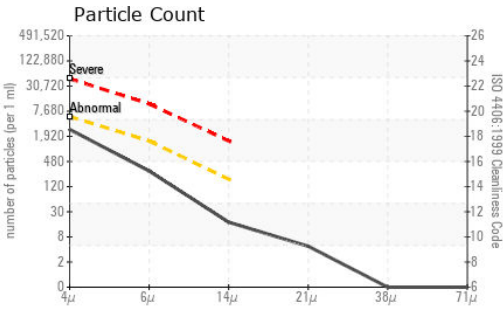
The amount and size of particulates present in the system are acceptable. There is no indication of any contamination in the oil.

Silicon	ppm	ASTM D5185m	>20	5	---	---
Potassium	ppm	ASTM D5185m	>20	2	---	---
Water		WC Method	>0.1	NEG	---	---
Particles >4µm		ASTM D7647	>5000	2459	---	---
Particles >6µm		ASTM D7647	>1300	250	---	---
Particles >14µm		ASTM D7647	>160	15	---	---
Particles >21µm		ASTM D7647	>40	4	---	---
Particles >38µm		ASTM D7647	>10	0	---	---
Particles >71µm		ASTM D7647	>3	0	---	---
Oil Cleanliness		ISO 4406 (c)	>19/17/14	18/15/11	---	---
Silt	scalar	*Visual	NONE	NONE	---	---
Debris	scalar	*Visual	NONE	NONE	---	---
Sand/Dirt	scalar	*Visual	NONE	NONE	---	---
Appearance	scalar	*Visual	NORML	NORML	---	---
Odor	scalar	*Visual	NORML	NORML	---	---
Emulsified Water	scalar	*Visual	>0.1	NEG	---	---

FLUID CONDITION

The AN level is acceptable for this fluid. The condition of the oil is suitable for further service.

Sodium	ppm	ASTM D5185m		5	---	---
Boron	ppm	ASTM D5185m		21	---	---
Barium	ppm	ASTM D5185m		0	---	---
Molybdenum	ppm	ASTM D5185m		11	---	---
Manganese	ppm	ASTM D5185m		<1	---	---
Magnesium	ppm	ASTM D5185m		141	---	---
Calcium	ppm	ASTM D5185m		2486	---	---
Phosphorus	ppm	ASTM D5185m		1066	---	---
Zinc	ppm	ASTM D5185m		1227	---	---
Sulfur	ppm	ASTM D5185m		4465	---	---
Acid Number (AN)	mg KOH/g	ASTM D8045		1.70	---	---
Visc @ 40°C	cSt	ASTM D445		60.3	---	---



Certificate L2367

Laboratory : WearCheck USA - 501 Madison Ave., Cary, NC 27513
Sample No. : JR0172274 **Received** : 01 Jul 2024
Lab Number : 06224433 **Tested** : 02 Jul 2024
Unique Number : 11102630 **Diagnosed** : 02 Jul 2024 - Don Baldrige
Test Package : CONST (Additional Tests: PQ)

To discuss this sample report, contact Customer Service at 1-800-237-1369.

* - Denotes test methods that are outside of the ISO 17025 scope of accreditation.

Statements of conformity to specifications are based on the simple acceptance decision rule (JCGM 106:2012)

JRE - WAKEFIELD
 10489 GENERAL MAHONE HWY
 WAKEFIELD, VA
 US 23888
 Contact: BILL ACKER
 backer@jamesriverequipment.com
 T: (757)899-3232
 F: (757)899-6464