



# OIL ANALYSIS REPORT

WEAR	<b>NORMAL</b>
CONTAMINATION	<b>NORMAL</b>
FLUID CONDITION	<b>NORMAL</b>

Machine Id  
**34093**  
 Component  
**Diesel Engine**  
 Fluid  
**EXXON 15W40 (--- GAL)**

## RECOMMENDATION

Resample at the next service interval to monitor. Please specify the component make and model with your next sample.

Test	UOM	Method	Limit/Abn	Current	History1	History2
Sample Number		Client Info		<b>WC0938684</b>	WC0866990	WC0866928
Sample Date		Client Info		<b>27 Jun 2024</b>	05 Apr 2024	24 Oct 2023
Machine Age	mls	Client Info		<b>181359</b>	152906	111495
Oil Age	mls	Client Info		<b>25913</b>	22641	25105
Filter Age	mls	Client Info		<b>25913</b>	22641	25105
Oil Changed		Client Info		<b>Changed</b>	Changed	Changed
Filter Changed		Client Info		<b>Changed</b>	Changed	Changed
Sample Status				<b>NORMAL</b>	NORMAL	NORMAL

## WEAR

All component wear rates are normal.

Iron	ppm	ASTM D5185m	>100	<b>9</b>	11	16
Chromium	ppm	ASTM D5185m	>20	<b>&lt;1</b>	1	<1
Nickel	ppm	ASTM D5185m	>4	<b>0</b>	1	<1
Titanium	ppm	ASTM D5185m		<b>0</b>	<1	<1
Silver	ppm	ASTM D5185m	>3	<b>0</b>	0	0
Aluminum	ppm	ASTM D5185m	>20	<b>2</b>	4	4
Lead	ppm	ASTM D5185m	>40	<b>0</b>	<1	<1
Copper	ppm	ASTM D5185m	>330	<b>9</b>	14	31
Tin	ppm	ASTM D5185m	>15	<b>&lt;1</b>	2	2
Vanadium	ppm	ASTM D5185m		<b>0</b>	<1	0
White Metal	scalar	*Visual	NONE	<b>NONE</b>	NONE	NONE
Yellow Metal	scalar	*Visual	NONE	<b>NONE</b>	NONE	NONE

## CONTAMINATION

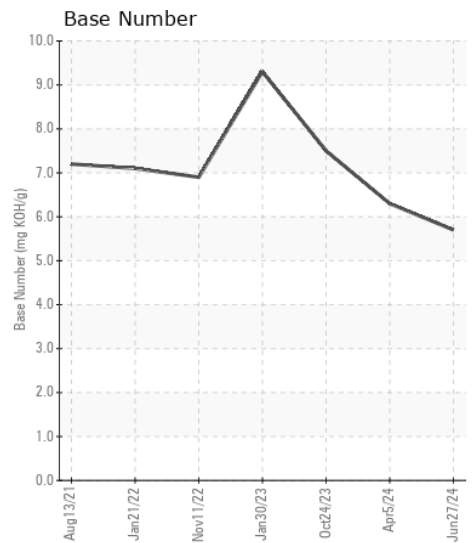
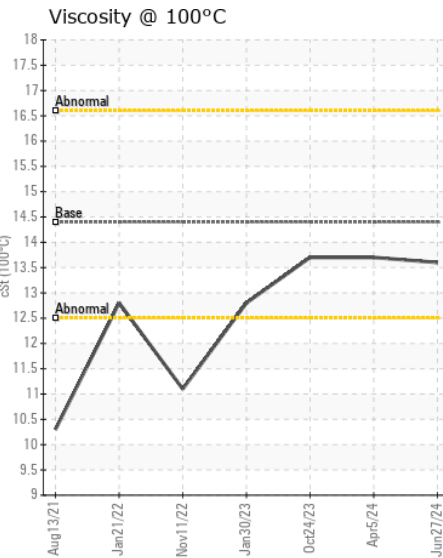
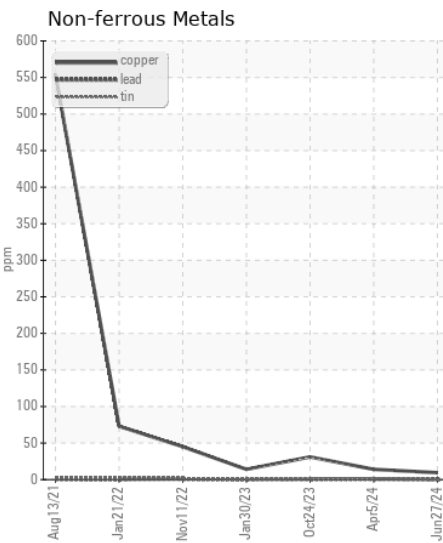
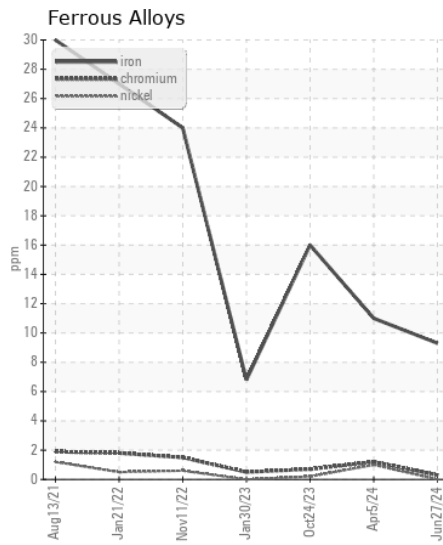
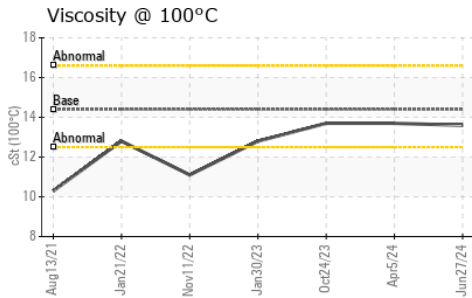
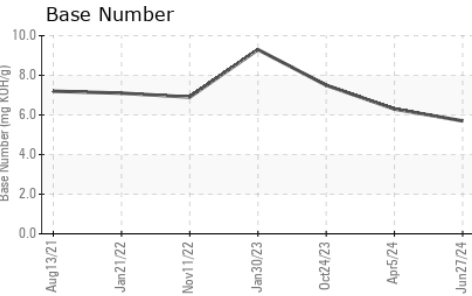
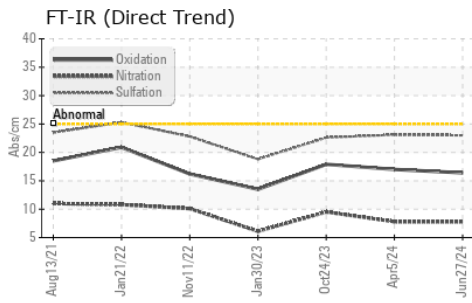
There is no indication of any contamination in the oil.

Silicon	ppm	ASTM D5185m	>25	<b>6</b>	7	4
Potassium	ppm	ASTM D5185m	>20	<b>2</b>	2	4
Fuel		WC Method	>5	<b>&lt;1.0</b>	<1.0	<1.0
Water		WC Method	>0.2	<b>NEG</b>	NEG	NEG
Glycol		WC Method		<b>NEG</b>	NEG	NEG
Soot %	%	*ASTM D7844	>3	<b>0.6</b>	0.5	0.8
Nitration	Abs/cm	*ASTM D7624	>20	<b>7.8</b>	7.8	9.5
Sulfation	Abs/.1mm	*ASTM D7415	>30	<b>23.0</b>	23.1	22.6
Silt	scalar	*Visual	NONE	<b>NONE</b>	NONE	NONE
Debris	scalar	*Visual	NONE	<b>NONE</b>	NONE	NONE
Sand/Dirt	scalar	*Visual	NONE	<b>NONE</b>	NONE	NONE
Appearance	scalar	*Visual	NORML	<b>NORML</b>	NORML	NORML
Odor	scalar	*Visual	NORML	<b>NORML</b>	NORML	NORML
Emulsified Water	scalar	*Visual	>0.2	<b>NEG</b>	NEG	NEG

## FLUID CONDITION

The BN result indicates that there is suitable alkalinity remaining in the oil. The condition of the oil is suitable for further service.

Sodium	ppm	ASTM D5185m		<b>1</b>	2	2
Boron	ppm	ASTM D5185m		<b>161</b>	307	1
Barium	ppm	ASTM D5185m		<b>&lt;1</b>	<1	0
Molybdenum	ppm	ASTM D5185m		<b>86</b>	94	65
Manganese	ppm	ASTM D5185m		<b>&lt;1</b>	1	<1
Magnesium	ppm	ASTM D5185m		<b>430</b>	457	1005
Calcium	ppm	ASTM D5185m		<b>1535</b>	1425	1127
Phosphorus	ppm	ASTM D5185m		<b>1046</b>	1046	966
Zinc	ppm	ASTM D5185m		<b>1345</b>	1280	1266
Sulfur	ppm	ASTM D5185m		<b>3493</b>	3219	2778
Oxidation	Abs/.1mm	*ASTM D7414	>25	<b>16.4</b>	17.0	17.9
Base Number (BN)	mg KOH/g	ASTM D2896		<b>5.7</b>	6.3	7.5
Visc @ 100°C	cSt	ASTM D445	14.4	<b>13.6</b>	13.7	13.7



Certificate L2367

**Laboratory** : WearCheck USA - 501 Madison Ave., Cary, NC 27513  
**Sample No.** : WC0938684  
**Lab Number** : 06229441  
**Unique Number** : 11112934  
**Test Package** : FLEET

**SALEM NATIONALEASE CORPORATION**  
 198 PARK PLAZA DRIVE  
 WINSTON SALEM, NC  
 US 27105  
 Contact: Audrey Hopkins  
 Audrey.Hopkins@salemcorp.com  
 T: (336)767-9642  
 F: x:

To discuss this sample report, contact Customer Service at 1-800-237-1369.

\* - Denotes test methods that are outside of the ISO 17025 scope of accreditation.

Statements of conformity to specifications are based on the simple acceptance decision rule (JCGM 106:2012)