



OIL ANALYSIS REPORT

WEAR	NORMAL
CONTAMINATION	ATTENTION
FLUID CONDITION	NORMAL

Machine Id
2567
Component
Hydraulic System
Fluid
HYDREX AW 32 (--- QTS)

RECOMMENDATION

The filter change at the time of sampling has been noted. Resample at the next service interval to monitor. Please specify the component make and model with your next sample.

WEAR

All component wear rates are normal.

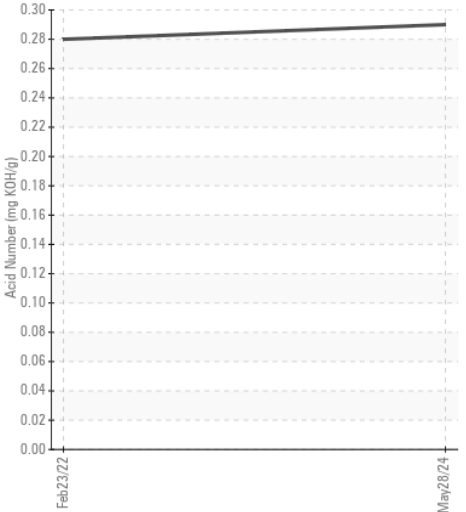
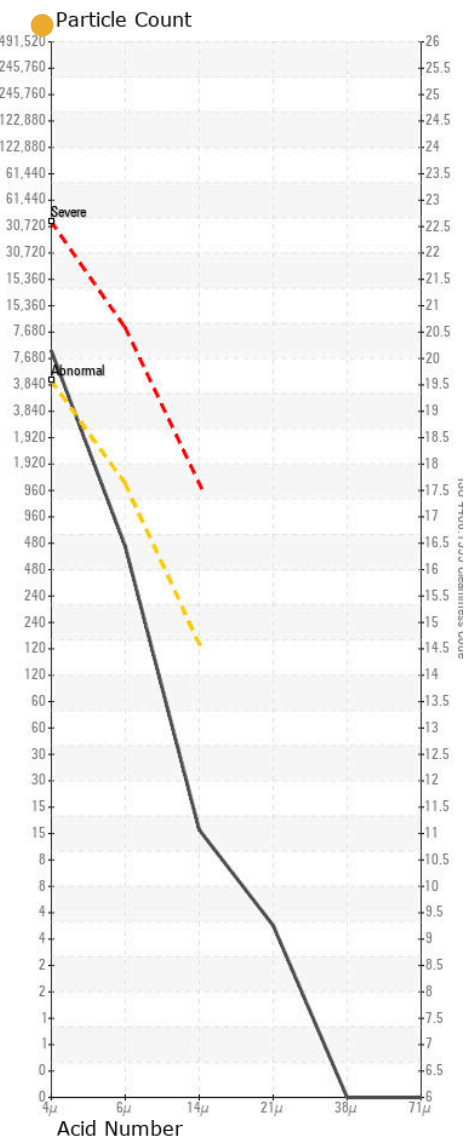
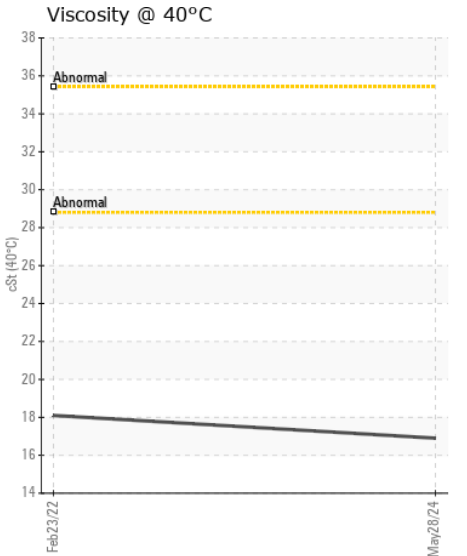
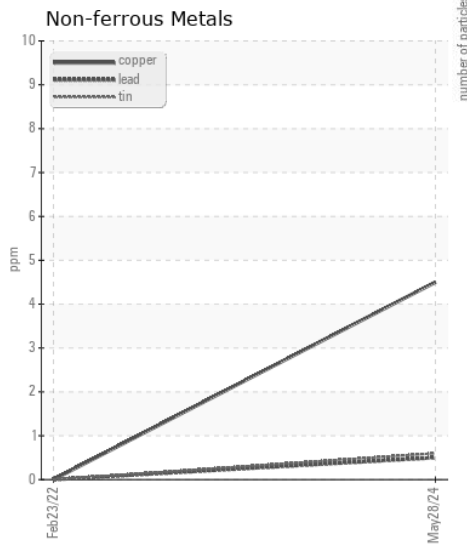
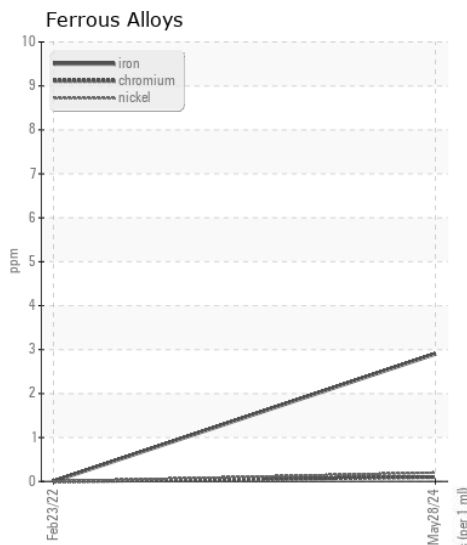
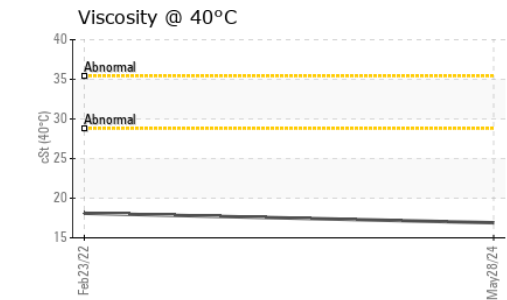
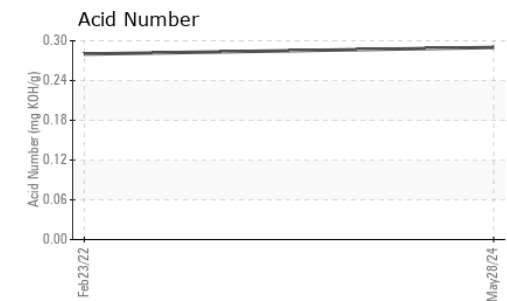
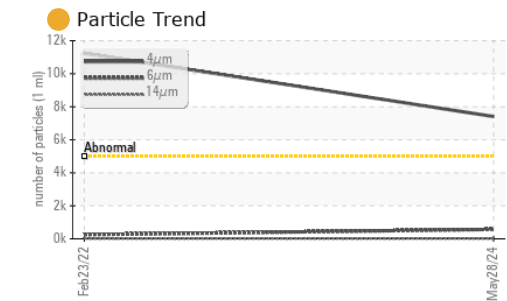
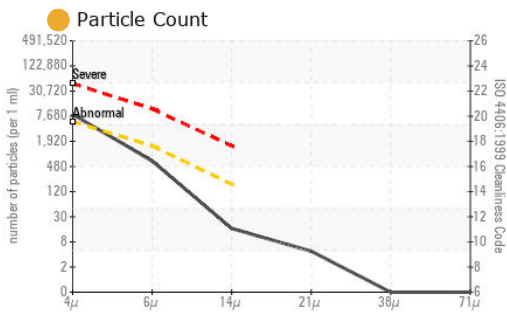
CONTAMINATION

There is a light amount of silt (particulates < 14 microns in size) present in the oil.

FLUID CONDITION

The AN level is acceptable for this fluid. The condition of the oil is suitable for further service.

Test	UOM	Method	Limit/Abn	Current	History1	History2
Sample Number		Client Info		RW0005349	RW0003000	---
Sample Date		Client Info		28 May 2024	23 Feb 2022	---
Machine Age	hrs	Client Info		4170	3532	---
Oil Age	hrs	Client Info		640	0	---
Filter Age	hrs	Client Info		320	0	---
Oil Changed		Client Info		Changed	Changed	---
Filter Changed		Client Info		Changed	Changed	---
Sample Status				ATTENTION	ABNORMAL	---
Iron	ppm	ASTM D5185m	>20	3	0	---
Chromium	ppm	ASTM D5185m	>10	<1	0	---
Nickel	ppm	ASTM D5185m	>10	<1	0	---
Titanium	ppm	ASTM D5185m		<1	0	---
Silver	ppm	ASTM D5185m		<1	0	---
Aluminum	ppm	ASTM D5185m	>10	2	0	---
Lead	ppm	ASTM D5185m	>10	<1	0	---
Copper	ppm	ASTM D5185m	>75	4	0	---
Tin	ppm	ASTM D5185m	>10	<1	0	---
Vanadium	ppm	ASTM D5185m		<1	0	---
White Metal	scalar	*Visual	NONE	NONE	NONE	---
Yellow Metal	scalar	*Visual	NONE	NONE	NONE	---
Silicon	ppm	ASTM D5185m	>20	<1	0	---
Potassium	ppm	ASTM D5185m	>20	1	<1	---
Water		WC Method	>0.1	NEG	NEG	---
Particles >4µm		ASTM D7647	>5000	7407	▲ 11238	---
Particles >6µm		ASTM D7647	>1300	572	250	---
Particles >14µm		ASTM D7647	>160	14	11	---
Particles >21µm		ASTM D7647	>40	4	1	---
Particles >38µm		ASTM D7647	>10	0	0	---
Particles >71µm		ASTM D7647	>3	0	0	---
Oil Cleanliness		ISO 4406 (c)	>19/17/14	20/16/11	▲ 21/15/11	---
Silt	scalar	*Visual	NONE	NONE	NONE	---
Debris	scalar	*Visual	NONE	NONE	NONE	---
Sand/Dirt	scalar	*Visual	NONE	NONE	NONE	---
Appearance	scalar	*Visual	NORML	NORML	NORML	---
Odor	scalar	*Visual	NORML	NORML	NORML	---
Emulsified Water	scalar	*Visual	>0.1	NEG	NEG	---
Sodium	ppm	ASTM D5185m		0	0	---
Boron	ppm	ASTM D5185m		0	0	---
Barium	ppm	ASTM D5185m		<1	0	---
Molybdenum	ppm	ASTM D5185m		<1	0	---
Manganese	ppm	ASTM D5185m		<1	0	---
Magnesium	ppm	ASTM D5185m		1	0	---
Calcium	ppm	ASTM D5185m		46	<1	---
Phosphorus	ppm	ASTM D5185m		349	6	---
Zinc	ppm	ASTM D5185m		405	0	---
Sulfur	ppm	ASTM D5185m		819	9	---
Acid Number (AN)	mg KOH/g	ASTM D8045		0.29	0.28	---
Visc @ 40°C	cSt	ASTM D445		16.9	18.1	---



Certificate L2367

Laboratory : WearCheck USA - 501 Madison Ave., Cary, NC 27513

Sample No. : RW0005349

Lab Number : 06231470

Unique Number : 11114963

Test Package : MOB 2

Received : 09 Jul 2024

Tested : 10 Jul 2024

Diagnosed : 10 Jul 2024 - Wes Davis

NEWKIRK ELECTRIC

1875 ROBERTS ST.

MUSKEGON, MI

US 49442

Contact: ERIC KING

ewking@newkirk-electric.com

T: (231)206-6131

F: (231)724-4090

To discuss this sample report, contact Customer Service at 1-800-237-1369.

* - Denotes test methods that are outside of the ISO 17025 scope of accreditation.

Statements of conformity to specifications are based on the simple acceptance decision rule (JCGM 106:2012)