



OIL ANALYSIS REPORT

Sample Rating Trend

WEAR PARTICLES

Area
(N883WM)
 Machine Id
[N883WM] DEHAVILLAND DHC-8-Q400 PCE-FA0449
 Component
Chip Detector Filter
 Fluid
EASTMAN TURBO OIL 2380 (26 QTS)



DIAGNOSIS

Recommendation

We recommend a resample in 25 hours to monitor this sample.

Wear Particles

Two cutting wear chips were submitted for analysis. The first measures 2.3mm x 0.96mm, and the 2nd measures 1.6mm x 0.83mm with a thickness of 0.19mm. The particles were digested and analyzed by ICP Spectroscopy. The most likely alloy matches are Precipitation Hardening Steel (AMS 6415) and Low Alloy Steel (AISI 4340).

SAMPLE INFORMATION

method	limit/base	current	history1	history2
Sample Number	Client Info	WC0789101	---	---
Sample Date	Client Info	30 Jan 2023	---	---
Machine Age	hrs Client Info	17922	---	---
Oil Age	hrs Client Info	0	---	---
Oil Changed	Client Info	Not Changed	---	---
Sample Status		ABNORMAL	---	---

CONTAMINATION

method	limit/base	current	history1	history2
Water	WC Method	NEG	---	---

WEAR METALS

method	limit/base	current	history1	history2
Iron	ppm ASTM D5185(m)	91	---	---
Chromium	ppm ASTM D5185(m)	<1	---	---
Nickel	ppm ASTM D5185(m)	2	---	---

FERROGRAPHY

method	limit/base	current	history1	history2
Ferrous Rubbing	Scale 0-10 ASTM D7684*			
Ferrous Sliding	Scale 0-10 ASTM D7684*			
Ferrous Cutting	Scale 0-10 ASTM D7684*	▲ 2		
Ferrous Rolling	Scale 0-10 ASTM D7684*			
Ferrous Break-in	Scale 0-10 ASTM D7684*			
Ferrous Spheres	Scale 0-10 ASTM D7684*			
Ferrous Black Oxides	Scale 0-10 ASTM D7684*			
Ferrous Red Oxides	Scale 0-10 ASTM D7684*			
Ferrous Corrosive	Scale 0-10 ASTM D7684*			
Ferrous Other	Scale 0-10 ASTM D7684*			
Nonferrous Rubbing	Scale 0-10 ASTM D7684*			
Nonferrous Sliding	Scale 0-10 ASTM D7684*			
Nonferrous Cutting	Scale 0-10 ASTM D7684*			
Nonferrous Rolling	Scale 0-10 ASTM D7684*			
Nonferrous Other	Scale 0-10 ASTM D7684*			
Sand/Dirt	Scale 0-10 ASTM D7684*			
Fibres	Scale 0-10 ASTM D7684*			
Spheres	Scale 0-10 ASTM D7684*			
Other	Scale 0-10 ASTM D7684*			
Patch Weight	mg ASTM D7684*	N/A	---	---

ADDITIVES

method	limit/base	current	history1	history2
Molybdenum	ppm ASTM D5185(m) 0	<1	---	---

SAMPLE IMAGES

method	limit/base	current	history1	history2
Color			<i>no image</i>	<i>no image</i>
Bottom			<i>no image</i>	<i>no image</i>



FILTER REPORT

Area
(N883WM)
 Machine Id
[N883WM] DEHAVILLAND DHC-8-Q400 PCE-FA0449
 Component
Chip Detector Filter
 Fluid
EASTMAN TURBO OIL 2380 (26 QTS)

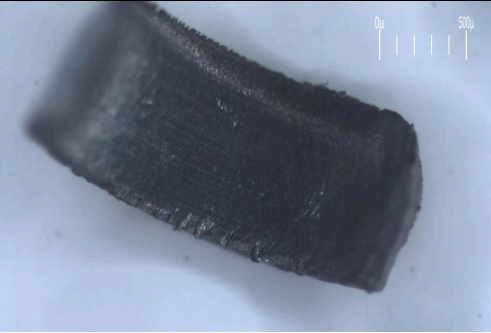
Magn: 10x Illum: RW



Magn: 30x Illum: RW



Magn: 30x Illum:



FERROGRAPHY		method	limit/base	current	history1	history2
Ferrous Rubbing	Scale 0-10	ASTM D7684*				
Ferrous Sliding	Scale 0-10	ASTM D7684*				
Ferrous Cutting	Scale 0-10	ASTM D7684*		▲ ■ 2		
Ferrous Rolling	Scale 0-10	ASTM D7684*				
Ferrous Break-in	Scale 0-10	ASTM D7684*				
Ferrous Spheres	Scale 0-10	ASTM D7684*				
Ferrous Black Oxides	Scale 0-10	ASTM D7684*				
Ferrous Red Oxides	Scale 0-10	ASTM D7684*				
Ferrous Corrosive	Scale 0-10	ASTM D7684*				
Ferrous Other	Scale 0-10	ASTM D7684*				
Nonferrous Rubbing	Scale 0-10	ASTM D7684*				
Nonferrous Sliding	Scale 0-10	ASTM D7684*				
Nonferrous Cutting	Scale 0-10	ASTM D7684*				
Nonferrous Rolling	Scale 0-10	ASTM D7684*				
Nonferrous Other	Scale 0-10	ASTM D7684*				
Sand/Dirt	Scale 0-10	ASTM D7684*				
Fibres	Scale 0-10	ASTM D7684*				
Spheres	Scale 0-10	ASTM D7684*				
Other	Scale 0-10	ASTM D7684*				
Patch Weight	mg	ASTM D7684*		N/A	---	---

WEAR

Two cutting wear chips were submitted for analysis. The first measures 2.3mm x 0.96mm, and the 2nd measures 1.6mm x 0.83mm with a thickness of 0.19mm. The particles were digested and analyzed by ICP Spectroscopy. The most likely alloy matches are Precipitation Hardening Steel (AMS 6415) and Low Alloy Steel (AISI 4340).