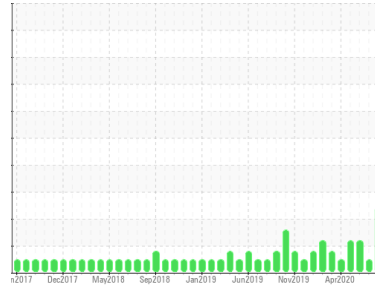




# PROBLEM SUMMARY

Sample Rating Trend



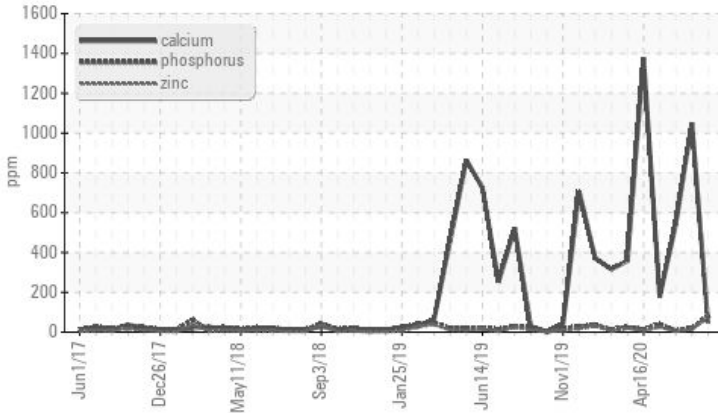
## VISCOSITY



Area  
**Turret [71134735]**  
 Machine Id  
**Turret Swivel #6 - 10" Firewater Grease Sample (S/N Sample Tag: NC-71601)**  
 Component  
**Grease**  
 Fluid  
**PETRO CANADA GREASE OG-1 (--- GAL)**

## COMPONENT CONDITION SUMMARY

### ▲ Additives



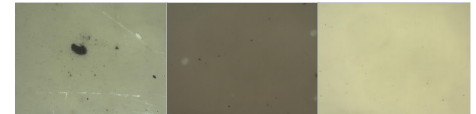
## RECOMMENDATION

Confirm the source of the grease being utilized for re-greasing. Advise schedule the grease for change. Resample at the next service interval to monitor.

## PROBLEMATIC TEST RESULTS

Sample Status				ABNORMAL	NORMAL	ATTENTION
Boron	ppm	ASTM D5185(m)		▲ 1	59	▲ 19
Phosphorus	ppm	ASTM D5185(m)		▲ 78	20	7
Zinc	ppm	ASTM D5185(m)		▲ 82	13	3
Calcium	ppm	ASTM D5185(m)		▲ 48	1050	▲ 543
NLGI Consistency	NLGI Scale	SKF Method	1	▲ 3-4	1	0-1

PrtFilter



Customer Id: CUSANY  
 Sample No.: WC1234567  
 Lab Number: 01234567  
 Test Package: GRS 1



To manage this report scan the QR code

To discuss the diagnosis or test data:  
 Bill Quesnel CLS,OMA II,MLA-III,LLA-I +1  
 (905)569-8600 x4641  
[Bill.Quesnel@wearcheck.com](mailto:Bill.Quesnel@wearcheck.com)

To change component or sample information:  
 Gloria Gonzalez +1 (905)569-8600 x4643  
[gloria.gonzalez@wearcheck.com](mailto:gloria.gonzalez@wearcheck.com)

## RECOMMENDED ACTIONS

Action	Status	Date	Done By	Description
Check Fluid Source	---	---	?	Confirm the source of the lubricant being utilized for top-up/fill.

## HISTORICAL DIAGNOSIS

17 Aug 2020 Diag: Bill Quesnel

NORMAL



Resample at the next service interval to monitor. All component wear rates are normal. There is no indication of any contamination in the grease. The condition of the grease is acceptable for the time in service.

view report



26 Jun 2020 Diag: Bill Quesnel

ADDITIVES



Confirm the source of the lubricant being utilized for re-greasing. Resample at the next service interval to monitor. All component wear rates are normal. There is no indication of any contamination in the grease. Additive levels indicate the addition of a different brand, or type of grease. The condition of the grease is acceptable for the time in service.

view report



18 May 2020 Diag: Bill Quesnel

ADDITIVES



Confirm the source of the lubricant being utilized for re-greasing. Resample at the next service interval to monitor. All component wear rates are normal. There is no indication of any contamination in the grease. Additive levels indicate the addition of a different brand, or type of grease. The condition of the grease is acceptable for the time in service.

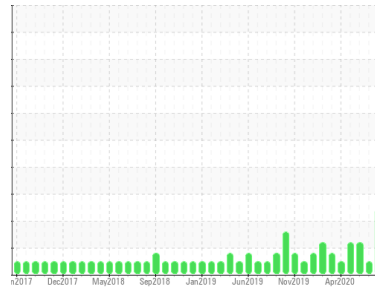
view report





# GREASE ANALYSIS

Sample Rating Trend



## VISCOSITY



Area

**Turret [71134735]**

Machine Id

**Turret Swivel #6 - 10" Firewater Grease Sample (S/N Sample Tag: NC-71601)**

Component

**Grease**

Fluid

**PETRO CANADA GREASE OG-1 (--- GAL)**

### DIAGNOSIS

#### Recommendation

Confirm the source of the grease being utilized for re-greasing. Advise schedule the grease for change. Resample at the next service interval to monitor.

#### Wear

All component wear rates are normal.

#### Contaminants

There is no indication of any contamination in the grease.

#### Grease Condition

Additive levels indicate the addition of a different brand, or type of grease. The consistency has increased from NLGI 1 to 3.5.

### SAMPLE INFORMATION

method	limit/base	current	history 1	history 2
Sample Number		<b>PC</b>	PC	PC
Sample Date		<b>17 Sep 2020</b>	17 Aug 2020	26 Jun 2020
Machine Age	hrs	<b>0</b>	0	0
Grease Age	hrs	<b>0</b>	0	0
Grease Serviced		<b>N/A</b>	N/A	N/A
Sample Status		<b>ABNORMAL</b>	NORMAL	ATTENTION

### WEAR METALS

method	limit/base	current	history 1	history 2		
PQ	In-house	>200	<b>160</b>	0	0	
Iron	ppm	ASTM D5185(m)	>250	<b>11</b>	6	3
Chromium	ppm	ASTM D5185(m)	>10	<b>&lt;1</b>	<1	<1
Nickel	ppm	ASTM D5185(m)	>5	<b>&lt;1</b>	1	<1
Cadmium	ppm	ASTM D5185(m)		<b>0</b>	0	0
Titanium	ppm	ASTM D5185(m)		<b>0</b>	<1	0
Vanadium	ppm	ASTM D5185(m)		<b>0</b>	0	0
Lead	ppm	ASTM D5185(m)	>25	<b>0</b>	0	0
Copper	ppm	ASTM D5185(m)	>75	<b>&lt;1</b>	2	<1
Tin	ppm	ASTM D5185(m)	>5	<b>0</b>	0	0
Silver	ppm	ASTM D5185(m)	>5	<b>&lt;1</b>	<1	<1

### ADDITIVES

method	limit/base	current	history 1	history 2		
Boron	ppm	ASTM D5185(m)		<b>▲ 1</b>	59	<b>▲ 19</b>
Magnesium	ppm	ASTM D5185(m)		<b>&lt;1</b>	4	2
Manganese	ppm	ASTM D5185(m)		<b>&lt;1</b>	<1	<1
Molybdenum	ppm	ASTM D5185(m)		<b>2</b>	<1	<1
Phosphorus	ppm	ASTM D5185(m)		<b>▲ 78</b>	20	7
Zinc	ppm	ASTM D5185(m)		<b>▲ 82</b>	13	3
Antimony	ppm	ASTM D5185(m)		<b>75</b>	3	<1

### THICKENER/SOAP

method	limit/base	current	history 1	history 2		
Aluminum	ppm	ASTM D5185(m)		<b>0</b>	<1	<1
Barium	ppm	ASTM D5185(m)		<b>1</b>	<1	0
Calcium	ppm	ASTM D5185(m)		<b>▲ 48</b>	1050	<b>▲ 543</b>
Sodium	ppm	ASTM D5185(m)		<b>7</b>	10	0
Lithium	ppm	ASTM D5185(m)		<b>238</b>	94	25
Sulfur	ppm	ASTM D5185(m)		<b>738</b>	546	<b>▲ 244</b>

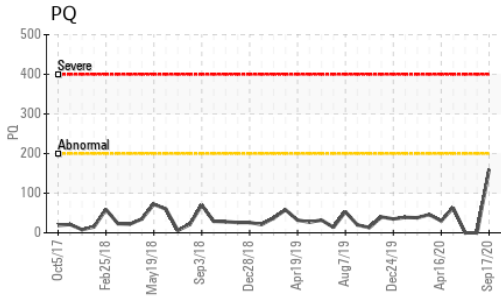
### CONTAMINANTS

method	limit/base	current	history 1	history 2		
Silicon	ppm	ASTM D5185(m)	>150	<b>&lt;1</b>	2	<1
Potassium	ppm	ASTM D5185(m)		<b>1</b>	1	<1

### GREASE CONDITION

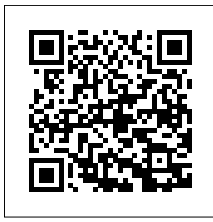
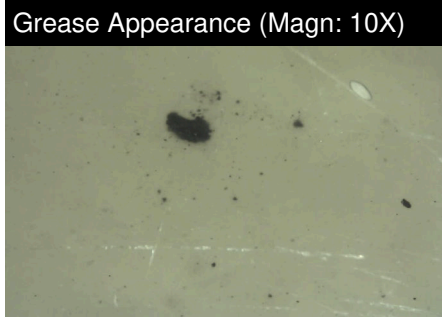
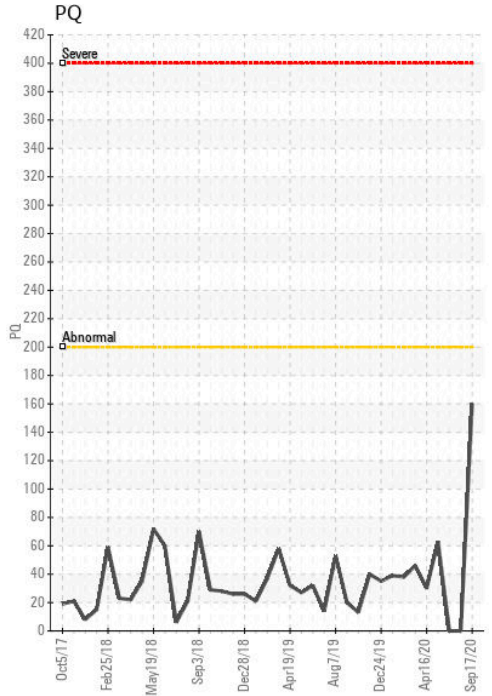
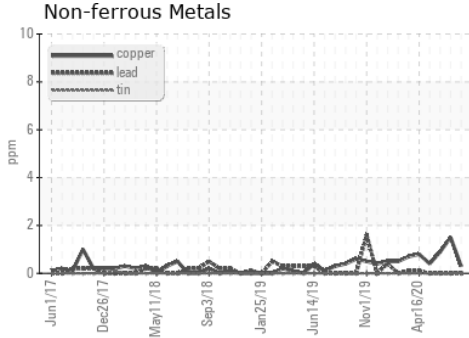
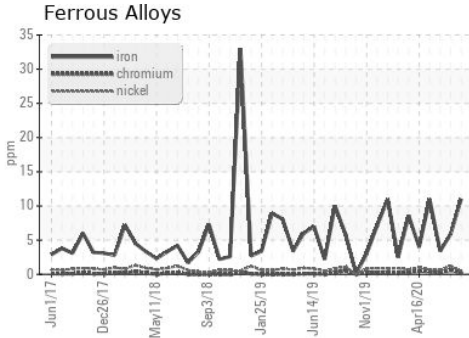
method	limit/base	current	history 1	history 2		
Grease Color	Visual	Tan	<b>Tan</b>	Tan	Yellow	
Texture	In-house	Buttery	<b>Long fiber</b>	Short fiber	Long fiber	
NLGI Consistency	NLGI Scale	SKF Method	1	<b>▲ 3-4</b>	1	0-1

# GREASE ANALYSIS



SAMPLE IMAGES	method	limit/base	current	history 1	history 2
Color					
Bottom					
PrtFilter					

## GRAPHS



**Laboratory** : WearCheck - C8-1175 Appleby Line, Burlington, ON L7L 5H9  
**Sample No.** : WC1234567      **Received** : 23 Sep 2020  
**Lab Number** : 01234567      **Diagnosed** : 29 Sep 2020  
**Unique Number** : 12345678      **Diagnostician** : Bill Quesnel  
**Test Package** : GRS 1 ( Additional Tests: BottomAnalysis )  
*To discuss this sample report, contact Customer Service at 1-800-268-2131.*  
*(m) Denotes a modified test method, (e) Denotes a test conducted using an external laboratory.*

**Cusany Logistics Inc.**  
 1212 Industrial Place  
 Centerville, OH  
 USA 75900  
 Contact: Jim Leduc  
 jim.leduc@cusanylogisticsinc.com  
 T: (305)555-1212  
 F: (305)555-1222