



GREASE ANALYSIS

WEAR	NORMAL
GREASE CONDITION	NORMAL
CONTAMINANTS	NORMAL

Machine Id
WEC30-300970 NDE EBRL NO. 1034MC3 BRG GREASE (S/N 4648278)

Component
ABB AM1630L4ABAFTH Non-Drive End Grease

Fluid
KLUBERPLEX BEM 41-132 (55 GAL)

RECOMMENDATION

Resample at the next service interval to monitor.

Test	UOM	Method	Limit/Abn	Current	History1	History2
Sample Number				WC981218	---	---
Sample Date				21 Jul 2017	---	---
Machine Age	hrs			5682	---	---
Grease Age	hrs			0	---	---
Grease Serviced				N/A	---	---
Sample Status				NORMAL	---	---

WEAR

All component wear rates are normal. The direct-reading & analytical ferrographic results are normal indicating no abnormal wear in the system.

Test	UOM	Method	Limit/Abn	Current	History1	History2
PQ		In-house	>200	223	---	---
Iron	ppm	ASTM D5185	>250	52	---	---
Chromium	ppm	ASTM D5185	>10	0.7	---	---
Nickel	ppm	ASTM D5185	>5	0.0	---	---
Titanium	ppm	ASTM D5185		0.0	---	---
Vanadium	ppm	ASTM D5185		0.0	---	---
Lead	ppm	ASTM D5185	>25	1.2	---	---
Copper	ppm	ASTM D5185	>75	3.2	---	---
Tin	ppm	ASTM D5185	>5	0.0	---	---
Silver	ppm	ASTM D5185	>5	0.0	---	---
Ferrous Rubbing	Scale 0-10	ASTM D7684		3		
Ferrous Sliding	Scale 0-10	ASTM D7684				
Ferrous Cutting	Scale 0-10	ASTM D7684				
Ferrous Rolling	Scale 0-10	ASTM D7684		2		
Ferrous Break-in	Scale 0-10	ASTM D7684				
Ferrous Spheres	Scale 0-10	ASTM D7684				
Ferrous Black Oxides	Scale 0-10	ASTM D7684				
Ferrous Red Oxides	Scale 0-10	ASTM D7684				
Ferrous Corrosive	Scale 0-10	ASTM D7684		1		
Ferrous Other	Scale 0-10	ASTM D7684				
Nonferrous Rubbing	Scale 0-10	ASTM D7684				
Nonferrous Sliding	Scale 0-10	ASTM D7684				
Nonferrous Cutting	Scale 0-10	ASTM D7684				
Nonferrous Rolling	Scale 0-10	ASTM D7684				
Nonferrous Other	Scale 0-10	ASTM D7684				
Carbonaceous Material	Scale 0-10	ASTM D7684				
Sand/Dirt	Scale 0-10	ASTM D7684		2		
Fibres	Scale 0-10	ASTM D7684				
Spheres	Scale 0-10	ASTM D7684				
Other	Scale 0-10	ASTM D7684				

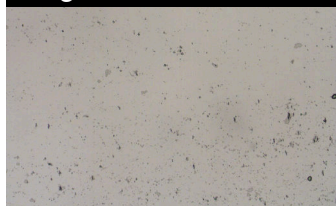
Magn: 200x Illum: BC



Magn: 50x Illum: RW



Magn: 100x Illum: RW



GREASE CONDITION

Linear Sweep Voltammetry (RULER – ASTM D6971) testing indicates normal levels of anti-oxidants present in the oil. The condition of the grease is acceptable for the time in service.

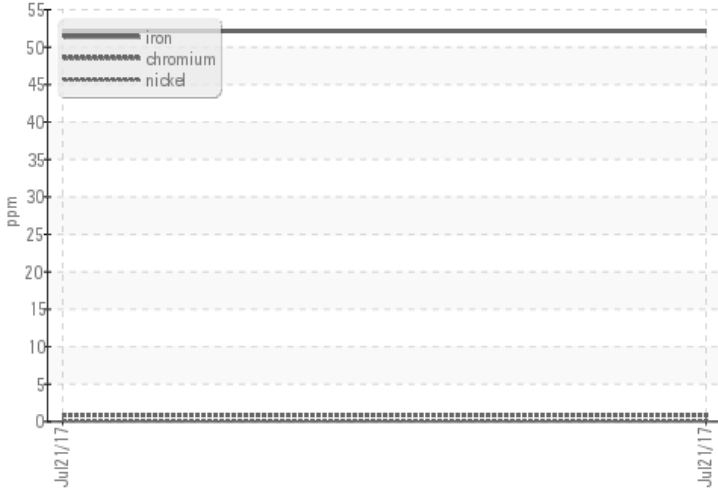
Boron	ppm	ASTM D5185	0	0.1	---	---
Magnesium	ppm	ASTM D5185	0	0.0	---	---
Manganese	ppm	ASTM D5185	0	0.2	---	---
Molybdenum	ppm	ASTM D5185	400	624	---	---
Phosphorus	ppm	ASTM D5185	120	128	---	---
Zinc	ppm	ASTM D5185	0	5.3	---	---
Aluminum	ppm	ASTM D5185	0	4.0	---	---
Barium	ppm	ASTM D5185	0	0.1	---	---
Calcium	ppm	ASTM D5185	0	6.1	---	---
Sodium	ppm	ASTM D5185	5	9.9	---	---
Sulfur	ppm	ASTM D5185	850	1003	---	---
Grease Color		Visual	Yellow	Tan	---	---
Oil Separation (Bleed)	%	SKF Method	>+/-25%	-7.7	---	---
Anti-Oxidant 1	%	ASTM D6971	<25%	91	---	---
Anti-Oxidant 2	%	ASTM D6971	<25%	101	---	---

CONTAMINANTS

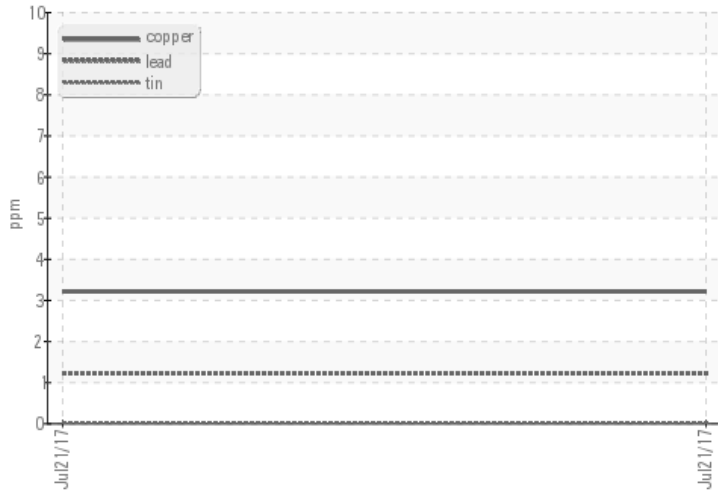
There is no indication of any contamination in the grease.

Silicon	ppm	ASTM D5185	>150	5.5	---	---
Potassium	ppm	ASTM D5185		0.0	---	---
Water	%	ASTM D6304	>0.1	0.048	---	---
ppm Water	ppm	ASTM D6304	>1000	482.1	---	---

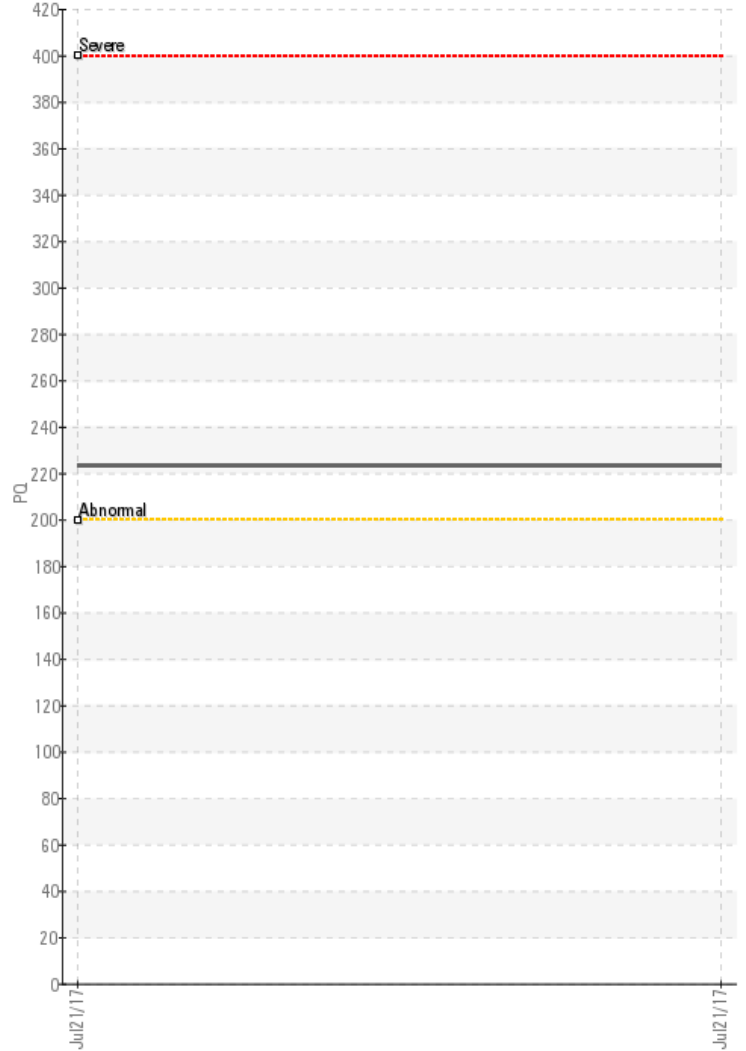
Ferrous Alloys



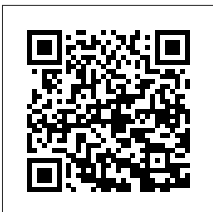
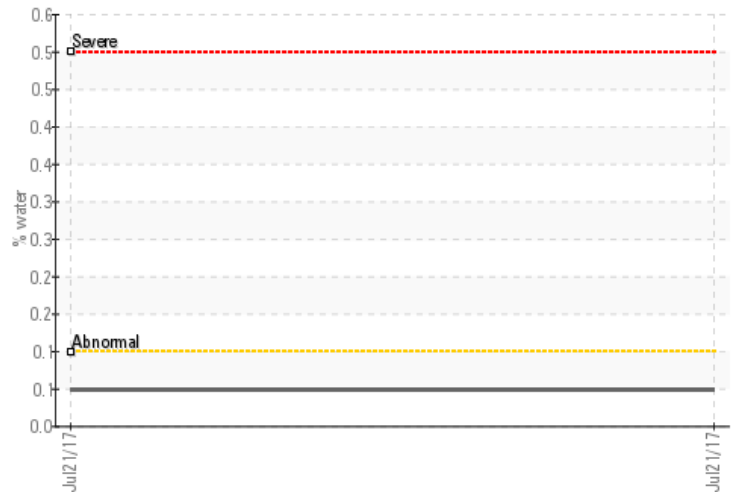
Babbitts



PQ



Water



Laboratory : WearCheck - C8-1175 Appleby Line, Burlington, ON L7L 5H9
Sample No. : WC1234567 **Received** : 18 Aug 2017
Lab Number : 01234567 **Diagnosed** : 19 Sep 2017
Unique Number : 12345678 **Diagnostician** : Bill Quesnel
Test Package : GRS 3 (Additional Tests: BottomAnalysis, IPI, TBN)

Cusany Logistics Inc.
 1212 Industrial Place
 Centerville, OH
 USA 75900
 Contact: Jim Leduc
 jim.leduc@cusanylogisticsinc.com
 T: (305)555-1212
 F: (305)555-1222

To discuss diagnosis or test data, contact Technical Support at 1-800-268-2131.
 To change component or sample information, contact Customer Service at 1-800-268-2131.

This page left intentionally blank