



# COOLANT REPORT

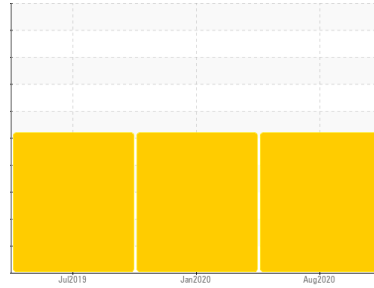
Sample Rating Trend

OFF SPEC



Machine Id  
**CAHE-V411201C**

Component  
**Coolant**  
Fluid  
**HYBRID (HOAT) COOLANT (--- GAL)**



## DIAGNOSIS

### Recommendation

We recommend that you perform a partial drain and top off with straight antifreeze to increase level of glycol. Recommend that you ensure the same technology coolant is being used for make-up. Resample at the next service interval to monitor.

### Corrosion

All metal levels are normal indicating no corrosion in the cooling system.

### Contaminants

There is no indication of any contamination in the coolant.

### Coolant Condition

The glycol level is low which leads to an increased rate of liner pitting and may be inadequate for freeze protection. The specific gravity is lower than typical indicating the addition of a different type of coolant. The pH level of this fluid is within the acceptable limits. The reserve alkalinity of this fluid is acceptable.

## SAMPLE INFORMATION

	method	limit/base	current	history 1	history 2
Sample Number			<b>PP13465399</b>	PP	PP
Sample Date			<b>08 Aug 2020</b>	20 Jan 2020	01 Jul 2019
Machine Age	hrs		<b>0</b>	0	0
Sample Status			<b>SEVERE</b>	SEVERE	SEVERE

## PHYSICAL TEST RESULTS

	method	limit/base	current	history 1	history 2
Specific Gravity	ASTM D1298		<b>▲ 1.043</b>	▲ 1.043	▲ 1.042
pH	Scale 0-14 ASTM D1287		<b>8.37</b>	8.17	8.08
Nitrites	ppm Alcan Test Kit		<b>280</b>	520	280
Reserve Alkalinity	Scale 0-20 ASMT D1121		<b>5.2</b>	4.7	4.8
Percentage Glycol	% ASTM D3321		<b>● 32.0</b>	● 32.0	● 31.0
Freezing Point	°C ASTM D3321		<b>● -17</b>	● -17	● -16
Carboxylate			---	---	---

## CORROSION INHIBITORS

	method	limit/base	current	history 1	history 2
Silicon	ppm ASTM D5185(m)		<b>44</b>	57	59
Phosphorus	ppm ASTM D5185(m)		<b>24</b>	35	67
Boron	ppm ASTM D5185(m)		<b>575</b>	518	525
Molybdenum	ppm ASTM D5185(m)		<b>&lt;1</b>	<1	<1

## CORROSION

	method	limit/base	current	history 1	history 2
Iron	ppm ASTM D5185(m)	>15	<b>1</b>	1	<1
Aluminum	ppm ASTM D5185(m)	>10	<b>&lt;1</b>	<1	<1
Copper	ppm ASTM D5185(m)	>10	<b>&lt;1</b>	<1	<1
Lead	ppm ASTM D5185(m)	>10	<b>1</b>	<1	<1
Tin	ppm ASTM D5185(m)	>10	<b>&lt;1</b>	<1	0
Silver	ppm ASTM D5185(m)	>10	<b>&lt;1</b>	1	0
Zinc	ppm ASTM D5185(m)		<b>&lt;1</b>	0	<1

## CARRIER SALTS

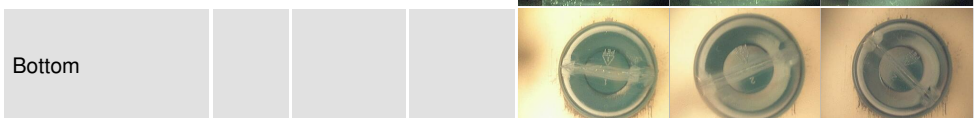
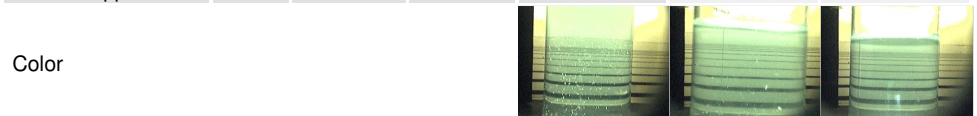
	method	limit/base	current	history 1	history 2
Sodium	ppm ASTM D5185(m)		<b>1391</b>	1272	1331
Potassium	ppm ASTM D5185(m)		<b>2394</b>	2005	2136

## SCALE PONTENTIAL

	method	limit/base	current	history 1	history 2
Calcium	ppm ASTM D5185(m)		<b>3</b>	8	4
Magnesium	ppm ASTM D5185(m)		<b>2</b>	2	2

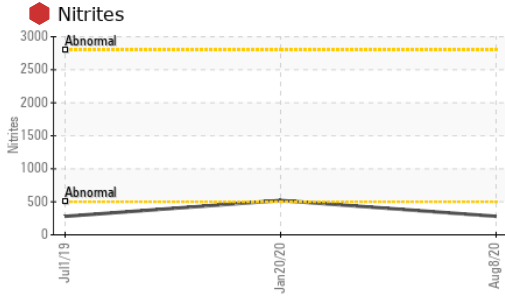
## VISUAL

	method	limit/base	current	history 1	history 2
Coolant Color	Visual		<b>Green</b>	Green	Blue
Coolant Appearance	Visual	Clear	<b>Clear</b>	Clear	Clear

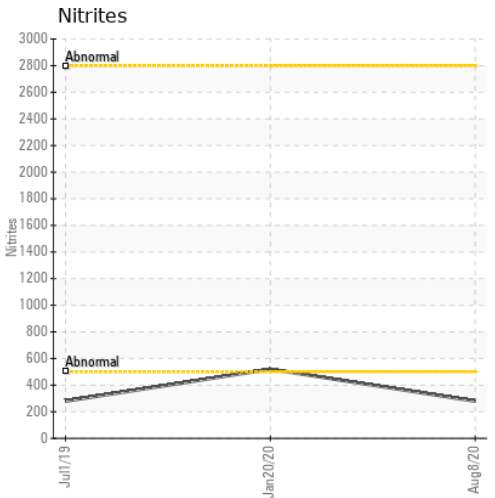
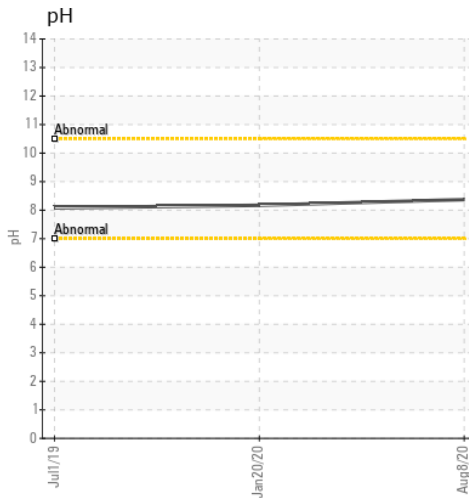
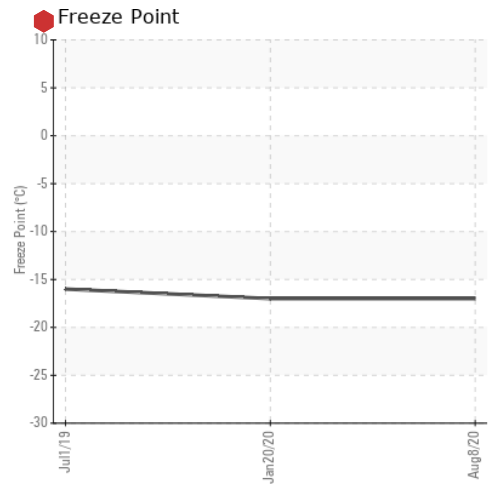
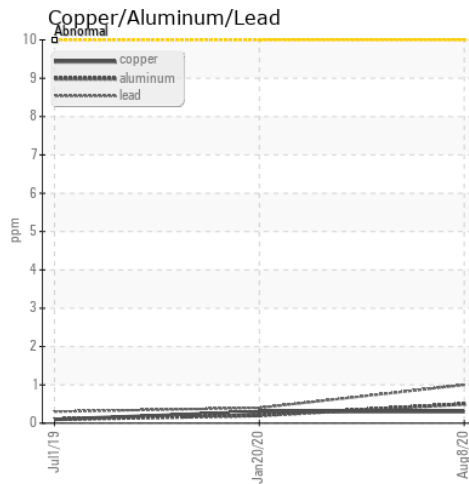
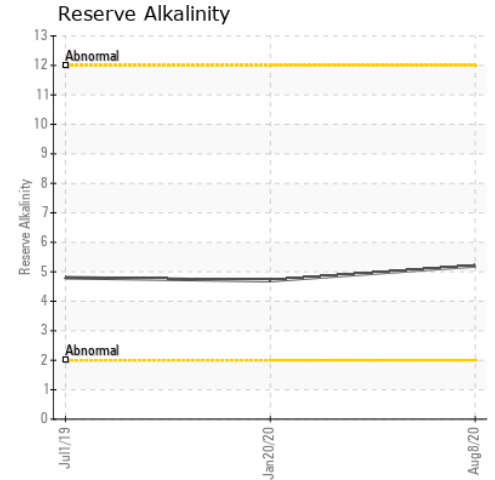
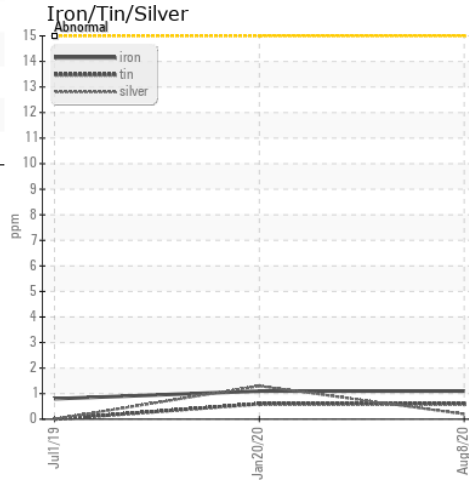




# COOLANT REPORT



## GRAPHS



**Laboratory** : WearCheck - C8-1175 Appleby Line, Burlington, ON L7L 5H9  
**Sample No.** : WC1234567 **Received** : 10 Sep 2020  
**Lab Number** : 01234567 **Diagnosed** : 11 Sep 2020  
**Unique Number** : 12345678 **Diagnostician** : Kevin Marson  
**Test Package** : COOL

To discuss this sample report, contact Customer Service at 1-800-268-2131.  
 (m) Denotes a modified test method, (e) Denotes a test conducted using an external laboratory.

**Cusany Logistics Inc.**  
 1212 Industrial Place  
 Centerville, OH  
 USA 75900  
 Contact: Jim Leduc  
 jim.leduc@cusanylogisticsinc.com  
 T: (305)555-1212  
 F: (305)555-1222