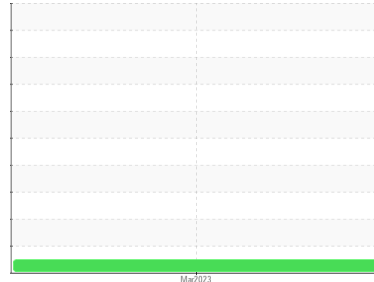


Machine Id
111447
 Component
Diesel Fuel
 Fluid
DIESEL FUEL No. 2 (--- GAL)



DIAGNOSIS

Recommendation
 Resample at the next service interval to monitor.

Corrosion
 {not applicable}

Contaminants
 There is no indication of any contamination in the fuel.

Fuel Condition
 All laboratory tests indicate that this sample meets specifications for No.2 ultra-low-sulfur diesel fuel (US EPA/CGSB-3.517-3 type B).

SAMPLE INFORMATION		method	limit/base	current	history 1	history 2
Sample Number	Client Info			LH0104801	---	---
Sample Date	Client Info			16 Mar 2023	---	---
Machine Age	hrs	Client Info		355	---	---
Sample Status				NORMAL	---	---

PHYSICAL PROPERTIES		method	limit/base	current	history 1	history 2
Visc @ 40°C	cSt	ASTM D7279(m)	4.1	2.1	---	---
Pensky-Martens Flash Point	°C	ASTM D93	40	51	---	---

SULFUR CONTENT		method	limit/base	current	history 1	history 2
Sulfur	ppm	ASTM D5185(m)		6	---	---

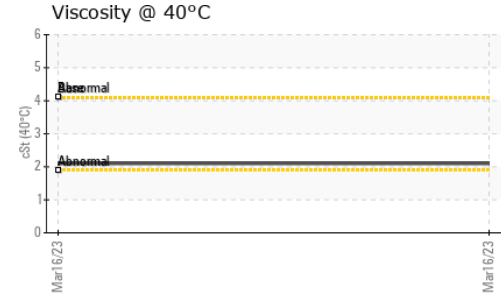
DISTILLATION		method	limit/base	current	history 1	history 2
Initial Boiling Point	°C	ASTM D2887	174	160	---	---
5% Distillation Point	°C	ASTM D2887		178	---	---
10% Distill Point	°C	ASTM D2887	186	185	---	---
15% Distillation Point	°C	ASTM D2887		192	---	---
20% Distill Point	°C	ASTM D2887	206	199	---	---
30% Distill Point	°C	ASTM D2887	226	212	---	---
40% Distill Point	°C	ASTM D2887	245	226	---	---
50% Distill Point	°C	ASTM D2887	260	240	---	---
60% Distill Point	°C	ASTM D2887	272	256	---	---
70% Distill Point	°C	ASTM D2887	285	271	---	---
80% Distill Point	°C	ASTM D2887	315	289	---	---
85% Distillation Point	°C	ASTM D2887		301	---	---
90% Distill Point	°C	ASTM D2887	360	313	---	---
95% Distillation Point	°C	ASTM D2887		331	---	---
Final Boiling Point	°C	ASTM D2887	>360	350	---	---

IGNITION QUALITY		method	limit/base	current	history 1	history 2
Cetane Value		ASTM D4737	<40.0	45	---	---

CONTAMINANTS		method	limit/base	current	history 1	history 2
Silicon	ppm	ASTM D5185(m)	<1.0	0	---	---
Sodium	ppm	ASTM D5185(m)	<0.1	<1	---	---
Potassium	ppm	ASTM D5185(m)	<0.1	0	---	---

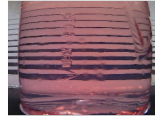
HEAVY METALS		method	limit/base	current	history 1	history 2
Aluminum	ppm	ASTM D5185(m)	<0.1	0	---	---
Nickel	ppm	ASTM D5185(m)	<0.1	0	---	---
Lead	ppm	ASTM D5185(m)	<0.1	0	---	---
Vanadium	ppm	ASTM D5185(m)	<0.1	0	---	---
Iron	ppm	ASTM D5185(m)	<0.1	<1	---	---
Calcium	ppm	ASTM D5185(m)	<0.1	<1	---	---
Magnesium	ppm	ASTM D5185(m)	<0.1	<1	---	---
Phosphorus	ppm	ASTM D5185(m)	<0.1	<1	---	---
Zinc	ppm	ASTM D5185(m)	<0.1	<1	---	---

FUEL REPORT



SAMPLE IMAGES method limit/base current history 1 history 2

Color



no image

no image

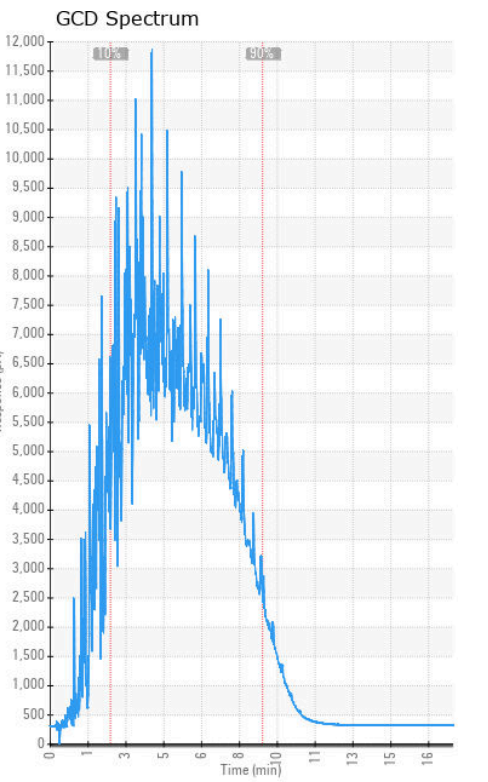
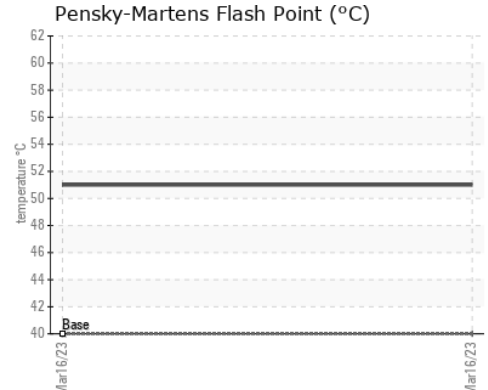
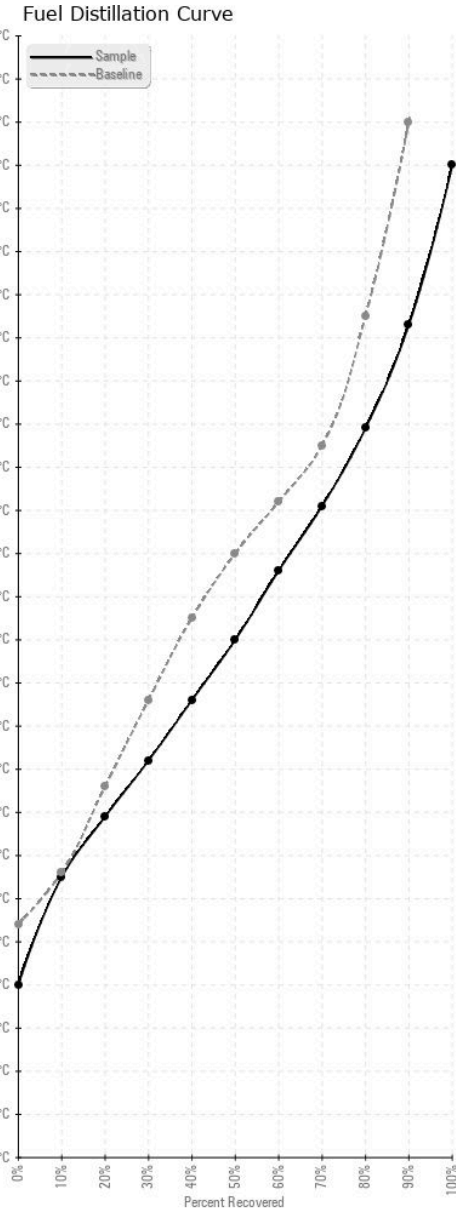
Bottom



no image

no image

GRAPHS



Laboratory : WearCheck - C8-1175 Appleby Line, Burlington, ON L7L 5H9
Sample No. : WC1234567 **Received** : 22 Mar 2023
Lab Number : 01234567 **Diagnosed** : 22 Mar 2023
Unique Number : 12345678 **Diagnostician** : Bill Quesnel
Test Package : TEST (Additional Tests: API, CC FLASH, Cetane, Fuel, GC-PercFuel, GCD, ICP, KV40, Spat, SpecGravity
To discuss this sample report, contact Customer Service at 1-800-268-2131.
(m) Denotes a modified test method, (e) Denotes a test conducted using an external laboratory.
Validity of results and interpretation are based on the sample and information as supplied.

Cusany Logistics Inc.
 1212 Industrial Place
 Centerville, OH
 USA 75900
 Contact: Jim Leduc
 jim.leduc@cusanylogisticsinc.com
 T: (305)555-1212
 F: (305)555-1222