

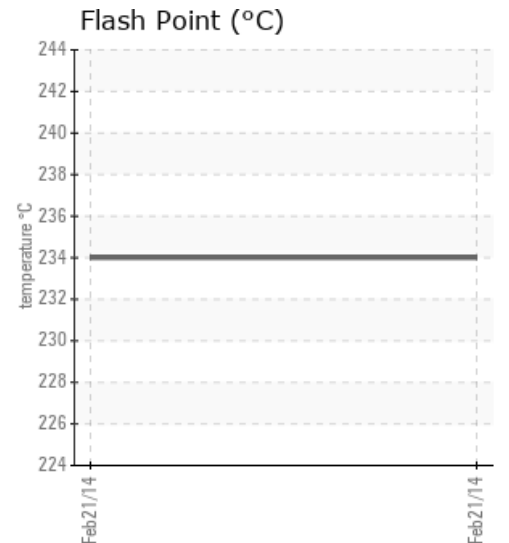
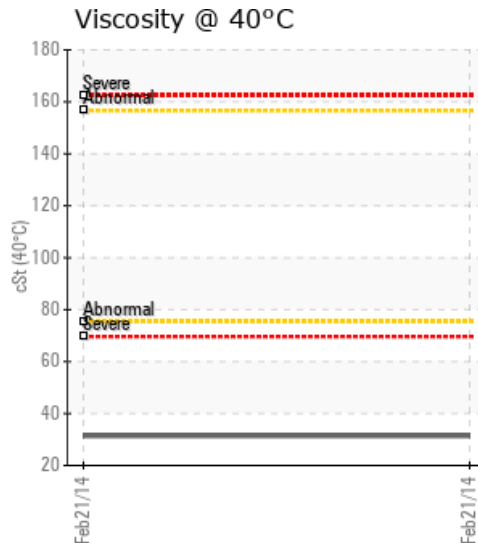
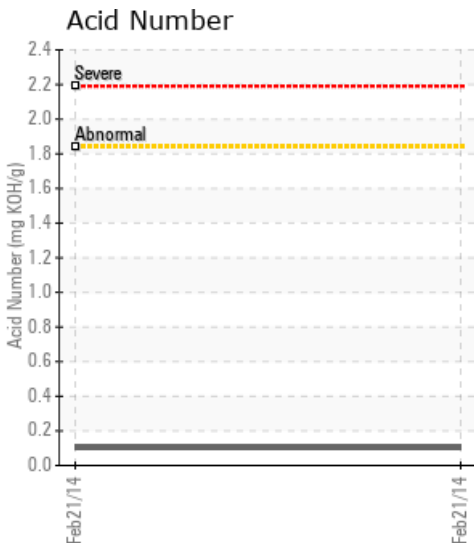
INLET END/SHAFT `A`

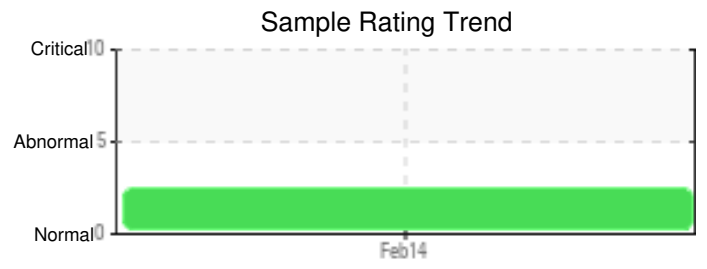
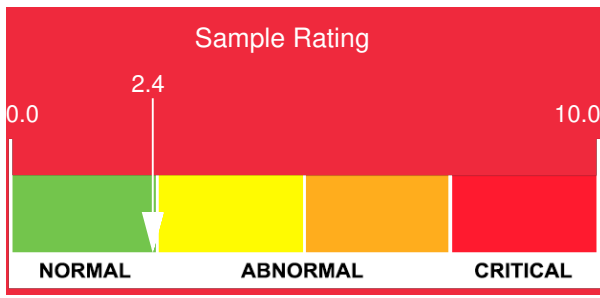
Customer: PTRHTF40110	System Information	Sample Information
Ayr Environmental Services Operatio... AESOPS WWTW - Meadowhead Rd Irvine Scotland, ZZ KA11 5AY UK Attn: Graham Hill Tel: 0(796)152-7969 E-Mail: graham.hill@scots-	System Volume: 20000 ltr Bulk Operating Temp: 536F / 280C Heating Source: Blanket: Fluid: N/A Make: BABCOCK WANSON	Lab No: 01903432 Analyst: Bill Quesnel CLS,OMA II,MLA-III,LLA-I Sample Date: 02/21/14 Received Date: 03/19/14 Completed: 04/10/18 To discuss this report contact Bill

Recommendation:

Comments:

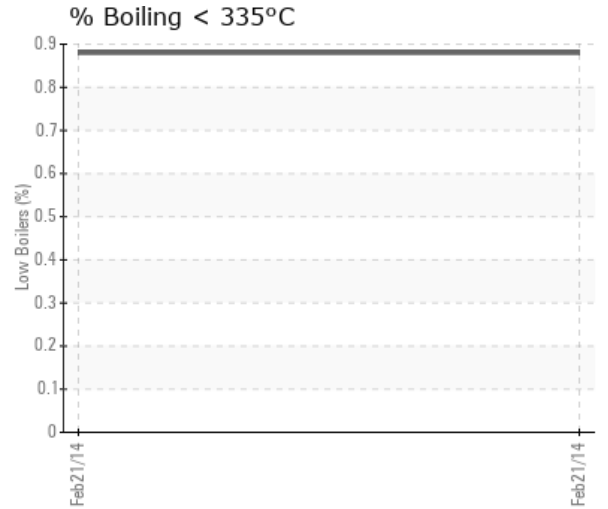
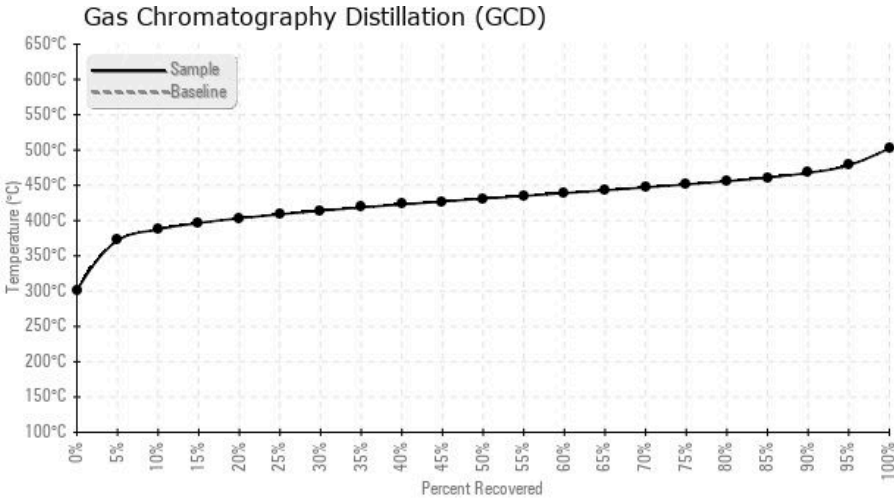
Sample Date	Received Date	Fluid Age	Sample Location	Flash Point (COC)	Water (KF)	Viscosity (40°C)	Acid Number	Solids	GCD 10%	GCD 50%	GCD 90%	GCD % < 335°C
	mm/dd/yy			°F/°C	ppm	cSt	mg/KOH/g	%wt	°F/°C	°F/°C	°F/°C	%
02/21/14	03/19/14	6y	INLET END/SHAFT A	453 / 234	55.0	31.4	0.102	0.155	730 / 388	808 / 431	874 / 468	0.88
Baseline Data				32 / 0								





Sample Date	Iron	Chromium	Nickel	Aluminum	Copper	Lead	Tin	Cadmium	Silver	Vanadium	Silicon	Sodium	Potassium	Titanium	Molybdenum	Antimony	Manganese	Lithium	Boron	Magnesium	Calcium	Barium	Phosphorus	Zinc
02/21/14	13	0	0	1	0	0	0	5	0	0	1	1	0	0	0	0	1	0	0	0	5	0	2	0
Baseline Data													0						0				0	

Elemental analysis results (above) in parts per million (ppm). [10,000 ppm = 1.0%]



Historical Comments

Petro-Canada makes no representation or warranty of any kind, either express or implied, as to the accuracy or completeness of the analysis and assumes no responsibility and shall have no liability whatsoever with respect to such analysis, or a party's use of it. Petro-Canada is a division of HollyFrontier Corporation.