

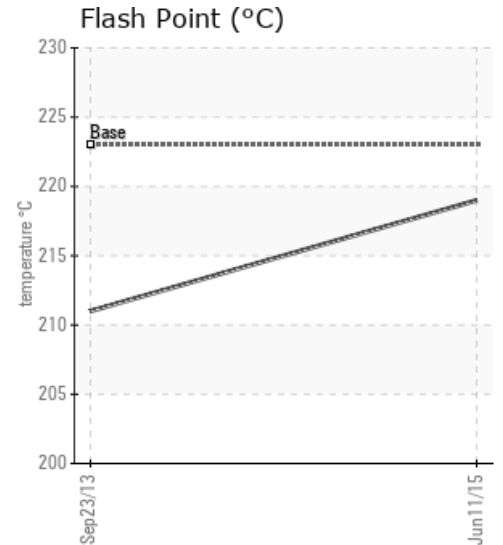
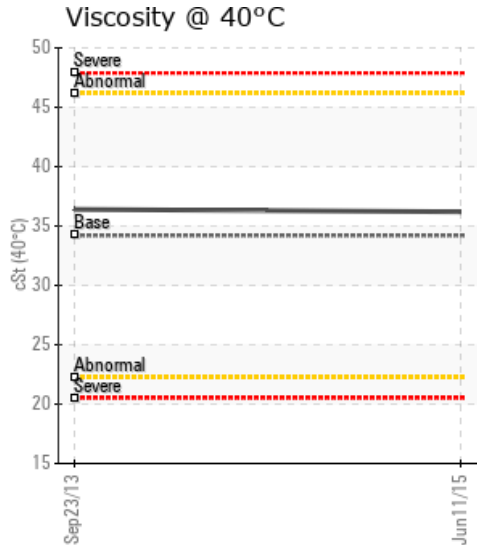
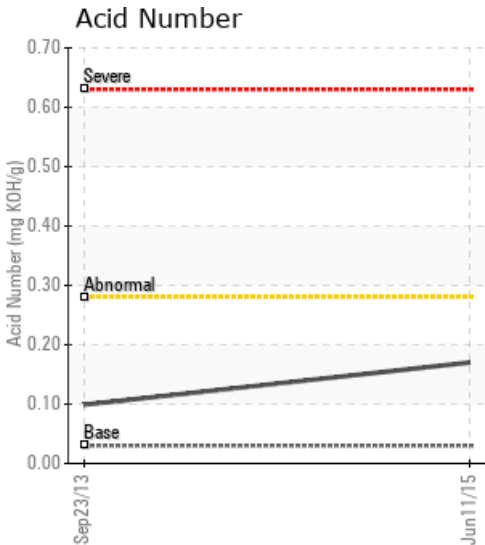
## RETURN LINE AFTER FILTER

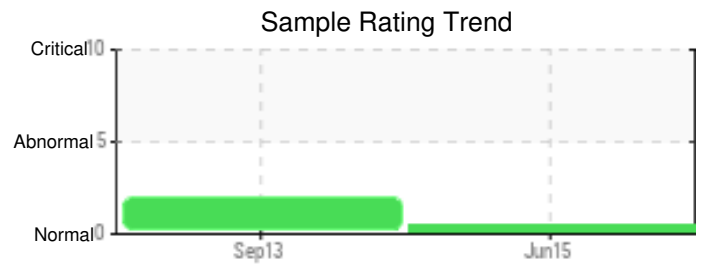
Customer: PTRHTF10019	System Information	Sample Information
LAKESIDE INDUSTRIES-PLANT 110 PLANT 110 - 4850 NW FRONT AVE PORTLAND, OR 97210 US Attn: PATRICK L. DUNIGAN Tel: (503)227-6136 E-Mail: pat.dunigan@lakesideindustries.com	System Volume: 409 gal Bulk Operating Temp: 385F / 196C Heating Source: Blanket: Fluid: PETRO CANADA PETRO-THERM Make: HWY HEAT	Lab No: 02005388 Analyst: Ron LeBlanc Sample Date: 06/11/15 Received Date: 07/02/15 Completed: 07/16/15 Ron LeBlanc Ronald.LeBlancSr@HFSinclair.com

Recommendation: (GCD) 90% Distillation Point is abnormally high. Viscosity is normal.

Comments: (GCD) 90% Distillation Point is abnormally high.

Sample Date	Received Date	Fluid Age	Sample Location	Flash Point (COC)	Water (KF)	Viscosity (40°C)	Acid Number	Solids	GCD 10%	GCD 50%	GCD 90%	GCD % < 335°C
	mm/dd/yy			°F/°C	ppm	cSt	mg/KOH/g	%wt	°F/°C	°F/°C	°F/°C	%
06/11/15	07/02/15	13.0y	RETURN LINE	426 / 219	28.6	36.2	0.17	0.055	717 / 381	818 / 437	935 / 502	1.26
09/23/13	10/10/13	11.8y		412 / 211	30.6	36.4	0.099	0.160	703 / 373	816 / 436	929 / 498	3.13
Baseline Data				433 / 223		34.2	0.03		720 / 382	817 / 436	900 / 482	1.00

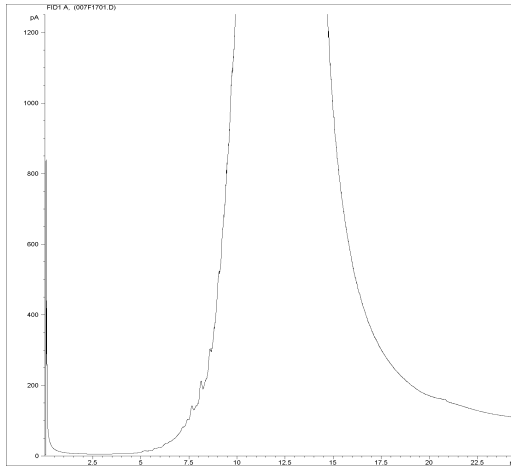




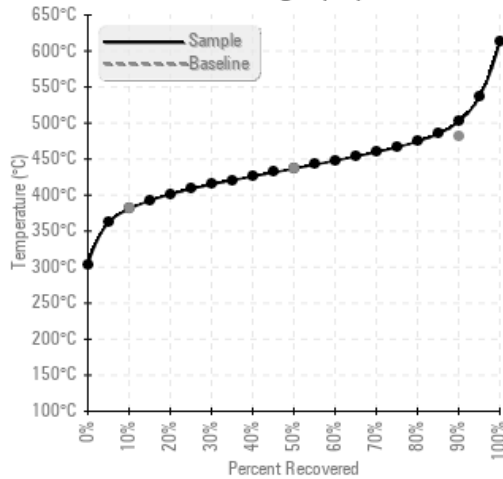
Sample Date	Iron	Chromium	Nickel	Aluminum	Copper	Lead	Tin	Cadmium	Silver	Vanadium	Silicon	Sodium	Potassium	Titanium	Molybdenum	Antimony	Manganese	Lithium	Boron	Magnesium	Calcium	Barium	Phosphorus	Zinc
06/11/15	0	0	0	0	0	0	0	0	0	0	0	0	0	0	0	0	0	0	0	0	0	0	0	0
09/23/13	0	0	0	0	2	0	0	0	0	0	1	0	0	0	0	0	0	0	0	0	0	0	0	0
Baseline Data			0	0						0		0	0					0				0		

Elemental analysis results (above) in parts per million (ppm). [10,000 ppm = 1.0%]

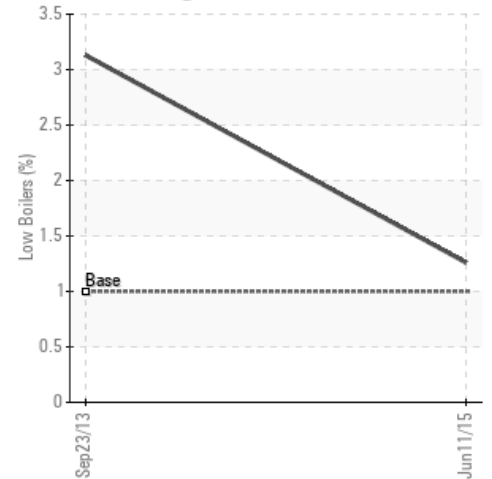
#### GCD Spectrum



#### Gas Chromatography Distillation



#### % Boiling < 335°C



### Historical Comments

09/23/13	The oil condition appears to be good at this time. Solids are low, elemental analysis looks good, water is low and viscosity and flash point are normal. Re-sample at least yearly to monitor the fluid condition. (GCD) 90% Distillation Point is severely high.

Petro-Canada makes no representation or warranty of any kind, either express or implied, as to the accuracy or completeness of the analysis and assumes no responsibility and shall have no liability whatsoever with respect to such analysis, or a party's use of it. Petro-Canada is a division of HollyFrontier Corporation.