

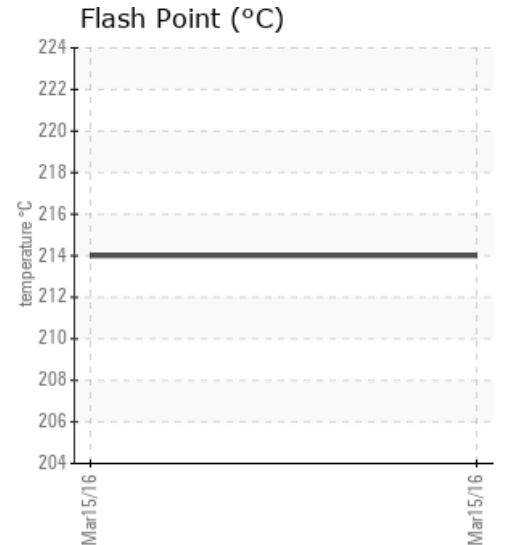
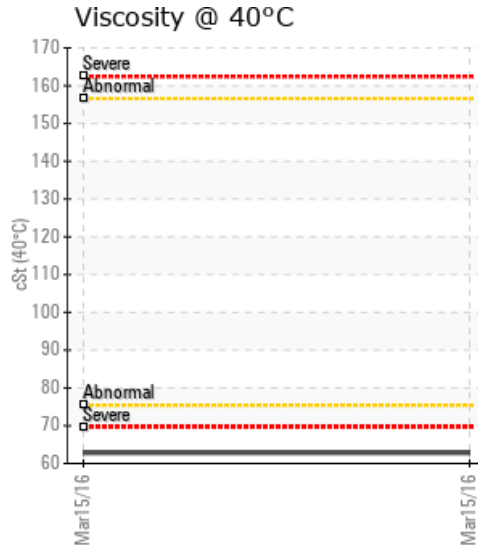
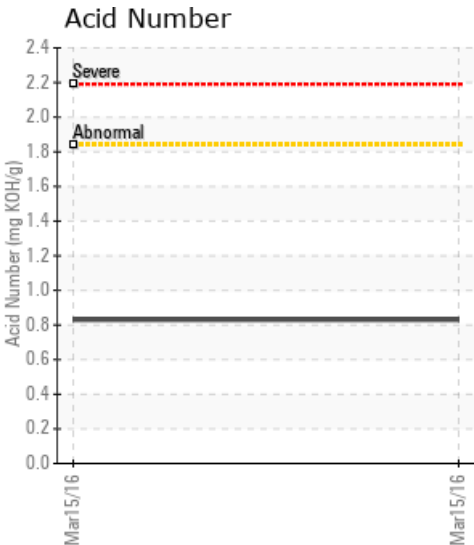
## ASPHALT PLANT HOT OIL #1

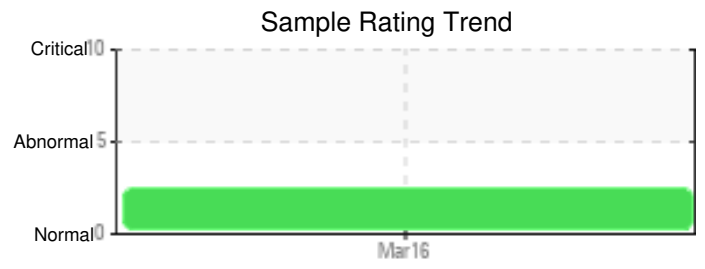
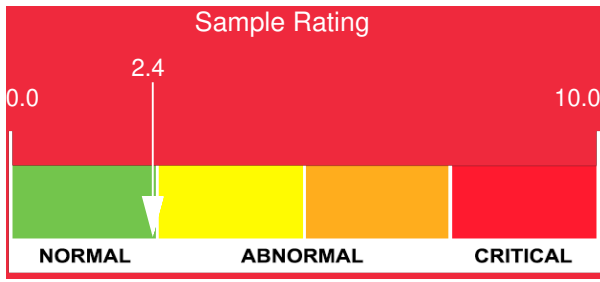
Customer: PTRHTF10022	System Information	Sample Information
LAKESIDE INDUSTRIES 11125 DURGIN RD S.E. OLYMPIA, WA 98513 US Attn: Herb Milleson Tel: (360)491-4690 E-Mail: hmilleson@lakesideind.net	System Volume: 440 gal Bulk Operating Temp: 380F / 193C Heating Source: Blanket: Fluid: N/A Make: GENCOR	Lab No: 02062018 Analyst: Ron LeBlanc Sample Date: 03/15/16 Received Date: 03/29/16 Completed: 04/01/16 Ron LeBlanc Ronald.LeBlancSr@HFSinclair.com

Recommendation: \*\*\* NOTE: Please specify the product on next sample \*\*\*Pentane is high. If this product is supposed to be Petro-Therm the viscosity at 40C is almost double. All other aspects of the fluid appear acceptable. Re-sample and provide product data.

Comments: Pentane Insolubles levels are severely high. Visc @ 40°C is severely low.

Sample Date	Received Date	Fluid Age	Sample Location	Flash Point (COC)	Water (KF)	Viscosity (40°C)	Acid Number	Solids	GCD 10%	GCD 50%	GCD 90%	GCD % < 335°C
	mm/dd/yy			°F/°C	ppm	cSt	mg/KOH/g	%wt	°F/°C	°F/°C	°F/°C	%
03/15/16	03/29/16	7.0y	AFTER HOT OIL PUMP	417 / 214	26.4	62.8	0.830	1.22	703 / 373	811 / 433	911 / 488	2.13
Baseline Data				32 / 0								

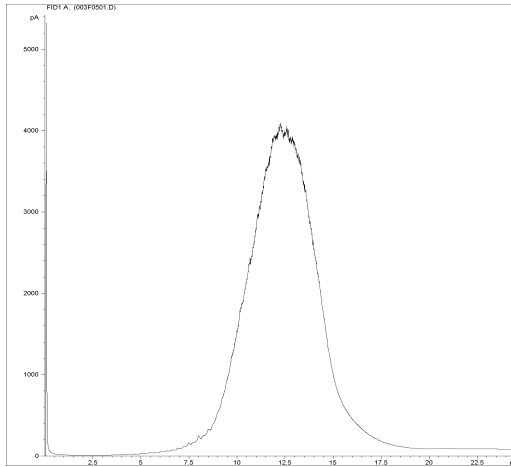




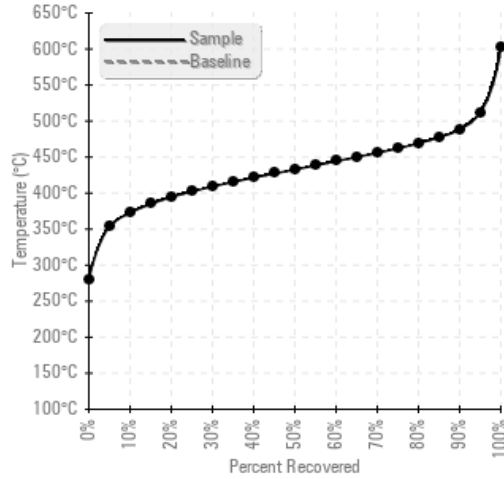
Sample Date	Iron	Chromium	Nickel	Aluminum	Copper	Lead	Tin	Cadmium	Silver	Vanadium	Silicon	Sodium	Potassium	Titanium	Molybdenum	Antimony	Manganese	Lithium	Boron	Magnesium	Calcium	Barium	Phosphorus	Zinc
03/15/16	18	0	0	0	0	0	0	0	0	0	2	0	0	0	0	0	0	0	0	0	0	0	0	0
Baseline Data													0						0				0	

Elemental analysis results (above) in parts per million (ppm). [10,000 ppm = 1.0%]

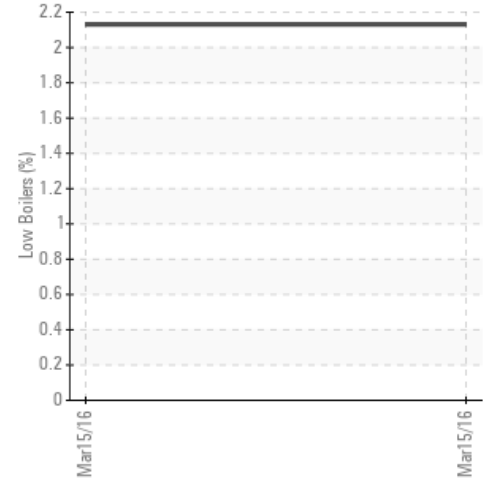
#### GCD Spectrum



#### Gas Chromatography Distillation



#### % Boiling < 335°C



#### Historical Comments


Petro-Canada makes no representation or warranty of any kind, either express or implied, as to the accuracy or completeness of the analysis and assumes no responsibility and shall have no liability whatsoever with respect to such analysis, or a party's use of it. Petro-Canada is a division of HollyFrontier Corporation.