

FT-0800-C

Customer: PTRHTF30024
 SOFINA FOODS
 3340 ORLANDO DRIVE
 MISSISSAUGA, ON L4V 1C7 CA
 Attn: Carlos Matos
 Tel: (905)293-7113
 E-Mail: cmatos@sofinafoods.com

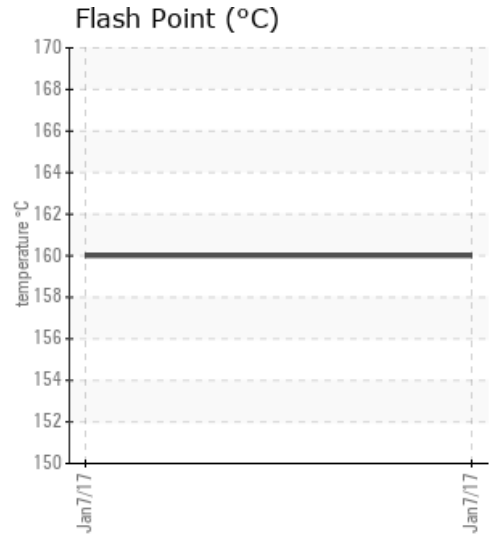
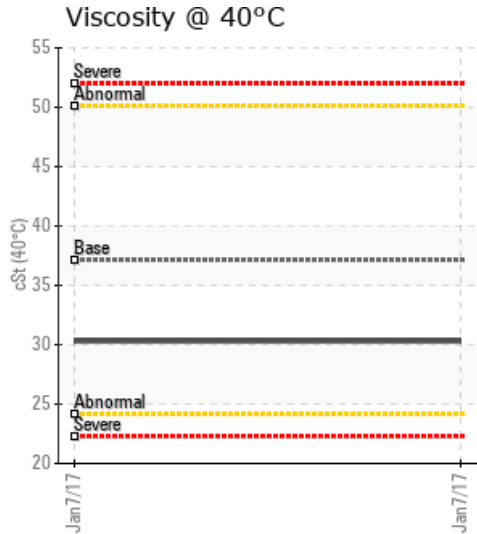
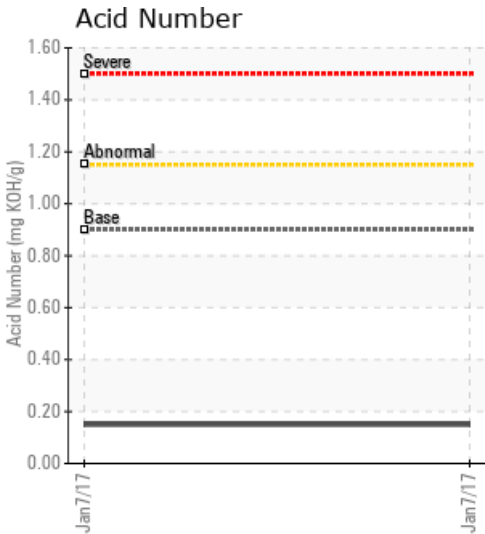
System Information
 System Volume: 2500 ltr
 Bulk Operating Temp: 600F / 316C
 Heating Source:
 Blanket:
 Fluid: PETRO CANADA PURITY FG HEAT TRANSFER FLUID
 Make: FULTON THERMAL CORP.

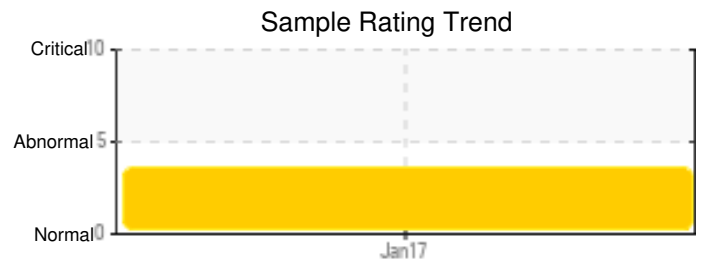
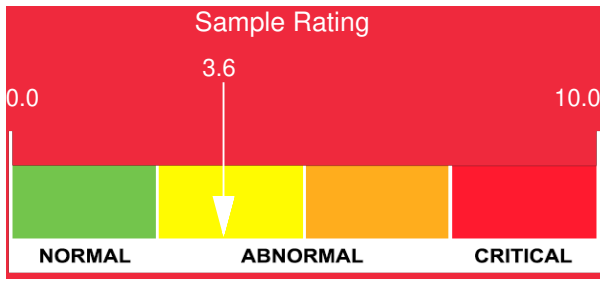
Sample Information
 Lab No: 02121059
 Analyst: Chris Armstrong
 Sample Date: 01/07/17
 Received Date: 01/11/17
 Completed: 01/13/17
 Chris Armstrong
 chris.armstrong@HFSinclair.com

Recommendation: Flash point is low indicating the presence of light ends and system should be vented in order to remove the light ends. The GCD @90% is high indicating some oxidation of the fluid. Re-test in 6 months time.

Comments: (GCD) 90% Distillation Point is severely high. COC Flash Point is severely low.

Sample Date	Received Date	Fluid Age	Sample Location	Flash Point (COC)	Water (KF)	Viscosity (40°C)	Acid Number	Solids	GCD 10%	GCD 50%	GCD 90%	GCD % < 335°C
	mm/dd/yy			°F/°C	ppm	cSt	mg/KOH/g	%wt	°F/°C	°F/°C	°F/°C	%
01/07/17	01/11/17	12.0h		320 / 160	14.9	30.3	0.15	0.050	696 / 369	814 / 434	942 / 505	3.44
Baseline Data				459 / 237		37.12	0.90		721 / 383	807 / 431	892 / 478	1.5

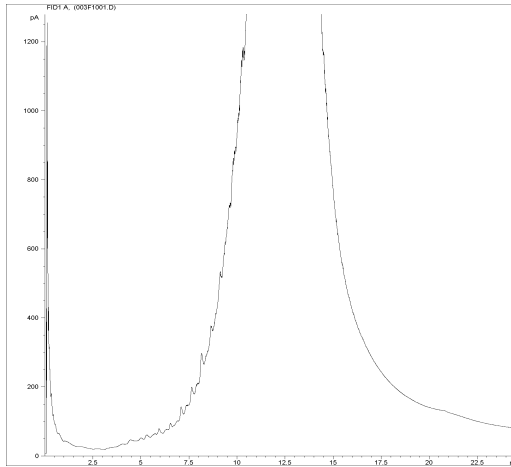




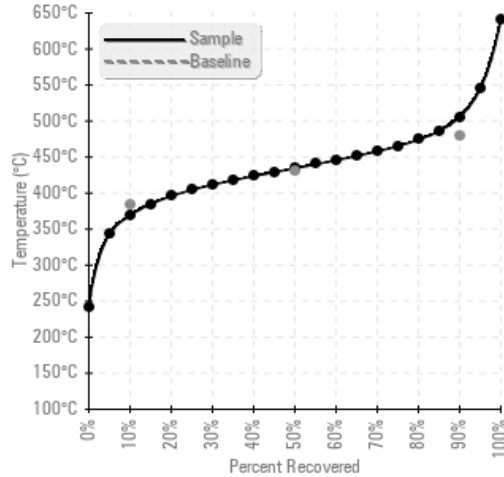
Sample Date	Iron	Chromium	Nickel	Aluminum	Copper	Lead	Tin	Cadmium	Silver	Vanadium	Silicon	Sodium	Potassium	Titanium	Molybdenum	Antimony	Manganese	Lithium	Boron	Magnesium	Calcium	Barium	Phosphorus	Zinc
01/07/17	20	0	0	0	0	0	1	0	0	0	0	0	0	0	0	0	0	0	0	0	0	0	21	0
Baseline Data			0	0						0			0	0					0				230	

Elemental analysis results (above) in parts per million (ppm). [10,000 ppm = 1.0%]

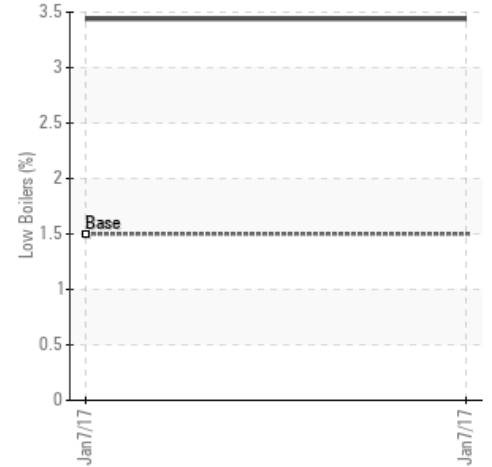
GCD Spectrum



Gas Chromatography Distillation



% Boiling < 335°C



Historical Comments