

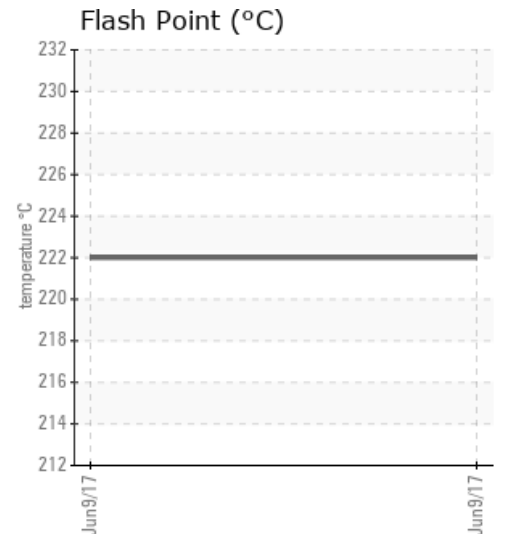
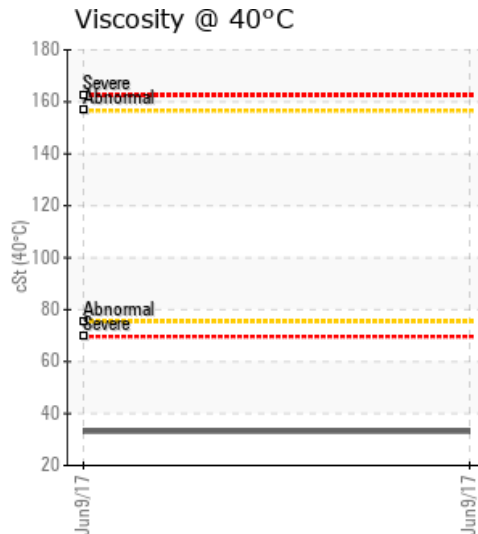
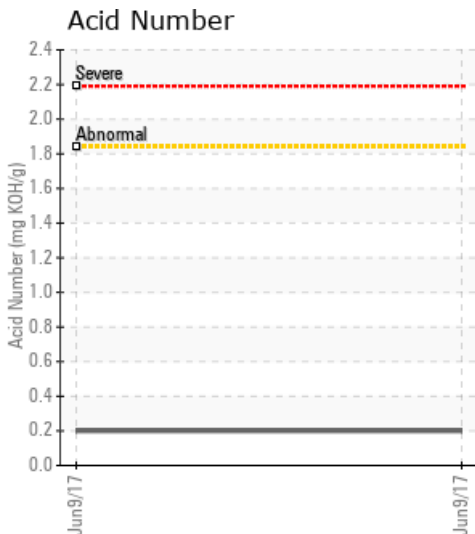
ASPHALT RUBBER PLANT

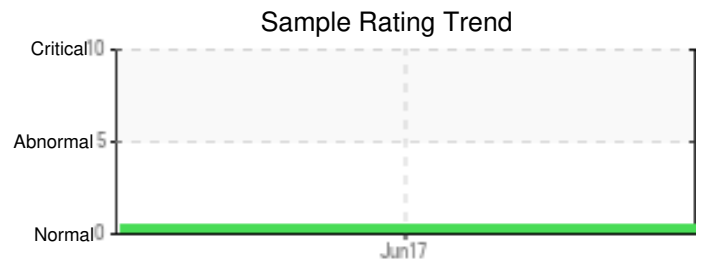
Customer: PTRHTF10190	System Information	Sample Information
HOLLY FRONTIER ASPHALT 7110 W. NORTHERN AVENUE GLENDALE, AZ 85303 USA Attn: MARK NIELSON Tel: (602)617-7010 E-Mail: mark.nielson@hollyfrontier.com	System Volume: 2500 gal Bulk Operating Temp: 460F / 238C Heating Source: Blanket: Fluid: N/A Make:	Lab No: 02155454 Analyst: Steven Slanker Sample Date: 06/09/17 Received Date: 07/04/17 Completed: 07/06/17 To discuss this report contact Steven Slanker at (951)225-2115

Recommendation: This is a Conoco Phillips product but looks good for continued service.

Comments:

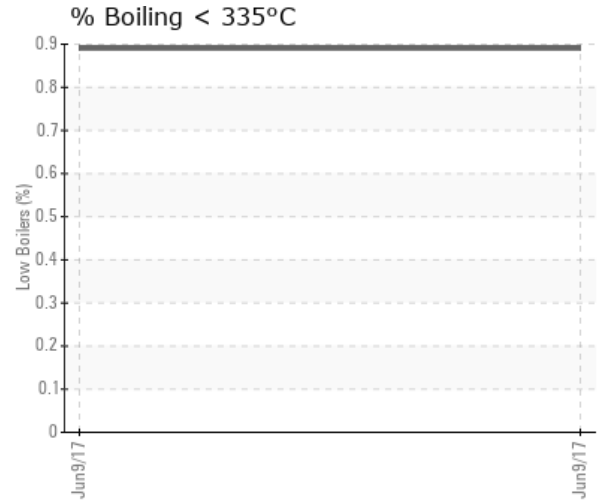
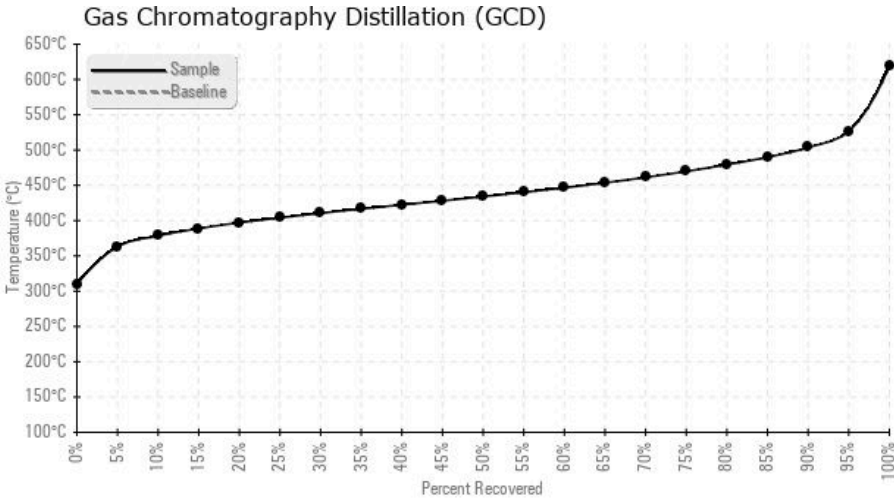
Sample Date	Received Date	Fluid Age	Sample Location	Flash Point (COC)	Water (KF)	Viscosity (40°C)	Acid Number	Solids	GCD 10%	GCD 50%	GCD 90%	GCD % < 335°C
	mm/dd/yy			°F/°C	ppm	cSt	mg/KOH/g	%wt	°F/°C	°F/°C	°F/°C	%
06/09/17	07/04/17	4y	MAIN CIRC. PUMP	432 / 222	104.3	33.1	0.20	0.406	713 / 378	813 / 434	938 / 504	0.89
Baseline Data				32 / 0								





Sample Date	Iron	Chromium	Nickel	Aluminum	Copper	Lead	Tin	Cadmium	Silver	Vanadium	Silicon	Sodium	Potassium	Titanium	Molybdenum	Antimony	Manganese	Lithium	Boron	Magnesium	Calcium	Barium	Phosphorus	Zinc
06/09/17	20	0	0	2	2	0	1	202	0	0	1	5	2	0	0	0	1	0	1	0	202	7	1	2
Baseline Data													0					0					0	

Elemental analysis results (above) in parts per million (ppm). [10,000 ppm = 1.0%]



Historical Comments

Petro-Canada makes no representation or warranty of any kind, either express or implied, as to the accuracy or completeness of the analysis and assumes no responsibility and shall have no liability whatsoever with respect to such analysis, or a party's use of it. Petro-Canada is a division of HollyFrontier Corporation.