

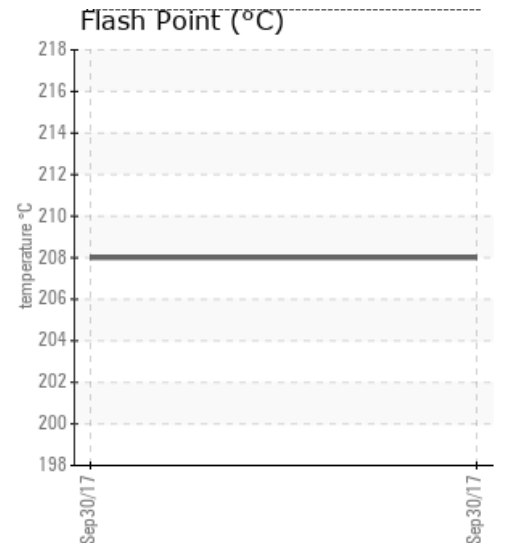
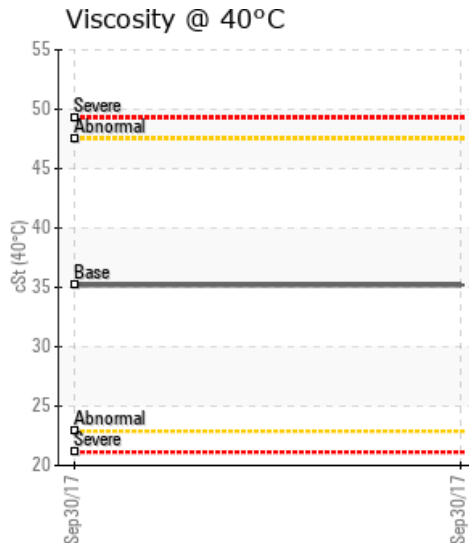
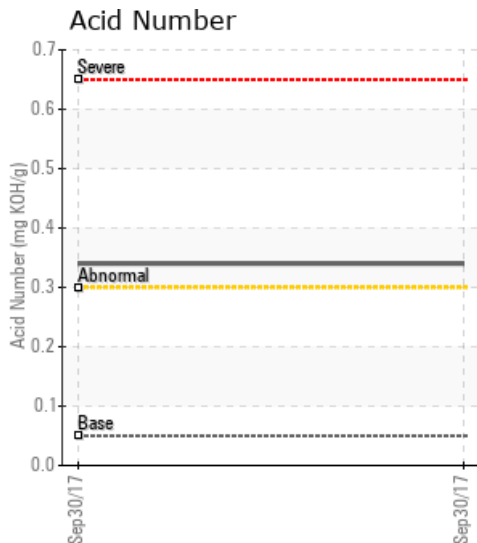
KIRO DANDARO - PRINTING

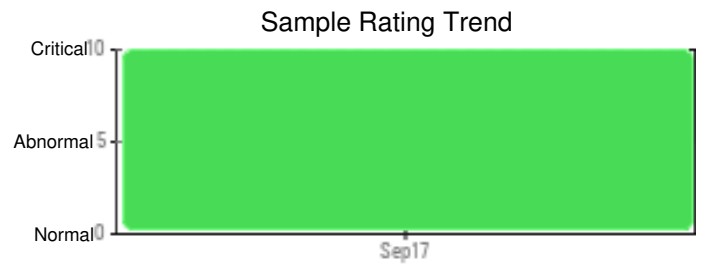
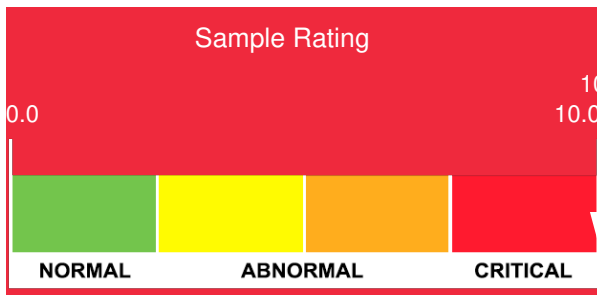
Customer: PTRHTF40126	System Information	Sample Information
TRIBOTIM D.O.O LITIJSKA CESTA 259 LJUBLJANA - DOBRUNJE, Slovenia Attn: Marjan Leskovar Tel: (003)863-0321003 E-Mail: marjan.leskovar@tribotim.eu	System Volume: 3000 ltr Bulk Operating Temp: 464F / 240C Heating Source: Blanket: Fluid: SHELL THERMIA B Make:	Lab No: 02175630 Analyst: Alexander Panov Sample Date: 09/30/17 Received Date: 10/13/17 Completed: 11/13/17 To discuss this report contact Alexander Panov at (496)214-4586269

Recommendation: cannot diagnose from a Petro-Canada perspective, it is a Shell fluid

Comments: Sodium ppm levels are severely high. Barium ppm levels are severely high. Calcium ppm levels are severely high. Zinc ppm levels are severely high. Acid Number (AN) is abnormally high.

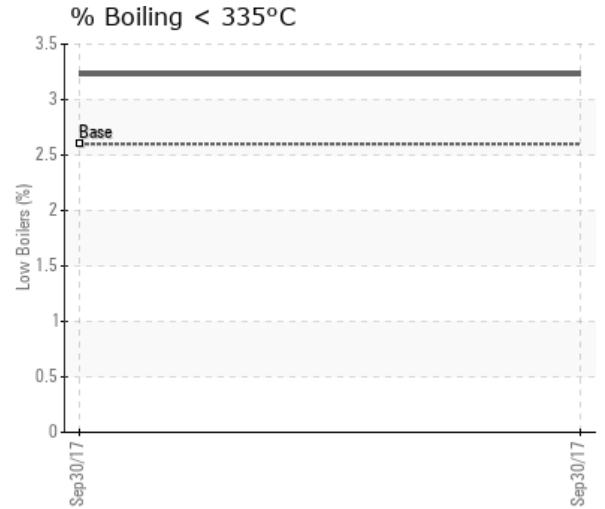
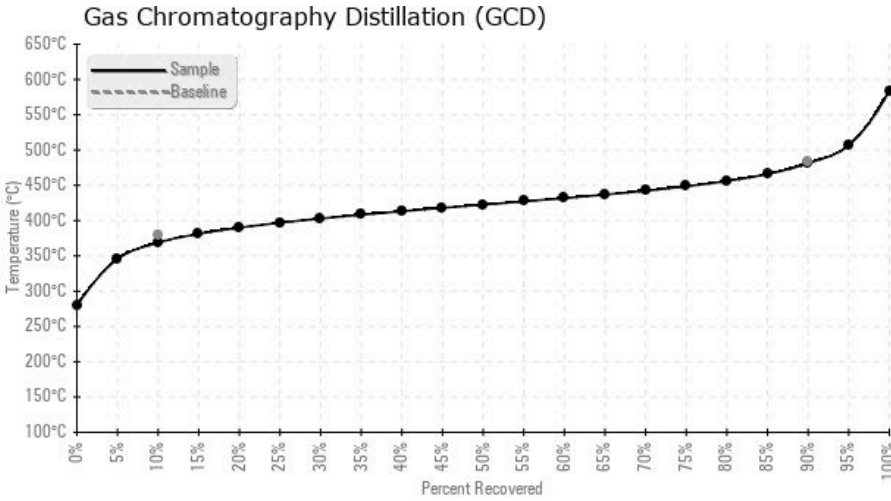
Sample Date	Received Date	Fluid Age	Sample Location	Flash Point (COC)	Water (KF)	Viscosity (40°C)	Acid Number	Solids	GCD 10%	GCD 50%	GCD 90%	GCD % < 335°C
	mm/dd/yy			°F/°C	ppm	cSt	mg/KOH/g	%wt	°F/°C	°F/°C	°F/°C	%
09/30/17	10/13/17	4y	TANK	406 / 208	59.9	35.2	0.340	0.053	696 / 369	793 / 423	898 / 481	3.23
Baseline Data				428 / 220		35.2	0.05		714 / 379		903 / 484	2.60





Sample Date	Iron	Chromium	Nickel	Aluminum	Copper	Lead	Tin	Cadmium	Silver	Vanadium	Silicon	Sodium	Potassium	Titanium	Molybdenum	Antimony	Manganese	Lithium	Boron	Magnesium	Calcium	Barium	Phosphorus	Zinc
09/30/17	26	0	0	0	2	0	0	0	0	0	1	79	1	0	0	0	1	0	0	2	136	1417	85	58
Baseline Data			0	0						0			0	0					0			0		

Elemental analysis results (above) in parts per million (ppm). [10,000 ppm = 1.0%]



Historical Comments

Petro-Canada makes no representation or warranty of any kind, either express or implied, as to the accuracy or completeness of the analysis and assumes no responsibility and shall have no liability whatsoever with respect to such analysis, or a party's use of it. Petro-Canada is a division of HollyFrontier Corporation.