

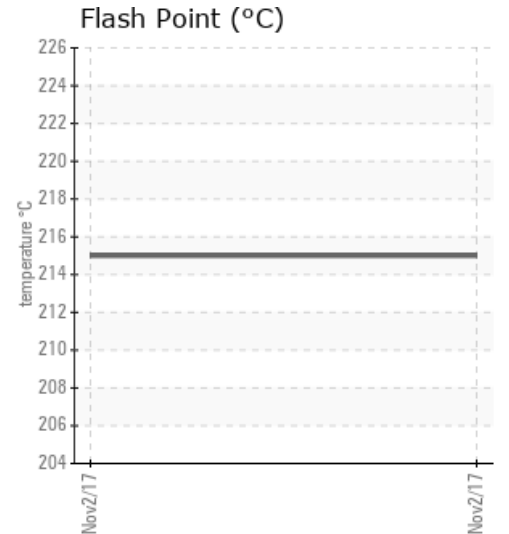
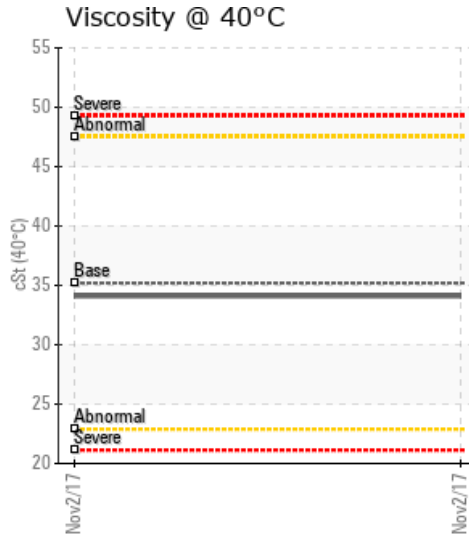
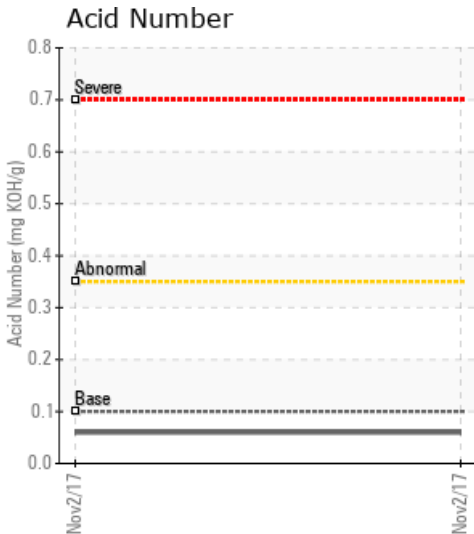
## LN01 Laminator Hot Oil System

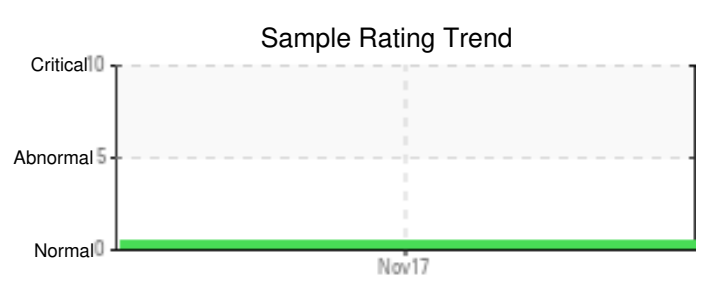
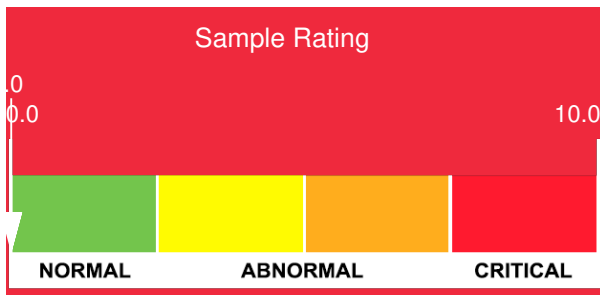
Customer: PTRHTF10141	System Information	Sample Information
TAMKO BUILDING PRODUCTS 2300 35TH ST TUSCALOOSA, AL 35401 USA Attn: Greg Colburn Tel: (205)752-3555 E-Mail: gregory_colburn@tamko.com	System Volume: 110 gal Bulk Operating Temp: 350F / 177C Heating Source: Blanket: Fluid: PETRO CANADA CALFLO HTF Make: Heat Exchanger And T	Lab No: 02181730 Analyst: Manny Garcia Sample Date: 11/02/17 Received Date: 11/13/17 Completed: 11/20/17 To discuss this report contact Manny Garcia at 954-384-7259

Recommendation: Oil is suitable for continued use. Please re-submit sample in 1-year for analysis

Comments: Low Wear Metals and Contamination levels; 14.4 ppm water (Low); Acid number is low; 34.1 CsT @40oC Viscosity; COC Flash Point is 215oC - Excellent; Very Light Debris visible

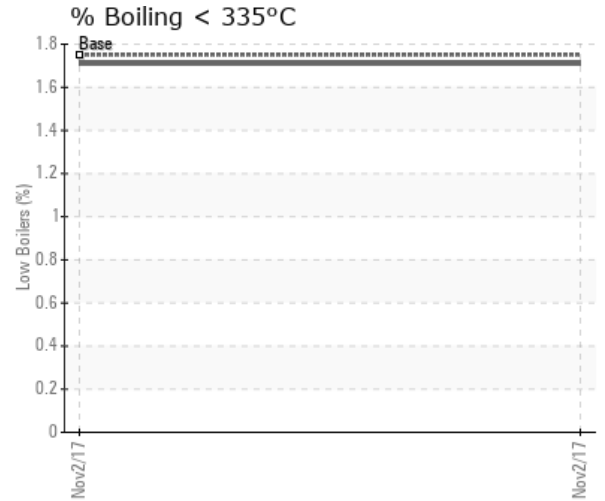
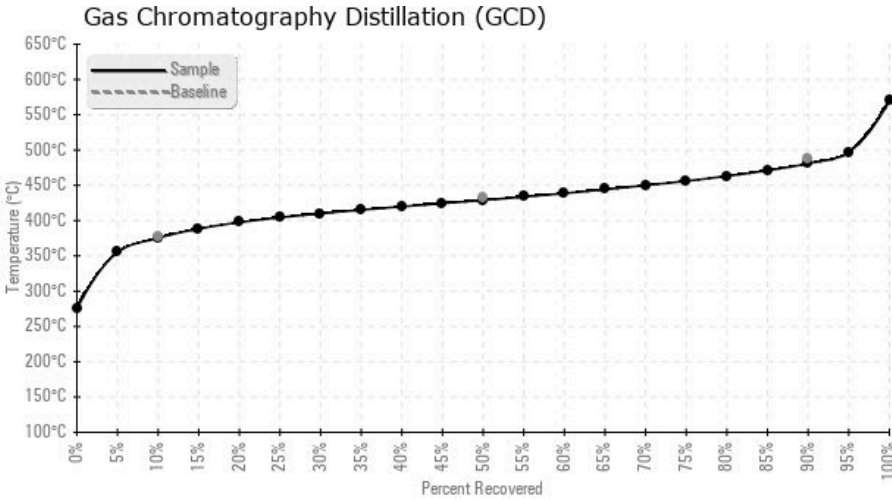
Sample Date	Received Date	Fluid Age	Sample Location	Flash Point (COC)	Water (KF)	Viscosity (40°C)	Acid Number	Solids	GCD 10%	GCD 50%	GCD 90%	GCD % < 335°C
	mm/dd/yy			°F/°C	ppm	cSt	mg/KOH/g	%wt	°F/°C	°F/°C	°F/°C	%
11/02/17	11/13/17	10y		419 / 215	14.4	34.1	0.06	0.036	708 / 375	804 / 429	898 / 481	1.71
Baseline Data				448 / 231		35.20	.1		712 / 378	810 / 432	910 / 488	1.75





Sample Date	Iron	Chromium	Nickel	Aluminum	Copper	Lead	Tin	Cadmium	Silver	Vanadium	Silicon	Sodium	Potassium	Titanium	Molybdenum	Antimony	Manganese	Lithium	Boron	Magnesium	Calcium	Barium	Phosphorus	Zinc
11/02/17	0	0	0	0	0	0	1	0	0	0	0	1	0	0	0	0	0	0	0	0	0	0	16	0
Baseline Data			0	0						0			0	0					0				280	

Elemental analysis results (above) in parts per million (ppm). [10,000 ppm = 1.0%]



### Historical Comments


Petro-Canada makes no representation or warranty of any kind, either express or implied, as to the accuracy or completeness of the analysis and assumes no responsibility and shall have no liability whatsoever with respect to such analysis, or a party's use of it. Petro-Canada is a division of HollyFrontier Corporation.