

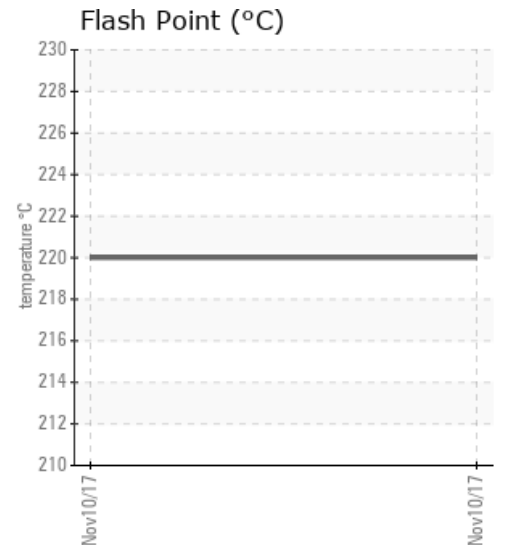
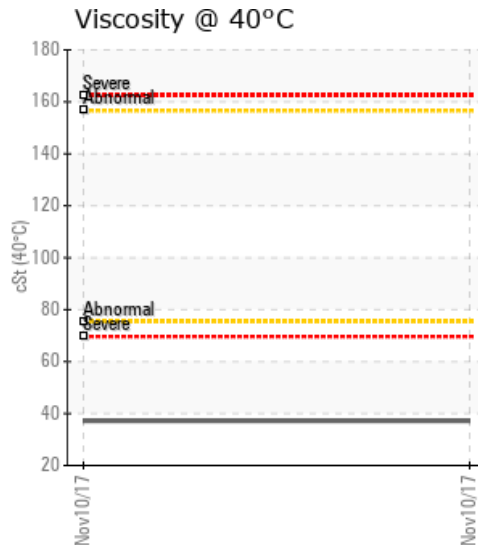
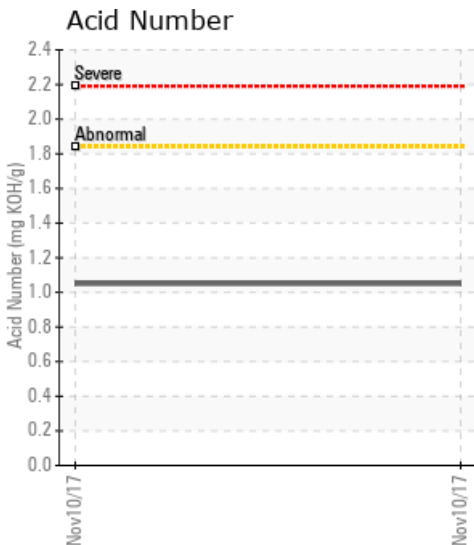
ASTEC DOUBLE BARREL

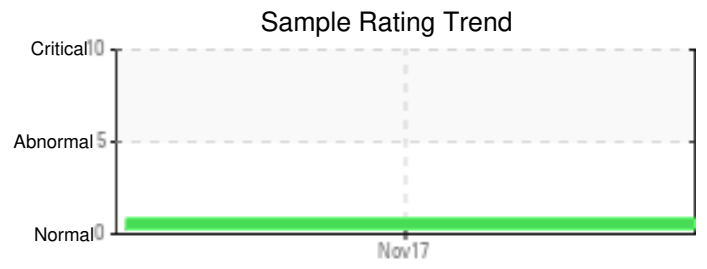
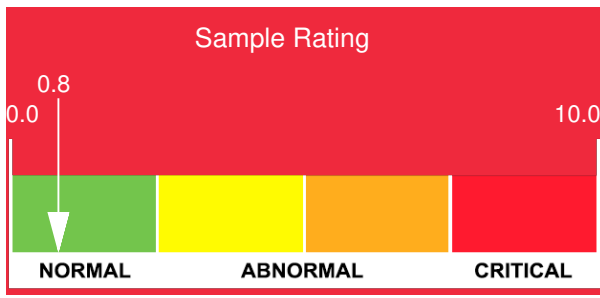
Customer:	System Information	Sample Information
ALL AMERICAN ASPHALT 400 EAST SIXTH STREET CORONA, CA 92878-2229 USA Attn: DANIEL STINSON Tel: E-Mail: dstinson@allamericanasphalt.com	System Volume: 0 gal Bulk Operating Temp: Not Specified Heating Source: Blanket: Fluid: N/A Make: ASTEC	Lab No: 02184954 Analyst: Bill Quesnel CLS, OMA II, MLA-III, LLA-I Sample Date: 11/10/17 Received Date: 11/29/17 Completed: 12/04/17 To discuss this report contact Bill

Recommendation: Resample at the next service interval to monitor. Please specify the brand, type, and viscosity of the oil on your next sample.

Comments: Pentane Insolubles levels are abnormally high. No other contaminants were detected in the fluid. The AN level is acceptable for this fluid. The condition of the fluid is suitable for further service.

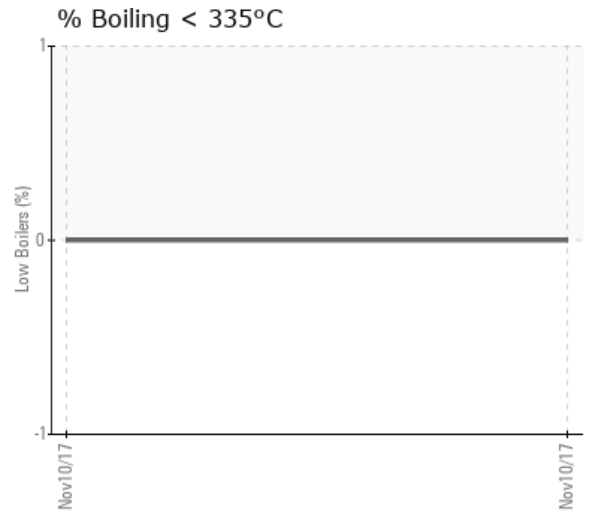
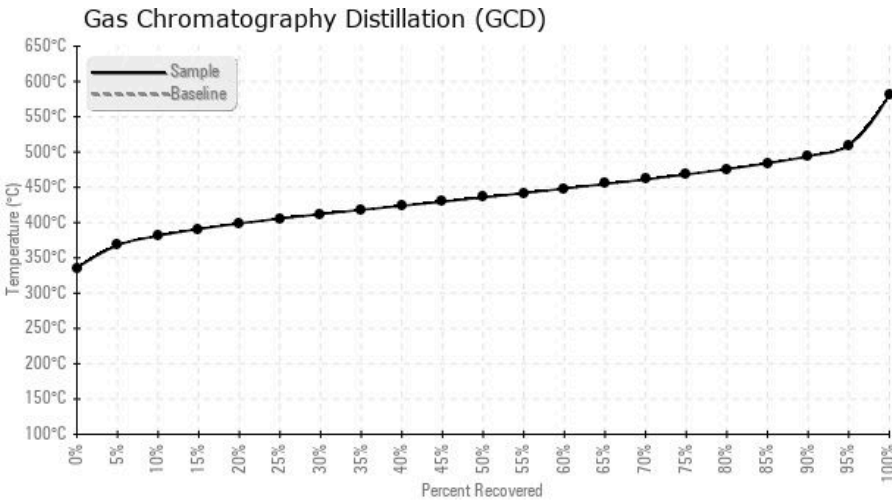
Sample Date	Received Date	Fluid Age	Sample Location	Flash Point (COC)	Water (KF)	Viscosity (40°C)	Acid Number	Solids	GCD 10%	GCD 50%	GCD 90%	GCD % < 335°C
	mm/dd/yy			°F/°C	ppm	cSt	mg/KOH/g	%wt	°F/°C	°F/°C	°F/°C	%
11/10/17	11/29/17	0y		428 / 220	78.7	37.2	1.05	0.709	718 / 381	816 / 436	921 / 494	0.00
Baseline Data				32 / 0								





Sample Date	Iron	Chromium	Nickel	Aluminum	Copper	Lead	Tin	Cadmium	Silver	Vanadium	Silicon	Sodium	Potassium	Titanium	Molybdenum	Antimony	Manganese	Lithium	Boron	Magnesium	Calcium	Barium	Phosphorus	Zinc
11/10/17	60	0	0	0	0	0	2	11	0	0	35	0	1	0	0	1	0	0	0	0	11	8	103	19
Baseline Data													0						0				0	

Elemental analysis results (above) in parts per million (ppm). [10,000 ppm = 1.0%]



Historical Comments

WearCheck Canada makes no representation or warranty of any kind, either express or implied, as to the accuracy or completeness of the analysis and assumes no responsibility and shall have no liability whatsoever with respect to such analysis, or a party's use of it.