

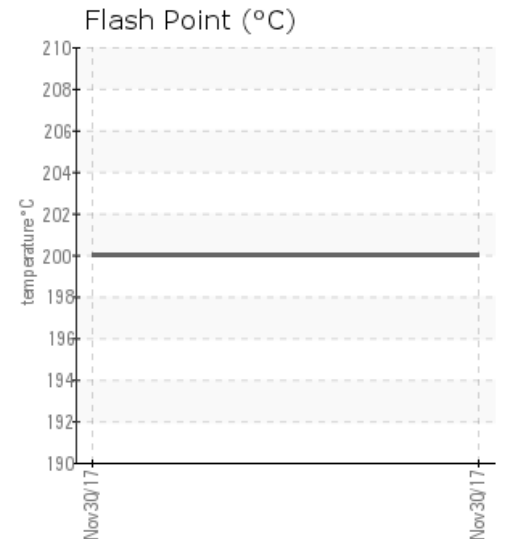
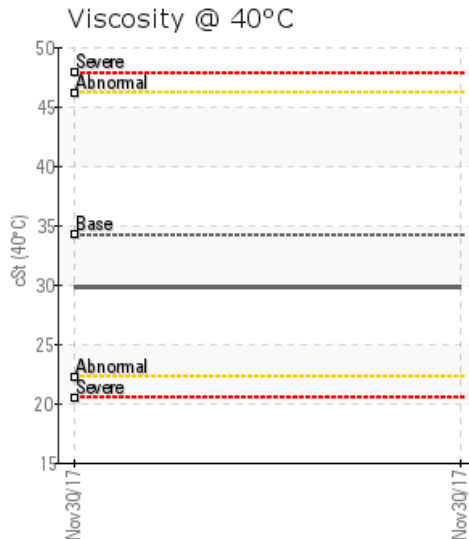
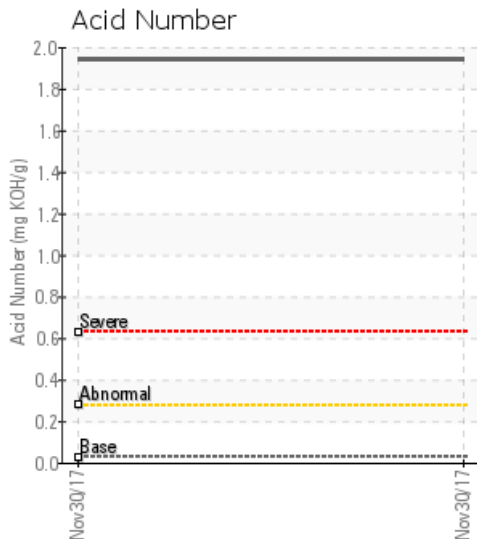
## KING PAVING HT SYST

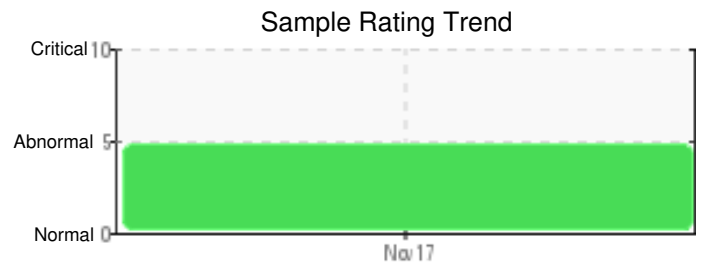
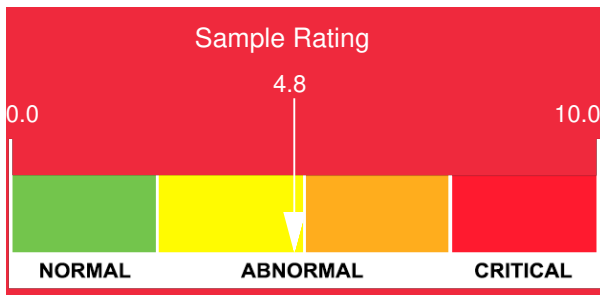
Customer: PTRHTF30108	System Information	Sample Information
King Paving 1077 Howard Road Burlington, ON L7R 3X5 Canada Attn: Barry Messier Tel: (905)639-4401 E-Mail: bmessier@kpmindustries.com	System Volume: 2000 ltr Bulk Operating Temp: Not Specified Heating Source: Blanket: Fluid: PETRO CANADA PETRO-THERM Make:	Lab No: 02185300 Analyst: Adam Koscielak Sample Date: 11/30/17 Received Date: 12/01/17 Completed: 12/07/17 To discuss this report contact Adam Koscielak at 905-331-1323

Recommendation: High AN (Acid Number) indicates that oil is oxidized. Viscosity is lower than typical and indicates potential presence of lower boiling point material. GCD (Simulated Distillation) 90% result is higher than typical indicating fluid oxidation. High pentane insolubles indicates presence of solids in the fluid. Recommend flush and refill the system with new fluid.

Comments: Pentane Insolubles levels are abnormally high. Acid Number (AN) is severely high. (GCD) 90% Distillation Point is marginally high.

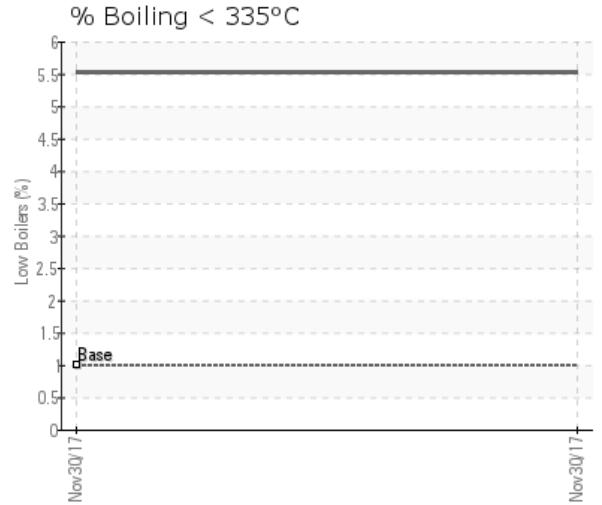
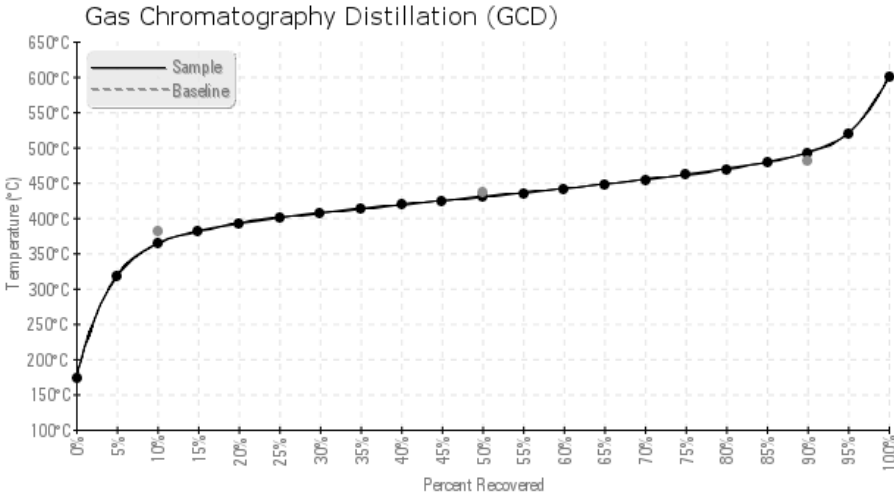
Sample Date	Received Date	Fluid Age	Sample Location	Flash Point (COC)	Water (KF)	Viscosity (40°C)	Acid Number	Solids	GCD 10%	GCD 50%	GCD 90%	GCD % < 335°C
	mm/dd/yy			°F/°C	ppm	cSt	mg/KOH/g	%wt	°F/°C	°F/°C	°F/°C	%
11/30/17	12/01/17	0h	AK171130-01	392 / 200	30.9	29.8	1.94	0.511	686 / 364	805 / 430	919 / 493	5.53
Baseline Data				433 / 223		34.2	0.03		720 / 382	817 / 436	900 / 482	1.00





Sample Date	Iron	Chromium	Nickel	Aluminum	Copper	Lead	Tin	Cadmium	Silver	Vanadium	Silicon	Sodium	Potassium	Titanium	Molybdenum	Antimony	Manganese	Lithium	Boron	Magnesium	Calcium	Barium	Phosphorus	Zinc
11/30/17	44	0	0	0	1	1	0	1	0	0	1	1	0	0	0	0	0	0	1	0	1	0	0	2
<b>Baseline Data</b>				0	0					0			0	0					0			0		

Elemental analysis results (above) in parts per million (ppm). [10,000 ppm = 1.0%]



### Historical Comments


Petro-Canada makes no representation or warranty of any kind, either express or implied, as to the accuracy or completeness of the analysis and assumes no responsibility and shall have no liability whatsoever with respect to such analysis, or a party's use of it. Petro-Canada is a division of HollyFrontier Corporation.