

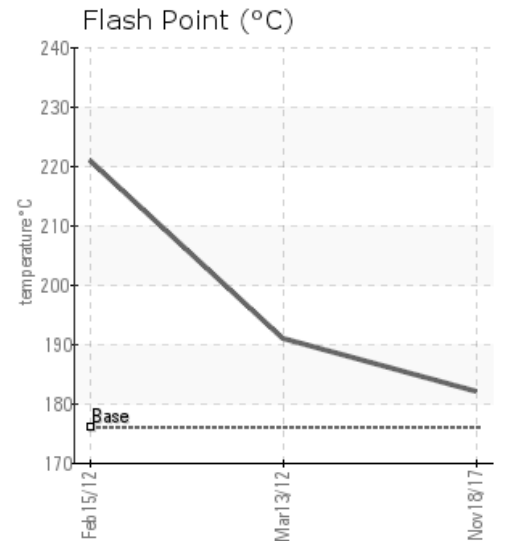
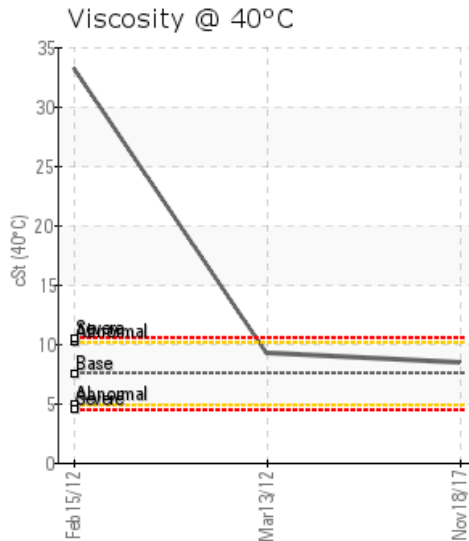
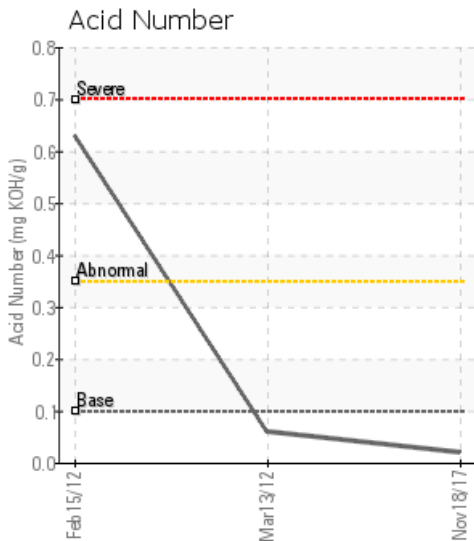
VAPORIZER #2

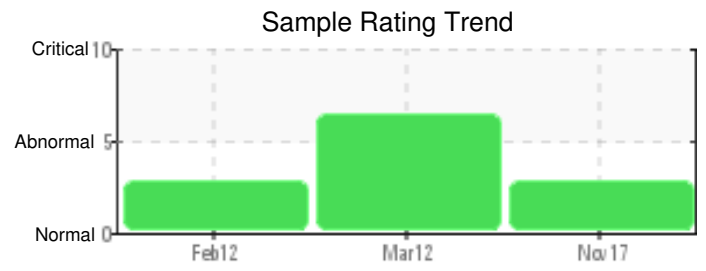
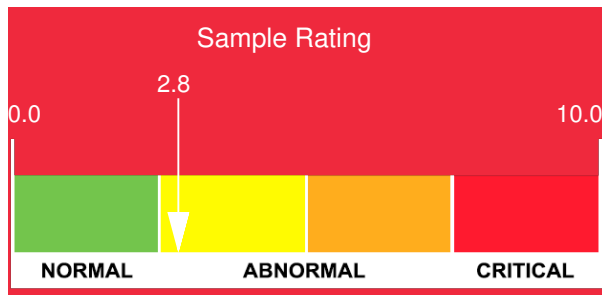
Customer: PTRHTF10092	System Information	Sample Information
REC GROUP 119410 RICK JONES WAY BUTTE (SILVER BOW), MT 59750 USA Attn: Bill Telling Tel: (406)496-9929 E-Mail: bill.telling@recsilicon.com	System Volume: 120 gal Bulk Operating Temp: 400F / 204C Heating Source: Blanket: Fluid: PETRO CANADA CALFLO LT Make: WELLMAN	Lab No: 02185630 Analyst: Ron LeBlanc Sample Date: 11/18/17 Received Date: 12/04/17 Completed: 12/06/17 To discuss this report contact Ron LeBlanc at (541)967-6499

Recommendation: (GCD) 90% Distillation Point is severely high. (GCD) 50% Distillation Point is marginally high. Silicon is elevated over last 2 samples. Possible process leak. Water has been removed in comparison to last sample.

Comments: (GCD) 90% Distillation Point is severely high. (GCD) 50% Distillation Point is marginally high.

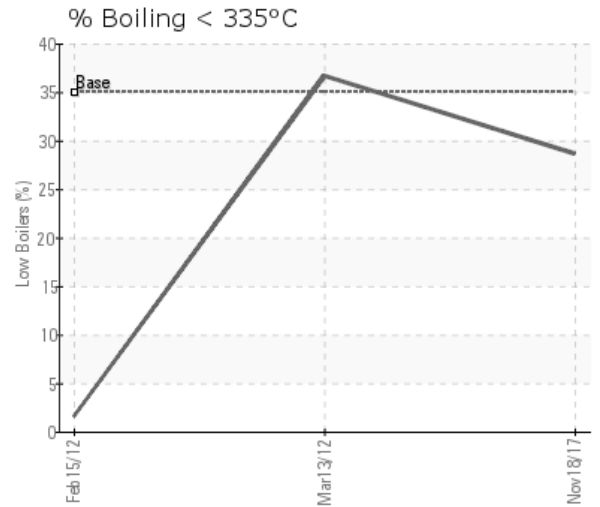
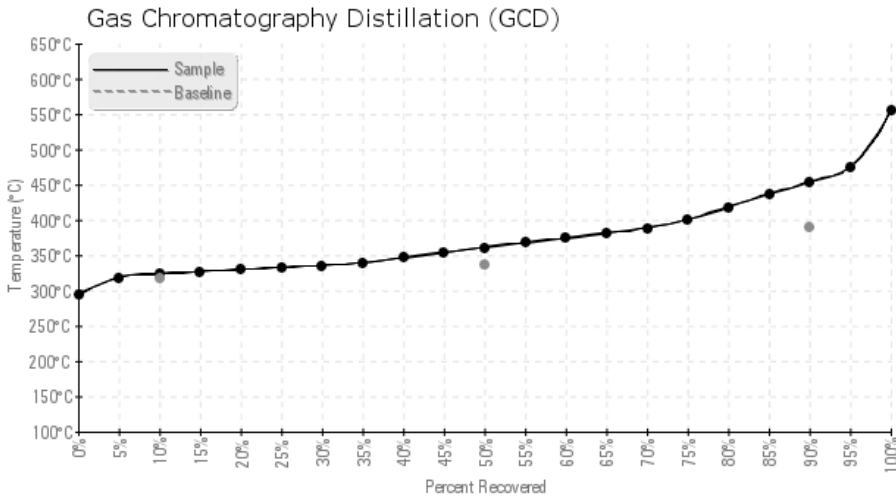
Sample Date	Received Date	Fluid Age	Sample Location	Flash Point (COC)	Water (KF)	Viscosity (40°C)	Acid Number	Solids	GCD 10%	GCD 50%	GCD 90%	GCD % < 335°C
	mm/dd/yy			°F/°C	ppm	cSt	mg/KOH/g	%wt	°F/°C	°F/°C	°F/°C	%
11/18/17	12/04/17	0h		360 / 182	2.2	8.5	0.020	0.028	614 / 324	682 / 361	848 / 454	28.64
03/13/12	03/19/12		BOTTOM DRAIN	376 / 191	1507	9.2	0.06	0.006	612 / 322	666 / 352	778 / 414	36.68
02/15/12	02/22/12		BOTTOM DRAIN	430 / 221	10	33.2	0.63	0.055	693 / 367	785 / 418	888 / 475	1.509
Baseline Data				349 / 176		7.52	0.1		604 / 318	640 / 338	734 / 390	35.0





Sample Date	Iron	Chromium	Nickel	Aluminum	Copper	Lead	Tin	Cadmium	Silver	Vanadium	Silicon	Sodium	Potassium	Titanium	Molybdenum	Antimony	Manganese	Lithium	Boron	Magnesium	Calcium	Barium	Phosphorus	Zinc
11/18/17	1	0	0	0	1	4	1	0	0	0	6	8	0	0	0	0	0	0	0	0	0	0	267	1
03/13/12	0	0	0	0	0	0	1	0	0	0	5	4	0	0	0	0	0	0	0	0	0	2	228	2
02/15/12	0	0	0	0	0	0	0	0	0	0	0	0	0	0	0	0	0	0	2	0	0	0	204	2
Baseline Data			0	0						0			0	0					0				270	

Elemental analysis results (above) in parts per million (ppm). [10,000 ppm = 1.0%]



Historical Comments	
03/13/12	The oil would look fine, with perhaps a small amount of left-over from the previous product which explains the slightly higher viscosity compared to fresh Calflo LT. However, the water content is 0.15% (1500 ppm) which is high for heat transfer systems. Chances are that it is noticeable in the way the system operates and behave when heated above 212F. If no water based material was used to clean, perhaps it was just a dirty sample port. Feel free to re-sample but make sure to allow a good 1/2 to 3/4 gallon of oil to flow through the valve before collecting the sample.
02/15/12	The oil shows a high Acid Number, indicative of acids in the oil. The acids can either come from oil oxidation or contamination by an acid (like hydrochloric acid resulting from a chlorosilane leak). There is no Silicon detected so we lean towards an advanced degradation stage for the oil. The sample does not show an excessive amount of solids for a bottom drain sample so the system does not appear to be excessively dirty but it is possible that heat transfer surfaces may be coated with insoluble material that accumulated over the years. Please take a sample about 24-48 hrs after the system has been cleaned, flushed and put back into service in order to get a baseline.

Petro-Canada makes no representation or warranty of any kind, either express or implied, as to the accuracy or completeness of the analysis and assumes no responsibility and shall have no liability whatsoever with respect to such analysis, or a party's use of it. Petro-Canada is a division of HollyFrontier Corporation.