

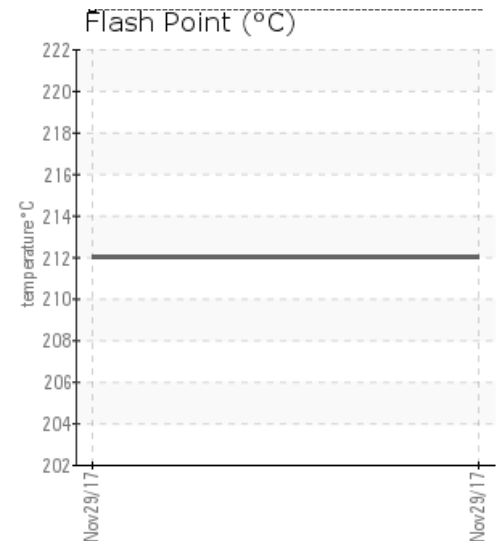
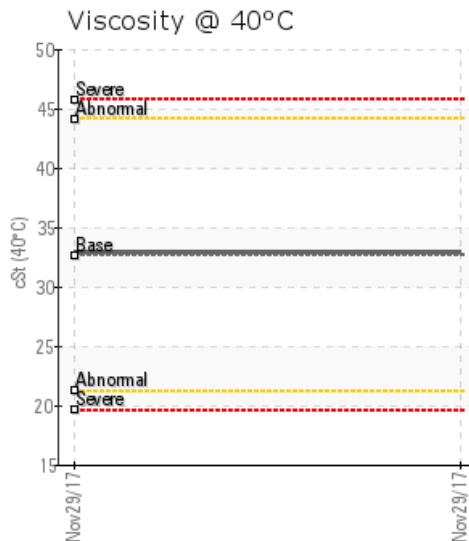
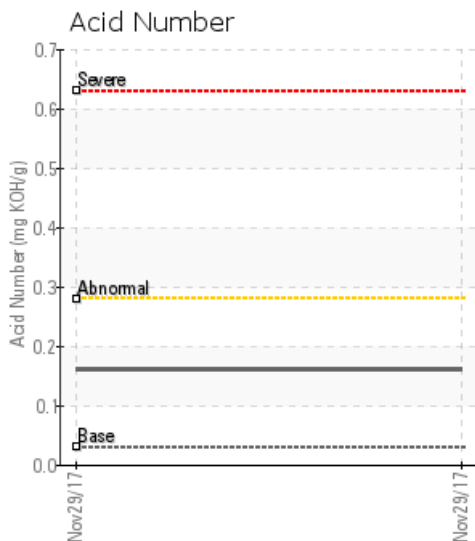
## ALBOND

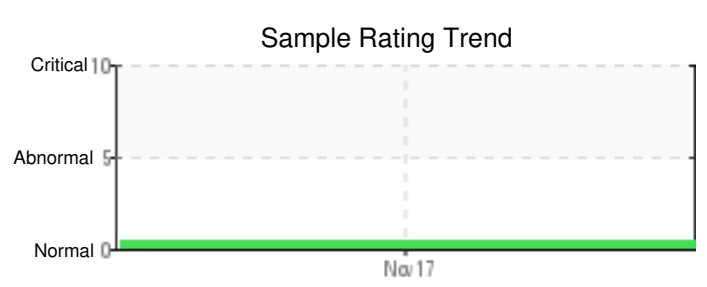
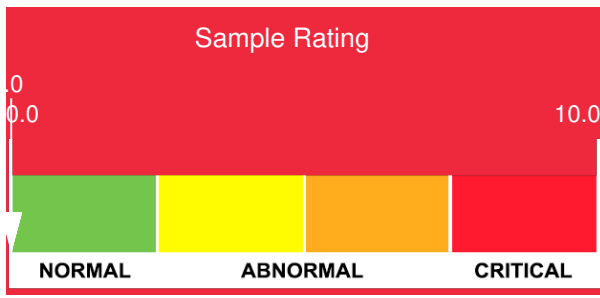
Customer: PTRHTF40074	System Information	Sample Information
LUBRICON LTD STI ATASEHIR ISTANBUL ISTANBUL, 34770 Attn: Murat Baslilar Tel: E-Mail: mbaslilar@lubricon.com.tr	System Volume: 84 ltr Bulk Operating Temp: 446F / 230C Heating Source: Blanket: Fluid: PETRO CANADA CALFLO AF Make: KOREA BRAND	Lab No: 02188407 Analyst: Philip Riley Sample Date: 11/29/17 Received Date: 12/15/17 Completed: 12/22/17 To discuss this report contact Philip Riley at (440)124-4378171

Recommendation: All fluid parameters normal and within allowable limits. Fit for further use

Comments:

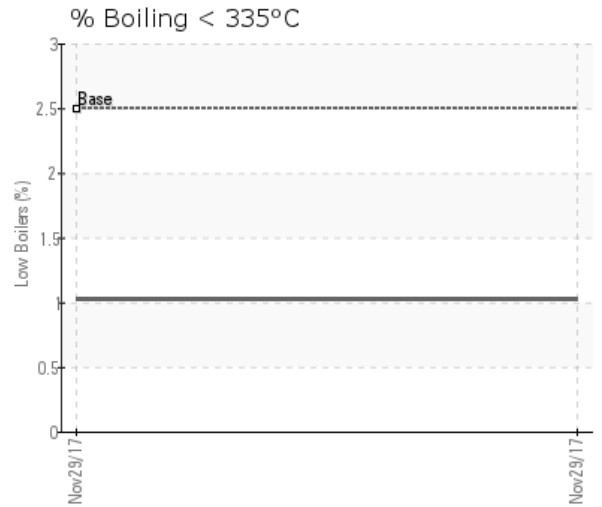
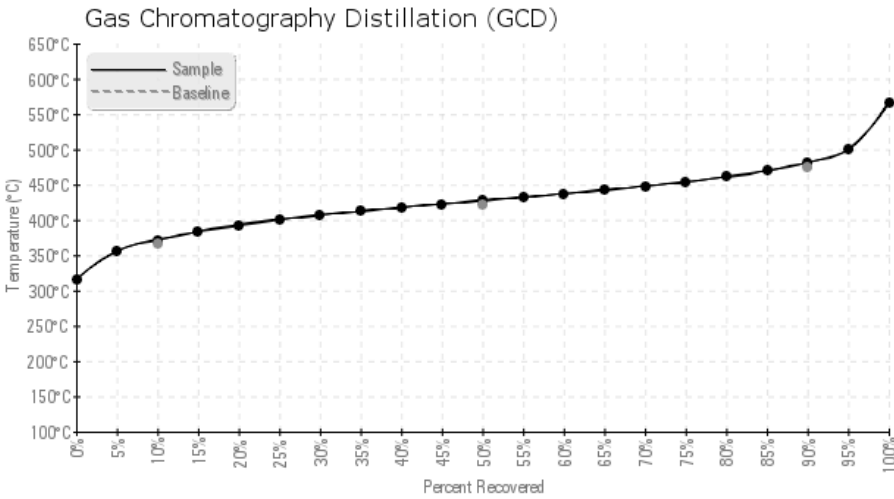
Sample Date	Received Date	Fluid Age	Sample Location	Flash Point (COC)	Water (KF)	Viscosity (40°C)	Acid Number	Solids	GCD 10%	GCD 50%	GCD 90%	GCD % < 335°C
	mm/dd/yy			°F/°C	ppm	cSt	mg/KOH/g	%wt	°F/°C	°F/°C	°F/°C	%
11/29/17	12/15/17	10m		414 / 212	32.5	32.9	0.16	0.132	701 / 372	801 / 427	899 / 482	1.03
Baseline Data				435 / 224		32.7	0.03		693 / 367	790 / 421	887 / 475	2.5





Sample Date	Iron	Chromium	Nickel	Aluminum	Copper	Lead	Tin	Cadmium	Silver	Vanadium	Silicon	Sodium	Potassium	Titanium	Molybdenum	Antimony	Manganese	Lithium	Boron	Magnesium	Calcium	Barium	Phosphorus	Zinc	
11/29/17	10	0	0	0	4	0	0	5	0	0	0	2	1	0	0	0	0	0	0	0	5	0	157	1	
<b>Baseline Data</b>			0	0						0			0	0					0					270	

Elemental analysis results (above) in parts per million (ppm). [10,000 ppm = 1.0%]



### Historical Comments


Petro-Canada makes no representation or warranty of any kind, either express or implied, as to the accuracy or completeness of the analysis and assumes no responsibility and shall have no liability whatsoever with respect to such analysis, or a party's use of it. Petro-Canada is a division of HollyFrontier Corporation.