

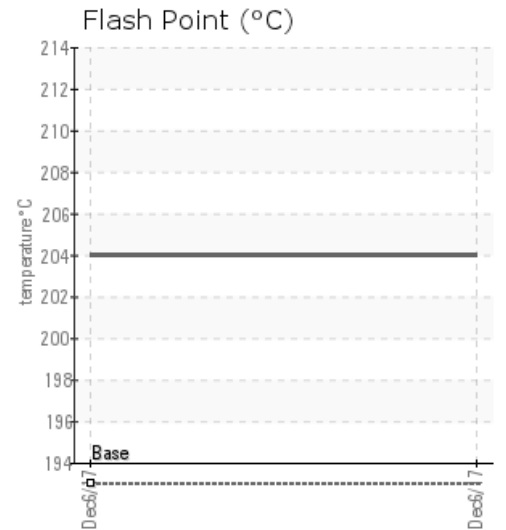
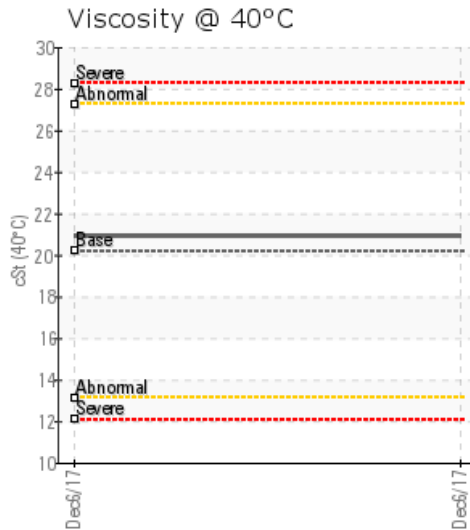
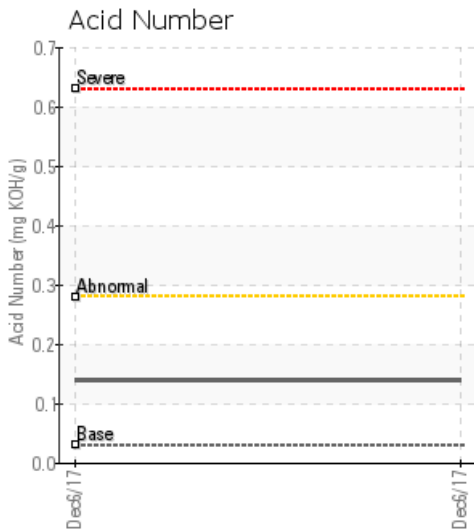
[TRAVELING PLANT] 401

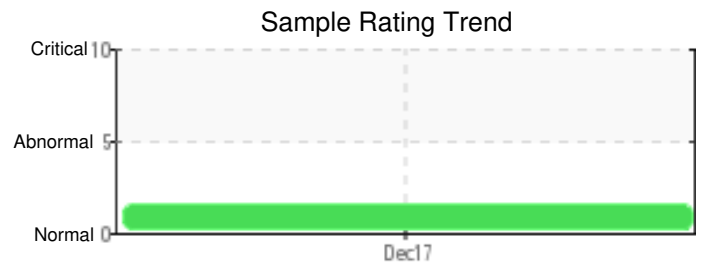
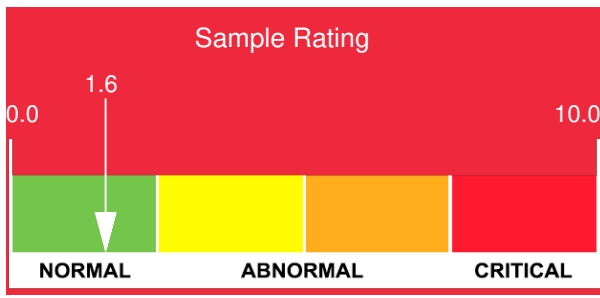
| Customer: PTRHTF10192 | System Information | Sample Information |
|--|---|---|
| HARDRIVES INC 502 S 33RD ST SAINT CLOUD, MN 56301 USA Attn: Chuck Theel Tel: (320)227-1681 E-Mail: ctheel@hardrivesinc.com | System Volume: 300 gal Bulk Operating Temp: 400F / 204C Heating Source: Blanket: Fluid: MOBIL MOBILTHERM 603 Make: CEI EQUIPMENT | Lab No: 02189487 Analyst: Neil Buchanan Sample Date: 12/06/17 Received Date: 12/21/17 Completed: 01/05/18 To discuss this report contact Neil Buchanan at 612-619-6571 |

Recommendation: Sample looks good with the exception of Pentane Insolubles being higher than the 0.5% condemning limit. Recommend high temperature oil filters be installed.

Comments: Pentane Insolubles levels are severely high.

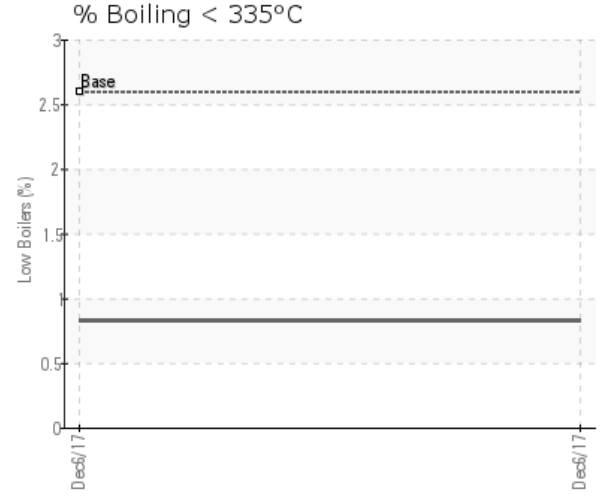
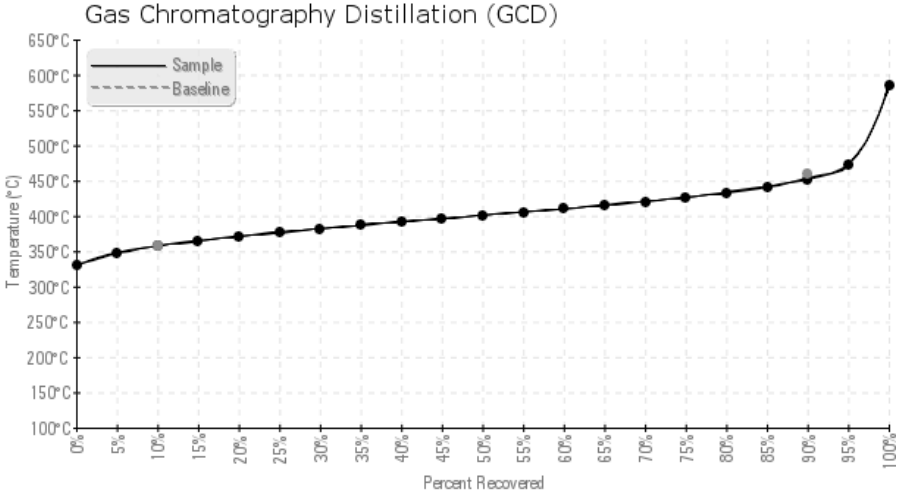
| Sample Date | Received Date | Fluid Age | Sample Location | Flash Point (COC) | Water (KF) | Viscosity (40°C) | Acid Number | Solids | GCD 10% | GCD 50% | GCD 90% | GCD % < 335°C |
|---------------|---------------|-----------|-----------------|-------------------|------------|------------------|-------------|--------|-----------|-----------|-----------|---------------|
| | mm/dd/yy | | | °F/°C | ppm | cSt | mg/KOH/g | %wt | °F/°C | °F/°C | °F/°C | % |
| 12/06/17 | 12/21/17 | 2y | | 399 / 204 | 209.4 | 20.9 | 0.14 | 0.612 | 675 / 357 | 753 / 401 | 846 / 452 | 0.83 |
| Baseline Data | | | | 379 / 193 | | 20.2 | 0.03 | | 676 / 358 | | 858 / 459 | 2.6 |





| Sample Date | Iron | Chromium | Nickel | Aluminum | Copper | Lead | Tin | Cadmium | Silver | Vanadium | Silicon | Sodium | Potassium | Titanium | Molybdenum | Antimony | Manganese | Lithium | Boron | Magnesium | Calcium | Barium | Phosphorus | Zinc |
|----------------------|------|----------|--------|----------|--------|------|-----|---------|--------|----------|---------|--------|-----------|----------|------------|----------|-----------|---------|-------|-----------|---------|--------|------------|------|
| 12/06/17 | 60 | 0 | 0 | 0 | 4 | 2 | 0 | 4 | 0 | 0 | 4 | 4 | 0 | 0 | 0 | 0 | 1 | 0 | 0 | 0 | 4 | 0 | 2 | 2 |
| Baseline Data | | | 0 | 0 | | | | | | 0 | | | 0 | 0 | | | | | 0 | | | | 0 | |

Elemental analysis results (above) in parts per million (ppm). [10,000 ppm = 1.0%]



Historical Comments

| |
|--|
| |
| |
| |
| |
| |

Petro-Canada makes no representation or warranty of any kind, either express or implied, as to the accuracy or completeness of the analysis and assumes no responsibility and shall have no liability whatsoever with respect to such analysis, or a party's use of it. Petro-Canada is a division of HollyFrontier Corporation.