

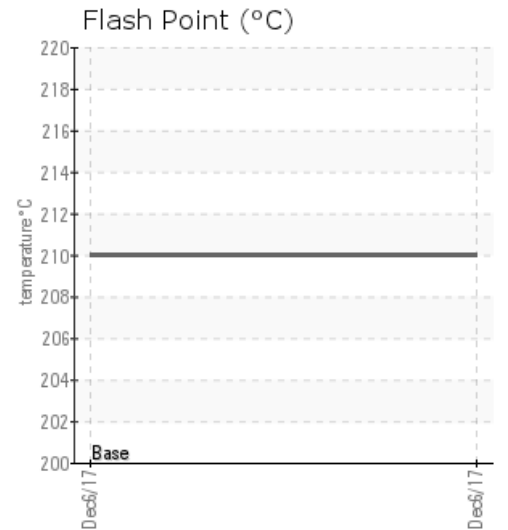
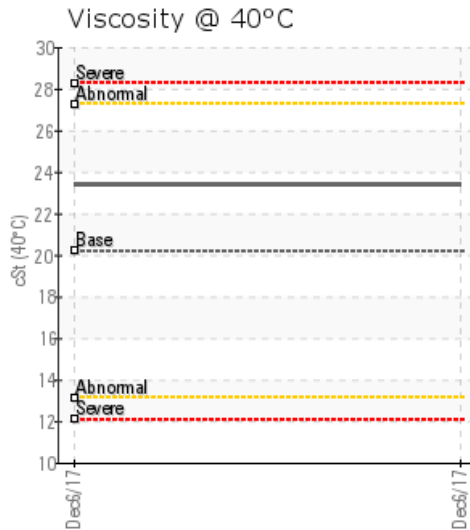
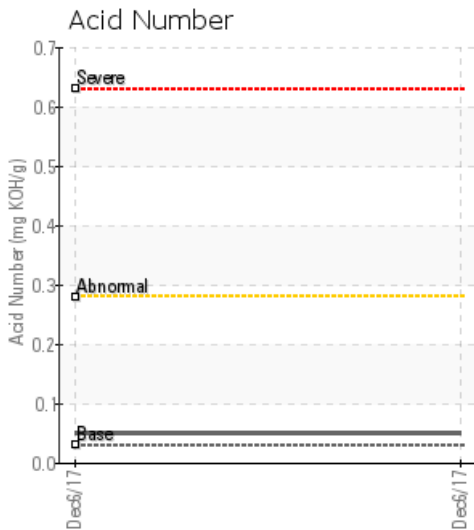
## [TRAVELING PLANT] 501 2

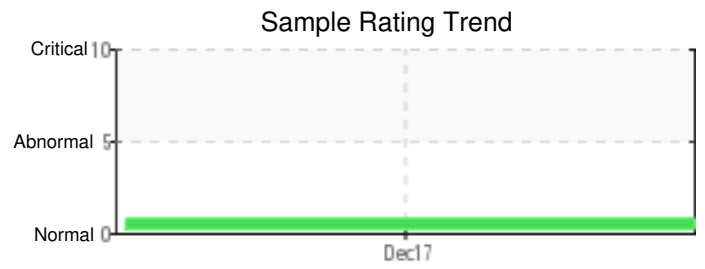
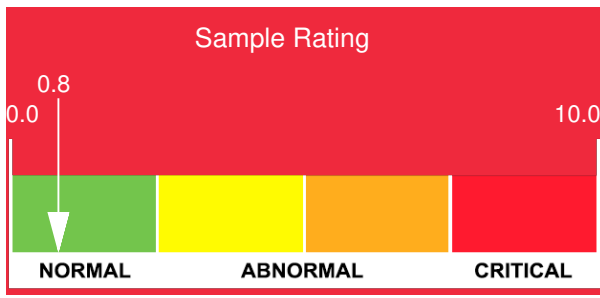
Customer: PTRHTF10192	System Information	Sample Information
<b>HARDRIVES INC</b> 502 S 33RD ST SAINT CLOUD, MN 56301 USA Attn: Chuck Theel Tel: (320)227-1681 E-Mail: ctheel@hardrivesinc.com	System Volume: 250 gal Bulk Operating Temp: 400F / 204C Heating Source: Blanket: Fluid: MOBIL MOBILTHERM 603 Make: CEI EQUIPMENT	Lab No: 02189488 Analyst: Neil Buchanan Sample Date: 12/06/17 Received Date: 12/21/17 Completed: 01/05/18 To discuss this report contact Neil Buchanan at 612-619-6571

Recommendation: Sample looks good with the exception of Pentane Insolubles being high. Recommend high temperature filters be installed to reduce this. Resample next interval to monitor.

Comments: Pentane Insolubles levels are abnormally high.

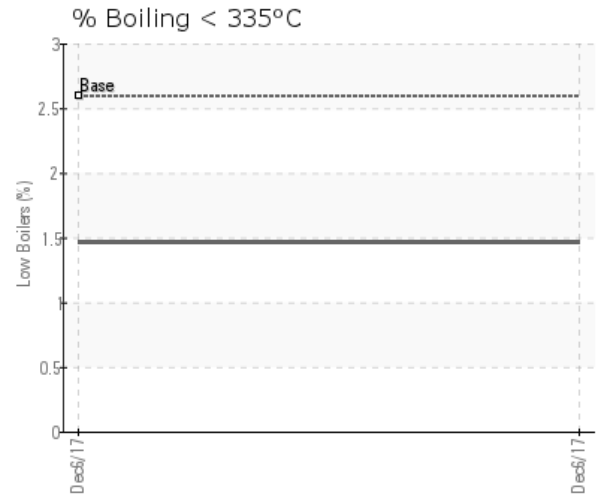
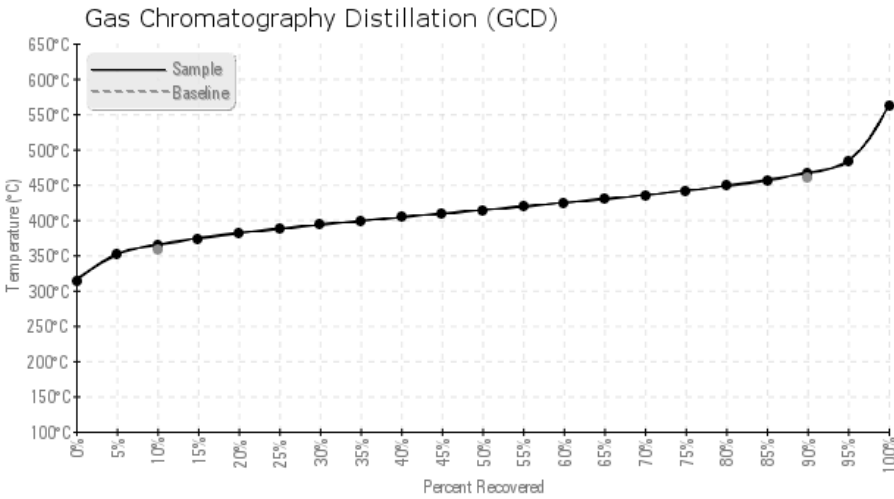
Sample Date	Received Date	Fluid Age	Sample Location	Flash Point (COC)	Water (KF)	Viscosity (40°C)	Acid Number	Solids	GCD 10%	GCD 50%	GCD 90%	GCD % < 335°C
	mm/dd/yy			°F/°C	ppm	cSt	mg/KOH/g	%wt	°F/°C	°F/°C	°F/°C	%
12/06/17	12/21/17	5y		410 / 210	4.2	23.4	0.05	0.437	688 / 365	777 / 414	872 / 467	1.47
Baseline Data				379 / 193		20.2	0.03		676 / 358		858 / 459	2.6





Sample Date	Iron	Chromium	Nickel	Aluminum	Copper	Lead	Tin	Cadmium	Silver	Vanadium	Silicon	Sodium	Potassium	Titanium	Molybdenum	Antimony	Manganese	Lithium	Boron	Magnesium	Calcium	Barium	Phosphorus	Zinc
12/06/17	21	0	0	0	5	1	0	22	0	0	2	2	0	0	0	0	0	0	1	1	22	8	10	14
<b>Baseline Data</b>			0	0						0			0	0					0				0	

Elemental analysis results (above) in parts per million (ppm). [10,000 ppm = 1.0%]



### Historical Comments


Petro-Canada makes no representation or warranty of any kind, either express or implied, as to the accuracy or completeness of the analysis and assumes no responsibility and shall have no liability whatsoever with respect to such analysis, or a party's use of it. Petro-Canada is a division of HollyFrontier Corporation.