

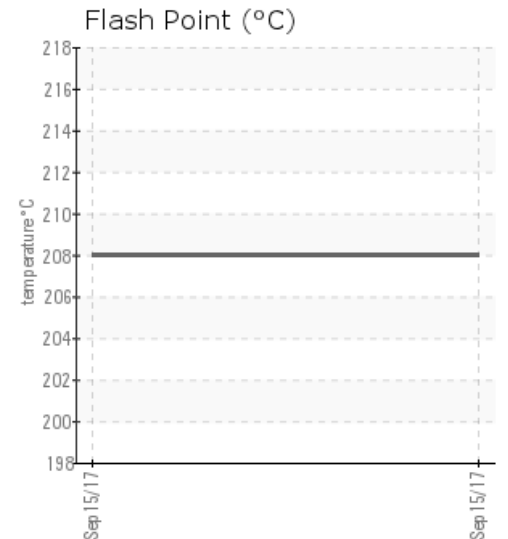
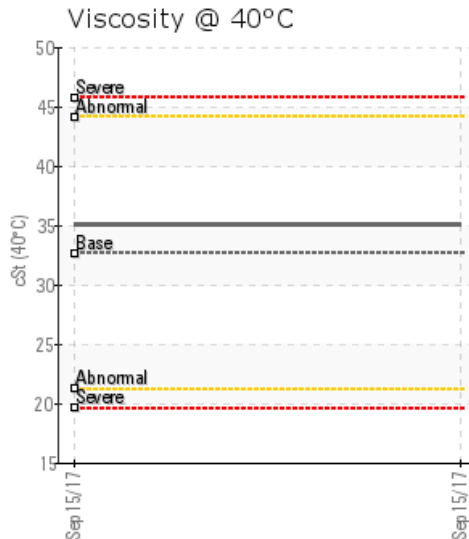
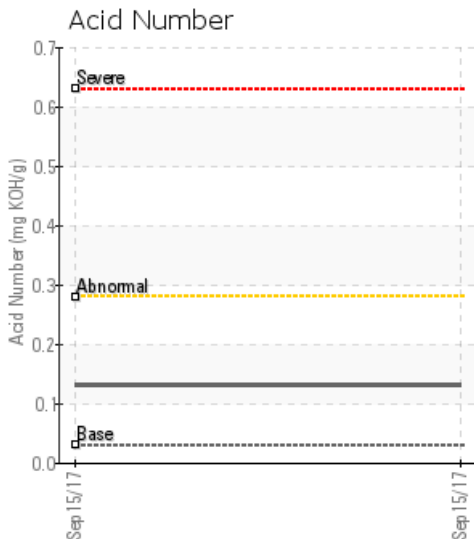
MAIN BOILER -FILTER

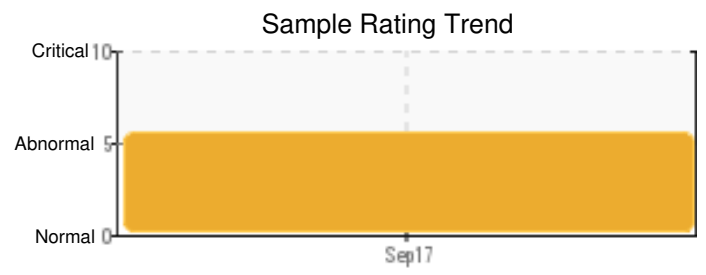
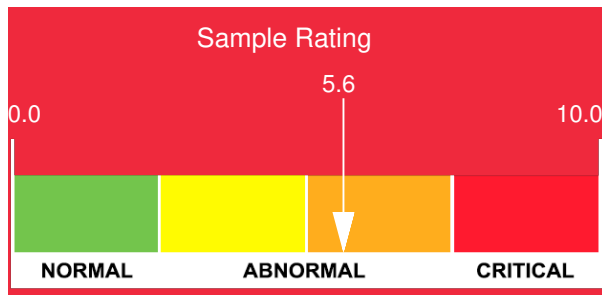
Customer: PTRHTF30025	System Information	Sample Information
MANCUSO CHEMICALS 5725 PROGRESS STREET NIAGARA FALLS, ON L2E 6X8 CANADA Attn: BOB PATEL Tel: (905)357-3626 E-Mail: bpatel@mancusochemicals.com	System Volume: 3280 ltr Bulk Operating Temp: 500F / 260C Heating Source: Blanket: Fluid: PETRO CANADA CALFLO AF Make: ARIZONA BOILER CO	Lab No: 02189825 Analyst: Adam Koscielak Sample Date: 09/15/17 Received Date: 12/22/17 Completed: 01/04/18 To discuss this report contact Adam Koscielak at 905-331-1323

Recommendation: This sample was taken from the filters on September 15th, 2017. Analysis indicates a higher level of solids than the fluid sample taken the same day. GCD data indicates the fluid condition is similar to the system sample taken the same day. A high level of water was detected in this sample, along with a higher level of iron. Acid number was also higher than the system sample at 0.13 versus 0.06. Could be indicative of the sample location.

Comments: Water contamination levels are severely high. Water contamination levels are severely high.. ppm Water contamination levels are severely high. Pentane Insolubles levels are severely high. (GCD) 90% Distillation Point is marginally high.

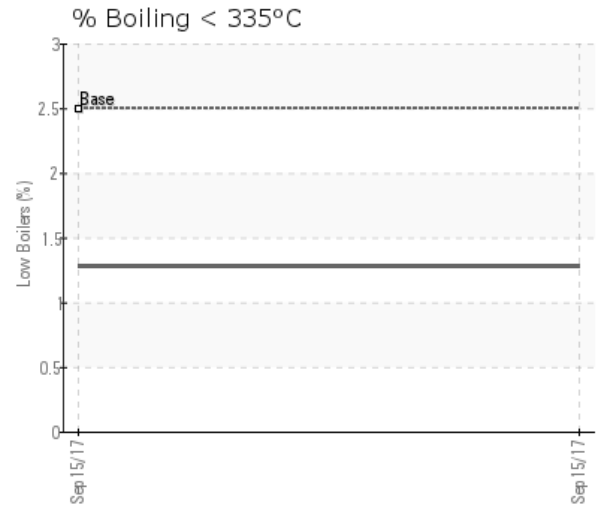
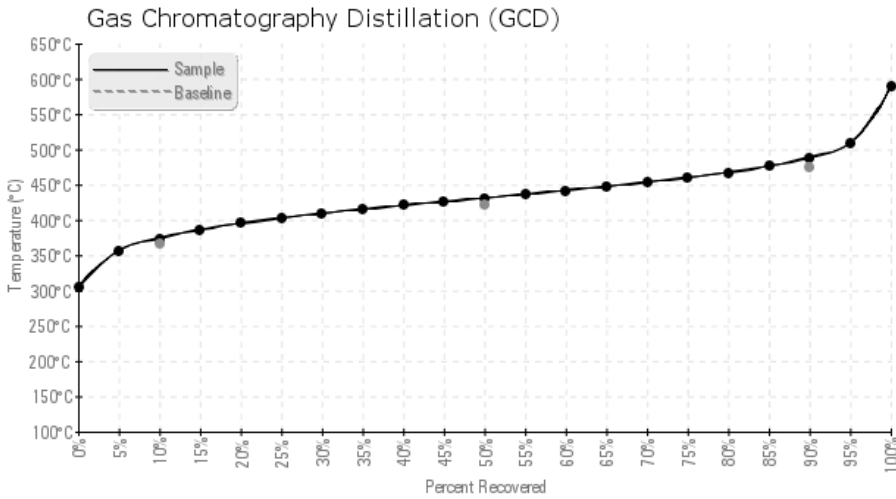
Sample Date	Received Date	Fluid Age	Sample Location	Flash Point (COC)	Water (KF)	Viscosity (40°C)	Acid Number	Solids	GCD 10%	GCD 50%	GCD 90%	GCD % < 335°C
	mm/dd/yy			°F/°C	ppm	cSt	mg/KOH/g	%wt	°F/°C	°F/°C	°F/°C	%
09/15/17	12/22/17	0y	AK171221-02	406 / 208	26515.7	35.1	0.13	0.616	705 / 374	808 / 431	911 / 489	1.28
Baseline Data				435 / 224		32.7	0.03		693 / 367	790 / 421	887 / 475	2.5





Sample Date	Iron	Chromium	Nickel	Aluminum	Copper	Lead	Tin	Cadmium	Silver	Vanadium	Silicon	Sodium	Potassium	Titanium	Molybdenum	Antimony	Manganese	Lithium	Boron	Magnesium	Calcium	Barium	Phosphorus	Zinc
09/15/17	33	0	0	0	0	0	0	1	0	0	1	10	2	0	0	1	0	0	6	1	1	0	151	0
Baseline Data			0	0						0			0	0					0				270	

Elemental analysis results (above) in parts per million (ppm). [10,000 ppm = 1.0%]



Historical Comments

Petro-Canada makes no representation or warranty of any kind, either express or implied, as to the accuracy or completeness of the analysis and assumes no responsibility and shall have no liability whatsoever with respect to such analysis, or a party's use of it. Petro-Canada is a division of HollyFrontier Corporation.