

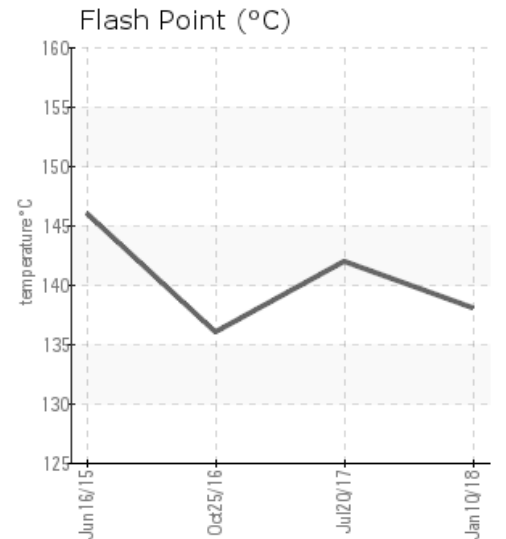
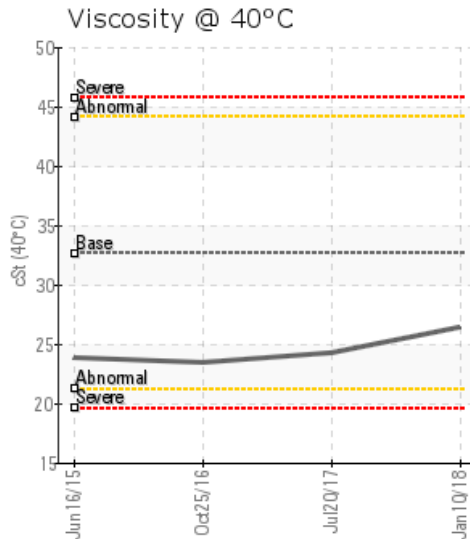
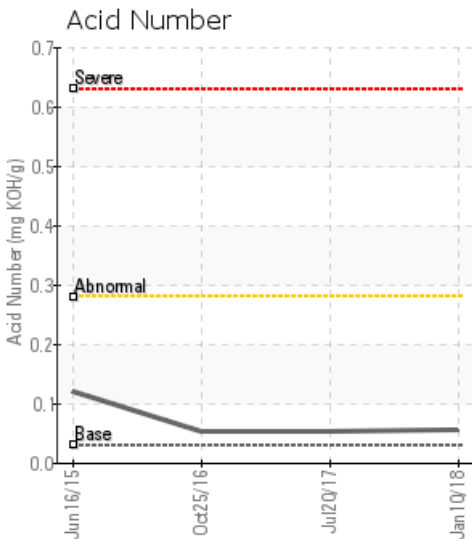
LINE 12

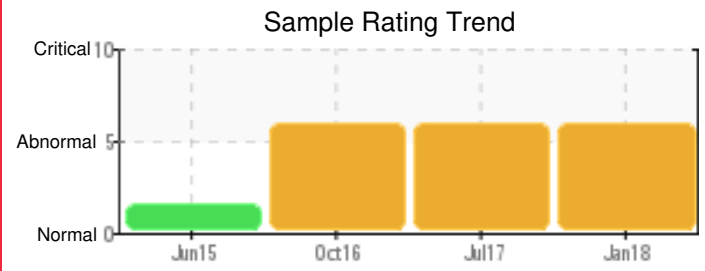
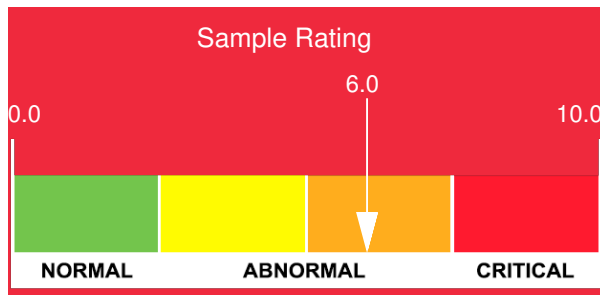
Customer: PTRHTF60002	System Information	Sample Information
BOYNE SMELTERS LTD-RIO TINTO HANDLEY DRIVE QUEENSLAND BOYNE ISLAND, QUE 4680 AUSTRALIA Attn: Simon Spencer Tel: (042)744-6575	System Volume: 0 ltr Bulk Operating Temp: 514F / 268C Heating Source: Blanket: Fluid: PETRO CANADA CALFLO AF Make:	Lab No: 02194231 Analyst: Yutong Gao Sample Date: 01/10/18 Received Date: 01/23/18 Completed: 01/25/18 To discuss this report contact Yutong Gao at (403)873-1876

Recommendation: The current fluid has the similar conditions as the 2017 and 2016 samples. The fluid has been thermal cracked with some light boiler to reduce the flash point. Please conduct the effective system venting to release the oil vapor, or just do the 30% oil change to bring back the oil flash point and viscosity. Please take one sample in 6 months to monitor.

Comments: COC Flash Point is severely low.

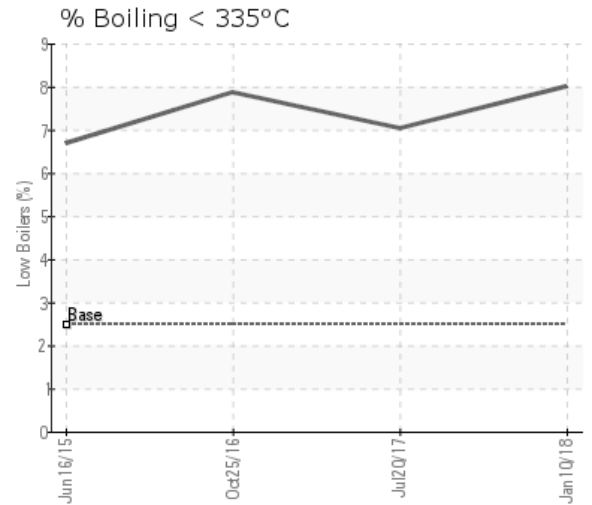
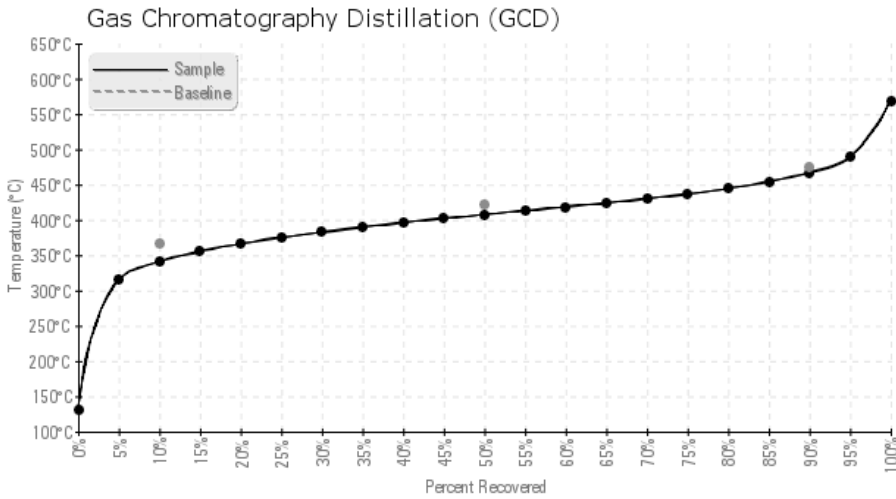
Sample Date	Received Date	Fluid Age	Sample Location	Flash Point (COC)	Water (KF)	Viscosity (40°C)	Acid Number	Solids	GCD 10%	GCD 50%	GCD 90%	GCD % < 335°C
	mm/dd/yy			°F/°C	ppm	cSt	mg/KOH/g	%wt	°F/°C	°F/°C	°F/°C	%
01/10/18	01/23/18	10y		280 / 138	2.0	26.4	0.056	0.031	645 / 341	766 / 408	873 / 467	8.01
07/20/17	09/06/17	20y	NEAR RETURN TO GAS B	288 / 142	30.9	24.2	0.052	0.035	659 / 348	790 / 421	895 / 480	7.03
10/25/16	11/04/16	10y	NEAR RTRN TO GAS BRN	277 / 136	39.4	23.4	0.052	0.054	651 / 344	790 / 421	895 / 479	7.87
06/16/15	07/02/15	15y	LINE 1/2 AFTER PUMPS	295 / 146	25.2	23.9	0.12	0.017	661 / 349	792 / 422	901 / 483	6.70
Baseline Data				435 / 224		32.7	0.03		693 / 367	790 / 421	887 / 475	2.5





Sample Date	Iron	Chromium	Nickel	Aluminum	Copper	Lead	Tin	Cadmium	Silver	Vanadium	Silicon	Sodium	Potassium	Titanium	Molybdenum	Antimony	Manganese	Lithium	Boron	Magnesium	Calcium	Barium	Phosphorus	Zinc
01/10/18	0	0	0	0	0	0	0	0	0	0	0	0	0	0	0	0	0	0	0	0	0	0	9	0
07/20/17	0	0	0	0	0	0	0	0	0	0	0	0	0	0	0	0	0	0	0	0	0	0	10	0
10/25/16	0	0	0	0	0	0	0	0	0	0	0	2	0	0	0	0	0	0	0	0	0	0	7	0
06/16/15	0	0	0	0	0	0	0	0	0	0	0	1	0	0	0	0	0	0	0	0	0	0	9	0
Baseline Data			0	0						0			0	0					0				270	

Elemental analysis results (above) in parts per million (ppm). [10,000 ppm = 1.0%]



Historical Comments

07/20/17	The fluid has a very similar condition as the sample in 2016. The fluid has normal acid number and solid content. However, the viscosity and flash point are all low because of the thermal cracking at 268C bulk working temperature. The effective system venting is required as soon as possible to release the light oil vapor. Please take one sample in one year to monitor the conditions.
10/25/16	The fluid flash point is severely low and the viscosity is abnormally low. The current fluid has a lot of low boiler (light end) due to the thermal cracking. The solid content, water ppm and TAN number are all normal. Please conduct the effective venting process as soon as possible to release the light end/oil vapor from the system. System venting is a recommended regular maintenance practice for any closed heat transfer system. If there is no way to vent the light end, please consider the complete fluid change or at least partial (i.e. 1/3 of the fluid) change to bring back the flash point and viscosity. Take one sample to verify the improvement after a longer and effective venting process or a partial fluid change.
06/16/15	The current fluid has a lot of low boiler (light end) due to the thermal cracking, therefore the flash point and the viscosity is much lower than the new fluid. The solid, water ppm and TAN number are all normal. Please conduct the effective venting process as soon as possible to release the light end/oil vapour from the system. System venting is a recommended regular maintenance practice for any closed heat transfer system. If there is no way to vent the light end, please consider the complete fluid change or at least partial (i.e. 1/3 of the fluid) change to bring back the flash point and viscosity. Take one sample to verify the improvement after a longer and effective venting or a partial fluid change. COC Flash Point is severely low. Viscosity is abnormally low.

Petro-Canada makes no representation or warranty of any kind, either express or implied, as to the accuracy or completeness of the analysis and assumes no responsibility and shall have no liability whatsoever with respect to such analysis, or a party's use of it. Petro-Canada is a division of HollyFrontier Corporation.