

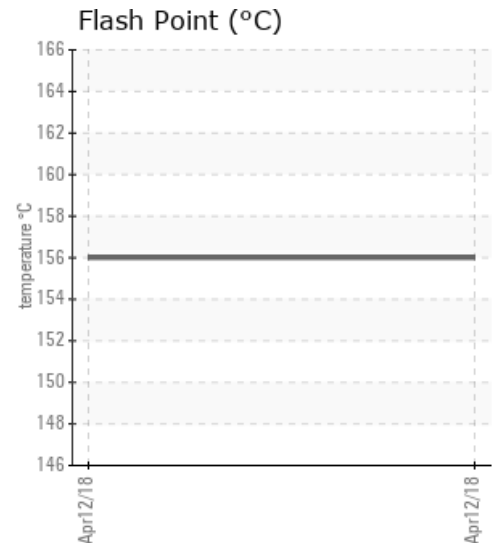
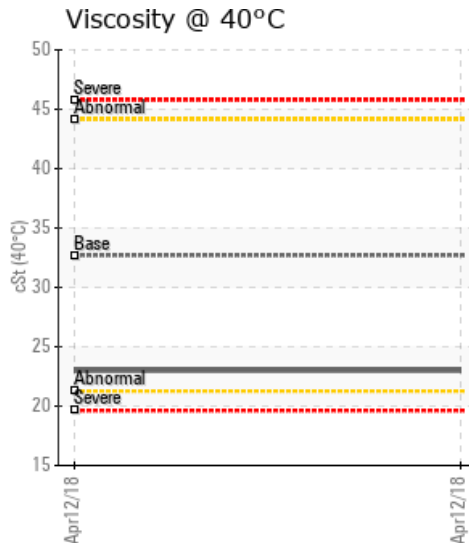
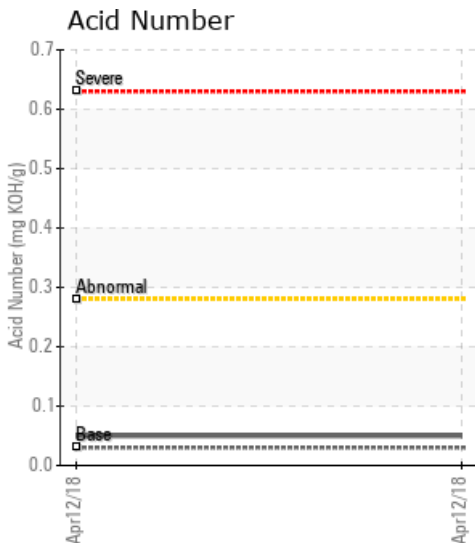
HERZ BOTTOM

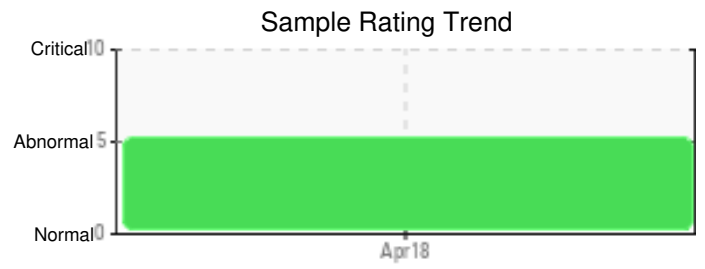
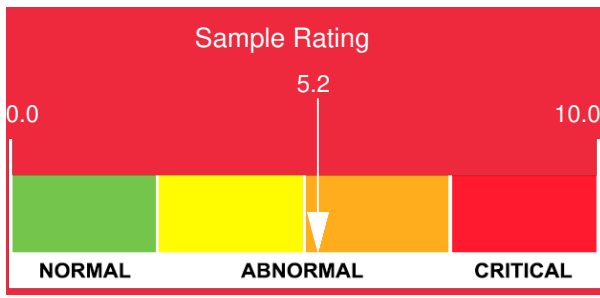
Customer: PTRHTF30095	System Information	Sample Information
HP Pelzer 115 Industrial Way Athens, TN 37303 USA Attn: Conway Tabor Tel: (423)333-9402 E-Mail: ctabor@hpelzer.com	System Volume: 0 gal Bulk Operating Temp: 425F / 218C Heating Source: Blanket: Fluid: PETRO CANADA CALFLO AF Make:	Lab No: 02211298 Analyst: Kevin Marson Sample Date: 04/12/18 Received Date: 04/20/18 Completed: 04/23/18 To discuss this report contact Kevin Marson at (905)569-8600

Recommendation:

Comments: COC Flash Point is severely low. (GCD) 90% Distillation Point is abnormally low. (GCD) % < 335°C is marginally high. (GCD) 10% Distillation Point is marginally low.

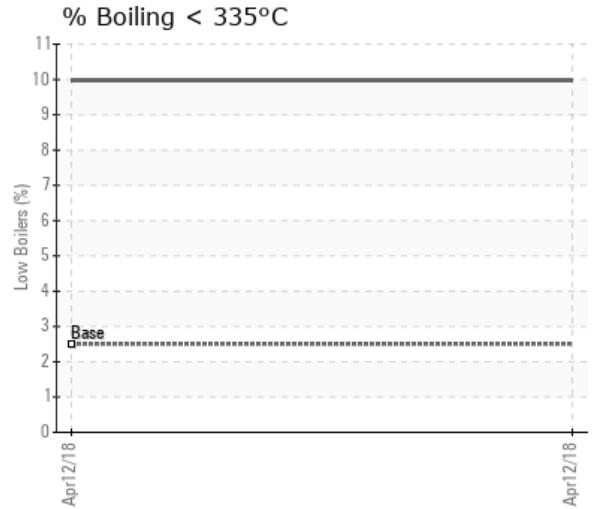
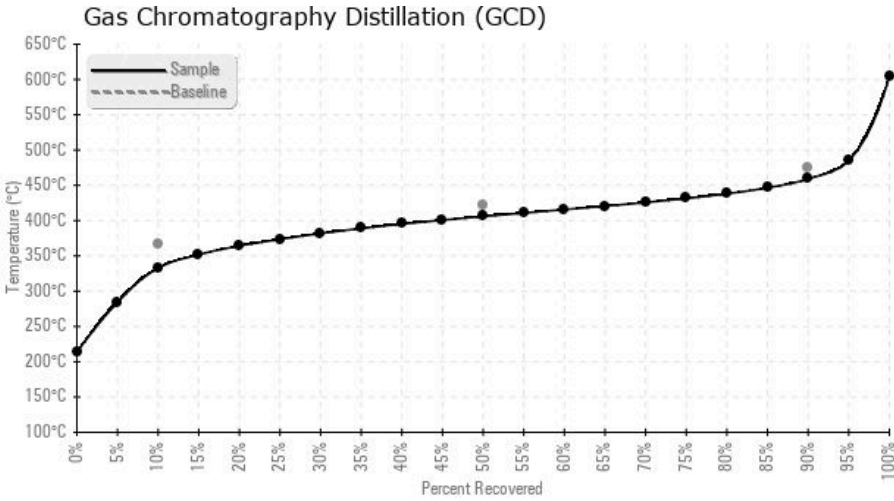
Sample Date	Received Date	Fluid Age	Sample Location	Flash Point (COC)	Water (KF)	Viscosity (40°C)	Acid Number	Solids	GCD 10%	GCD 50%	GCD 90%	GCD % < 335°C
	mm/dd/yy			°F/°C	ppm	cSt	mg/KOH/g	%wt	°F/°C	°F/°C	°F/°C	%
04/12/18	04/20/18	0m		313 / 156	12.6	23.0	0.05	0.083	631 / 333	763 / 406	858 / 459	9.98
Baseline Data				435 / 224		32.7	0.03		693 / 367	790 / 421	887 / 475	2.5





Sample Date	Iron	Chromium	Nickel	Aluminum	Copper	Lead	Tin	Cadmium	Silver	Vanadium	Silicon	Sodium	Potassium	Titanium	Molybdenum	Antimony	Manganese	Lithium	Boron	Magnesium	Calcium	Barium	Phosphorus	Zinc
04/12/18	5	0	0	0	1	0	1	0	0	0	0	2	0	0	0	0	0	0	0	0	0	0	60	1
Baseline Data			0	0						0			0	0					0				270	

Elemental analysis results (above) in parts per million (ppm). [10,000 ppm = 1.0%]



Historical Comments
