

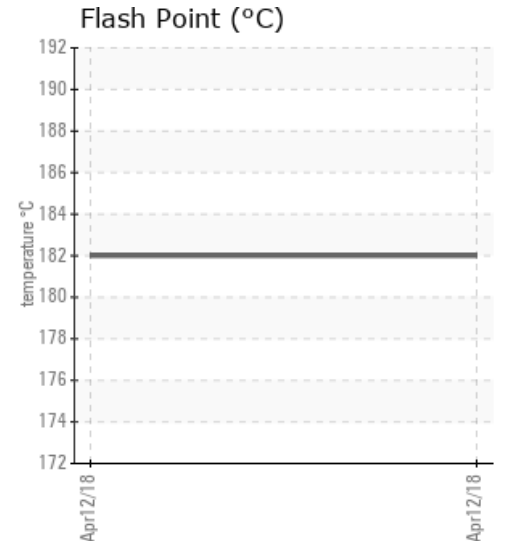
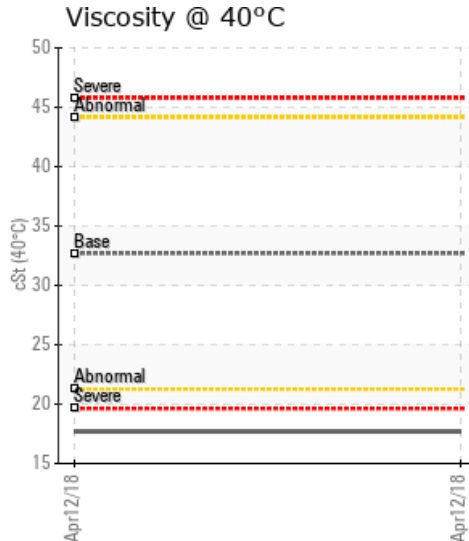
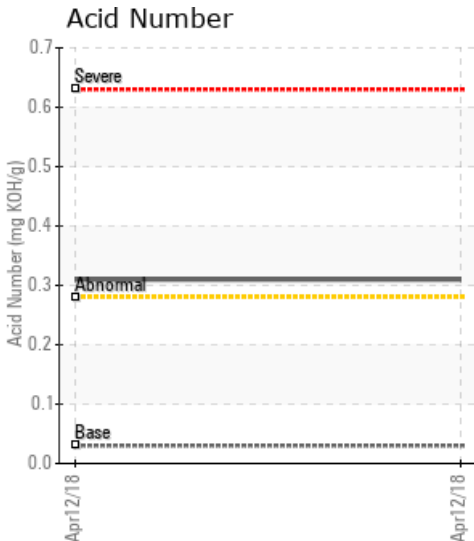
LWF #4

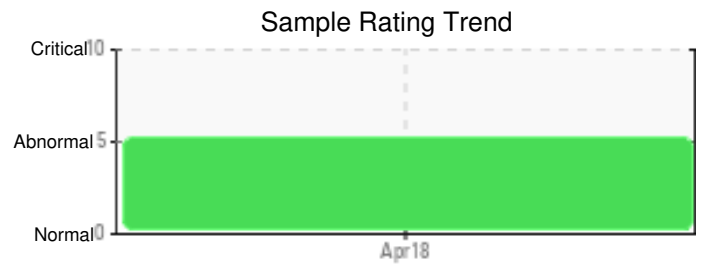
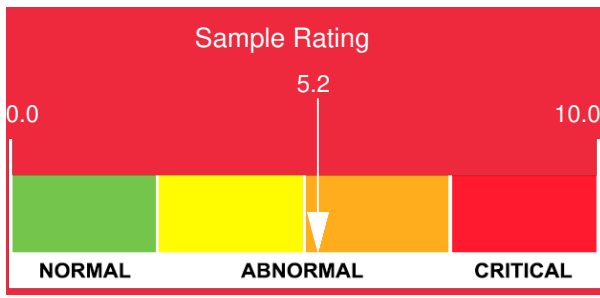
| Customer: PTRHTF30095 | System Information | Sample Information |
|---|---|---|
| HP Pelzer 115 Industrial Way Athens, TN 37303 USA Attn: Conway Tabor Tel: (423)333-9402 E-Mail: ctabor@hpelzer.com | System Volume: 0 gal Bulk Operating Temp: 425F / 218C Heating Source: Blanket: Fluid: PETRO CANADA CALFLO AF Make: | Lab No: 02211303 Analyst: Manny Garcia Sample Date: 04/12/18 Received Date: 04/20/18 Completed: 04/26/18 To discuss this report contact Manny Garcia at 954-384-7259 |

Recommendation: This system may be a candidate for a system drain, flush and re-fill with new Petro-Canada Calflo AF heat transfer fluid for proper and safe operation of your unit. Please include the age of the fluid and the age of the unit on next year's used fluid sample. This allows for us to better interpret the results.

Comments: Iron ppm levels are abnormal. Pentane Insolubles levels are severely high. Visc @ 40°C is severely low 17.7 cSt @ 40oC . Acid Number (AN) is abnormally high (0.31). COC Flash Point is marginally low by 42oC.

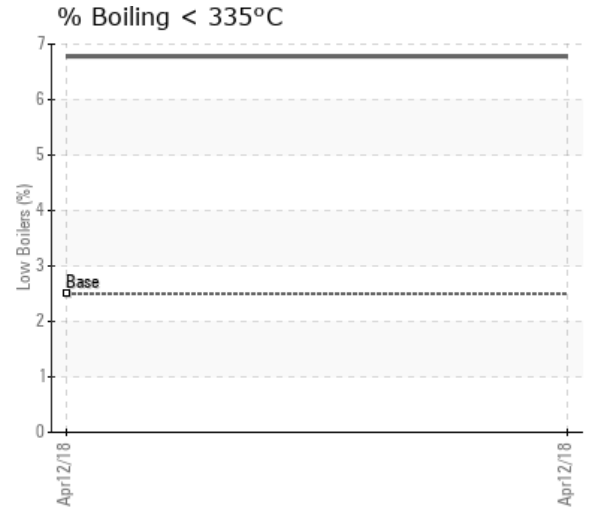
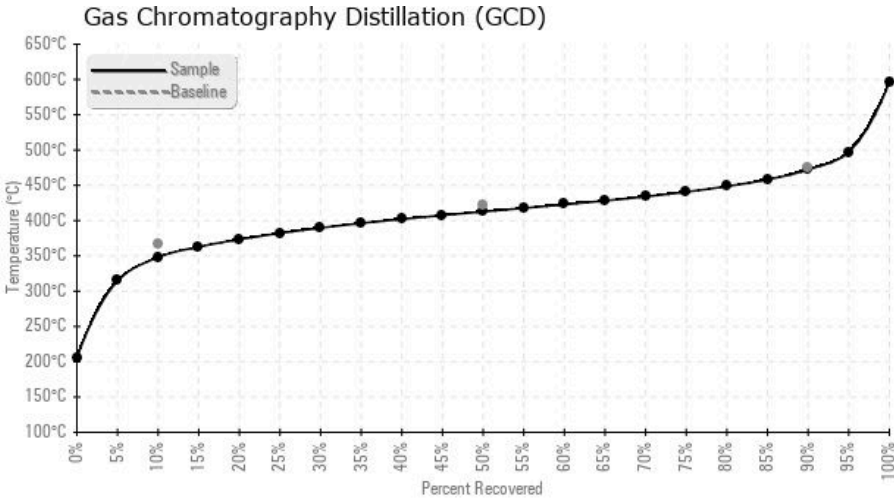
| Sample Date | Received Date | Fluid Age | Sample Location | Flash Point (COC) | Water (KF) | Viscosity (40°C) | Acid Number | Solids | GCD 10% | GCD 50% | GCD 90% | GCD % < 335°C |
|---------------|---------------|-----------|-----------------|-------------------|------------|------------------|-------------|--------|-----------|-----------|-----------|---------------|
| | mm/dd/yy | | | °F/°C | ppm | cSt | mg/KOH/g | %wt | °F/°C | °F/°C | °F/°C | % |
| 04/12/18 | 04/20/18 | 0m | | 360 / 182 | 64.9 | 17.7 | 0.31 | 1.27 | 658 / 348 | 775 / 413 | 882 / 472 | 6.78 |
| Baseline Data | | | | 435 / 224 | | 32.7 | 0.03 | | 693 / 367 | 790 / 421 | 887 / 475 | 2.5 |





| Sample Date | Iron | Chromium | Nickel | Aluminum | Copper | Lead | Tin | Cadmium | Silver | Vanadium | Silicon | Sodium | Potassium | Titanium | Molybdenum | Antimony | Manganese | Lithium | Boron | Magnesium | Calcium | Barium | Phosphorus | Zinc |
|---------------|------|----------|--------|----------|--------|------|-----|---------|--------|----------|---------|--------|-----------|----------|------------|----------|-----------|---------|-------|-----------|---------|--------|------------|------|
| 04/12/18 | 202 | 0 | 0 | 0 | 13 | 2 | 1 | 1 | 0 | 0 | 8 | 2 | 0 | 0 | 0 | 0 | 1 | 0 | 0 | 0 | 1 | 0 | 185 | 21 |
| Baseline Data | | | 0 | 0 | | | | | | 0 | | | 0 | 0 | | | | | 0 | | | | 270 | |

Elemental analysis results (above) in parts per million (ppm). [10,000 ppm = 1.0%]



Historical Comments

| |
|--|
| |
| |
| |
| |
| |

Petro-Canada makes no representation or warranty of any kind, either express or implied, as to the accuracy or completeness of the analysis and assumes no responsibility and shall have no liability whatsoever with respect to such analysis, or a party's use of it. Petro-Canada is a division of HollyFrontier Corporation.