

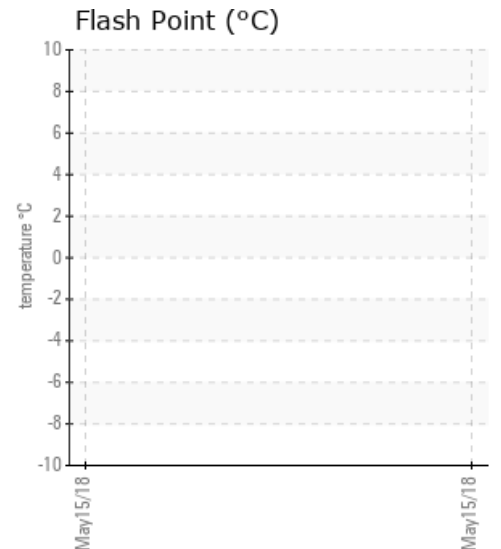
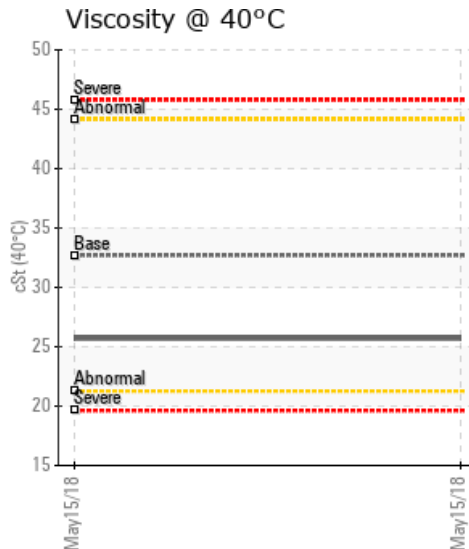
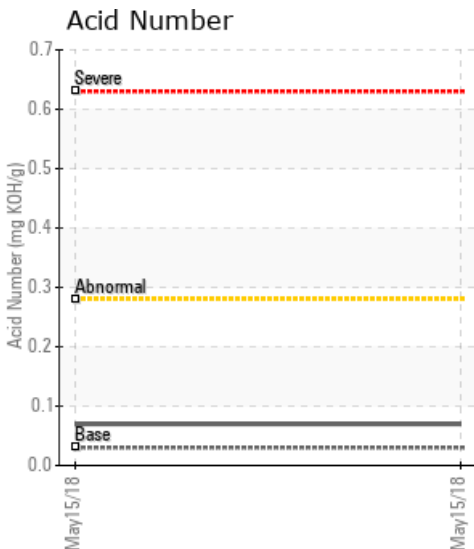
## NEW SYSTEM

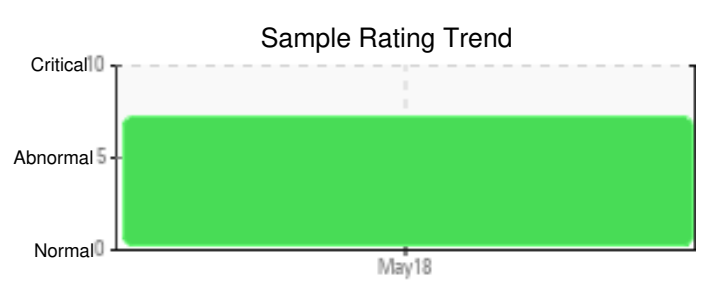
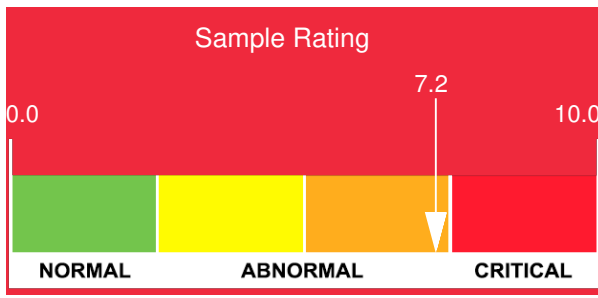
Customer: PTRHTF30115	System Information	Sample Information
BI-AX INTERNATIONAL INC 596 CEDAR ST WINGHAM, ON N0G 2W0 Canada Attn: Tel: (519)357-1818 E-Mail:	System Volume: 400 ltr Bulk Operating Temp: Not Specified Heating Source: Blanket: Fluid: PETRO CANADA CALFLO AF Make:	Lab No: 02216883 Analyst: Lynn Billings Sample Date: 05/15/18 Received Date: 05/17/18 Completed: 05/25/18 To discuss this report contact Lynn Billings at (289)523-0262

Recommendation: this samples exhibits a large amount of water (4.5%). It is also an ISO 22 which Petro-Canada does not carry. It has more iron and sulfur than the other sample. The GCD is marginally high and the 10% distillation point is low. This fluid should be removed from the system and the system should be drained, cleaned and flushed before addition of new fluid.

Comments: Water contamination levels are severely high. Water contamination levels are severely high.. ppm Water contamination levels are severely high. Insufficient sample was received to conduct all the routine laboratory tests. (GCD) % < 335°C is marginally high. (GCD) 10% Distillation Point is marginally low.

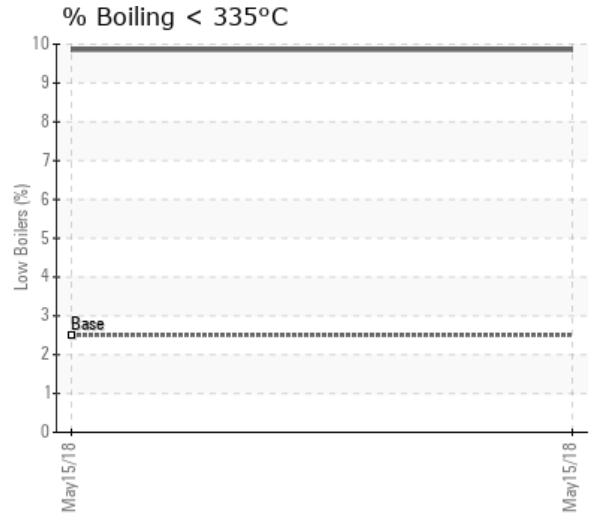
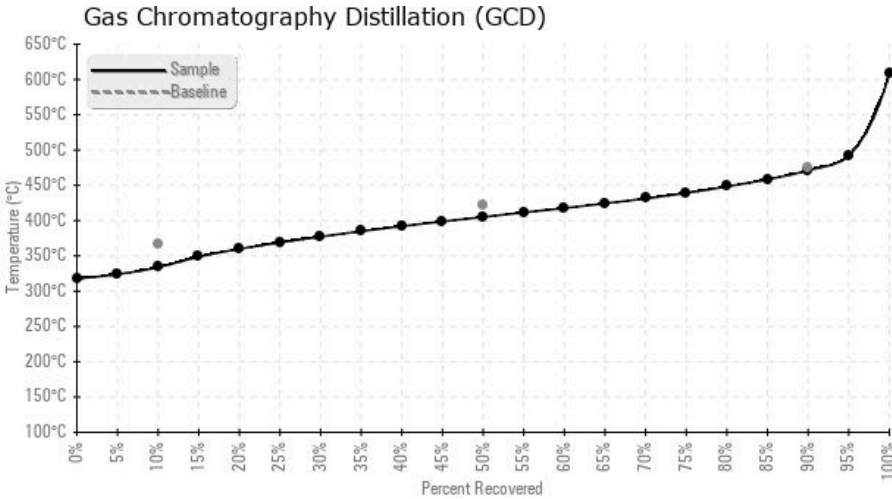
Sample Date	Received Date	Fluid Age	Sample Location	Flash Point (COC)	Water (KF)	Viscosity (40°C)	Acid Number	Solids	GCD 10%	GCD 50%	GCD 90%	GCD % < 335°C
	mm/dd/yy			°F/°C	ppm	cSt	mg/KOH/g	%wt	°F/°C	°F/°C	°F/°C	%
05/15/18	05/17/18	0h			44692.8	25.7	0.07		633 / 334	761 / 405	880 / 471	9.86
Baseline Data				435 / 224		32.7	0.03		693 / 367	790 / 421	887 / 475	2.5





Sample Date	Iron	Chromium	Nickel	Aluminum	Copper	Lead	Tin	Cadmium	Silver	Vanadium	Silicon	Sodium	Potassium	Titanium	Molybdenum	Antimony	Manganese	Lithium	Boron	Magnesium	Calcium	Barium	Phosphorus	Zinc	
05/15/18	164	0	1	0	6	2	0	22	0	0	6	4	4	0	0	1	2	0	3	4	22	0	237	9	
<b>Baseline Data</b>			0	0						0			0	0					0					270	

Elemental analysis results (above) in parts per million (ppm). [10,000 ppm = 1.0%]



### Historical Comments
