

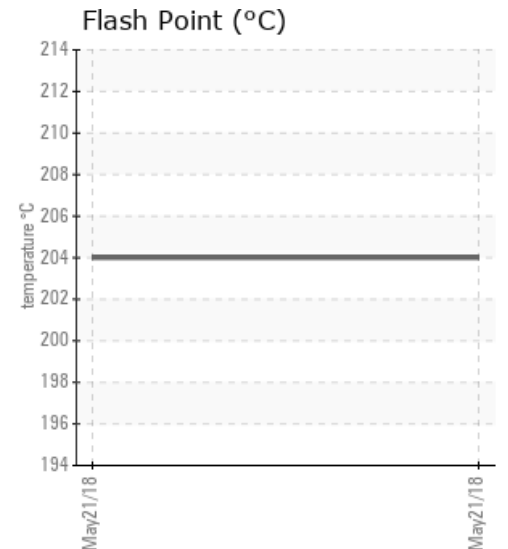
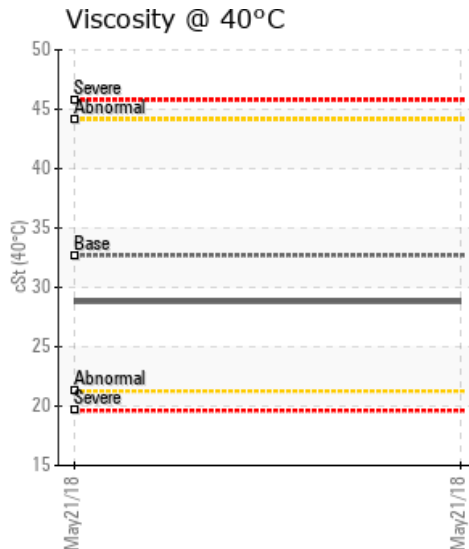
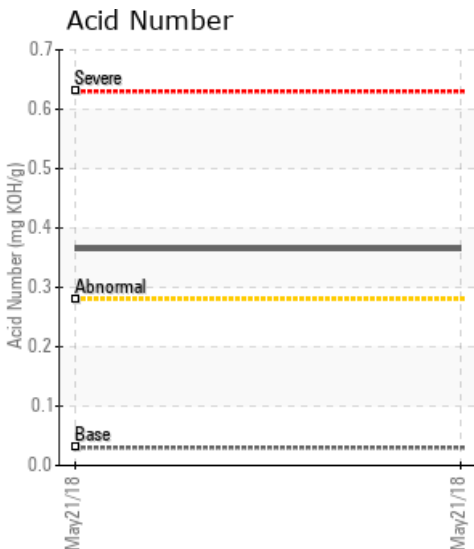
## [DRAIN ON TANK] HE-104

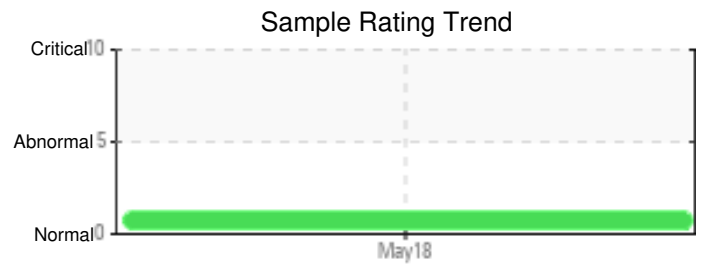
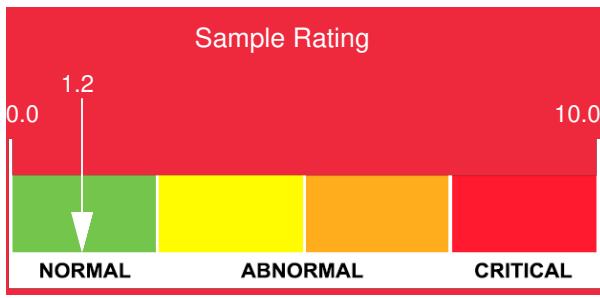
Customer: PTRHTF10177	System Information	Sample Information
Materia Inc 7629 State Hwy 75 South Huntsville, TX 77340 USA Attn: Kenny Nelson Tel: (936)295-4040 E-Mail: knelson@materia-inc.com	System Volume: 0 gal Bulk Operating Temp: 302F / 150C Heating Source: Blanket: Fluid: PETRO CANADA CALFLO AF Make:	Lab No: 02220693 Analyst: Frank Hayes Sample Date: 05/21/18 Received Date: 06/06/18 Completed: 07/23/18 To discuss this report contact Frank Hayes at (713)981-6464

Recommendation: Total Acid Number is high without any other properties supporting a symptom with the fluid. Look for possible system contamination and resample in 6 months.

Comments: Acid Number (AN) is abnormally high.

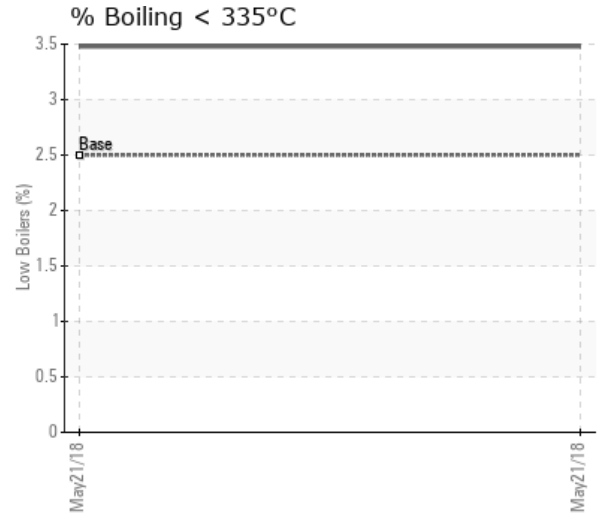
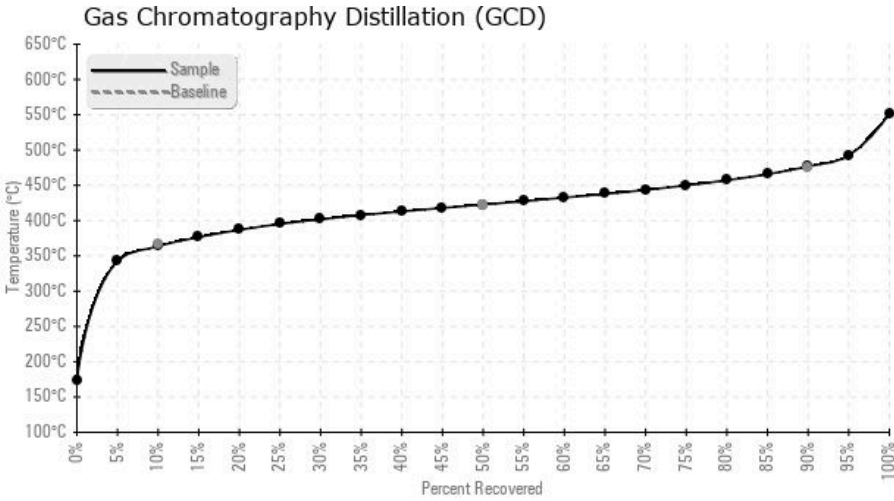
Sample Date	Received Date	Fluid Age	Sample Location	Flash Point (COC)	Water (KF)	Viscosity (40°C)	Acid Number	Solids	GCD 10%	GCD 50%	GCD 90%	GCD % < 335°C
	mm/dd/yy			°F/°C	ppm	cSt	mg/KOH/g	%wt	°F/°C	°F/°C	°F/°C	%
05/21/18	06/06/18	0h		399 / 204	9.0	28.8	0.365	0.084	686 / 364	793 / 423	890 / 477	3.48
Baseline Data				435 / 224		32.7	0.03		693 / 367	790 / 421	887 / 475	2.5





Sample Date	Iron	Chromium	Nickel	Aluminum	Copper	Lead	Tin	Cadmium	Silver	Vanadium	Silicon	Sodium	Potassium	Titanium	Molybdenum	Antimony	Manganese	Lithium	Boron	Magnesium	Calcium	Barium	Phosphorus	Zinc
05/21/18	0	0	0	0	0	0	0	0	0	0	1	0	1	0	0	0	0	0	0	0	0	0	233	0
<b>Baseline Data</b>			0	0						0			0	0					0				270	

Elemental analysis results (above) in parts per million (ppm). [10,000 ppm = 1.0%]



### Historical Comments
