

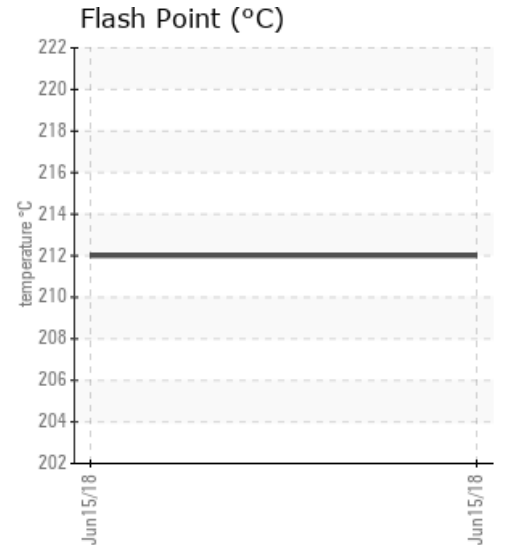
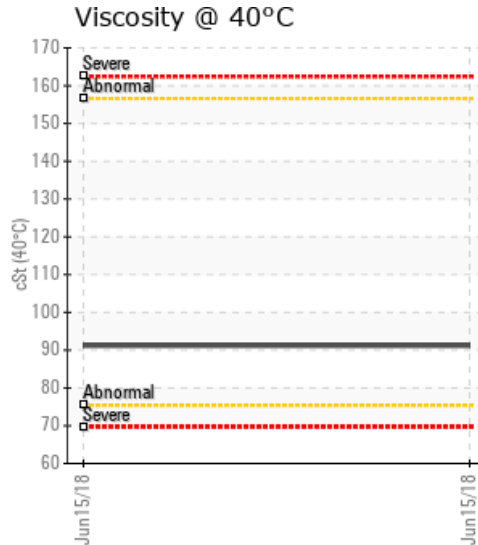
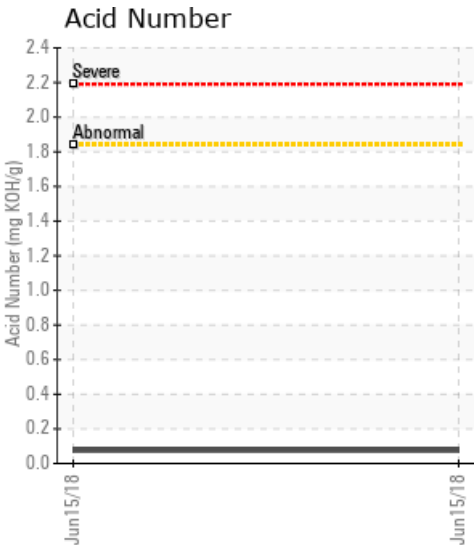
[LANXESS SCARBUROUGH-ON] HOT OIL

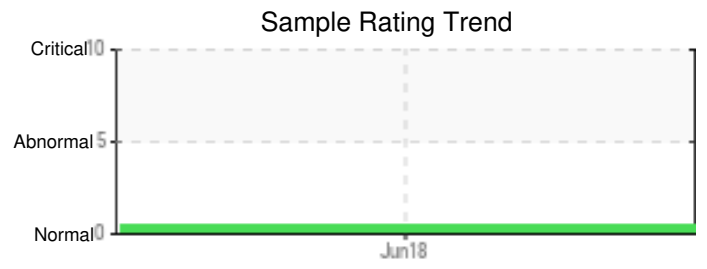
Customer: PTRHTF30117	System Information	Sample Information
LANXESS 565 CORONATION DR SCARBOROUGH, ON M1E 2K3 Canada Attn: Walter Rodriguez Tel: (416)724-3632 E-Mail: walter.rodriguez@lanxess.com	System Volume: 12000 ltr Bulk Operating Temp: 480F / 249C Heating Source: Blanket: Fluid: N/A Make:	Lab No: 02223629 Analyst: Behshad Sabah Sample Date: 06/15/18 Received Date: 06/21/18 Completed: 08/21/18 Behshad Sabah behshad.sabah@petrocanadalsp.com

Recommendation: KV@40C is normally 108 cSt, they have 92. Flash pt is typical 270C; they have 212, that is a huge drop. These results has been discussed at the plant

Comments: COC Flash Point is marginally low.

Sample Date	Received Date	Fluid Age	Sample Location	Flash Point (COC)	Water (KF)	Viscosity (40°C)	Acid Number	Solids	GCD 10%	GCD 50%	GCD 90%	GCD % < 335°C
	mm/dd/yy			°F/°C	ppm	cSt	mg/KOH/g	%wt	°F/°C	°F/°C	°F/°C	%
06/15/18	06/21/18	25y		414 / 212	28.0	91.2	0.075	0.156	787 / 420	912 / 489	1014 / 546	2.67
Baseline Data				32 / 0								

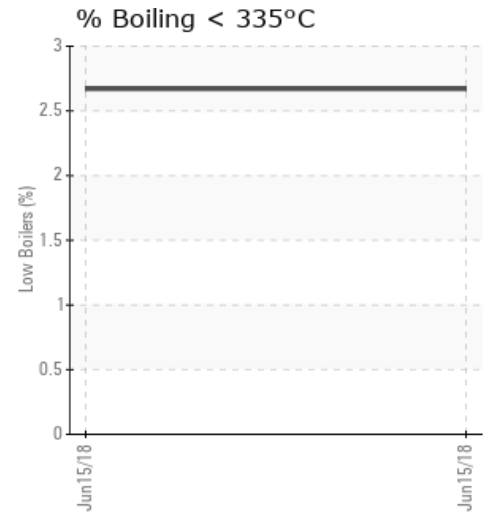
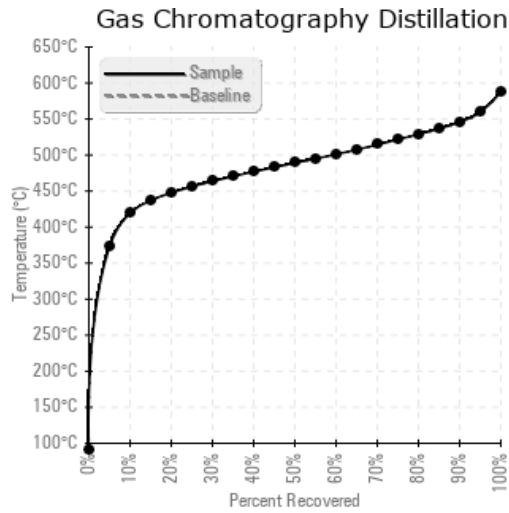




Sample Date	Iron	Chromium	Nickel	Aluminum	Copper	Lead	Tin	Cadmium	Silver	Vanadium	Silicon	Sodium	Potassium	Titanium	Molybdenum	Antimony	Manganese	Lithium	Boron	Magnesium	Calcium	Barium	Phosphorus	Zinc
06/15/18	111	0	0	0	0	0	0	0	0	0	2	1	0	0	0	0	2	0	0	3	25	0	0	0
Baseline Data													0						0				0	

Elemental analysis results (above) in parts per million (ppm). [10,000 ppm = 1.0%]

GCD Spectrum



Historical Comments

Petro-Canada makes no representation or warranty of any kind, either express or implied, as to the accuracy or completeness of the analysis and assumes no responsibility and shall have no liability whatsoever with respect to such analysis, or a party's use of it. Petro-Canada is a division of HollyFrontier Corporation.