

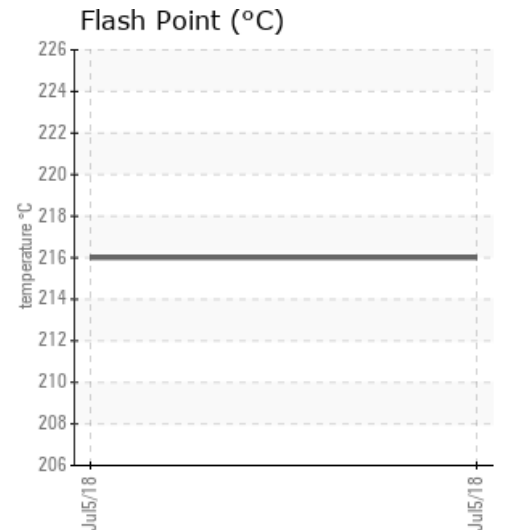
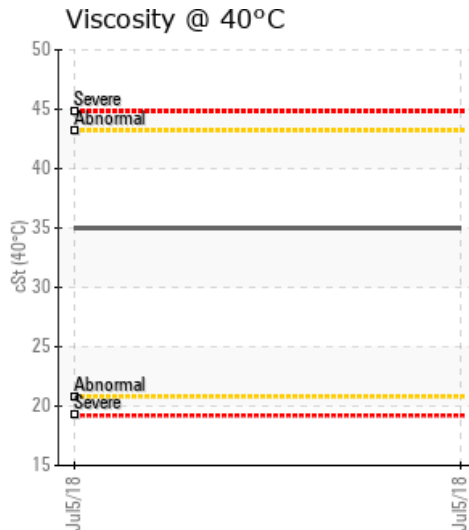
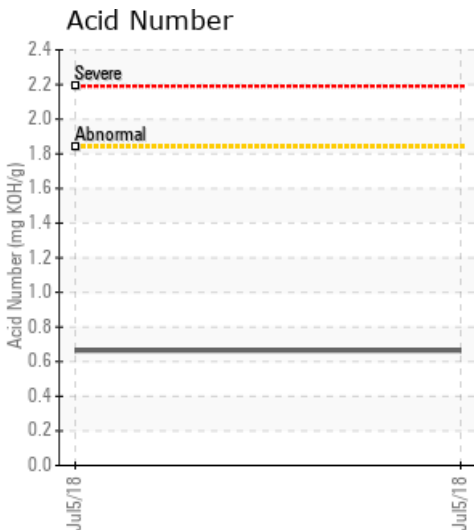
## [JOHN GARDNER / IRWINDALE] RUBBER PLANT #2

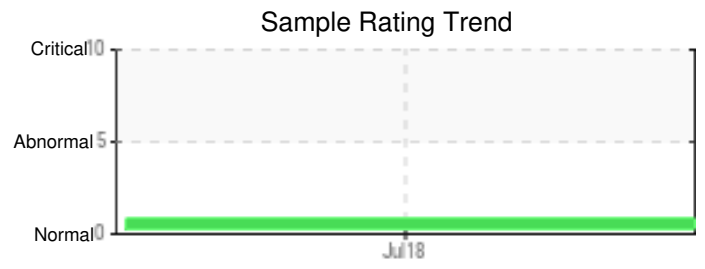
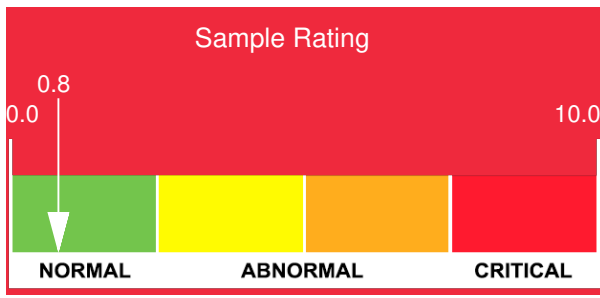
Customer: PTRHTF10198	System Information	Sample Information
ALL AMERICAN ASPHALT 400 EAST SIXTH STREET CORONA, CA 92878-2229 USA Attn: TIMOTHY BALLON Tel: E-Mail: tballon@allamericanasphalt.com	System Volume: 650 gal Bulk Operating Temp: 550F / 288C Heating Source: Blanket: Fluid: N/A Make: CEI	Lab No: 02230159 Analyst: Steven Slanker Sample Date: 07/05/18 Received Date: 07/24/18 Completed: 08/15/18 To discuss this report contact Steven Slanker at (951)225-2115

Recommendation: Pentane insoluble are high with sediment. Recommend filtering out the insoluble and sediment.

Comments: Pentane Insolubles levels are abnormally high.

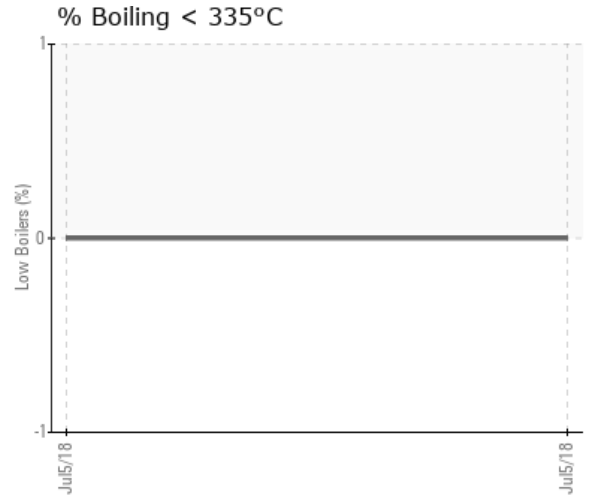
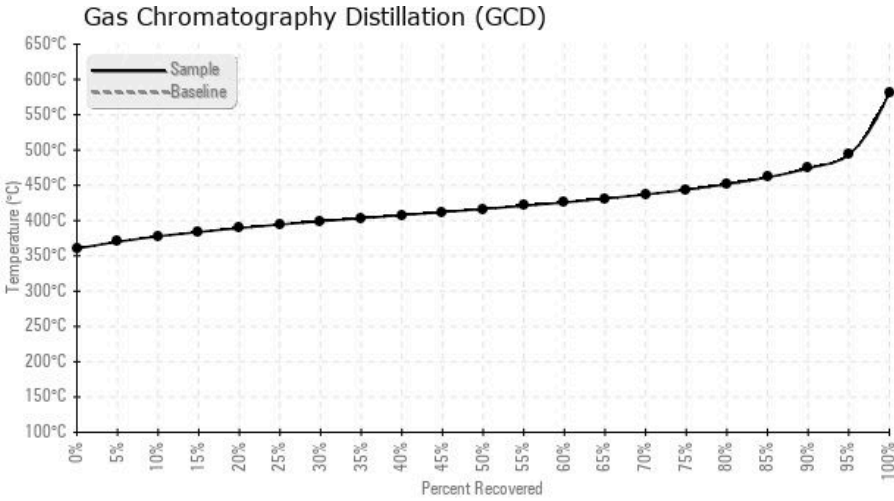
Sample Date	Received Date	Fluid Age	Sample Location	Flash Point (COC)	Water (KF)	Viscosity (40°C)	Acid Number	Solids	GCD 10%	GCD 50%	GCD 90%	GCD % < 335°C
	mm/dd/yy			°F/°C	ppm	cSt	mg/KOH/g	%wt	°F/°C	°F/°C	°F/°C	%
07/05/18	07/24/18	0h		421 / 216	30.1	35.0	0.664	0.530	712 / 378	782 / 416	885 / 474	0.00
Baseline Data				32 / 0								





Sample Date	Iron	Chromium	Nickel	Aluminum	Copper	Lead	Tin	Cadmium	Silver	Vanadium	Silicon	Sodium	Potassium	Titanium	Molybdenum	Antimony	Manganese	Lithium	Boron	Magnesium	Calcium	Barium	Phosphorus	Zinc
07/05/18	13	0	0	0	0	0	0	0	0	0	3	0	0	0	0	0	0	0	0	1	0	0	139	1
<b>Baseline Data</b>													0						0				0	

Elemental analysis results (above) in parts per million (ppm). [10,000 ppm = 1.0%]



### Historical Comments


Petro-Canada makes no representation or warranty of any kind, either express or implied, as to the accuracy or completeness of the analysis and assumes no responsibility and shall have no liability whatsoever with respect to such analysis, or a party's use of it. Petro-Canada is a division of HollyFrontier Corporation.