

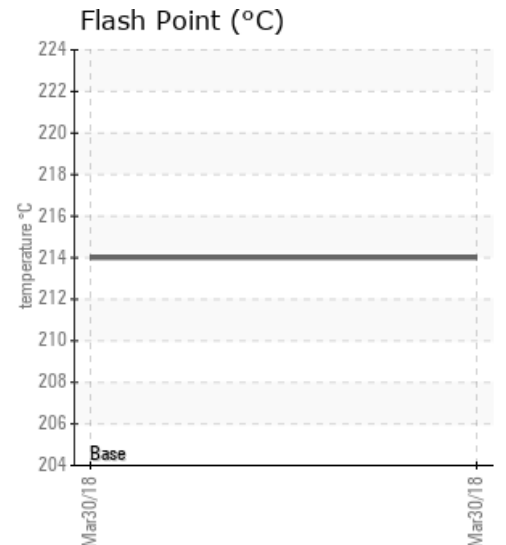
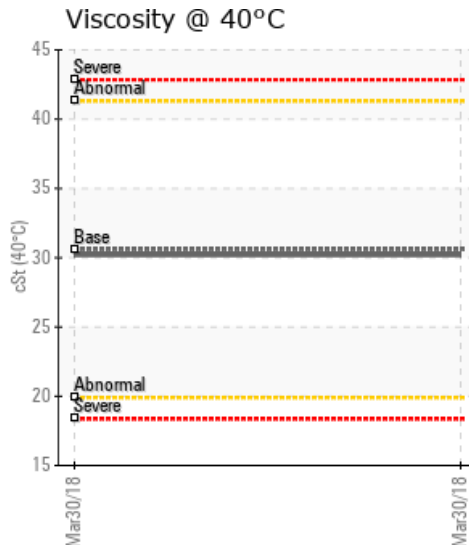
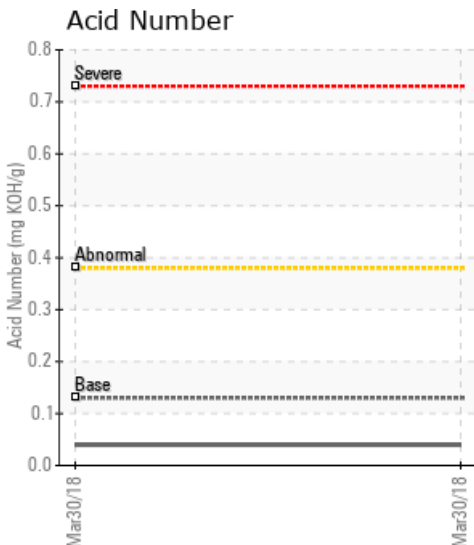
[INNOSPEC HIGH POINT] R6

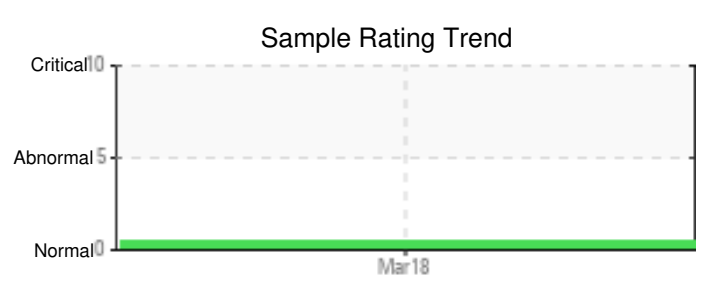
| Customer: PTRHTF10201 | System Information | Sample Information |
|---|--|---|
| INNOSPEC PERFORMANCE CHEMICALS 510 W.GRIMES AVE HIGH POINT, NC 27260 USA Attn: Mike Daniel Tel: (336)862-1366 E-Mail: mike.daniel@innospecinc.com | System Volume: 0 gal Bulk Operating Temp: Not Specified Heating Source: Blanket: Fluid: MOBIL MOBILTHERM 43 Make: | Lab No: 02232404 Analyst: Manny Garcia Sample Date: 03/30/18 Received Date: 08/07/18 Completed: 08/20/18 To discuss this report contact Manny Garcia at 954-384-7259 |

Recommendation: Fluid is suitable for continued use. Petro-Canada Petro-Therm Fluid may be used for any top-ups if necessary. Please re-submit next sample in April 2019.

Comments: Fluid was found to have some very light debris. Change any system filters and/or filter the fluid with a portable on-line filtration unit safely during any system shutdowns.

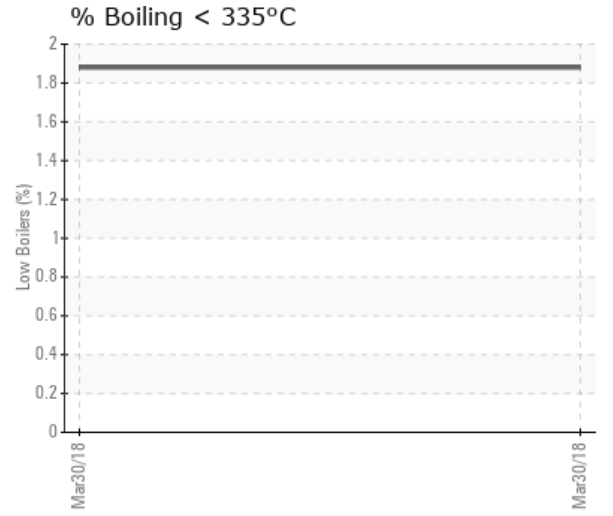
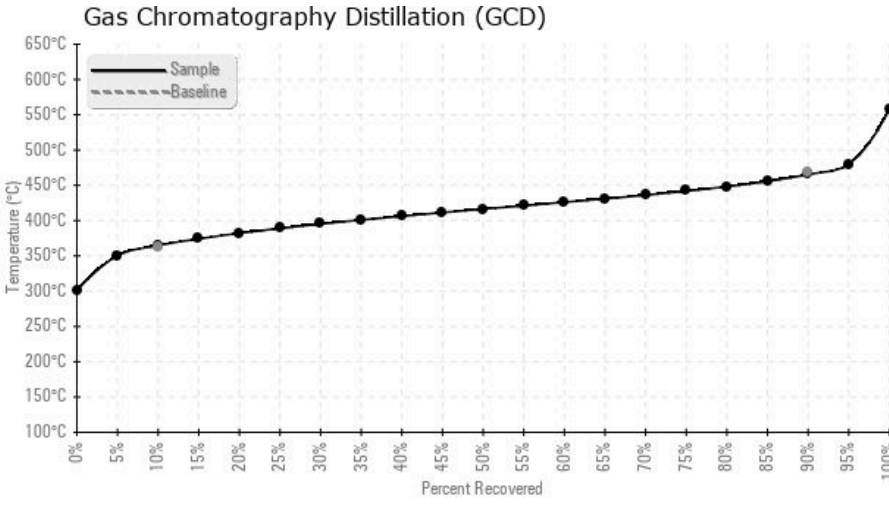
| Sample Date | Received Date | Fluid Age | Sample Location | Flash Point (COC) | Water (KF) | Viscosity (40°C) | Acid Number | Solids | GCD 10% | GCD 50% | GCD 90% | GCD % < 335°C |
|---------------|---------------|-----------|------------------|-------------------|------------|------------------|-------------|--------|-----------|-----------|-----------|---------------|
| | mm/dd/yy | | | °F/°C | ppm | cSt | mg/KOH/g | %wt | °F/°C | °F/°C | °F/°C | % |
| 03/30/18 | 08/07/18 | 0h | HON ON CONTAINER | 417 / 214 | 29.4 | 30.2 | 0.04 | 0.054 | 688 / 365 | 782 / 416 | 870 / 466 | 1.88 |
| Baseline Data | | | | 388 / 198 | | 30.6 | 0.13 | | 685 / 363 | | 876 / 469 | |





| Sample Date | Iron | Chromium | Nickel | Aluminum | Copper | Lead | Tin | Cadmium | Silver | Vanadium | Silicon | Sodium | Potassium | Titanium | Molybdenum | Antimony | Manganese | Lithium | Boron | Magnesium | Calcium | Barium | Phosphorus | Zinc |
|----------------------|------|----------|--------|----------|--------|------|-----|---------|--------|----------|---------|--------|-----------|----------|------------|----------|-----------|---------|-------|-----------|---------|--------|------------|------|
| 03/30/18 | 0 | 0 | 0 | 0 | 0 | 0 | 0 | 0 | 0 | 0 | 0 | 0 | 0 | 0 | 0 | 0 | 0 | 0 | 0 | 0 | 0 | 0 | 1 | 0 |
| Baseline Data | | | 0 | 0 | | | | | | 0 | | | 0 | 0 | | | | | 0 | | | | 0 | |

Elemental analysis results (above) in parts per million (ppm). [10,000 ppm = 1.0%]



Historical Comments

| |
|--|
| |
| |
| |
| |
| |

Petro-Canada makes no representation or warranty of any kind, either express or implied, as to the accuracy or completeness of the analysis and assumes no responsibility and shall have no liability whatsoever with respect to such analysis, or a party's use of it. Petro-Canada is a division of HollyFrontier Corporation.