

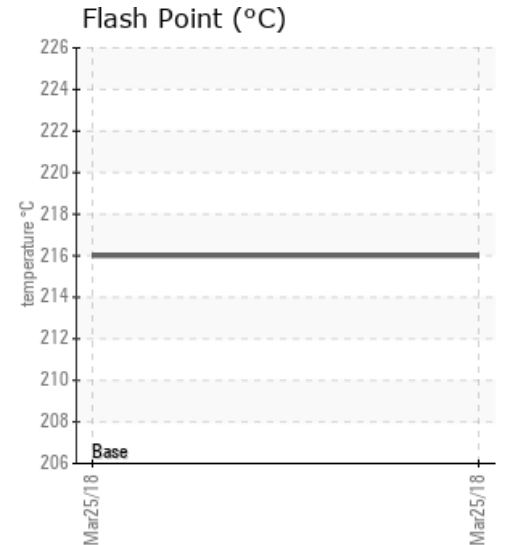
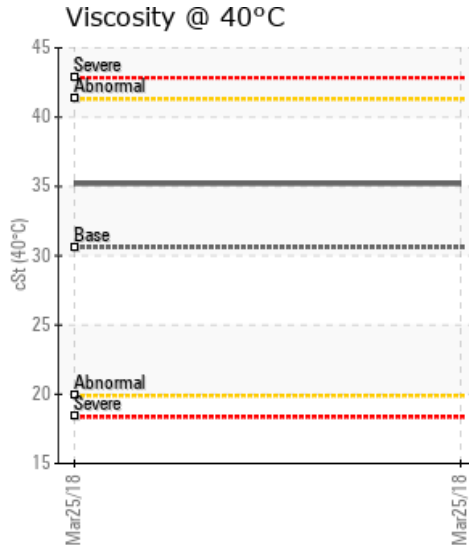
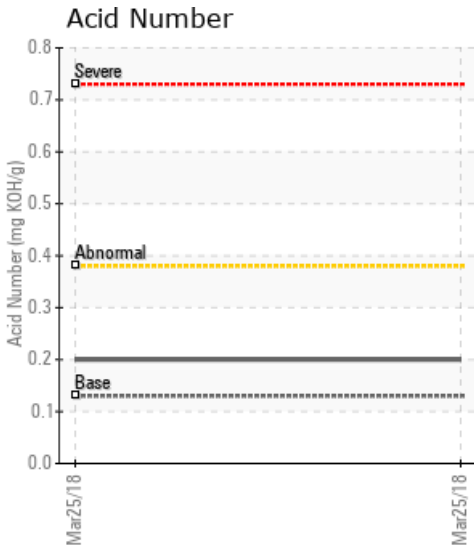
## [INNOSPEC HIGH POINT] R4&7

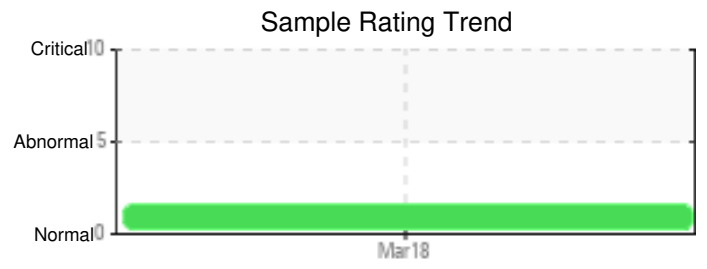
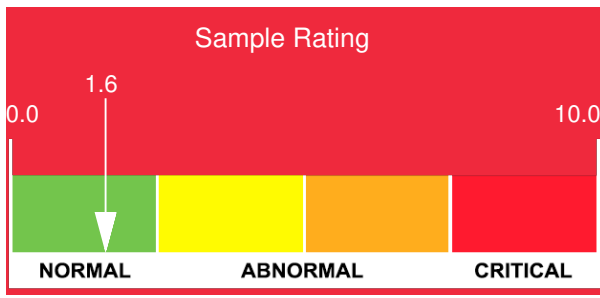
Customer: PTRHTF10201	System Information	Sample Information
<b>INNOSPEC PERFORMANCE CHEMICALS</b> 510 W.GRIMES AVE HIGH POINT, NC 27260 USA Attn: Mike Daniel Tel: (336)862-1366 E-Mail: mike.daniel@innospecinc.com	System Volume: 0 gal Bulk Operating Temp: Not Specified Heating Source: Blanket: Fluid: MOBIL MOBILTHERM 43 Make:	Lab No: 02232405 Analyst: Manny Garcia Sample Date: 03/25/18 Received Date: 08/07/18 Completed: 08/20/18 To discuss this report contact Manny Garcia at 954-384-7259

Recommendation: Fluid is suitable for continued use. Petro-Canada's Petro-Therm may be used as top up oil or the fluid of choice if this system gets changed out. Please include the time on the oil and the system volume during April 2019's sample

Comments: Pentane Insolubles levels are severely high.

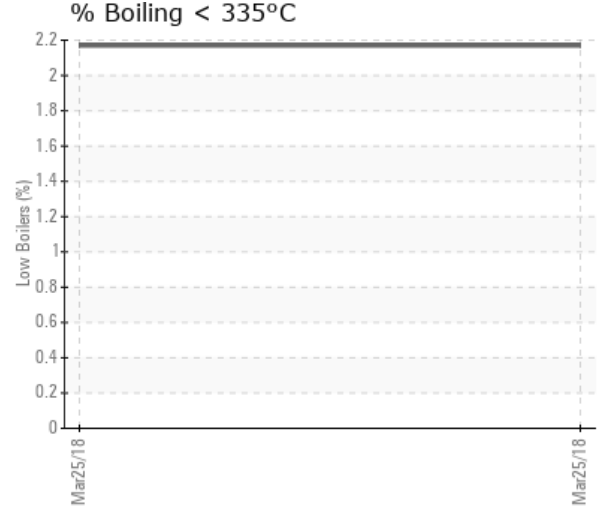
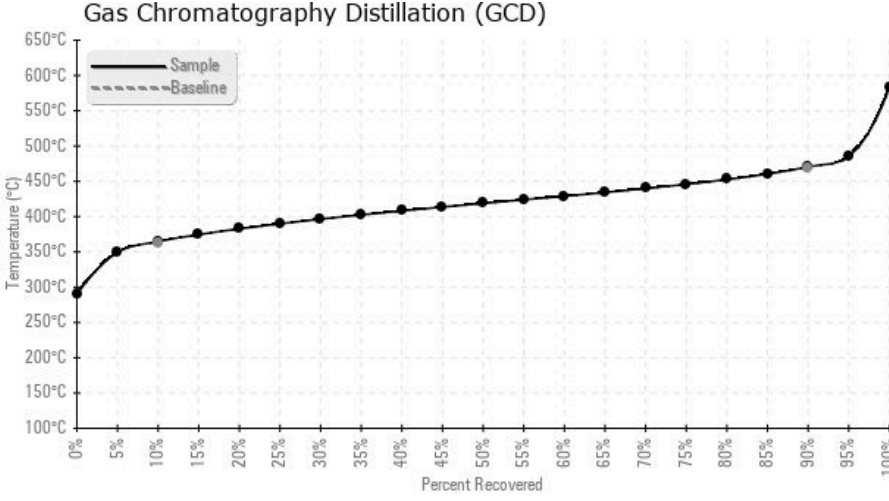
Sample Date	Received Date	Fluid Age	Sample Location	Flash Point (COC)	Water (KF)	Viscosity (40°C)	Acid Number	Solids	GCD 10%	GCD 50%	GCD 90%	GCD % < 335°C
	mm/dd/yy			°F/°C	ppm	cSt	mg/KOH/g	%wt	°F/°C	°F/°C	°F/°C	%
03/25/18	08/07/18	0h		421 / 216	60.1	35.2	0.20	1.10	688 / 365	786 / 419	879 / 471	2.17
Baseline Data				388 / 198		30.6	0.13		685 / 363		876 / 469	





Sample Date	Iron	Chromium	Nickel	Aluminum	Copper	Lead	Tin	Cadmium	Silver	Vanadium	Silicon	Sodium	Potassium	Titanium	Molybdenum	Antimony	Manganese	Lithium	Boron	Magnesium	Calcium	Barium	Phosphorus	Zinc
03/25/18	3	0	0	0	0	0	0	0	0	0	0	0	0	0	0	0	0	0	0	0	0	0	0	0
Baseline Data			0	0						0			0	0					0				0	

Elemental analysis results (above) in parts per million (ppm). [10,000 ppm = 1.0%]



### Historical Comments


Petro-Canada makes no representation or warranty of any kind, either express or implied, as to the accuracy or completeness of the analysis and assumes no responsibility and shall have no liability whatsoever with respect to such analysis, or a party's use of it. Petro-Canada is a division of HollyFrontier Corporation.