

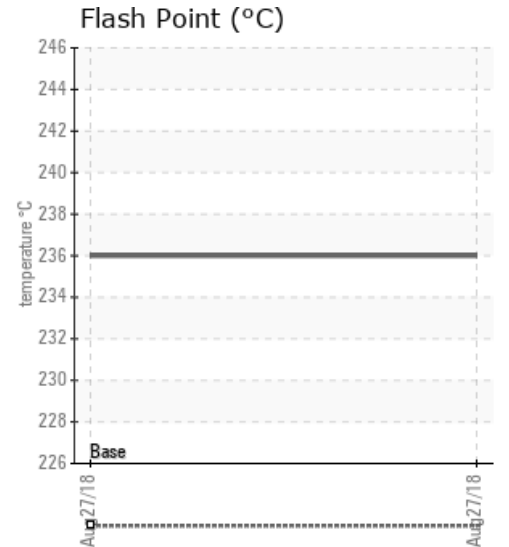
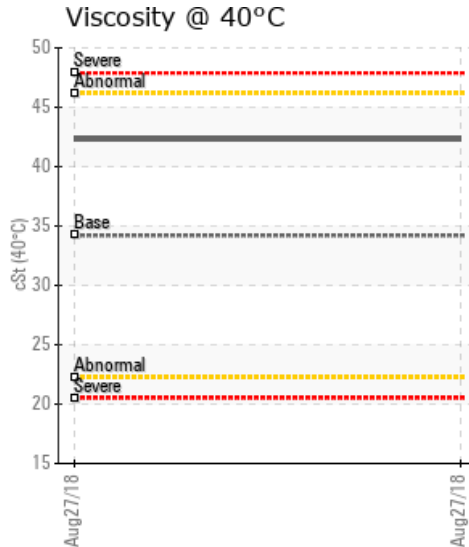
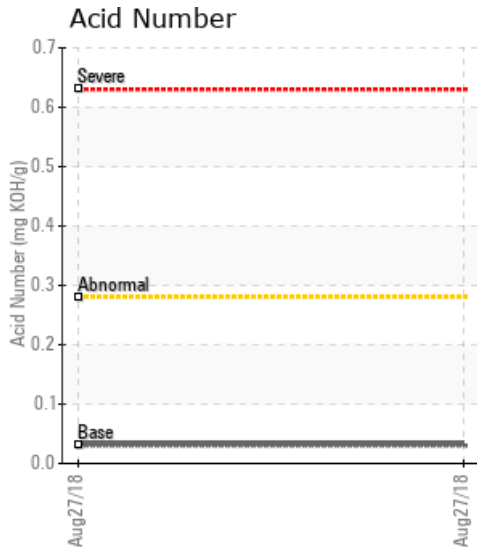
[BOTTOM HOT OIL ACCUMULATOR / LSD 7-16-62-8W6] 716628W6

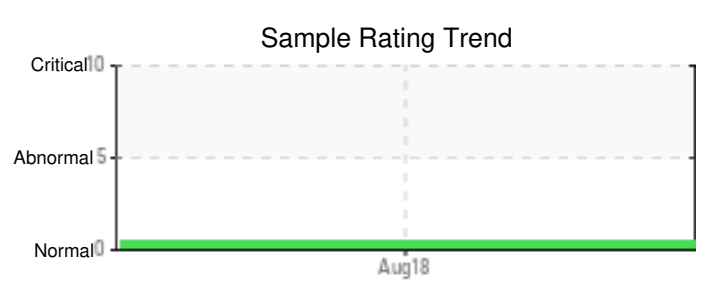
Customer: PTRHTF20062	System Information	Sample Information
Pembina Gas Services	System Volume: 1800 gal	Lab No: 02251505
GRANDE PRAIRIE, AB T8V 7K2 Canada	Bulk Operating Temp: 378F / 192C	Analyst: Clinton Buhler
Attn: Clint Letendre	Heating Source:	Sample Date: 08/27/18
Tel: (780)897-5409	Blanket:	Received Date: 11/14/18
E-Mail: cletendre@pembina.com	Fluid: PETRO CANADA PETRO-THERM	Completed: 11/15/18
	Make: CABIN HEATER	

Recommendation: Sample results indicate the fluid is suitable for continued service. Fluid viscosity is slightly higher than what is expected for Petro-Therm. This may indicate a possible mixture of fluids. Please re-sample in 12 months

Comments:

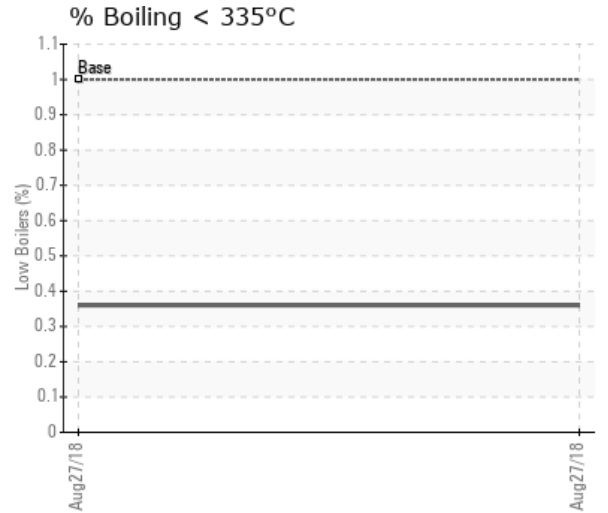
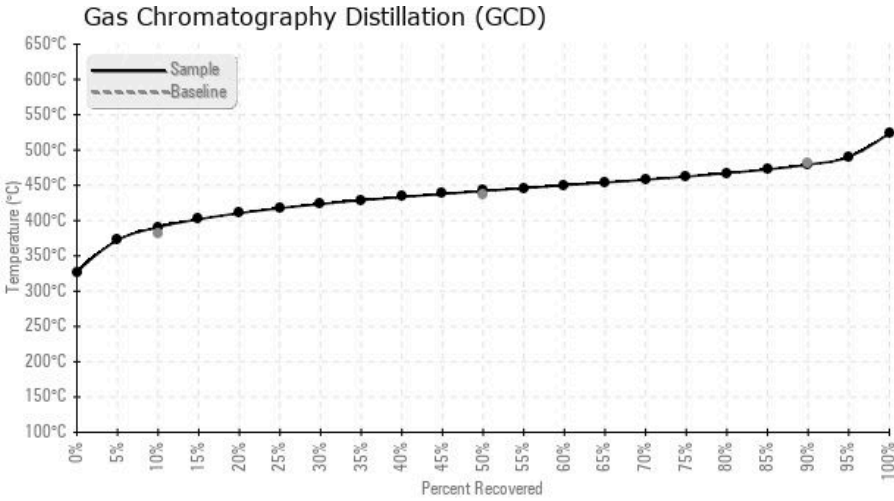
Sample Date	Received Date	Fluid Age	Sample Location	Flash Point (COC)	Water (KF)	Viscosity (40°C)	Acid Number	Solids	GCD 10%	GCD 50%	GCD 90%	GCD % < 335°C
	mm/dd/yy			°F/°C	ppm	cSt	mg/KOH/g	%wt	°F/°C	°F/°C	°F/°C	%
08/27/18	11/14/18	6y		457 / 236	6.5	42.3	0.033	0.093	735 / 391	827 / 442	895 / 479	0.36
Baseline Data				433 / 223		34.2	0.03		720 / 382	817 / 436	900 / 482	1.00





Sample Date	Iron	Chromium	Nickel	Aluminum	Copper	Lead	Tin	Cadmium	Silver	Vanadium	Silicon	Sodium	Potassium	Titanium	Molybdenum	Antimony	Manganese	Lithium	Boron	Magnesium	Calcium	Barium	Phosphorus	Zinc
08/27/18	20	0	0	0	0	0	0	0	0	0	0	0	0	0	0	0	0	0	0	0	0	0	0	0
Baseline Data			0	0						0			0	0					0				0	

Elemental analysis results (above) in parts per million (ppm). [10,000 ppm = 1.0%]



Historical Comments

Petro-Canada makes no representation or warranty of any kind, either express or implied, as to the accuracy or completeness of the analysis and assumes no responsibility and shall have no liability whatsoever with respect to such analysis, or a party's use of it. Petro-Canada is a division of HollyFrontier Corporation.