

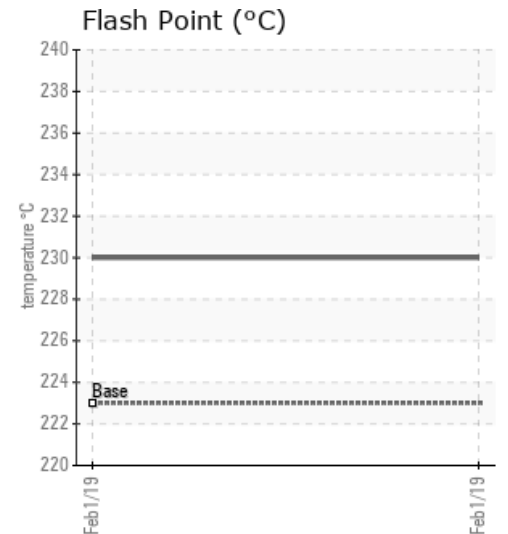
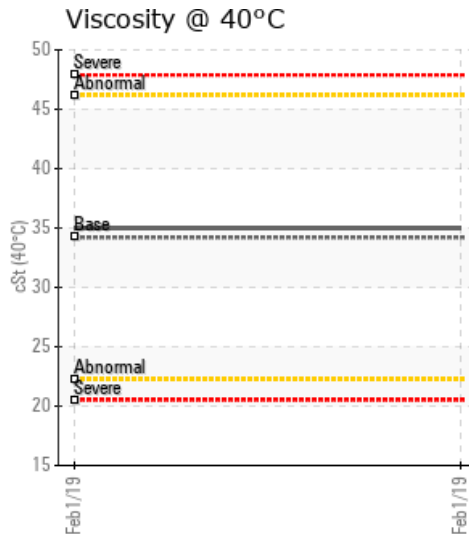
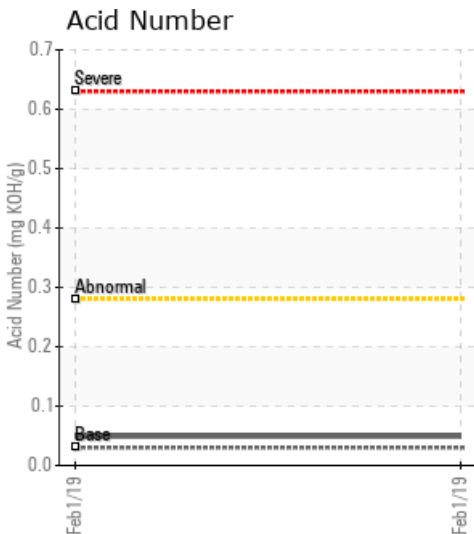
## [LSD 07-35-67-07 W6M] SEMCAMS-WAPITI H-933 A&B

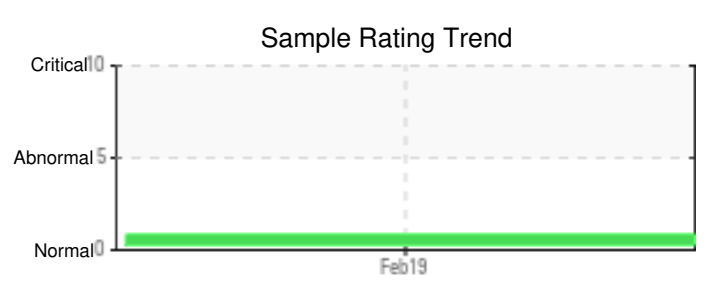
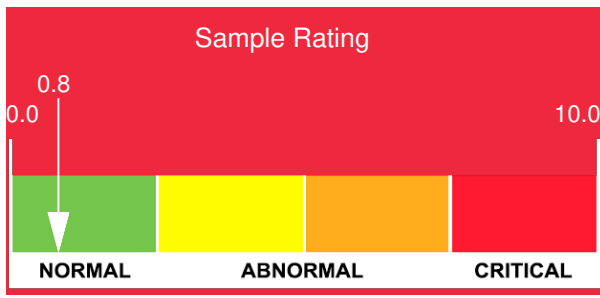
Customer: PTRHTF20046	System Information	Sample Information
QUADRA CHEMICALS 12925 146TH STREET EDMONTON, AB T5L 2H6 CANADA Attn: Quadra Samples Tel: E-Mail: quadra_samples@quadra.ca	System Volume: 209000 ltr Bulk Operating Temp: 437F / 225C Heating Source: Blanket: Fluid: PETRO CANADA PETRO-THERM Make: HEATECH	Lab No: 02267990 Analyst: Clinton Buhler Sample Date: 02/01/19 Received Date: 02/14/19 Completed: 02/20/19

Recommendation: Base-line fluid sample after 28 days service. Fluid is healthy. Please re-sample in 6 months

Comments: (GCD) 90% Distillation Point is marginally low.

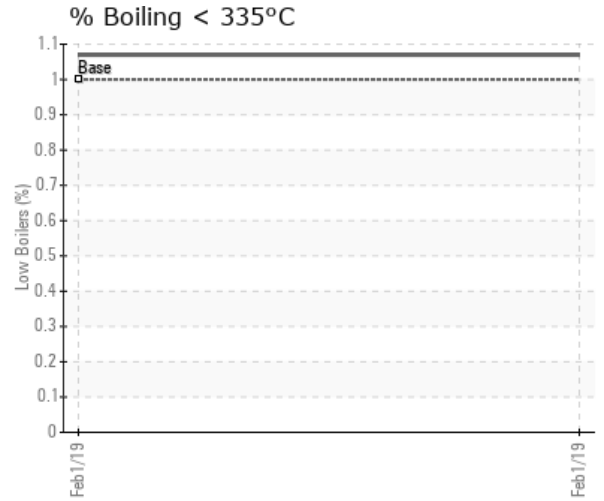
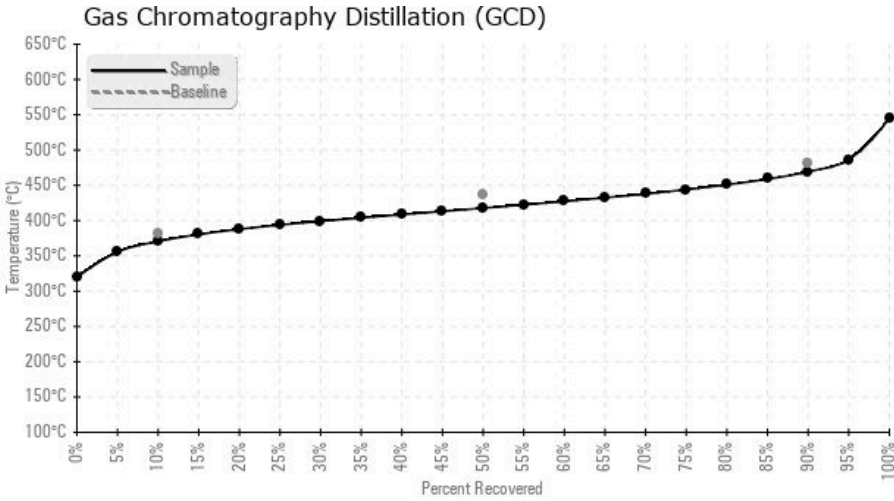
Sample Date	Received Date	Fluid Age	Sample Location	Flash Point (COC)	Water (KF)	Viscosity (40°C)	Acid Number	Solids	GCD 10%	GCD 50%	GCD 90%	GCD % < 335°C
	mm/dd/yy			°F/°C	ppm	cSt	mg/KOH/g	%wt	°F/°C	°F/°C	°F/°C	%
02/01/19	02/14/19	28d		446 / 230	4.7	35.0	0.049	0.032	699 / 371	784 / 418	877 / 469	1.07
Baseline Data				433 / 223		34.2	0.03		720 / 382	817 / 436	900 / 482	1.00





Sample Date	Iron	Chromium	Nickel	Aluminum	Copper	Lead	Tin	Cadmium	Silver	Vanadium	Silicon	Sodium	Potassium	Titanium	Molybdenum	Antimony	Manganese	Lithium	Boron	Magnesium	Calcium	Barium	Phosphorus	Zinc
02/01/19	2	0	0	0	0	0	0	0	0	0	0	0	0	0	0	0	0	0	0	0	0	0	0	0
<b>Baseline Data</b>			0	0						0			0	0					0				0	

Elemental analysis results (above) in parts per million (ppm). [10,000 ppm = 1.0%]



### Historical Comments


Petro-Canada makes no representation or warranty of any kind, either express or implied, as to the accuracy or completeness of the analysis and assumes no responsibility and shall have no liability whatsoever with respect to such analysis, or a party's use of it. Petro-Canada is a division of HollyFrontier Corporation.