

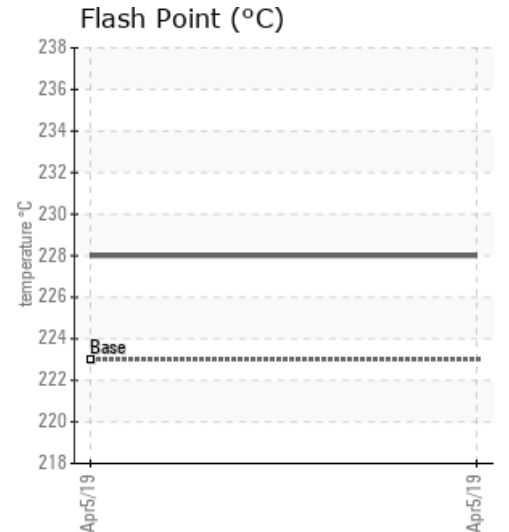
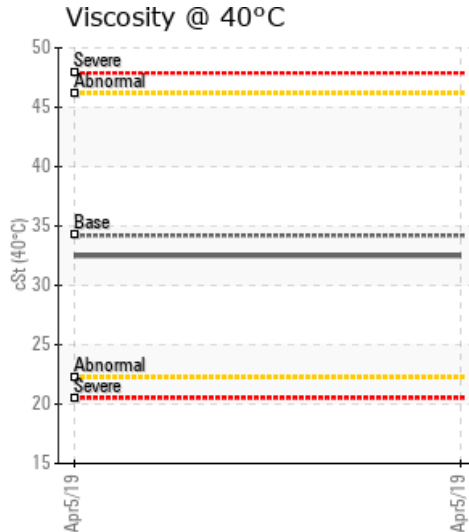
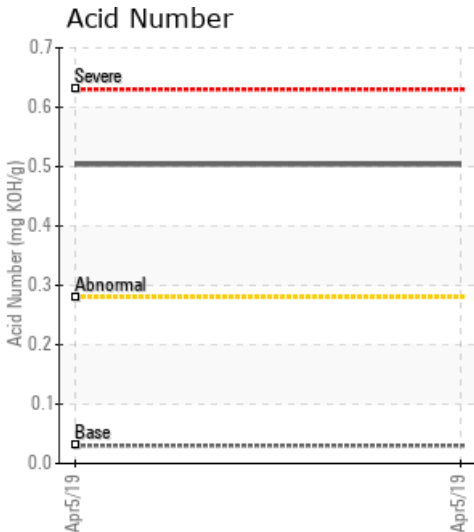
## HEAT TRANSFER

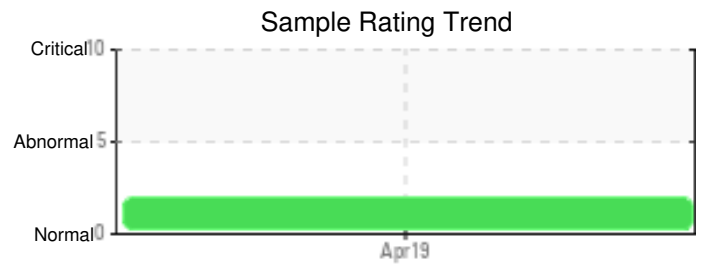
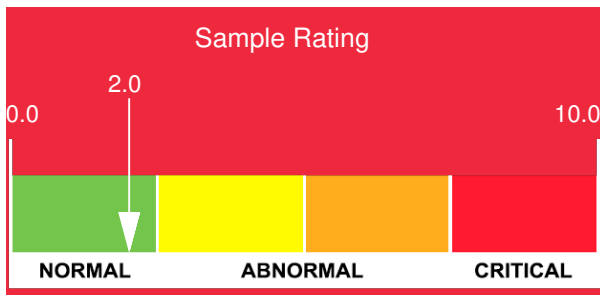
Customer: PTRHTF30128	System Information	Sample Information
Multimatic-Inmet Division 35 West Wilmot Street Richmond Hill, ON L4B 1L7 Canada Attn: Jeff Riddell Tel: (647)212-4398 E-Mail:	System Volume: 60 ltr Bulk Operating Temp: 482F / 250C Heating Source: Blanket: Fluid: PETRO CANADA PETRO-THERM Make: REGAL	Lab No: 02277943 Analyst: Behshad Sabah Sample Date: 04/05/19 Received Date: 04/08/19 Completed: 04/24/19

### Recommendation:

Comments: Pentane Insolubles levels are abnormally high. High PI test detects the remaining of the Hydrex AW oil. This unit has been contaminated with Hydrex AW last year. A full cleanup was done before Jan 2019, the new sample, which were sent to two different labs, indicate that still there are residue of the Hydrex AW in the system. The rest of the oil parameters are in the range Acid Number (AN) is abnormally high.

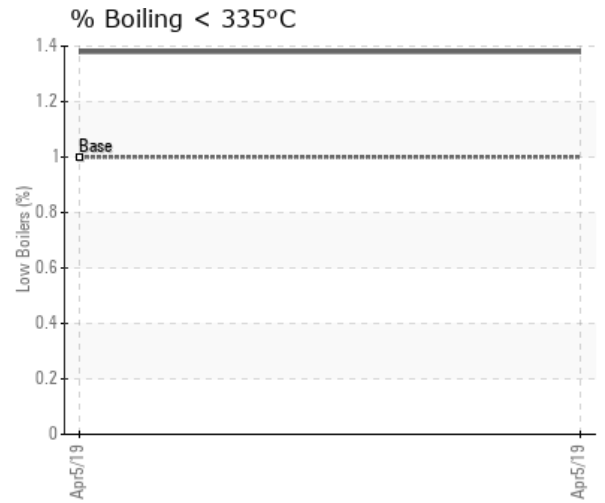
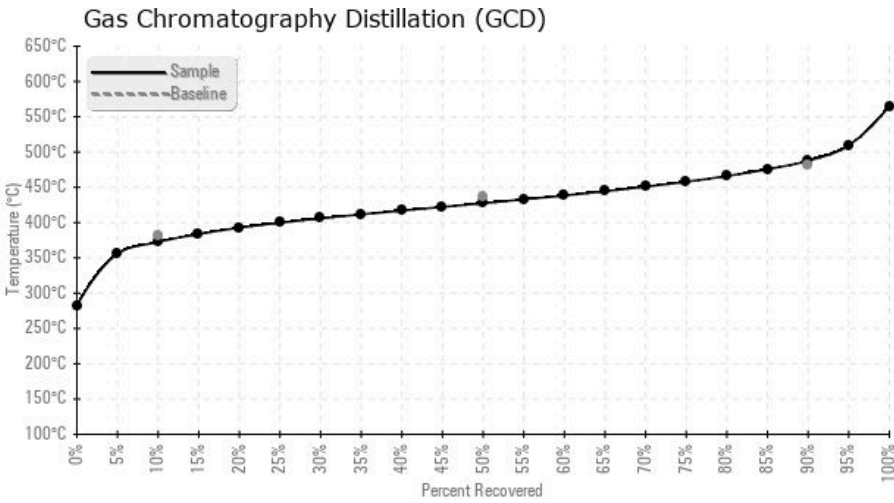
Sample Date	Received Date	Fluid Age	Sample Location	Flash Point (COC)	Water (KF)	Viscosity (40°C)	Acid Number	Solids	GCD 10%	GCD 50%	GCD 90%	GCD % < 335°C
	mm/dd/yy			°F/°C	ppm	cSt	mg/KOH/g	%wt	°F/°C	°F/°C	°F/°C	%
04/05/19	04/08/19	4m	VALVE AFTER THE HEAT	442 / 228	0.0	32.5	0.504	0.456	702 / 372	801 / 427	910 / 488	1.38
Baseline Data				433 / 223		34.2	0.03		720 / 382	817 / 436	900 / 482	1.00





Sample Date	Iron	Chromium	Nickel	Aluminum	Copper	Lead	Tin	Cadmium	Silver	Vanadium	Silicon	Sodium	Potassium	Titanium	Molybdenum	Antimony	Manganese	Lithium	Boron	Magnesium	Calcium	Barium	Phosphorus	Zinc
04/05/19	7	0	0	0	1	1	0	0	0	0	1	0	0	0	0	0	0	0	0	0	0	0	226	14
<b>Baseline Data</b>			0	0						0			0	0					0				0	

Elemental analysis results (above) in parts per million (ppm). [10,000 ppm = 1.0%]



### Historical Comments


Petro-Canada makes no representation or warranty of any kind, either express or implied, as to the accuracy or completeness of the analysis and assumes no responsibility and shall have no liability whatsoever with respect to such analysis, or a party's use of it. Petro-Canada is a division of HollyFrontier Corporation.