

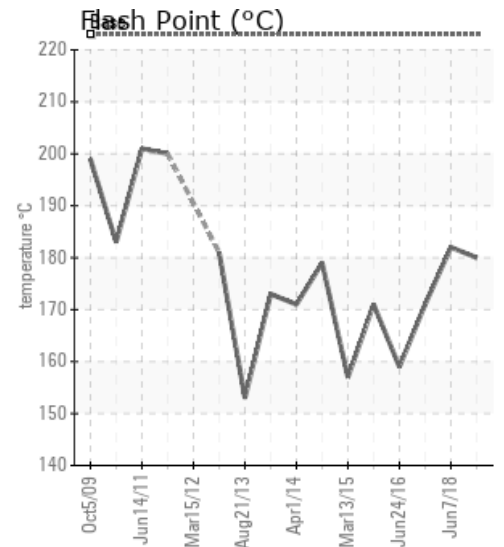
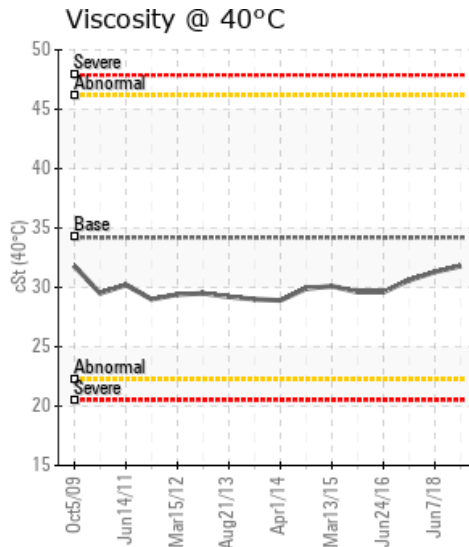
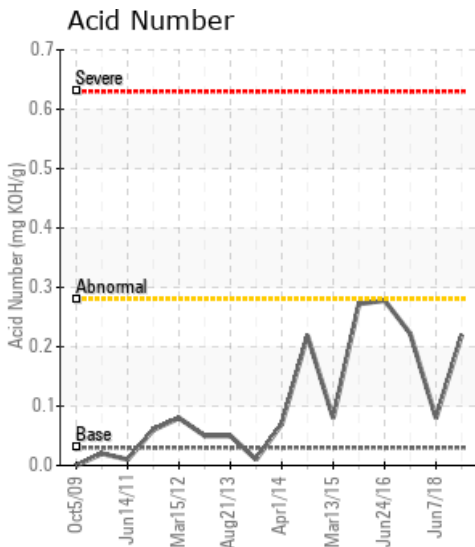
WANSON DEO 60 MBI 8000

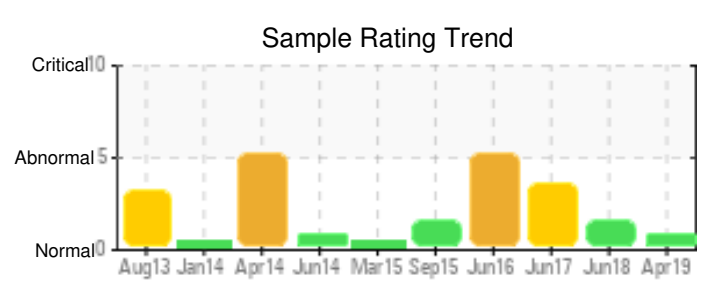
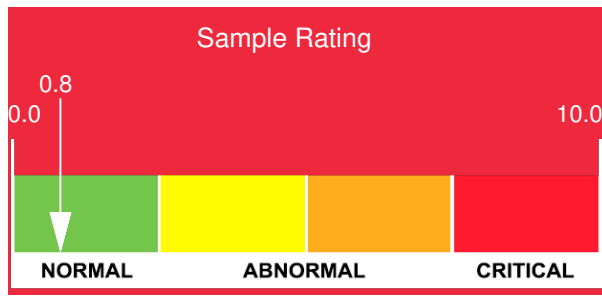
Customer: PTRHTF40075	System Information	Sample Information
TOP TASTE BV KLOOSTERPOORT 33 KAPELLE 4421SN KAPELLE, 4421SN Netherlands Attn: WILBERT SNIJERS Tel: E-Mail: w.snijers@klt.nl	System Volume: 6000 ltr Bulk Operating Temp: 473F / 245C Heating Source: Blanket: Fluid: PETRO CANADA PETRO-THERM Make: WANSON	Lab No: 02281303 Analyst: Philip Riley Sample Date: 04/16/19 Received Date: 04/24/19 Completed: 04/29/19

Recommendation: Flash Point marginally low but consistent with (or improved on) majority of the last 6 annual samples. Review again at normal period. Light end molecules have been vented looking at previous sample results

Comments: COC Flash Point is marginally low.

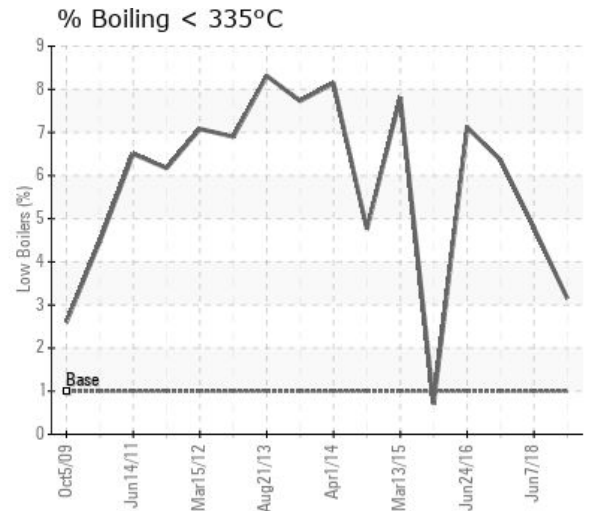
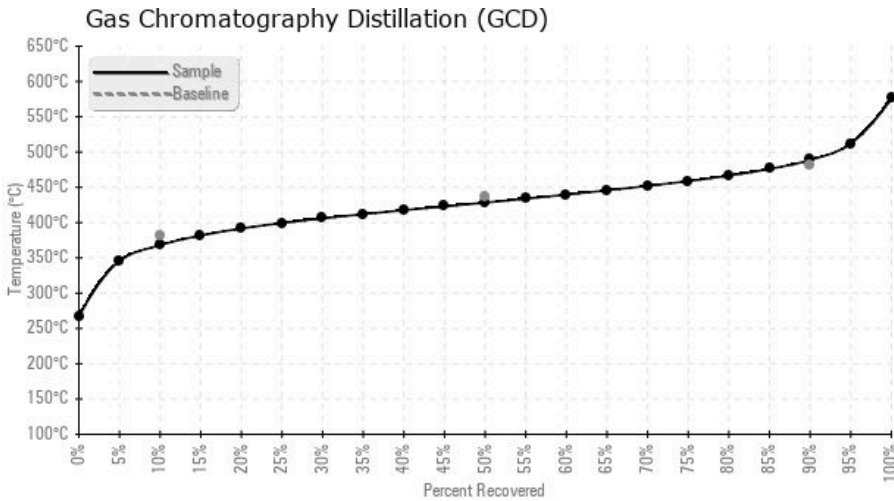
Sample Date	Received Date	Fluid Age	Sample Location	Flash Point (COC)	Water (KF)	Viscosity (40°C)	Acid Number	Solids	GCD 10%	GCD 50%	GCD 90%	GCD % < 335°C
	mm/dd/yy			°F/°C	ppm	cSt	mg/KOH/g	%wt	°F/°C	°F/°C	°F/°C	%
04/16/19	04/24/19	0y		356 / 180	44.5	31.8	0.22	0.216	694 / 368	803 / 428	912 / 489	3.15
06/07/18	06/11/18	10y		360 / 182	22.5	31.3	0.08	0.204	672 / 356	777 / 414	875 / 468	4.79
06/21/17	06/26/17	9y		340 / 171	38.0	30.6	0.222	0.171	669 / 354	804 / 429	940 / 505	6.36
06/24/16	07/05/16	7y	PTRHTF40075	318 / 159	7.0	29.6	0.278	0.071	661 / 350	801 / 427	924 / 496	7.12
09/16/15	09/25/15	7y		340 / 171	0.00	29.6	0.272	0.022	704 / 374	806 / 430	911 / 488	0.71
03/13/15	03/19/15	6y		315 / 157	11.7	30.1	0.08	0.134	654 / 345	794 / 423	907 / 486	7.81
Baseline Data				433 / 223		34.2	0.03		720 / 382	817 / 436	900 / 482	1.00





Sample Date	Iron	Chromium	Nickel	Aluminum	Copper	Lead	Tin	Cadmium	Silver	Vanadium	Silicon	Sodium	Potassium	Titanium	Molybdenum	Antimony	Manganese	Lithium	Boron	Magnesium	Calcium	Barium	Phosphorus	Zinc	
04/16/19	4	0	0	0	0	0	0	0	0	0	0	0	0	0	0	0	0	0	0	0	0	0	0	0	
06/07/18	5	0	0	0	0	0	0	0	0	0	1	0	0	0	0	0	0	0	0	0	0	0	0	0	0
06/21/17	4	0	0	0	0	0	0	0	0	0	0	0	0	0	0	0	0	0	0	0	0	0	0	0	0
06/24/16	0	0	0	1	0	0	0	0	0	0	0	1	0	0	0	0	0	0	0	0	0	0	0	0	0
09/16/15	5	0	0	0	0	0	0	0	0	0	0	0	0	0	0	0	0	0	0	0	0	0	0	0	0
03/13/15	1	0	0	0	0	0	0	0	0	0	0	1	0	0	0	0	0	0	0	0	0	0	0	0	0
Baseline Data			0	0						0			0	0					0				0		

Elemental analysis results (above) in parts per million (ppm). [10,000 ppm = 1.0%]



Historical Comments	
06/07/18	Flash Point marginally low but higher than previous samples for this oil charge. Looks to have improved in condition since last sample in a number of parameters so ask if there has been a partial change or sweetening of the oil in the system. Based on improved condition fit for further use but would suspect a bit of maintenance of fluid occurred. Overall sample rating is improved and leaves no concern for further use
06/21/17	Oil appears fit for further service. Suggest sample at next scheduled maintenance interval. (GCD) 90% Distillation Point is severely high. COC Flash Point is severely low.
06/24/16	Flash point is lower than expected. Oil contains some low boilers. Remove low boilers if possible. Oil is fit for further service at this time suggest sample at next scheduled maintenance interval. COC Flash Point is severely low. (GCD) % < 335°C is marginally high. (GCD) 90% Distillation Point is marginally high. (GCD) 10% Distillation Point is marginally low.
09/16/15	Oil appears to be fit for further service. Sample at next scheduled maintenance interval. COC Flash Point is abnormally low.
03/13/15	Oil is fit for further service. Oil contains some low boilers remove these if possible. Sample at next scheduled maintenance interval. COC Flash Point is severely low. (GCD) % < 335°C is marginally high. (GCD) 10% Distillation Point is marginally low.

Petro-Canada makes no representation or warranty of any kind, either express or implied, as to the accuracy or completeness of the analysis and assumes no responsibility and shall have no liability whatsoever with respect to such analysis, or a party's use of it. Petro-Canada is a division of HollyFrontier Corporation.