

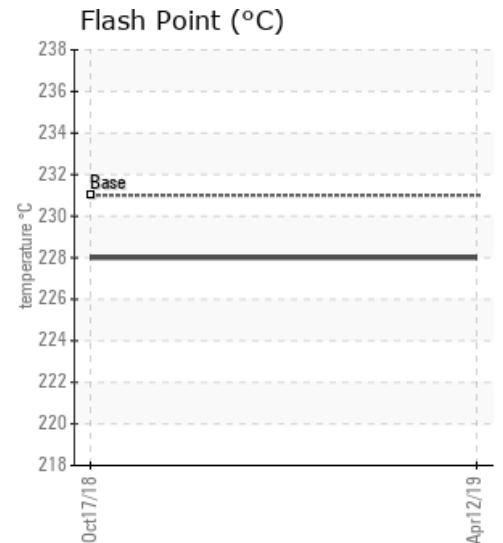
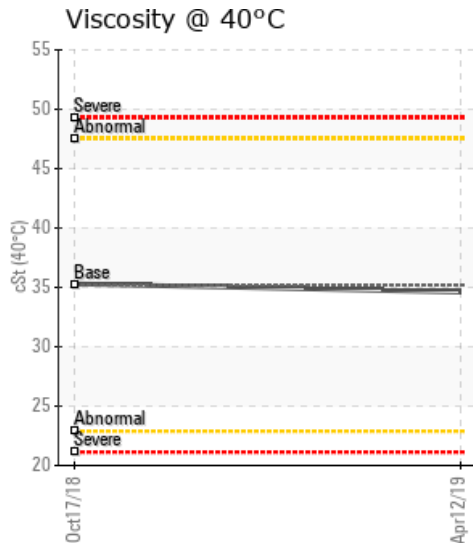
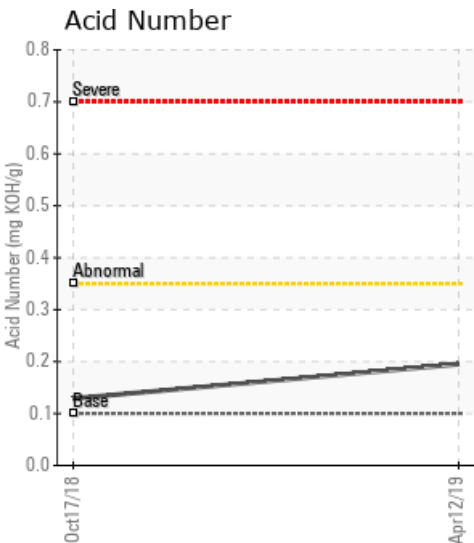
HEAT PLATE LINE 14

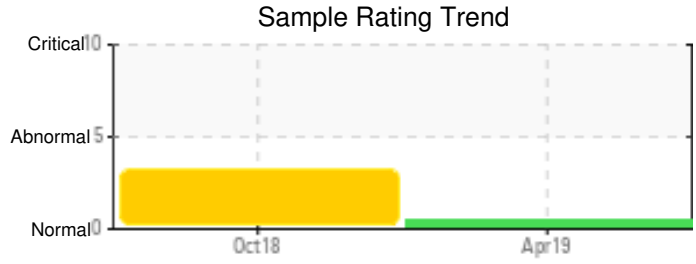
| Customer: PTRHTF10209 | System Information | Sample Information |
|--|--|--|
| CRUS OIL 2260 S WEST TEMPLE SALT LAKE CITY, UT 84115 USA Attn: BRIAN RODERICK Tel: (801)466-8783 E-Mail: BRIANRODERICK@CRUSOIL.COM | System Volume: 30 gal Bulk Operating Temp: 212F / 100C Heating Source: Blanket: Fluid: PETRO CANADA CALFLO HTF Make: CYQNET | Lab No: 02281924 Analyst: Steven Slanker Sample Date: 04/12/19 Received Date: 04/29/19 Completed: 05/09/19 |

Recommendation: Fluid looks in good condition, continue use.

Comments:

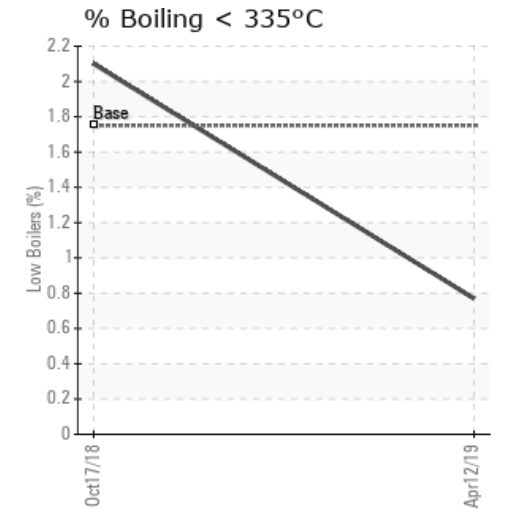
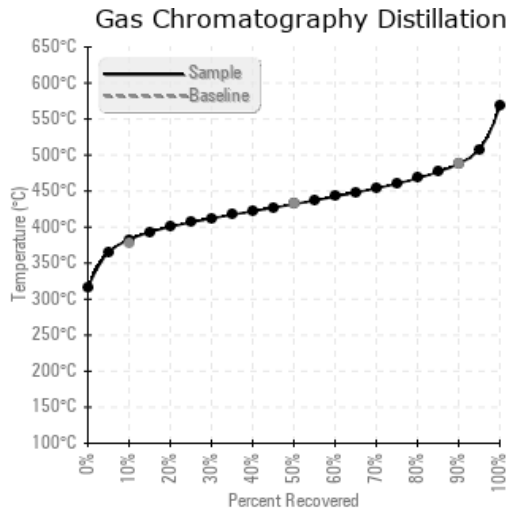
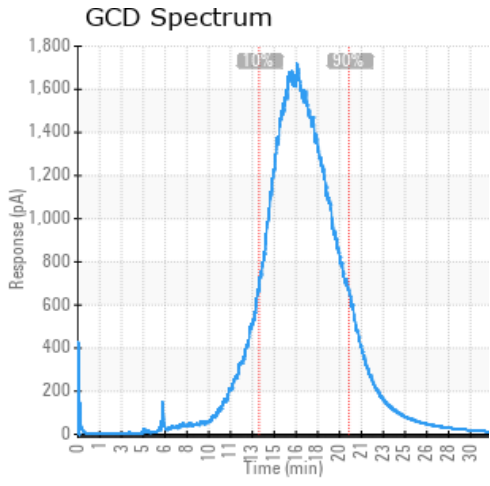
| Sample Date | Received Date | Fluid Age | Sample Location | Flash Point (COC) | Water (KF) | Viscosity (40°C) | Acid Number | Solids | GCD 10% | GCD 50% | GCD 90% | GCD % < 335°C |
|---------------|---------------|-----------|---------------------|-------------------|------------|------------------|-------------|--------|-----------|-----------|-----------|---------------|
| | mm/dd/yy | | | °F/°C | ppm | cSt | mg/KOH/g | %wt | °F/°C | °F/°C | °F/°C | % |
| 04/12/19 | 04/29/19 | 0y | BEFORE HEAVER INLET | 442 / 228 | 9.8 | 34.6 | 0.195 | 0.040 | 720 / 382 | 809 / 432 | 910 / 488 | 0.77 |
| 10/17/18 | 12/03/18 | 0y | | 442 / 228 | 7310 | 35.3 | 0.129 | 0.065 | 717 / 380 | 809 / 432 | 911 / 488 | 2.10 |
| Baseline Data | | | | 448 / 231 | | 35.20 | .1 | | 712 / 378 | 810 / 432 | 910 / 488 | 1.75 |





| Sample Date | Iron | Chromium | Nickel | Aluminum | Copper | Lead | Tin | Cadmium | Silver | Vanadium | Silicon | Sodium | Potassium | Titanium | Molybdenum | Antimony | Manganese | Lithium | Boron | Magnesium | Calcium | Barium | Phosphorus | Zinc |
|----------------------|------|----------|--------|----------|--------|------|-----|---------|--------|----------|---------|--------|-----------|----------|------------|----------|-----------|---------|-------|-----------|---------|--------|------------|------|
| 04/12/19 | 0 | 0 | 0 | 0 | 0 | 0 | 0 | 0 | 0 | 0 | 2 | 0 | 0 | 0 | 0 | 0 | 0 | 0 | 0 | 0 | 0 | 0 | 131 | 0 |
| 10/17/18 | 0 | 0 | 0 | 0 | 0 | 0 | 0 | 0 | 0 | 0 | 5 | 2 | 0 | 0 | 0 | 0 | 0 | 0 | 0 | 0 | 0 | 0 | 129 | 1 |
| Baseline Data | | | 0 | 0 | | | | | | 0 | | 0 | 0 | | | | | | 0 | | | | 280 | |

Elemental analysis results (above) in parts per million (ppm). [10,000 ppm = 1.0%]



Historical Comments

| | |
|----------|--|
| 10/17/18 | Water contamination levels are severely high. Water contamination levels are severely high.. ppm Water contamination levels are severely high. Please verify that lines are appropriately flushed before pulling a sample to ensure it's representative of the system. |
| | |
| | |
| | |

Petro-Canada makes no representation or warranty of any kind, either express or implied, as to the accuracy or completeness of the analysis and assumes no responsibility and shall have no liability whatsoever with respect to such analysis, or a party's use of it. Petro-Canada is a division of HollyFrontier Corporation.