

[DEASE DEVINE / LSD 12-27-81-18W6] CREW ENERGY SEPTIMUS PLANT SK-1500

Customer: PTRHTF20109
 Crew Energy Septimus Plant
 12-27-81-18W6
 8043-100TH AVENUE
 FORT ST. JOHN, BC V1J 1W2 Canada
 Attn: Dease Devine
 Tel: (250)262-1957
 E-Mail: dease.devine@crewenergy.com

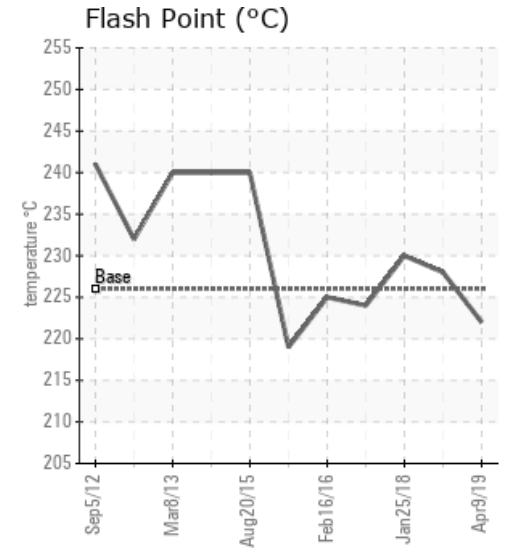
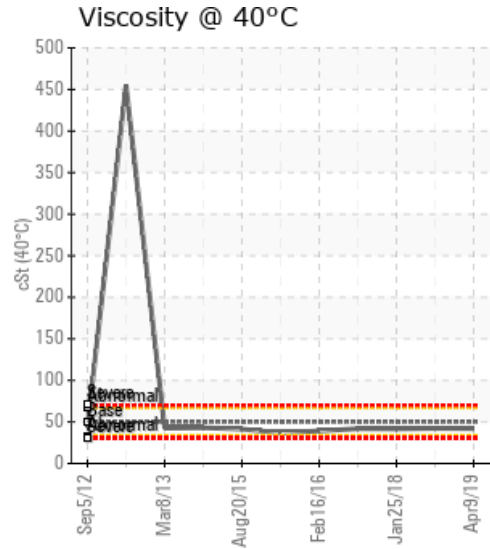
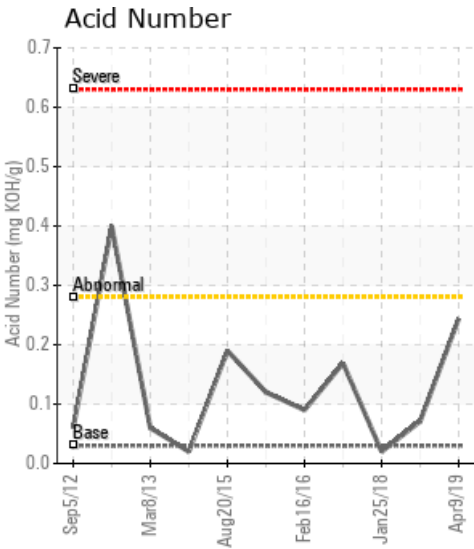
System Information
 System Volume: 24000 ltr
 Bulk Operating Temp: 356F / 180C
 Heating Source:
 Blanket:
 Fluid: SUNOCO SUN HEAT TRANSFER 21 PD
 Make: NATCO

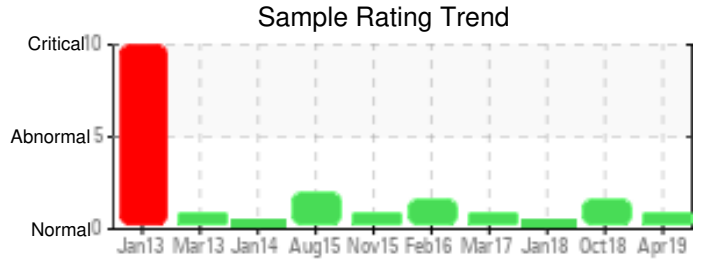
Sample Information
 Lab No: 02289103
 Analyst: Peter Harteveld
 Sample Date: 04/09/19
 Received Date: 06/05/19
 Completed: 07/12/19

Recommendation: The fluid is in good condition and suitable for further use. The 90% GCD temperature is elevated but this does not affect performance of the fluid. Please re-sample in 12 months.

Comments: (GCD) 90% Distillation Point is marginally high.

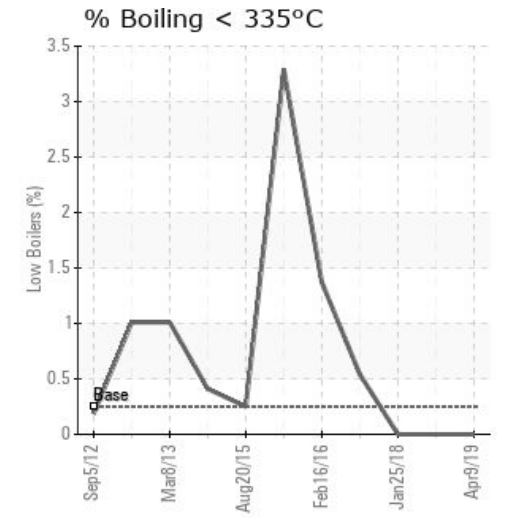
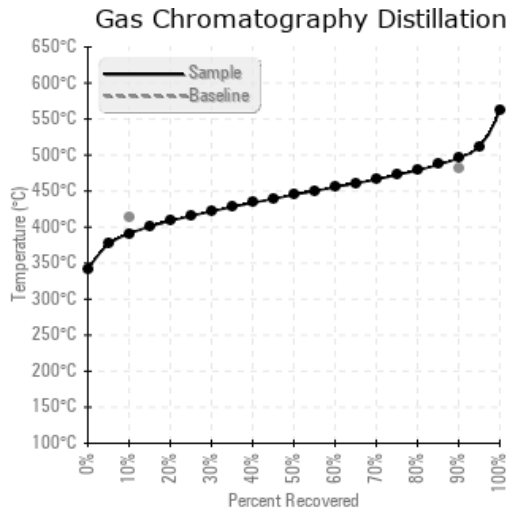
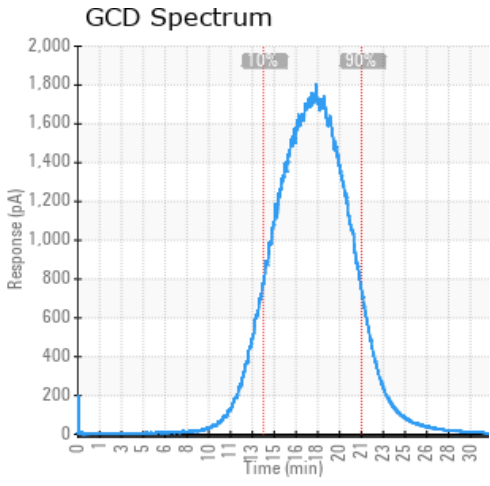
Sample Date	Received Date	Fluid Age	Sample Location	Flash Point (COC)	Water (KF)	Viscosity (40°C)	Acid Number	Solids	GCD 10%	GCD 50%	GCD 90%	GCD % < 335°C
	mm/dd/yy			°F/°C	ppm	cSt	mg/KOH/g	%wt	°F/°C	°F/°C	°F/°C	%
04/09/19	06/05/19	8y	PUMP DISCHARGE	432 / 222	23.3	42.0	0.244	0.312	735 / 391	832 / 445	925 / 496	0.00
10/17/18	11/07/18	7y		442 / 228	12.9	42.2	0.071	0.404	737 / 391	834 / 445	923 / 495	0.00
01/25/18	03/12/18	0y		446 / 230	1.5	41.7	0.02	0.350	731 / 388	800 / 426	892 / 478	0.00
03/01/17	03/10/17	6y	PUMP DISCHARGE	435 / 224	8.6	41.9	0.169	0.366	736 / 391	835 / 446	933 / 501	0.54
02/16/16	02/25/16	0y	SK1500	437 / 225	21.2	39.2	0.09	0.438	732 / 389	834 / 446	925 / 496	1.37
11/26/15	12/03/15	2y	PUMP DISCHARGE	426 / 219	0.00	36.8	0.12	0.534	720 / 382	826 / 441	920 / 493	3.29
Baseline Data				439 / 226		50.0	0.03		777 / 414		900 / 482	0.25





Sample Date	Iron	Chromium	Nickel	Aluminum	Copper	Lead	Tin	Cadmium	Silver	Vanadium	Silicon	Sodium	Potassium	Titanium	Molybdenum	Antimony	Manganese	Lithium	Boron	Magnesium	Calcium	Barium	Phosphorus	Zinc
04/09/19	30	0	0	0	0	0	0	0	0	0	4	0	0	0	0	0	0	0	0	0	1	0	0	0
10/17/18	30	0	0	0	0	0	0	0	0	0	3	0	1	0	0	0	0	0	0	0	1	0	0	0
01/25/18	18	0	0	0	0	0	0	0	0	0	3	0	0	0	0	0	0	0	0	0	0	0	0	0
03/01/17	31	0	0	0	0	0	0	0	0	0	3	1	0	0	0	0	0	0	0	0	0	0	0	0
02/16/16	28	0	0	0	0	0	0	0	0	0	3	1	1	0	0	0	0	0	1	0	1	0	0	0
11/26/15	29	0	0	0	0	0	0	0	0	0	3	0	2	0	0	0	0	0	0	0	1	0	0	0
Baseline Data			0	0						0			0	0					0				0	

Elemental analysis results (above) in parts per million (ppm). [10,000 ppm = 1.0%]



Historical Comments	
10/17/18	Sample results indicate the fluid is suitable for continued service. Please note solids content of 0.404%. This is nearing the warning limit of 0.5%. Consider filtration of fluid to reduce solids. Reduced viscosity may be related to their being some Teresso 32 mixed in the system. Re-sample in 12 months Pentane Insolubles levels are abnormally high. (GCD) 90% Distillation Point is marginally high.
01/25/18	Resample at the next service interval to monitor. All component wear rates are normal. The water content is negligible. There is no indication of any contamination in the fluid. The AN level is acceptable for this fluid. The condition of the fluid is suitable for further service.
03/01/17	Resample at the next service interval to monitor. The water content is negligible. There is no indication of any contamination in the component. (GCD) 90% Distillation Point is marginally high. The AN level is acceptable for this fluid. The condition of the fluid is suitable for further service.
02/16/16	(GCD) 90% Distillation Point is marginally high however is improved over previous sample. Pentane insolubles has stabilized. TAN and Viscosity continue to look good. Continue to operate and resample in 6 months. Pentane Insolubles levels are abnormally high. (GCD) 90% Distillation Point is marginally high.
11/26/15	(GCD) 90% Distillation Point is marginally high however is improved over previous sample. (GCD) 10% Distillation Point is marginally low. Pentane insolubles has risen slightly. TAN and Viscosity both look good. Continue to operate and resample in 6 months. Pentane Insolubles levels are abnormally high. (GCD) 90% Distillation Point is marginally high. (GCD) 10% Distillation Point is marginally low.

Petro-Canada makes no representation or warranty of any kind, either express or implied, as to the accuracy or completeness of the analysis and assumes no responsibility and shall have no liability whatsoever with respect to such analysis, or a party's use of it. Petro-Canada is a division of HollyFrontier Corporation.