

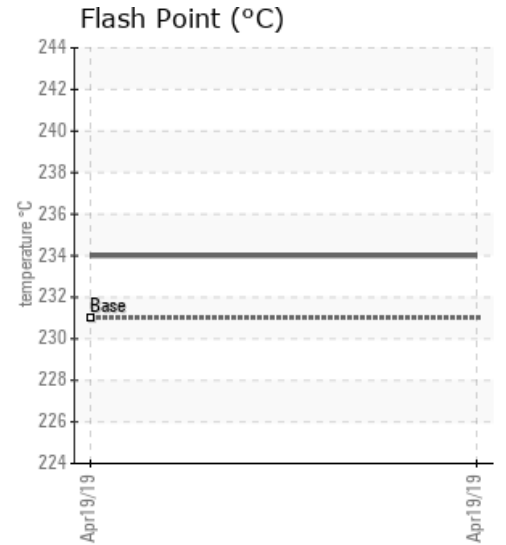
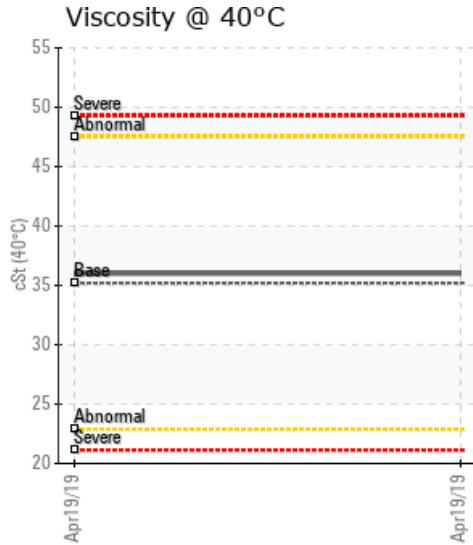
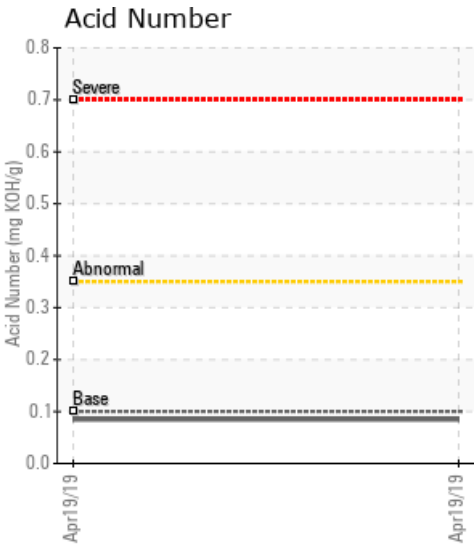
LINE #12 HEAT PLATE

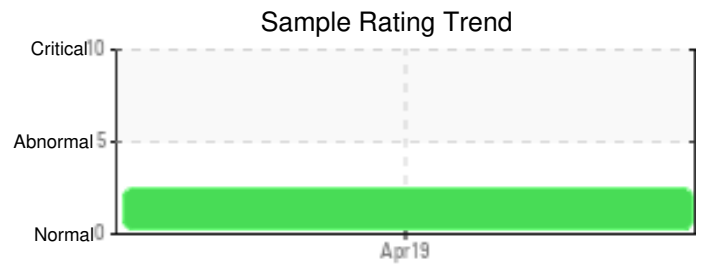
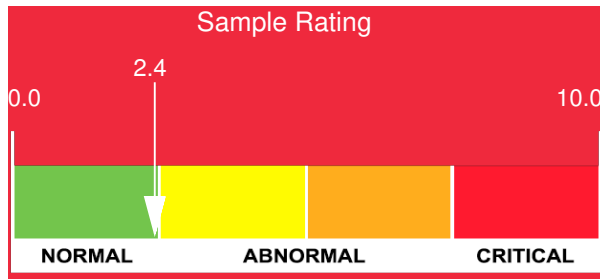
Customer: PTRHTF10194	System Information	Sample Information
HEXCEL 6700 W 5400 S SALT LAKE CITY, UT 84118 USA Attn: Ted Housel Tel: (801)201-2083 E-Mail: ted.housel@hexcel.com	System Volume: 50 gal Bulk Operating Temp: 275F / 135C Heating Source: Blanket: Fluid: PETRO CANADA CALFLO HTF Make:	Lab No: 02289108 Analyst: Neil Buchanan Sample Date: 04/19/19 Received Date: 06/05/19 Completed: 06/06/19

Recommendation: Water contamination levels are moderately high. Sample otherwise looks good. Resample next interval to monitor.

Comments: Water contamination levels are marginally high. Water contamination levels are marginally high.. ppm Water contamination levels are marginally high. (GCD) 90% Distillation Point is marginally low.

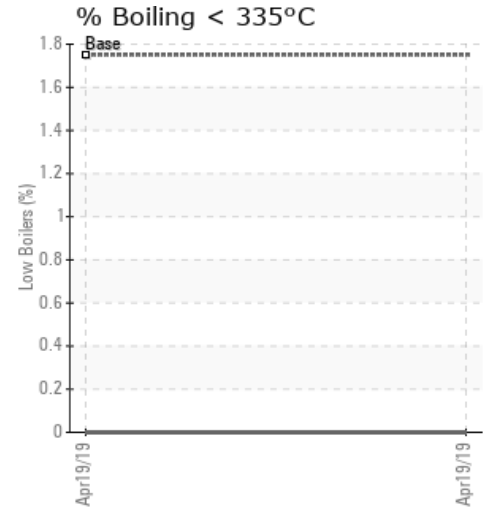
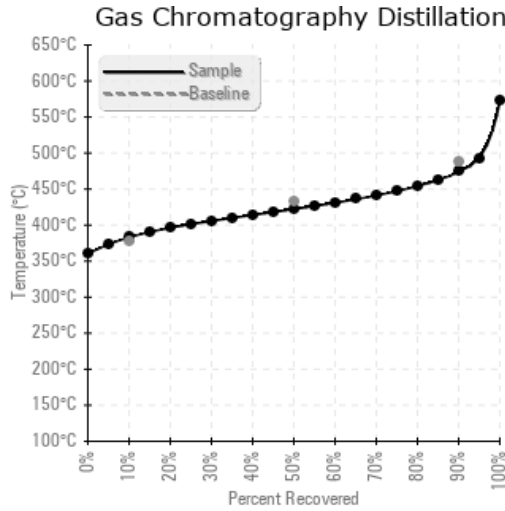
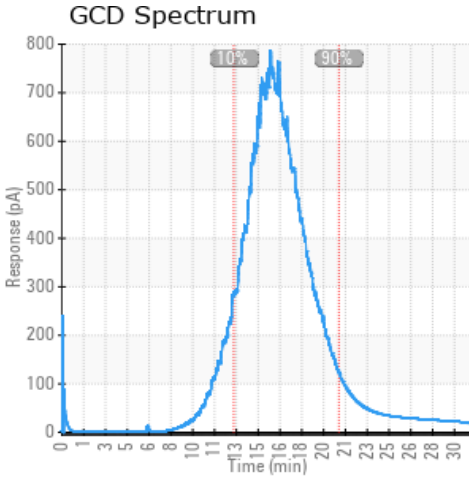
Sample Date	Received Date	Fluid Age	Sample Location	Flash Point (COC)	Water (KF)	Viscosity (40°C)	Acid Number	Solids	GCD 10%	GCD 50%	GCD 90%	GCD % < 335°C
	mm/dd/yy			°F/°C	ppm	cSt	mg/KOH/g	%wt	°F/°C	°F/°C	°F/°C	%
04/19/19	06/05/19	862h		453 / 234	385.2	36.0	0.085	0.043	721 / 383	792 / 422	885 / 474	0.00
Baseline Data				448 / 231		35.20	.1		712 / 378	810 / 432	910 / 488	1.75





Sample Date	Iron	Chromium	Nickel	Aluminum	Copper	Lead	Tin	Cadmium	Silver	Vanadium	Silicon	Sodium	Potassium	Titanium	Molybdenum	Antimony	Manganese	Lithium	Boron	Magnesium	Calcium	Barium	Phosphorus	Zinc	
04/19/19	0	0	0	0	0	0	0	0	0	0	3	3	0	0	0	0	0	0	0	0	2	0	265	2	
Baseline Data			0	0						0			0	0					0					280	

Elemental analysis results (above) in parts per million (ppm). [10,000 ppm = 1.0%]



Historical Comments

Petro-Canada makes no representation or warranty of any kind, either express or implied, as to the accuracy or completeness of the analysis and assumes no responsibility and shall have no liability whatsoever with respect to such analysis, or a party's use of it. Petro-Canada is a division of HollyFrontier Corporation.