

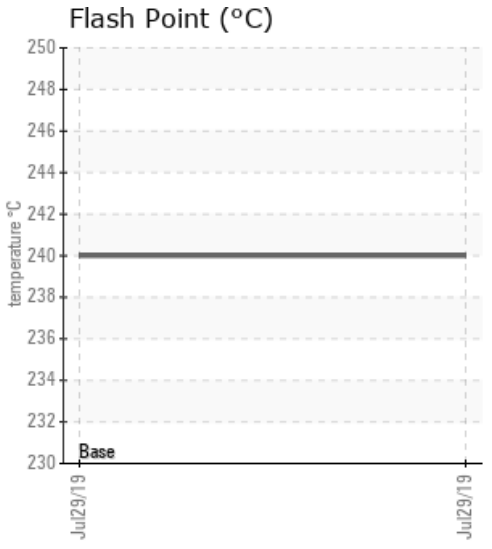
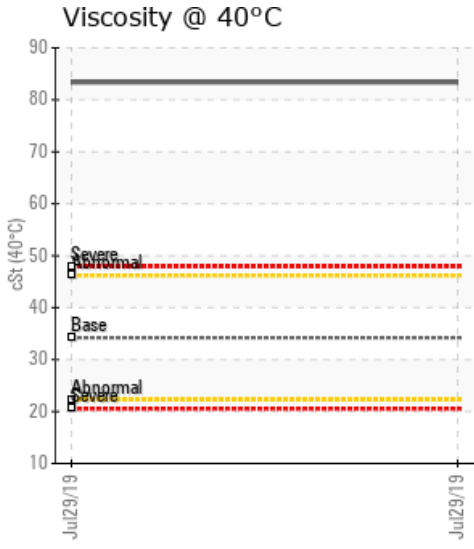
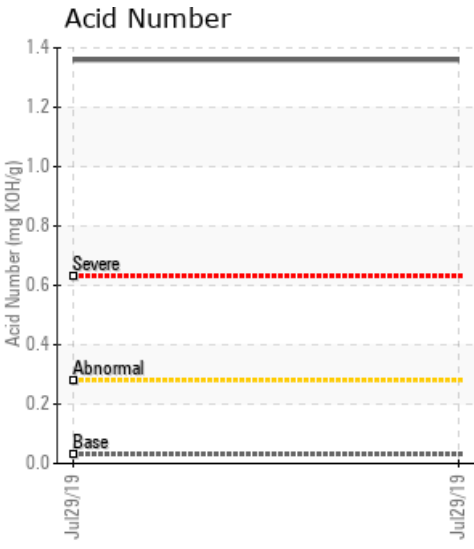
438-HO-002

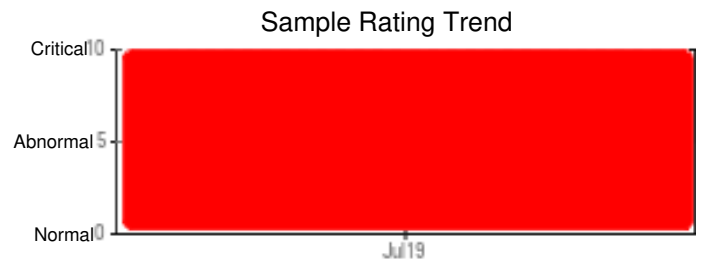
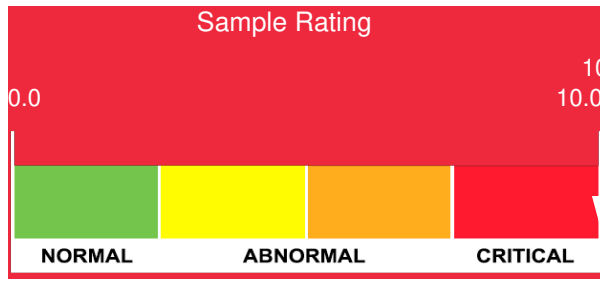
Customer: PTRHTF20217	System Information	Sample Information
McAsphalt Industries LTD 4529 Industrial Park Rd Macklin, SK S0L 2C0 Canada Attn: Nick Lovell Tel: (306)753-2717 E-Mail: nlovell@mcasphalt.com	System Volume: 5000 ltr Bulk Operating Temp: 392F / 200C Heating Source: Blanket: Fluid: PETRO CANADA PETRO-THERM Make: CEI	Lab No: 02300101 Analyst: Behshad Sabah Sample Date: 07/29/19 Received Date: 07/31/19 Completed: 08/06/19

Recommendation: High TAN, High Pentane Insoluble and high viscosity are the indication of the oil oxidation, the formed acid will corrode the pipes and fittings with the risk of pinholes and oil leak. please change the oil

Comments: PQ levels are severe. Iron ppm levels are abnormal. Pentane Insolubles levels are severely high. Acid Number (AN) is severely high. Visc @ 40°C is severely high. (GCD) 90% Distillation Point is abnormally high.

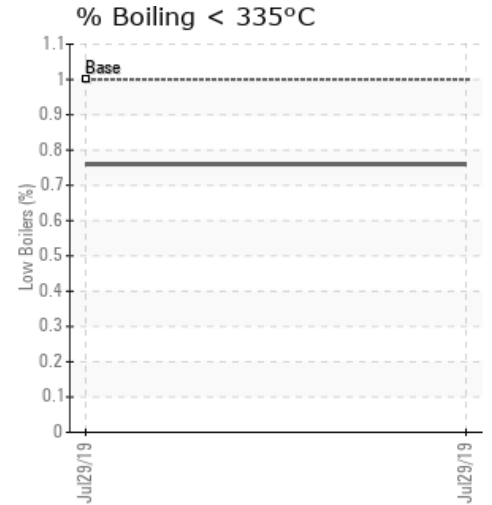
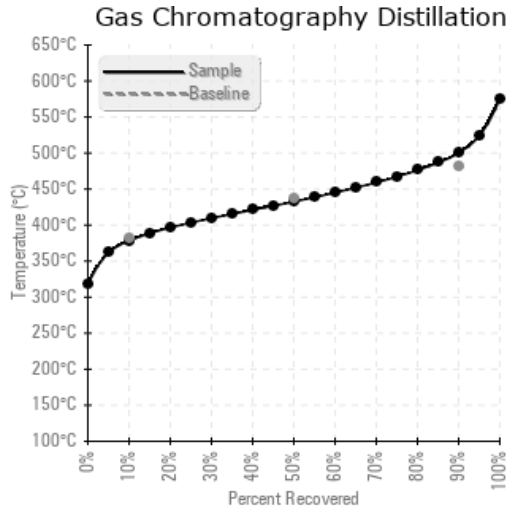
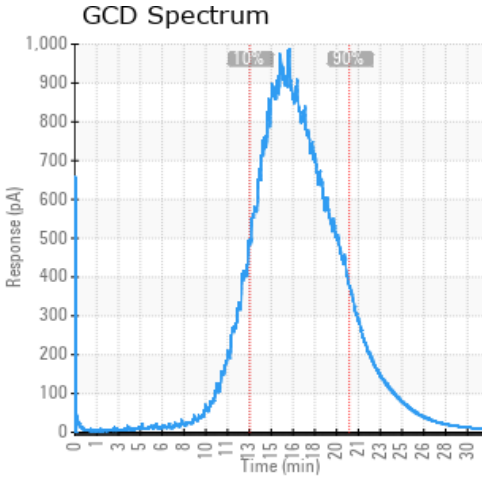
Sample Date	Received Date	Fluid Age	Sample Location	Flash Point (COC)	Water (KF)	Viscosity (40°C)	Acid Number	Solids	GCD 10%	GCD 50%	GCD 90%	GCD % < 335°C
	mm/dd/yy			°F/°C	ppm	cSt	mg/KOH/g	%wt	°F/°C	°F/°C	°F/°C	%
07/29/19	07/31/19	5y	MN DISTRIBU DISCHARG	464 / 240	90.7	83.4	1.36	7.82	713 / 378	811 / 433	932 / 500	0.76
Baseline Data				433 / 223		34.2	0.03		720 / 382	817 / 436	900 / 482	1.00





Sample Date	Iron	Chromium	Nickel	Aluminum	Copper	Lead	Tin	Cadmium	Silver	Vanadium	Silicon	Sodium	Potassium	Titanium	Molybdenum	Antimony	Manganese	Lithium	Boron	Magnesium	Calcium	Barium	Phosphorus	Zinc
07/29/19	240	0	0	0	0	0	0	0	0	0	0	5	0	0	0	0	2	0	0	0	0	0	0	0
Baseline Data			0	0						0			0	0				0					0	

Elemental analysis results (above) in parts per million (ppm). [10,000 ppm = 1.0%]



Historical Comments

Petro-Canada makes no representation or warranty of any kind, either express or implied, as to the accuracy or completeness of the analysis and assumes no responsibility and shall have no liability whatsoever with respect to such analysis, or a party's use of it. Petro-Canada is a division of HollyFrontier Corporation.