

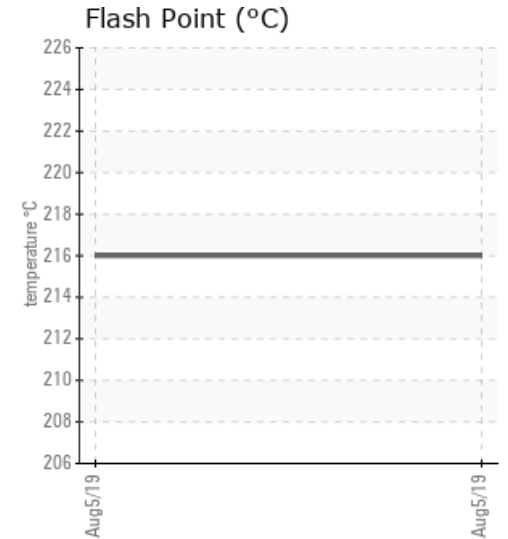
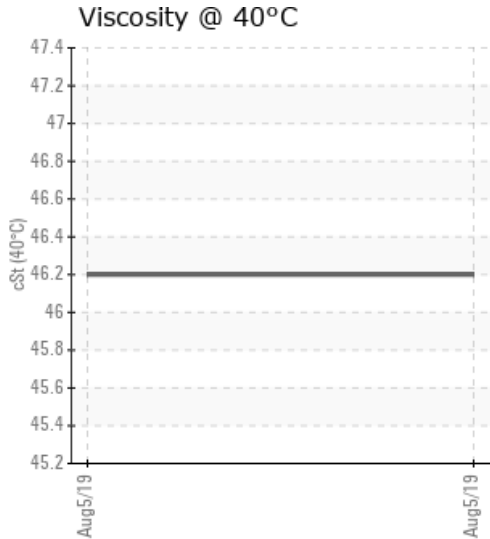
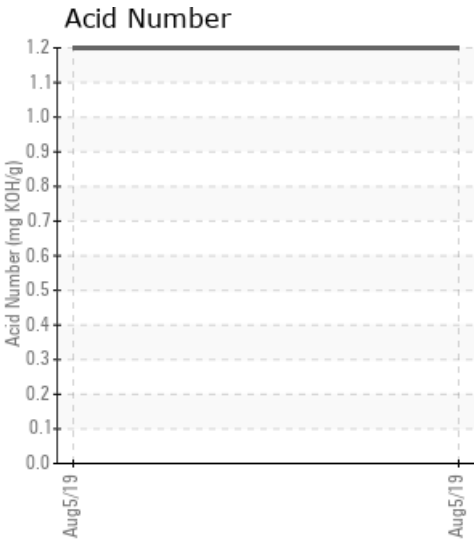
NEW HEATER

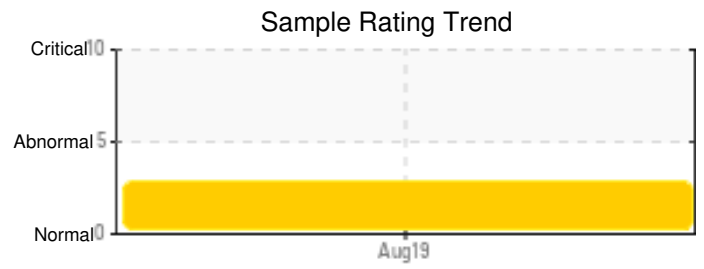
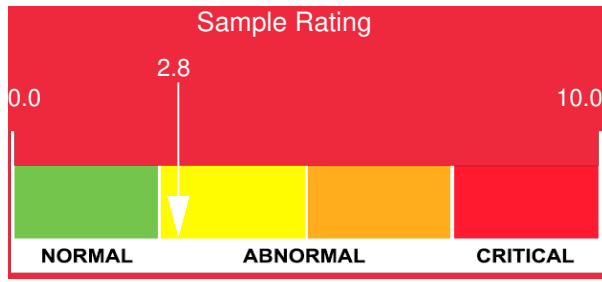
Customer: PTRHTF30137	System Information	Sample Information
McAsphalt Industries LTD 950 Boulevard Gérard-Cadieux Salaberry-de-Valleyfield, QC J6T 6L4 Canada Attn: Service Manager Tel: E-Mail:	System Volume: 0 ltr Bulk Operating Temp: Not Specified Heating Source: Blanket: Fluid: NOT GIVEN Make:	Lab No: 02300940 Analyst: Behshad Sabah Sample Date: 08/05/19 Received Date: 08/06/19 Completed: 08/09/19

Recommendation: High TAN , High Pantene Insoluble, and high viscosity all indications of oil oxidation. the Esso Teresstic which is in the system is not a heat transfer oil. the oil acidity will corrode the piping and fittings with the risk of pinholes and leaks. should monitor the system and be ready to changeout to a HTF fluid.

Comments: Pentane Insolubles levels are severely high. Acid Number (AN) is abnormally high.

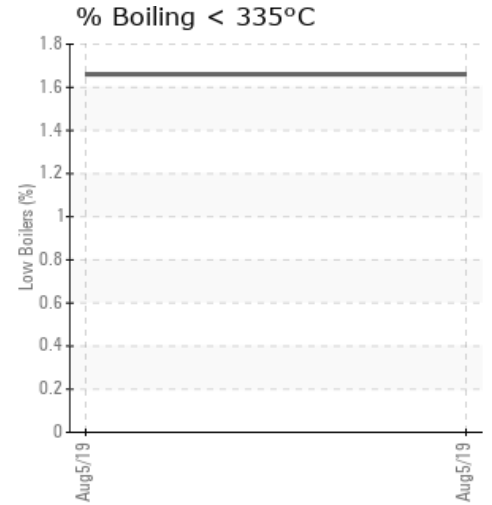
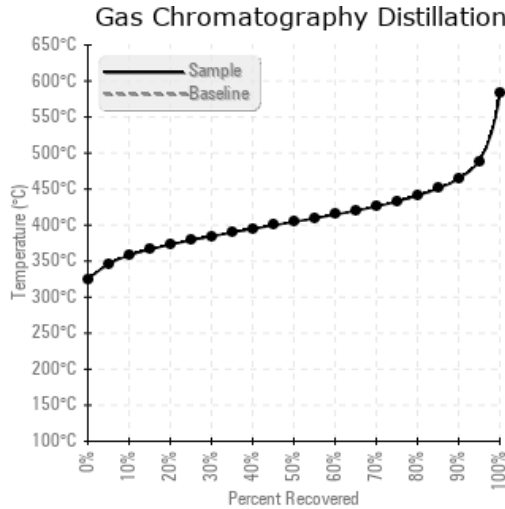
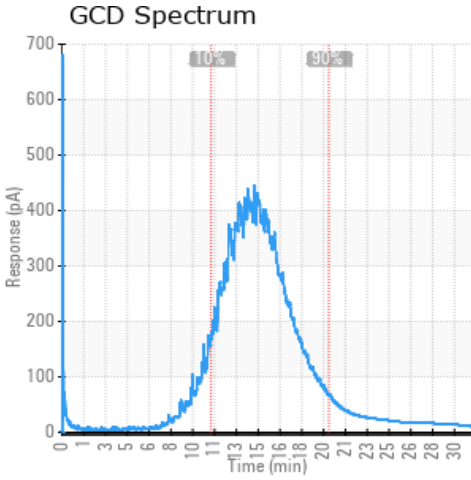
Sample Date	Received Date	Fluid Age	Sample Location	Flash Point (COC)	Water (KF)	Viscosity (40°C)	Acid Number	Solids	GCD 10%	GCD 50%	GCD 90%	GCD % < 335°C
	mm/dd/yy			°F/°C	ppm	cSt	mg/KOH/g	%wt	°F/°C	°F/°C	°F/°C	%
08/05/19	08/06/19	0y		421 / 216	153.6	46.2	1.20	2.04	676 / 358	760 / 405	868 / 464	1.66
Baseline Data												





Sample Date	Iron	Chromium	Nickel	Aluminum	Copper	Lead	Tin	Cadmium	Silver	Vanadium	Silicon	Sodium	Potassium	Titanium	Molybdenum	Antimony	Manganese	Lithium	Boron	Magnesium	Calcium	Barium	Phosphorus	Zinc
08/05/19	97	0	0	0	0	0	0	0	0	0	0	2	0	0	0	0	0	0	0	0	0	0	0	0
Baseline Data																								

Elemental analysis results (above) in parts per million (ppm). [10,000 ppm = 1.0%]



Historical Comments

Petro-Canada makes no representation or warranty of any kind, either express or implied, as to the accuracy or completeness of the analysis and assumes no responsibility and shall have no liability whatsoever with respect to such analysis, or a party's use of it. Petro-Canada is a division of HollyFrontier Corporation.