

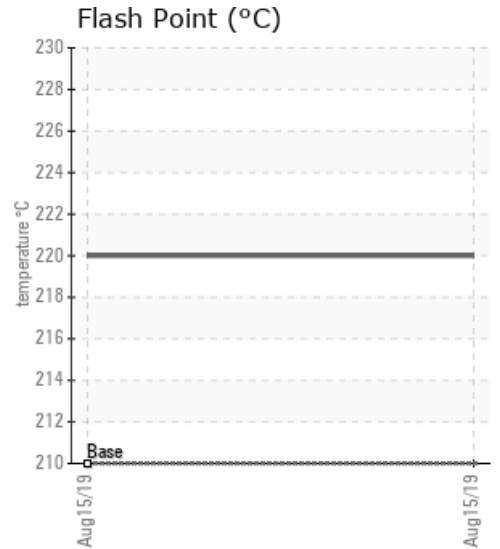
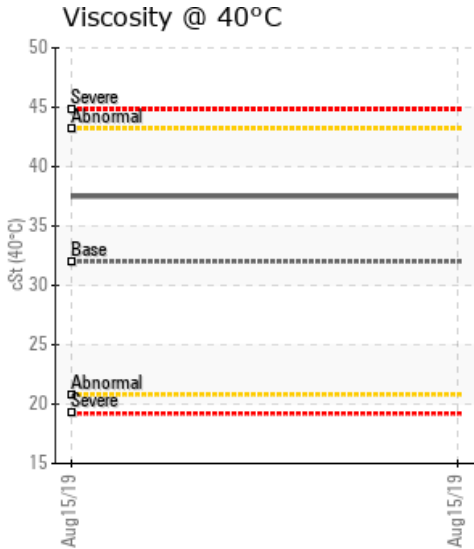
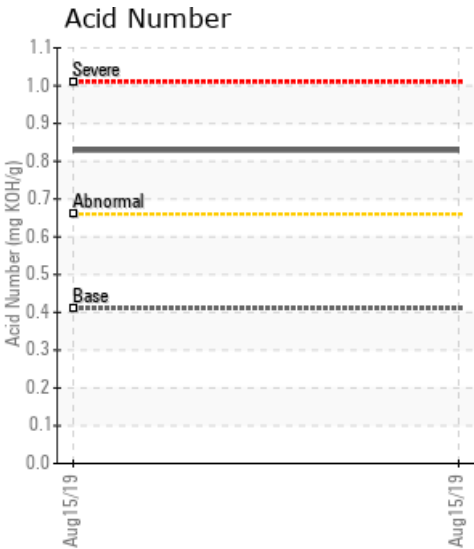
EAST

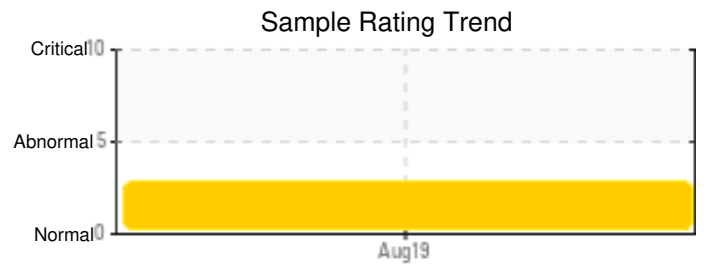
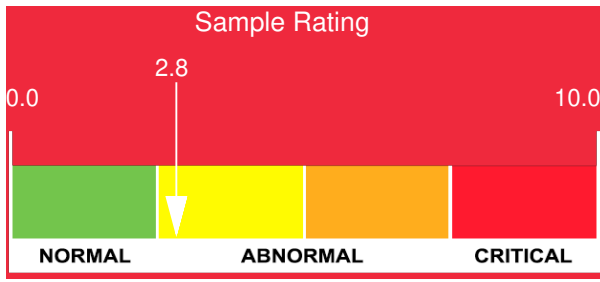
Customer: PTRHTF30138	System Information	Sample Information
McAsphalt Ind. 1221 Farewell Ave Oshawa, ON L1H 6N8 Canada Attn: M. Curry Tel: (905)436-2946 E-Mail: mcurry@mcasphalt.com	System Volume: 6000 ltr Bulk Operating Temp: 380F / 193C Heating Source: Blanket: Fluid: HEAT TRANSFER FLUID ISO 32 Make: HEATEC	Lab No: 02304943 Analyst: Behshad Sabah Sample Date: 08/15/19 Received Date: 08/27/19 Completed: 09/10/19

Recommendation: high TAN and Low increase in Pentane insoluble are the indication of low oil oxidation. please monitor the oil on annual bases.

Comments: Pentane Insolubles levels are abnormally high. Acid Number (AN) is abnormally high. (GCD) 90% Distillation Point is marginally low.

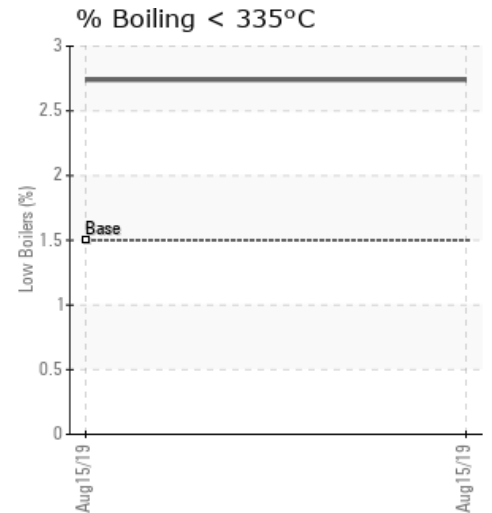
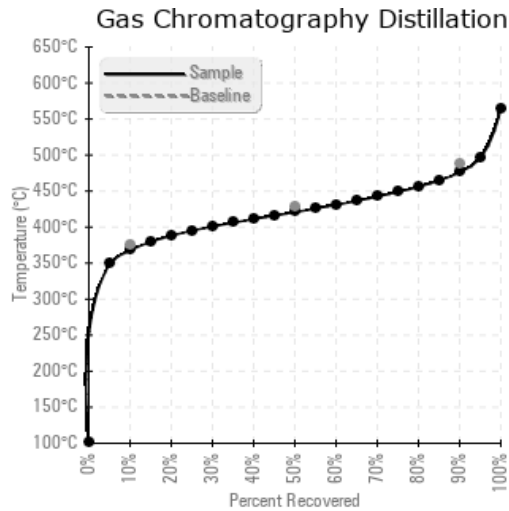
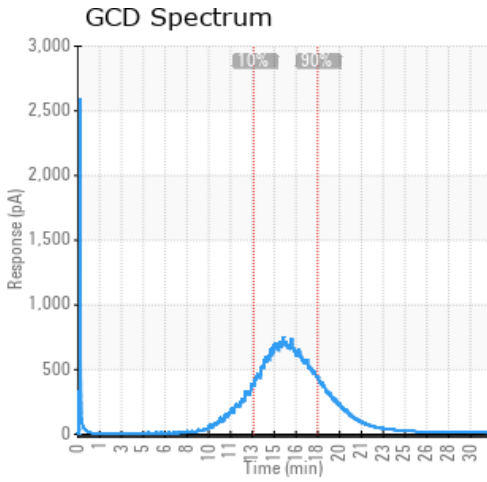
Sample Date	Received Date	Fluid Age	Sample Location	Flash Point (COC)	Water (KF)	Viscosity (40°C)	Acid Number	Solids	GCD 10%	GCD 50%	GCD 90%	GCD % < 335°C
	mm/dd/yy			°F/°C	ppm	cSt	mg/KOH/g	%wt	°F/°C	°F/°C	°F/°C	%
08/15/19	08/27/19	8y		428 / 220	33.3	37.5	0.829	0.479	694 / 368	789 / 421	889 / 476	2.74
Baseline Data				410 / 210		32	0.41		707 / 375	802 / 428	910 / 488	1.5





Sample Date	Iron	Chromium	Nickel	Aluminum	Copper	Lead	Tin	Cadmium	Silver	Vanadium	Silicon	Sodium	Potassium	Titanium	Molybdenum	Antimony	Manganese	Lithium	Boron	Magnesium	Calcium	Barium	Phosphorus	Zinc
08/15/19	6	0	0	0	0	0	0	0	0	0	0	0	0	0	0	0	0	0	0	0	0	0	0	0
Baseline Data				0	0					0			0	0					5				250	

Elemental analysis results (above) in parts per million (ppm). [10,000 ppm = 1.0%]



Historical Comments

Petro-Canada makes no representation or warranty of any kind, either express or implied, as to the accuracy or completeness of the analysis and assumes no responsibility and shall have no liability whatsoever with respect to such analysis, or a party's use of it. Petro-Canada is a division of HollyFrontier Corporation.